



# INFLATABLE COLD PLUNGE TUB USER GUIDE

## MODELS

**CP-IFTUB**

**CP-IFBAR**



# DON'T WAIT! REGISTER NOW!

Register your product within 90 days to ensure your sauna is recognized as an official purchase and is eligible for warranty coverage.

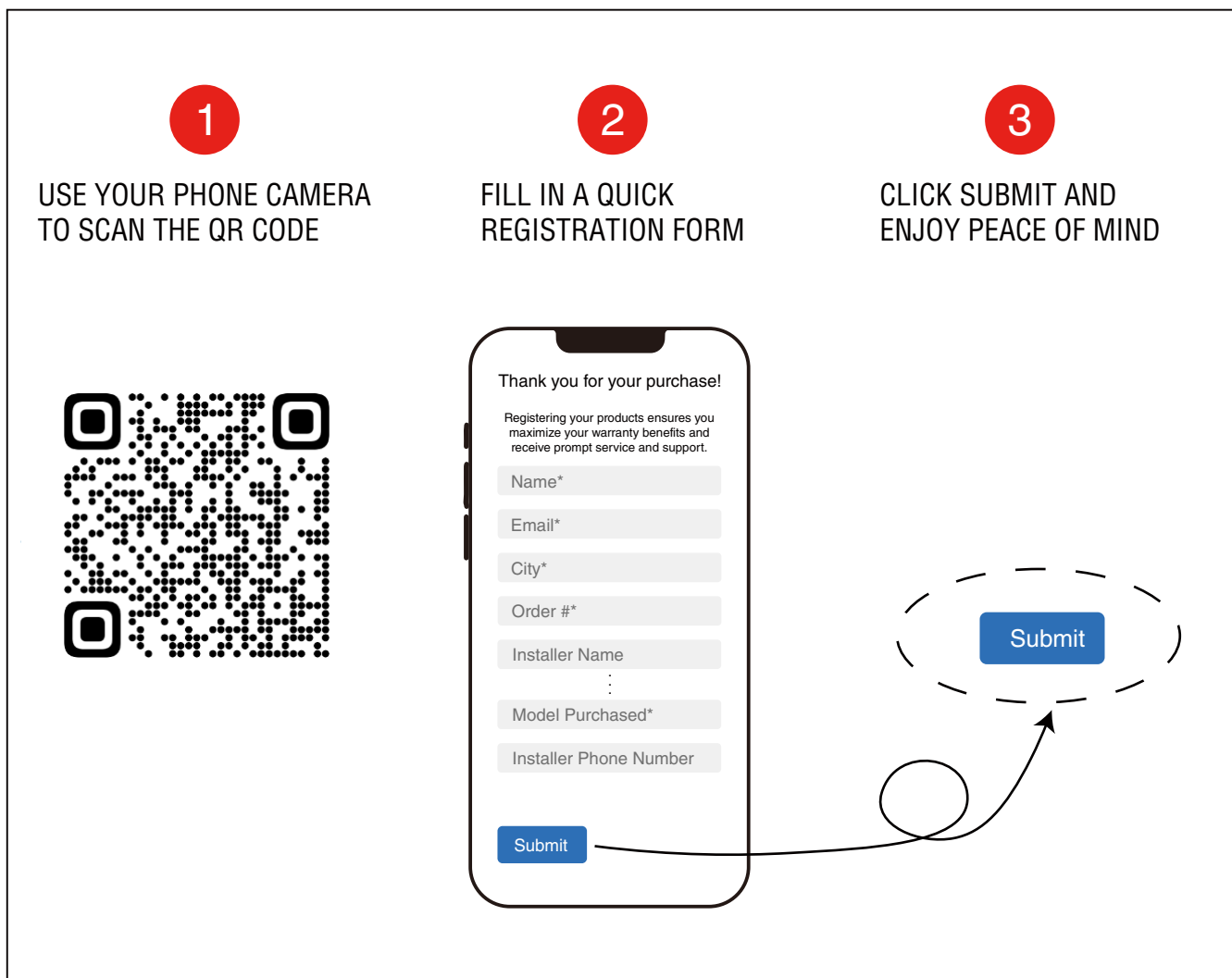
register online at [www.saunaspa.com/register](http://www.saunaspa.com/register) or scan the QR code at Page 2.

## PRODUCT REGISTRATION\*

**IMPORTANT:** Warranty will not be recognized unless product is registered.

**Register online at [www.saunaspa.com/register](http://www.saunaspa.com/register)** . or Scan the QR code below.

Registering online is fast, secure, and ensures we receive your information.



# WARRANTY AND REPAIR GUIDELINES

KPLUNGE warrants that this cold plunge tub be free from manufacturer defects and malfunctions.

**Please be advised failure to comply with any of the following will VOID the warranty.**

1. Tub must registered within 90 days of delivery.

## **Warranty Period:**

This product is covered under warranty for a period of 12 months for cold plunge, commencing from the date of purchase.

# USER INSTRUCTIONS

**It is recommended to carefully read the following instructions before use.**

- Do not overinflate. Inflate the tub to the recommended pressure (8–10 psi) to prevent damage or deformation.
- Always place the tub on a flat, stable surface, free from sharp objects or debris that could puncture it.
- Ensure the water temperature does not drop to dangerously low levels to prevent cold shock. Consult a physician before use if you have health concerns.
- Keep all electrical components, including the chiller unit and power cords (Not included), away from water to prevent electric shock.
- Always ensure the drain valve is securely closed before filling the tub and fully open when draining to avoid water leakage or pooling.
- The inflatable walls are not designed to support body weight. Sitting or standing on them may cause damage.
- After use, fully drain and dry the tub before deflating. Store it in a dry, shaded area away from direct sunlight, extreme temperatures, or sharp objects.
- Regularly check the inflation level, as temperature fluctuations may cause changes in air pressure. Reinflate if necessary.
- Enter and exit the tub carefully to prevent slips or sudden immersion that may cause cold shock. Use a non-slip mat if necessary.
- Keep sharp objects (such as jewelry, tools, or rough surfaces) away from the tub to prevent accidental punctures.
- Secure cover properly when not in use to keep debris out and maintain water cleanliness.

# USER INSTRUCTIONS

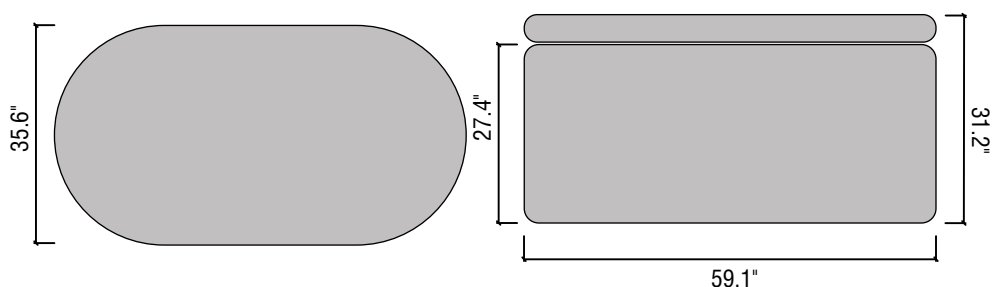
- Children may use the tub only under adult supervision.
- Individuals with skin conditions; broken, irritated or any open wounds, should not use this tub.
- Use with caution after consuming alcohol.
- Consult your doctor before use if you feel unwell, are taking medication, or are pregnant.
- Keep hair dryers, lamps, cell phones, tablets, radios, and other electrical devices at least 5 feet (150 cm) away from the chiller to prevent electrical hazards.
- Avoid overfilling the tub before getting in. Overfilled water can spill, creating slippery surfaces. Exercise caution when entering or exiting the tub to prevent falls.

# SPECIFICATIONS

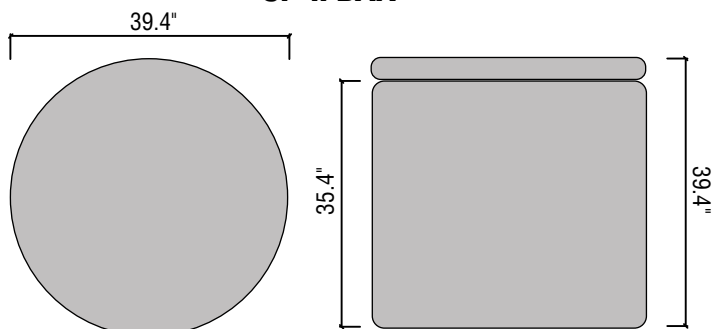
SPECS	CP-IFTUB	CP-IFBAR
Dimensions(L x W x H)	59.1"×35.6"×31.2" (1500×905×795 mm)	39.4"×39.4"×39.4"(1000×1000×1000mm)
Thickness	3.9" (100mm)	
Capacity	103gal (390L)	82gal (310L)
Material	PVC	

# PRODUCT SIZE CHART

**CP-IFTUB**

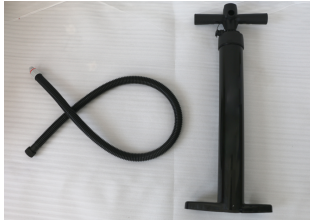


**CP-IFBAR**





# ACCESSORIES



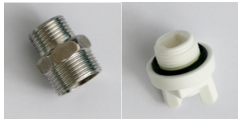
1. Manual Air pump and connection hose



2. Carry Bag



3. Repair Kit



4. Adapter (2 pieces) and Drain Plug (2 pieces)



5. Ground Mat



6. Thermometer

# USAGE

## Inflate the Tub

1. Align the hose with the pump connection hole, then tighten and assemble to the pump (Figure A).
2. Spread the tub flat, remove the inflation valve switch on the tub (Figure B), install the inflation hose to the inflation valve (Figure C).
3. Use the pump to inflate the tub (Figure E/Figure F). The recommended air pressure is 8–10 psi.



Figure A



Figure B



Figure C



Figure D



Figure E



Figure F

### Connect to Chiller

Chiller and water hoses are not included. When connecting tub to your existing chiller (Or when purchasing a KPLUNGE Chiller) it is important to make sure the hoses are installed properly.

Ensure the tub's outlet valve is connected directly to the chiller inlet valve.

Then, make sure the chiller outlet valve is connected directly to the tub's inlet valve. (Figure G)

Use the provided adapter if necessary.



Figure G

### Fill with water

Fill the bathtub with water until the water level is above the outlet of the tub.

## How to Care for Your Tub

1. Before using your ice bath tub for the first time, we recommend washing it with warm, soapy water, then rinsing and drying it with a soft, clean cloth.
2. Avoid using abrasive cleaners or high-pressure hoses, as they may damage the tub.
3. Before filling the tub, ensure the drain cap is securely closed to prevent water from leaking.
4. To drain the tub, use the convenient drain tap and hose to empty the water into a nearby sink or drain. Turn the tap carefully to the open position without forcing it. Once the tub is empty, close the tap to prepare it for the next use.
5. For longevity, we recommend draining, cleaning with warm soapy water (as mentioned above), and thoroughly drying your ice bath tub every two weeks.
6. Store the tub in its carry bag, away from sharp objects, extreme temperatures, and direct sunlight to maintain its condition.

## Usage of Repair Kit

If the surface of the tub is damaged, use a repair kit to fix it.

### WARNING!

- Work in a Well-Ventilated Area -- Repair adhesive contains strong chemicals that can produce harmful fumes. Use it in an open or well-ventilated space. (Repair adhesive glue is not included.)
- Wear Protective Gear -- Always wear gloves and safety goggles to prevent skin and eye irritation.
- Avoid Direct Contact -- Do not allow the adhesive to come into contact with your skin or eyes. If contact occurs, rinse immediately with plenty of water and seek medical attention if necessary.
- Keep Away from Heat and Flames -- Adhesive is highly flammable. Do not use it near open flames, sparks, or high-temperature areas.
- Store Properly -- Keep the adhesive tightly sealed in its original container and store it in a cool, dry place, away from direct sunlight and heat sources.

1. Open the repair kit.



2. Take a repair patch and cut it to the appropriate size.



3. Clean the damaged area and its surroundings, ensuring the surface is completely dry.



4. Apply glue to the damaged area and its surroundings, then attach the repair patch. (Glue is not included in the repair kit.)



5. Ensure the product is kept in a cool, dry place, and wait 24 hours before inflating it to check for any remaining leaks.



