

FIP PVC Ball Valves

Job Name	_____
Location	_____
Engineer	_____
Contractor	_____
Tag	_____ PO# _____

Specifications

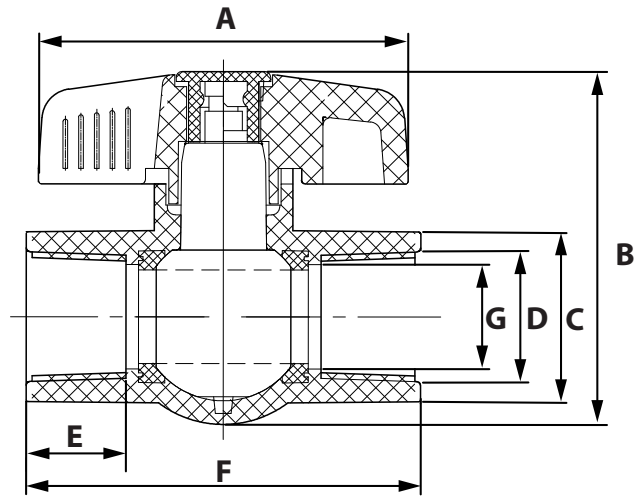
- One piece body construction
- Standard port
- EPDM seats and o-rings
- FPT x FPT end connections
- 145 psi max. pressure
- 113°F max. temperature
- Quarter turn operation
- Not for compressed air
- Ideal for swimming pools, irrigation and water supply uses
- Solvent ends comply with ASTM D 2466
- Threaded ends comply with ANSI B2.1
- For cold water lines
- Large flow opening

Applications

- Non-Potable Water

Materials

- Plastic



Dimensions and Product Offering

Part Code	Size	A	B	C	D	E	F	G
		(±0.20)	(±0.20)	(±0.02)	(FIP)	(MIN.)	(±0.20)	(±0.12)
B91050	1/2"	2.67"	2.45"	1.21"	1/2" - 14NPT	.78"	2.93"	.63"
B91075	3/4"	3.15"	3.06"	1.44"	3/4" - 14NPT	.79"	3.25"	.83"
B91100	1"	3.72"	3.56"	1.71"	1" - 11.5NPT	.99"	3.98"	1.05"
B91125	1-1/4"	4.22"	3.90"	2.02"	1-1/4" - 11.5NPT	1.01"	4.27"	1.29"
B91150	1-1/2"	4.22"	4.24"	2.33"	1-1/2" - 11.5NPT	1.02"	4.64"	1.45"
B91200	2"	5.37"	4.84"	2.81"	2" - 11.5NPT	1.06"	5.02"	1.87"
B91250	2-1/2"	9.89"	6.54"	3.66"	2-1/2" - 8NPT	1.46"	7.03"	2.38"
B91300	3"	10.49"	7.17"	4.22"	3" - 8NPT	1.81"	8.23"	2.88"
B91400	4"	11.73"	9.39"	5.30"	4" - 8NPT	2.79"	11.73"	3.74"