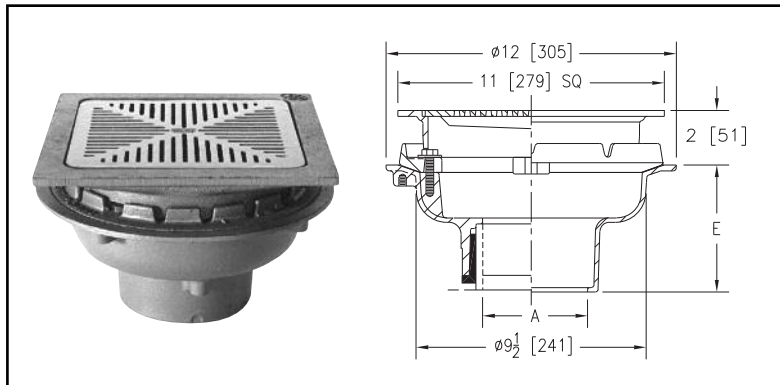
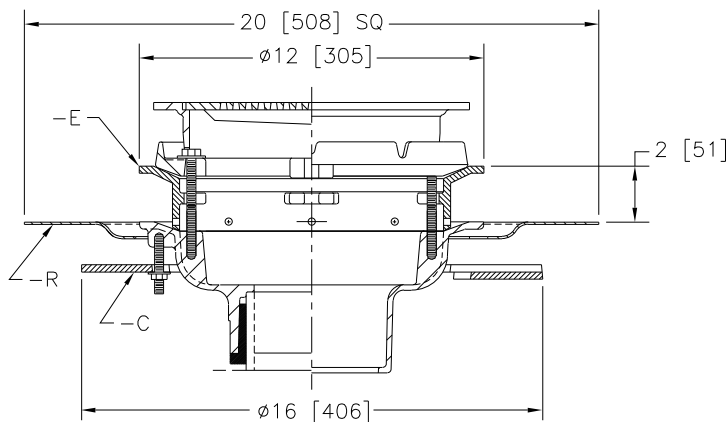


## Z154 11" [279 mm] PROM-DECK DRAIN with Heel-Proof Grate



A Pipe Size Inches [mm]	Approx. Wt. Lbs. [Kg]	Grate Open Area Sq. In. [cm <sup>2</sup> ]
2 - 3 - 4 - 5 - 6 [51-76-102-127-152]	29 [13]	20 [129]

**ENGINEERING SPECIFICATION:** ZURN Z154 11" [279 mm] Square Top Prom-Deck Drain, Dura-Coated cast iron body with square promenade frame and heel-proof grate with combination membrane flashing clamp/gravel guard.



**Z154-C-E-R Illustrated**

**ZURN Z154-C-E-R** 11" [279 mm] Square Top Prom-Deck Drain, as specified above, with Dura-Coated cast iron extension (-E), Dura-Coated steel roof sump receiver (-R), and Dura-Coated cast iron underdeck clamp (-C).

### OPTIONS

**OUTLETS** (Specify pipe size in inches and type of outlet.)

OUTLET TYPE	OUTLET DESIGNATION Pipe Size/Outlet Type	'E' BODY HT. DIM. In./[mm]
Inside Caulk	21C, 31C, 41C, 51C, 61C	5-1/4" [133 mm]
Threaded	21P, 31P, 41P, 51P, 61P	3-3/4" [95 mm]
No-Hub	2NH, 3NH, 4NH, 5NH, 6NH	5-1/4" [133 mm]
Neo-Loc	2NL, 3NL, 4NL	4-5/8" [118 mm]

### PREFIXES

<b>Z</b>	D.C.C.I. Body with Top*
<b>ZB</b>	D.C.C.I. Body with Polished Bronze Top
<b>ZN</b>	D.C.C.I. Body with Polished Nickel Bronze Top

### SUFFIXES

- AR Acid Resistant Epoxy Coated Finish
- C Underdeck Clamp
- DG Duresist Grate (Z Only)
- DP Top-Set® Roof Deck Plate (Replaces both the -C and -R)
- E 2" [51 mm] High Static Extension (Specify Height)
- ES Static Extension with Secondary Clamp Collar at Body (For clamping at roof drain body.)
- G Galvanized Cast Iron
- R Roof Sump Receiver
- S Secondary Strainer
- SC Secondary Clamp Collar
- TC Neo-Loc Test Cap Gasket (2" [51 mm] to 4" [102 mm] NL Bottom Outlet Only)
- TS Top Secured with Slotted Screws
- VP Vandal-Proof Secured Top
- XJ Vertical Expansion Joint (See Z190)
- Y Sediment Bucket
- 85 Stainless Steel Perforated Extension
- 90 90° Threaded Side Outlet Body (2" [51 mm] thru 4" [102 mm])

\*Regularly furnished unless otherwise specified.