



APP USER GUIDE



24/7 HELP For 24/7 customer support, visit feit.com/help

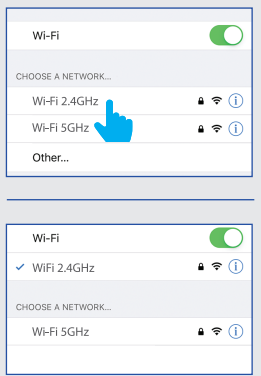
System Requirements
Minimum: iOS 11.0, Android™ 6.0 Marshmallow or higher
- Dedicated 2.4GHz Wi-Fi Network -

Your screen images may differ from this user guide.

BEFORE USING THIS USER GUIDE, PLEASE READ THE INCLUDED INSTALLATION GUIDE FOR PROPER PRODUCT INSTALLATION.

NOTE: Only works with 2.4GHz Wi-Fi networks.

Go to your Wi-Fi settings and connect your phone to your 2.4GHz Wi-Fi network.



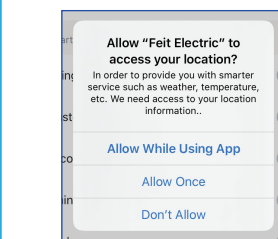
Set Up Device

- 1 Download the **Feit Electric** app.
- 2 Launch the **Feit Electric** app. Enter an email address to register, then tap **Continue**. A verification code will be sent to your email.
- 3 Create a password then tap **Done**.

Permissions & Location Access

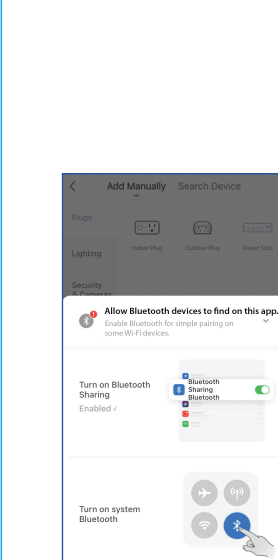
Allow notifications (highly recommended).

Allow the **Feit Electric** app to access your location to help connect your Starlight Spheres.



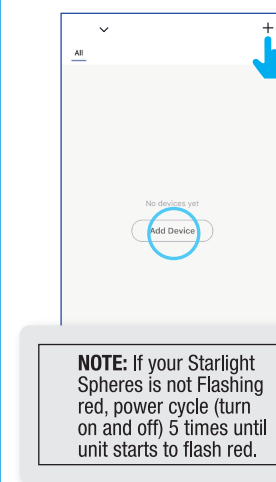
Enable Bluetooth

on your smart device to facilitate simple pairing.



Simple Pairing Mode

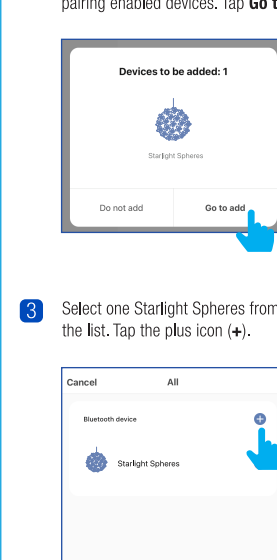
1 Make sure the Starlight Spheres is blinking, then tap **Add Device** or the plus icon (+) on the upper right corner.



NOTE: If your Starlight Spheres is not Flashing red, power cycle (turn on and off) 5 times until unit starts to flash red.

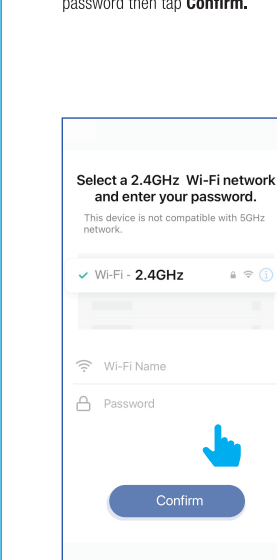
Simple Pairing Mode

2 The Starlight Spheres name(s) will appear in a small window for simple pairing enabled devices. Tap **Go to add**.



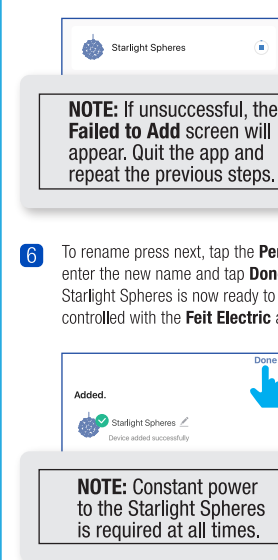
Simple Pairing Mode

4 After confirming that you are on a 2.4GHz Wi-Fi network, enter your password then tap **Confirm**.



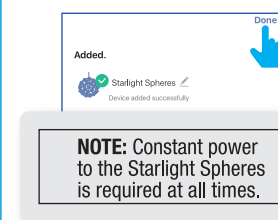
Simple Pairing Mode

5 The status window will appear and show progress toward set-up.



NOTE: If unsuccessful, the **Failed to Add** screen will appear. Quit the app and repeat the previous steps.

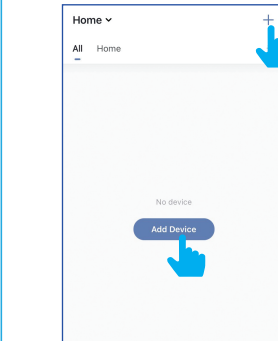
6 To rename press next, tap the **Pen** icon, enter the new name and tap **Done**. The Starlight Spheres is now ready to be controlled with the **Feit Electric** app.



NOTE: Constant power to the Starlight Spheres is required at all times.

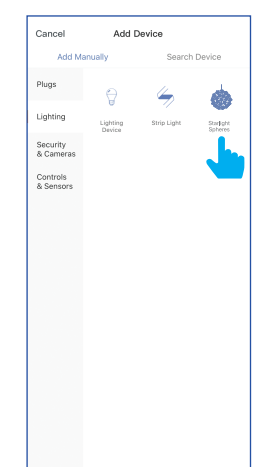
Alternative Set-up Method EZ Mode

1 Tap the plus icon (+) in the upper right corner.

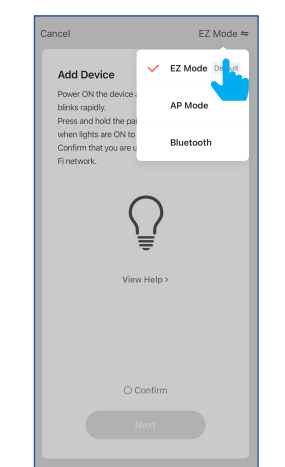


NOTE: Use **EZ Mode** to set up multiple smart products at the same time or if there are issues with simple pairing.

2 Tap **Lighting**, then select **Starlight Spheres**.



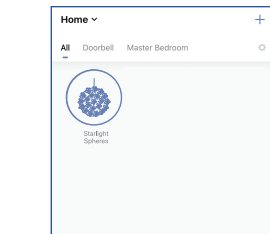
3 Tap the upper right corner and make sure you have **EZ Mode** selected. Follow steps 4-6 from **Simple Pairing Mode** to complete setup.



Features

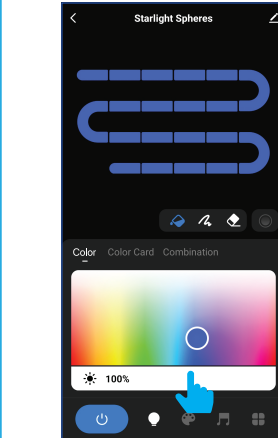
1 **Individual Starlight Spheres On/Off**
Tap the Starlight Spheres icon to turn the Strip Light On/Off.

2 **Individual Starlight Spheres Operation**
Press and hold the Starlight Spheres icon for two seconds to enter operation.



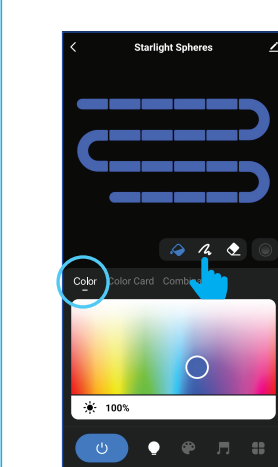
Dimming

3 Tap and hold the **Dimming** bar at the bottom of the screen. Slide the dimming bar left or right to set the brightness level. Tabs above the dimmer bar allow you to choose desired colors or color combinations.



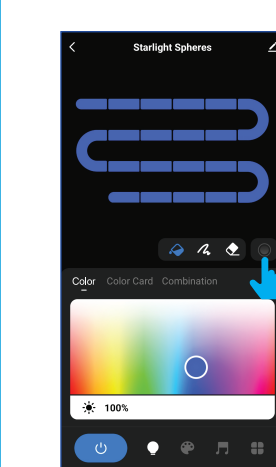
Custom Color Changing

4 Tap the **Squiggly line** icon as shown below on your screen. Tap your desired color. Then tap the line sections to fill in with your desired color.



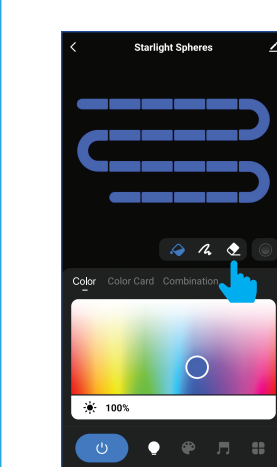
Custom Color Changing

A Tap the **Button** icon to create a seamless color blend.



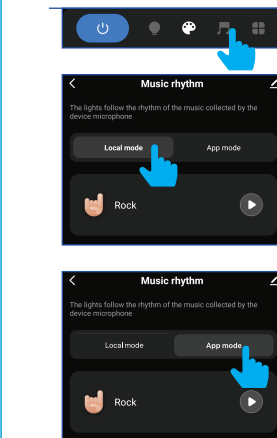
Custom Color Changing

B Tap the **Eraser** icon as shown below on your screen. Tap the Starlight Spheres sections that you would like to change. The color will disappear from those sections after you tap them.



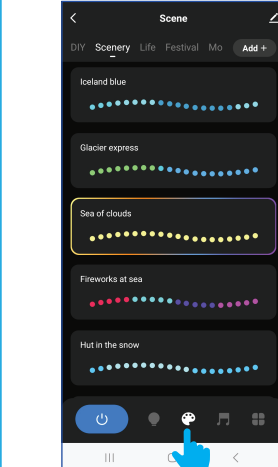
Music

5 Tap the **Music** icon to sync your light with the rhythm of music. Tap **Local Mode** to sync your light to your music without remaining on the app. Tap **App Mode** to sync your light to music only when the app is open.



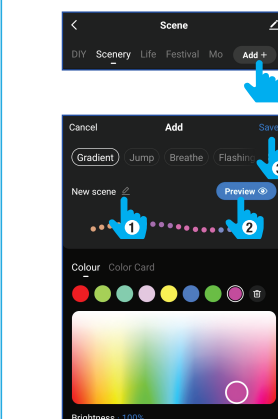
Scene

6 Tap the **Color** icon in the bottom of the screen. Tap the desired Scene from the middle of your screen.

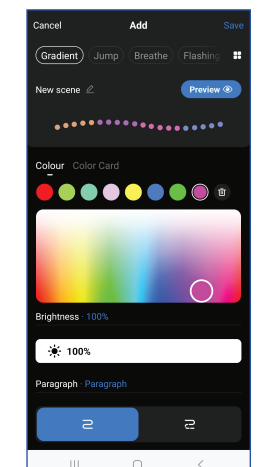


Modify

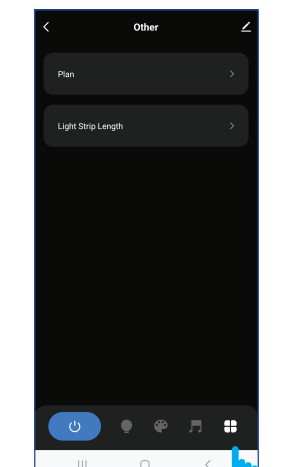
7 Tap the **Add +** button from the top right. Choose a Scene style option from the top of your screen. Tap **New Scene** (1) to name your scene, then tap **Preview** (2) to view the effect on your Starlight Spheres. Tap **Save** (3) to lock in desired effect.



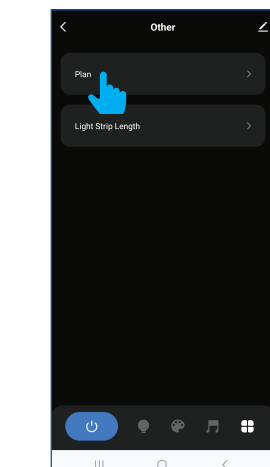
A There are up to 16 **scene** styles to choose from.



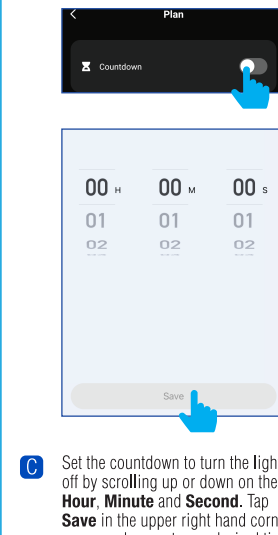
8 Tap the **Other** icon in the bottom right of your screen.



A Tap **Plan**.

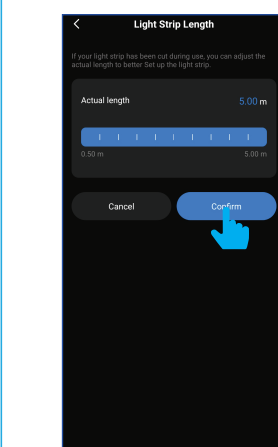


B Tap the **Countdown** toggle button.



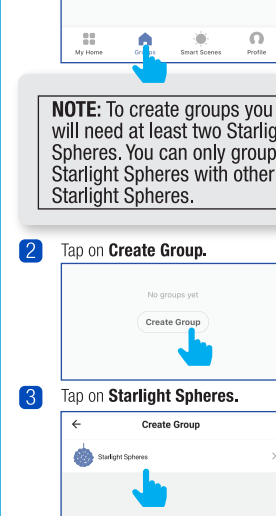
Starlight Spheres Length

9 Starlight Spheres length can be adjusted from 5m to 0.5m using the animated drag slider. When length is adjusted it shuts down sections of LEDs on each ball.



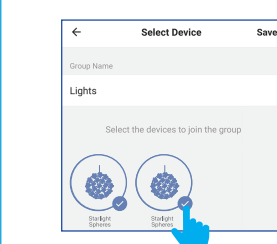
Groups

1 Tap the **Groups** icon at the bottom of the app home screen.

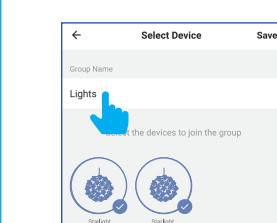


NOTE: To create groups you will need at least two Starlight Spheres. You can only group a Starlight Spheres with other Starlight Spheres.

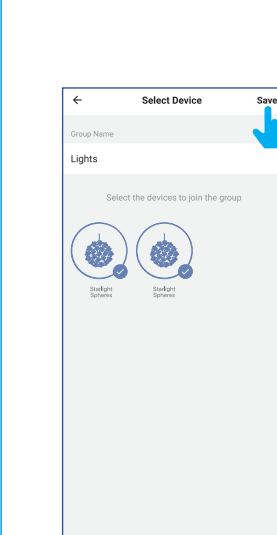
4 Select the Starlight Spheres that you want to group.



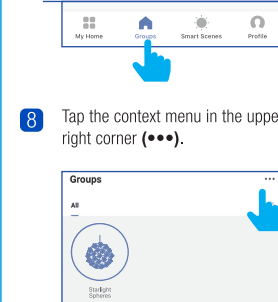
5 Tap the group name and enter the name of the group.



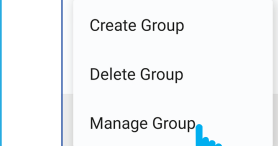
6 Once the group is named and the Starlight Spheres are selected, tap **Save** in the upper right corner.



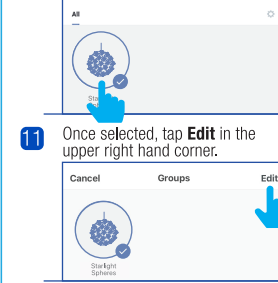
7 **Manage Groups**
Tap the **Groups** icon.



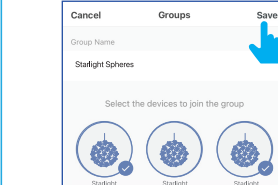
8 Tap the context menu in the upper right corner (⋮).



10 Select the group to edit.



11 Once selected, tap **Edit** in the upper right hand corner.



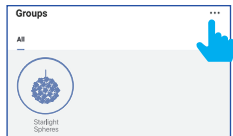
12 Rename the group or remove a Starlight Spheres from the group. Once complete, tap **Save** in the upper right corner.

13 Delete Groups

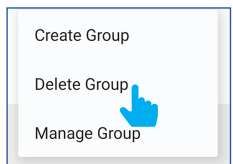
Tap the **Groups** icon.



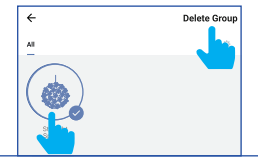
14 Tap the context menu in the upper right corner (•••).



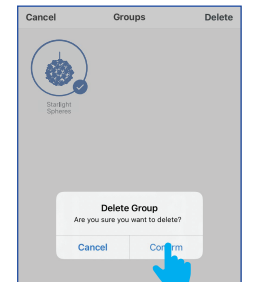
15 Tap **Delete Group**.



16 Select the group to delete. Once selected, tap **Delete Group** in the upper right corner.

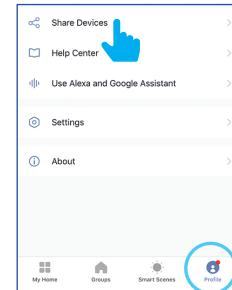


17 Tap **Confirm**.



Share Control of a Device (Two Methods)

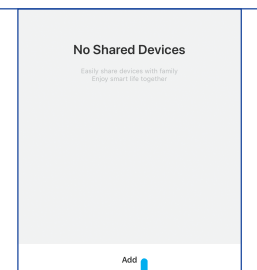
1 **Method 1:** Tap the **Profile** icon, then tap **Share Devices**.



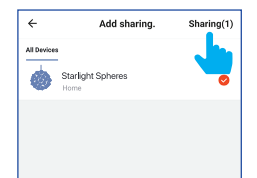
A **Method 2:** From the Starlight Spheres' settings menu, tap the **Pen** icon located in the upper right corner. Then tap **Share Devices**.



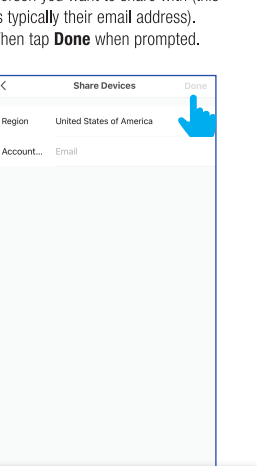
2 Tap **Add** at the bottom of the screen.



3 Select the device that you wish to share. Tap **Sharing** in the upper right corner.



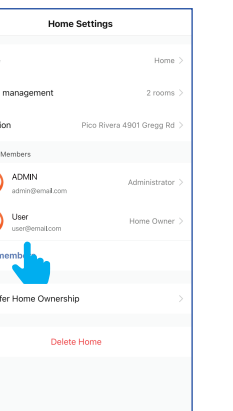
4 Enter the account name of the person you want to share with (this is typically their email address). Then tap **Done** when prompted.



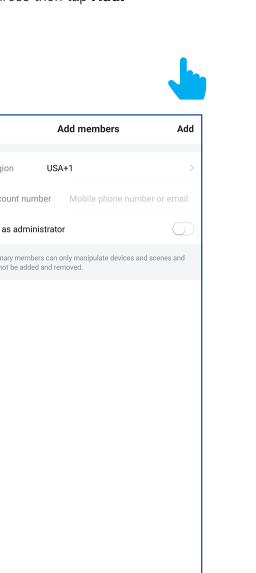
NOTE: New members must set up an account before sharing is possible.

Share Control of All Devices Within a Location

1 From the home screen, tap **Profile**, then **Location Management**, then the location you would like to share. Tap **Add members**.



2 Enter the new member's email address then tap **Add**.



Room Management

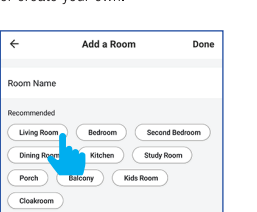
1 Tap the three dots from the home menu, then tap **Room Management**.



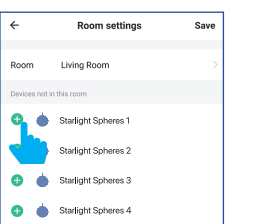
2 Tap **Add a Room**.



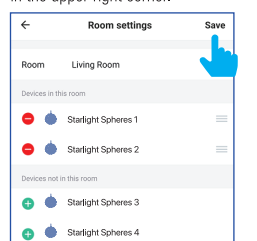
3 Tap on a preset room name or create your own.



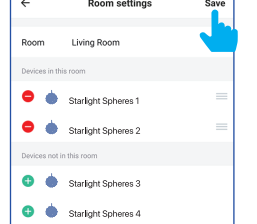
4 Add individual lamps by tapping on the icon (+) next to each Starlight Spheres' name.



5 When finished, tap **Save** in the upper right corner.

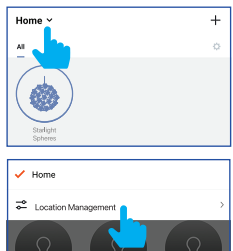


6 Remove individual Starlight Spheres by tapping on the icon (-) next to each Starlight Spheres' name.

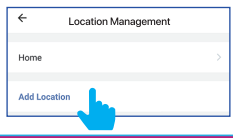


Home Management

1 Tap **Home** from the main menu, then tap **Location Management**.

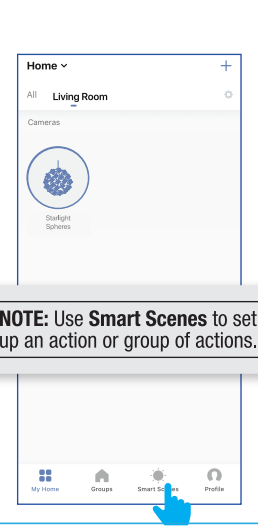


2 Tap **Add Location** to indicate where the bulbs are located.



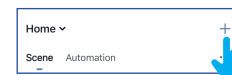
Smart Scenes

1 From the **My Home** page, tap **Smart Scenes** at the bottom of screen.

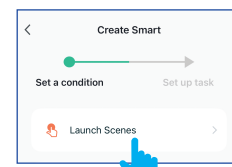


NOTE: Use **Smart Scenes** to set up an action or group of actions.

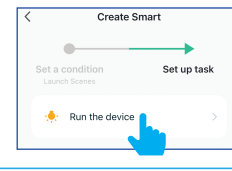
2 In the **Smart Scenes** tab, tap the plus icon (+).



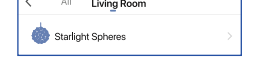
3 Tap on **Launch Scenes**.



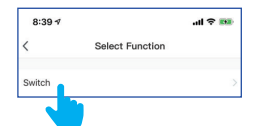
4 Tap on **Run the device**.



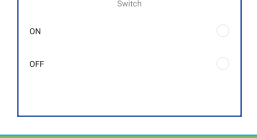
5 Select your device to initiate an action.



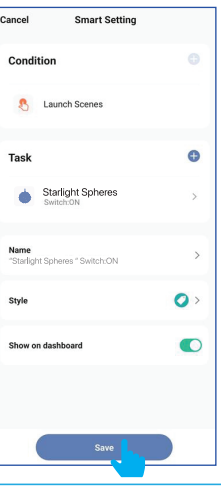
6 On the **Select Function** screen, tap on the action you want the device to perform.



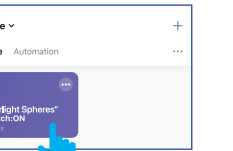
A On the Switch screen, tap **On** or **Off**.



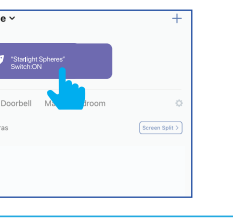
7 Review your scene, edit them if necessary, then **Save**.



8 Your action(s) will appear under **Scene** tab.

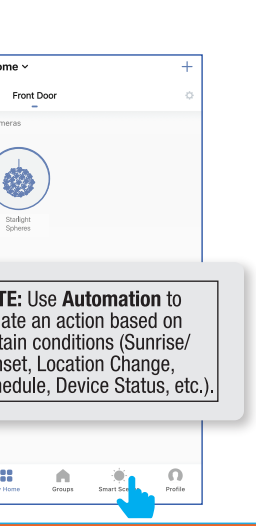


A It will also appear on the top of your **My Home** screen. Tap to execute your action(s).



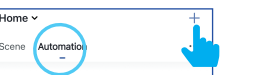
Automation

1 From the **My Home** page, tap **Smart Scenes** at the bottom of screen.

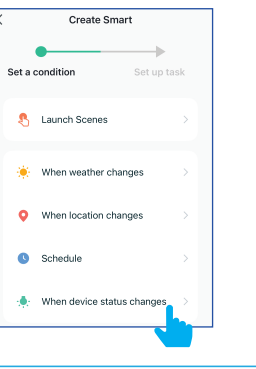


NOTE: Use **Automation** to initiate an action based on certain conditions (Sunrise/Sunset, Location Change, Schedule, Device Status, etc.).

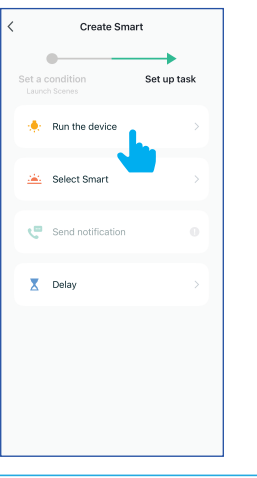
2 Tap **Automation** at the top of the screen, and then tap on plus icon (+).



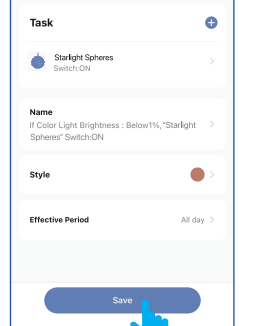
3 Set a **condition** you would like to trigger.



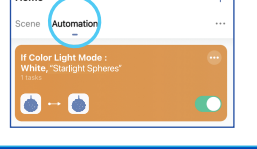
4 Set up a **task** you would like to automate.



5 Review your automations, edit them if necessary, then **Save**.

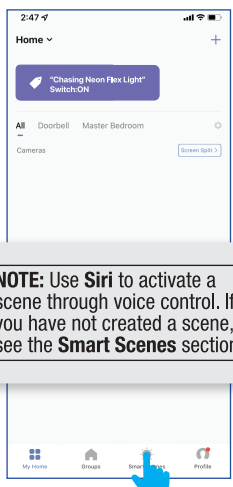


6 Your automation will appear under the **Automation** tab.



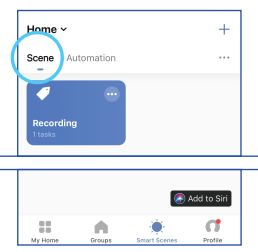
Enable Siri Shortcuts® (for use with iPhone)

1 From the **My Home** page, tap **Smart Scenes** at the bottom of screen.

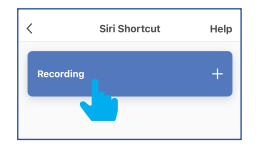


NOTE: Use **Siri** to activate a scene through voice control. If you have not created a scene, see the **Smart Scenes** section.

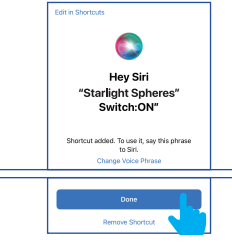
2 In the **Scene** tab, tap **Add to Siri** located at the bottom of the screen.



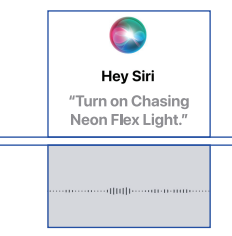
3 In the **Siri Shortcut** screen, tap on the action you would like to add to **Siri**.



4 On the **"Hey Siri"** screen, tap on the device name to edit it. Tap **Done** at the bottom of the screen.

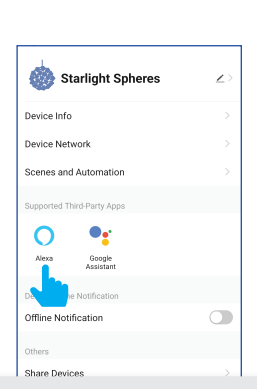


5 Now you can use the **"Hey Siri"** command to control this action from your **iOS** device. **"Hey Siri, turn on Starlight Spheres."**



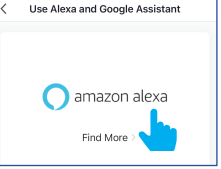
CONNECT TO ALEXA

1 Tap on **Profile** at bottom right. Tap on **Use Alexa and Google Assistant**.

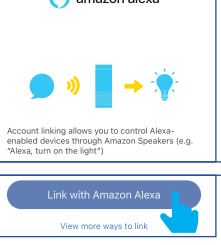


NOTE: Sign in to Amazon Alexa. If you do not have an account with Amazon, please create one.

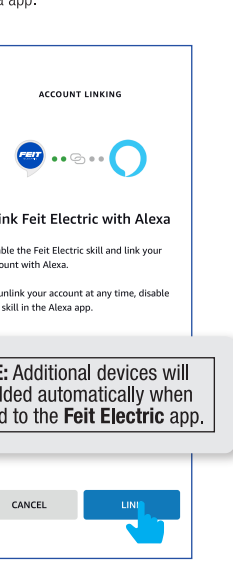
2 Tap on **Amazon Alexa**.



3 Tap on **Link with Amazon Alexa**.



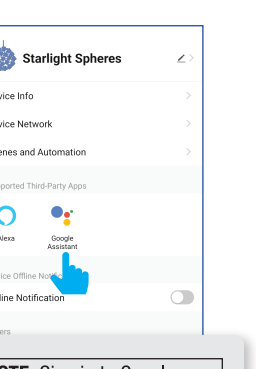
4 Tap on **Link**. You will be linked automatically to your Amazon Alexa app.



NOTE: Additional devices will be added automatically when added to the **Feit Electric** app.

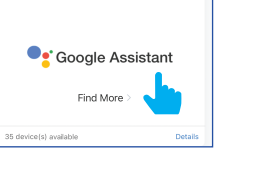
CONNECT TO GOOGLE ASSISTANT

1 Tap on **Profile** bottom right. Tap on **Use Alexa and Google Assistant**.

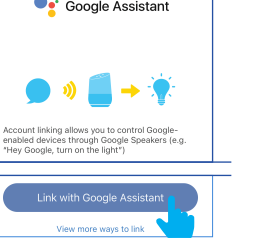


NOTE: Sign in to Google Assistant. If you do not have an account with Google, please create one.

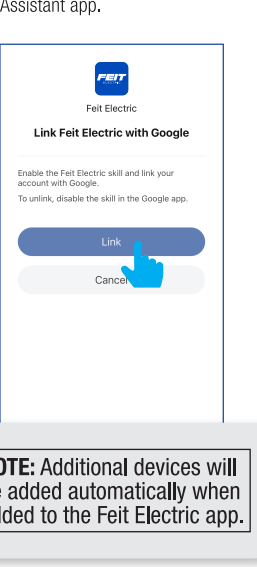
2 Tap on **Google Assistant**.



3 Tap on **Link with Google Assistant**.



4 Tap on **Link**. You will be linked automatically to your Google Assistant app.



NOTE: Additional devices will be added automatically when added to the **Feit Electric** app.

Need Help?

Please refer to our online resources at www.feit.com/help to learn about more features & latest updates