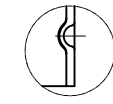
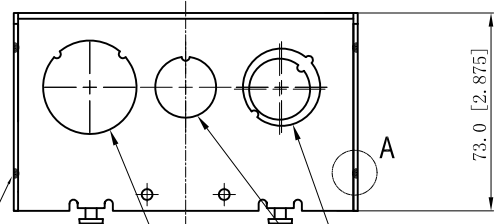


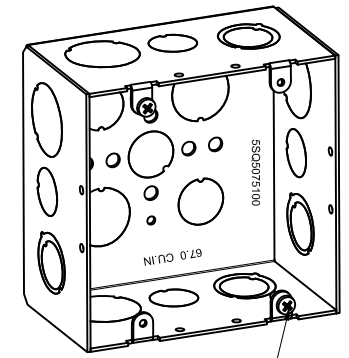
SIDES	BOTTOM
4 1/2" KNOCKOUTS	3 1/2" KNOCKOUTS
4 1/2"-3/4" KNOCKOUTS	2 3/4" KNOCKOUTS
4 1" KNOCKOUTS	
2 PCS 8-32×1/2 Screws Installed	
Material: Steel-0.0625"-G60 Galvanized	



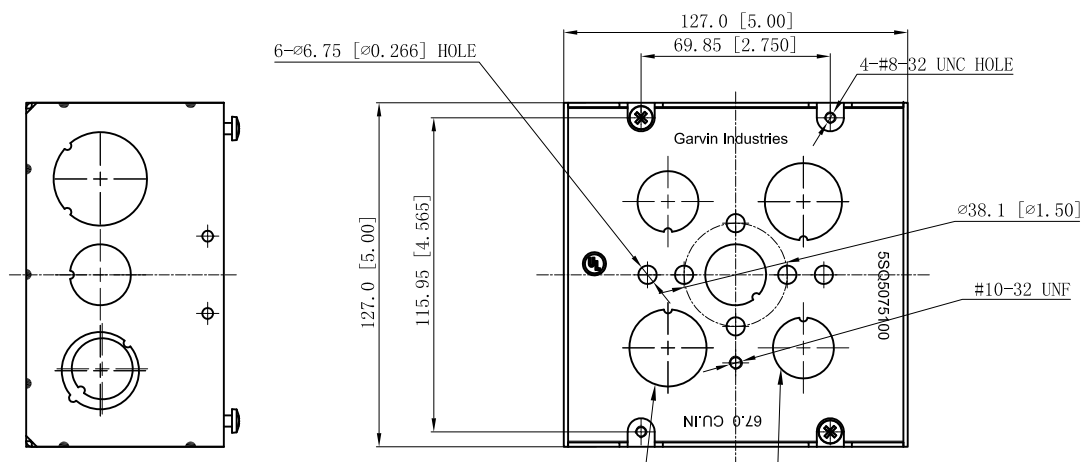
WELDING STYLE DETAIL VIEW A

14 PLACES SPOT WELDING

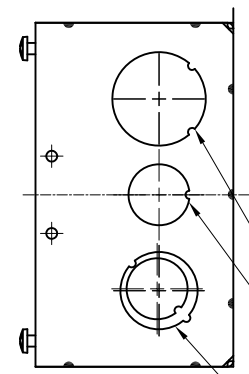
2 1/2"-3/4" MOON KNOCKOUTS $\phi=22.50$ [$\phi=0.886$]
 $\phi=28.50$ [$\phi=1.122$]
 2 1/2" KNOCKOUTS $\phi=22.5$ [$\phi=0.886$]
 2 1" KNOCKOUTS $\phi=34.5$ [$\phi=1.378$]



#8-32, × 2



2 3/4" KNOCKOUTS $\phi=28.50$ [$\phi=1.122$]
 3 1/2" KNOCKOUTS $\phi=22.5$ [$\phi=0.886$]



2 1" KNOCKOUTS $\phi=34.5$ [$\phi=1.378$]
 2 1/2" KNOCKOUTS $\phi=22.5$ [$\phi=0.886$]
 2 1/2"-3/4" MOON KNOCKOUTS $\phi=22.50$ [$\phi=0.886$]
 $\phi=28.50$ [$\phi=1.122$]

This data sheet is for reference only. GARVIN INDUSTRIES reserves the right to make changes to the design without prior notice.

DESCRIPTION
TRADE REFERENCE TERMS

STANDARD PACKING	GARVIN INDUSTRIES		
	5 in. Square × 2.875" Deep Metal Box		
TITLE	SIZE	DWG. NO.	REV
	A4	5SQ5075100	A
DATA SHEET			
www.garvinindustries.com			