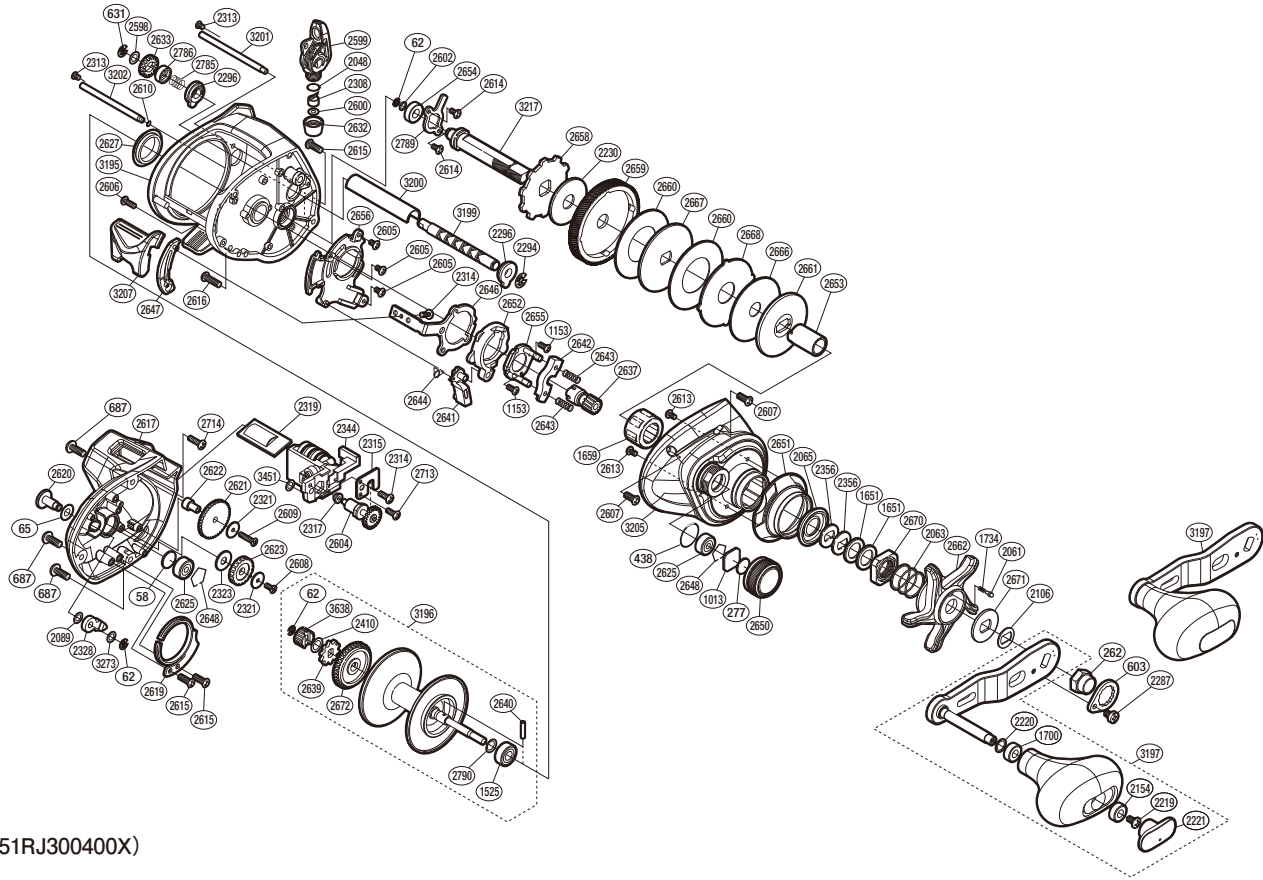


SHIMANO

TEKOTA

TEKA400HGLC



(51RJ300400X)

#	Part No.	Description	#	Part No.	Description	#	Part No.	Description
58	10GEU	Spacer B	2328	10T84	Click Pawl	2648	1054D	Bearing Retainer
62	105NK	E Lock	2344	10117	Counter Unit Assembly	2650	10234	Cast Control Cap
65	104H2	Spacer A	2356	109F5	Drag Spring Washer	2651	10253	Clutch Button Attachment
262	10FT1	Handle Nut	2410	10S0Q	Washer	2652	10254	Clutch Cam
277	10896	Cast Control Spacer	2598	10S42	Washer	2653	10250	Roller Clutch Inner Tube
438	108WK	O Ring	2599	100UY	Line Guide Assembly	2654	10BQ7	Drive Shaft Bushing
603	10LMC	Handle Nut Plate	2600	1003S	Washer	2655	10QVM	Clutch Cam Retainer
631	105NC	E Lock	2602	1003V	Washer	2656	10251	Clutch Guard
687	103GP	Screw	2604	100V0	Counter Gear Assembly	2658	10D73	Anti-Reverse Ratchet
1013	1085F	Spool Tension Spacer	2605	10SUT	Screw	2659	101H4	Drive Gear
1153	10LVJ	Screw	2606	10MT9	Screw	2660	1025D	Drag Washer
1525	105CA	Ball Bearing	2607	101GR	Screw	2661	1025E	Key Washer
1651	10J1N	Star Drag Spacer	2608	100UL	Screw	2662	10232	Star Drag
1659	10F37	Roller Clutch Bearing	2609	10SUS	Screw	2666	1024D	Drag Washer
1700	104UJ	Handle Knob Bushing	2610	108WW	O Ring	2667	1024E	Key Washer
1734	10BT2	Click Spring	2613	10LA3	Screw	2668	1024F	Eared Washer
2048	108WQ	O Ring	2614	10LCT	Screw	2670	1024H	Star Drag Nut
2061	10MFC	Click Pin	2615	10LFN	Screw	2671	10J22	Click Plate Retainer
2063	10A70	Star Drag Spring	2616	10LHY	Screw	2672	10233	Counter Gear A
2065	10C69	Roller Clutch Water Proof	2617	10T79	Left Side Plate	2713	10TBS	Screw
2089	10GHP	Washer	2619	10237	Click Spring	2714	10LF5	Screw
2106	107QN	Drive Shaft Shield	2620	101H9	Click Button	2785	10SXP	Worm Shaft Spring
2154	10EU0	Handle Knob Bushing	2621	10238	Idle Gear B	2786	10RVK	Worm Shaft Cam
2219	10LFA	Screw	2622	10231	Idle Gear B Support	2789	10RVE	Drive Shaft Retainer
2220	10HEP	Washer	2623	101TN	Idle Gear D	2790	10SYU	Spring
2221	101B8	Handle Knob Seal	2625	105C2	Ball Bearing	3195	1001B	Frame Assembly
2230	1025A	Drag Washer	2627	1024L	Frame Center Seal	3196	10S1P	Spool Assembly
2287	10LLU	Screw	2632	101HC	Pawl Cap	3197	10019	Handle Assembly
2294	10KHG	E Lock	2633	101TJ	Idle Gear C	3199	10SDR	Worm Shaft
2296	100GP	Worm Bushing A	2637	10235	Pinion Gear	3200	10SPH	Level Wind Guard
2308	10BHQ	Line Guide Pawl	2639	101HA	Click Gear	3201	10SDK	Stabilizer Bar A
2313	10MPD	Screw	2640	10MD1	Spool Clutch Pin	3202	10SDL	Stabilizer Bar B
2314	10LCL	Screw	2641	101J2	Clutch Pawl	3205	10SPD	Right Side Plate
2315	100H8	Counter Frame Plate	2642	1046X	Yoke	3207	10RUN	Clutch Button
2317	10CYA	Bushing	2643	104BC	Yoke Spring	3217	100J6	Drive Shaft
2319	10S8X	Counter Lens Assembly	2644	101J3	Clutch Pawl Spring	3273	100K0	Washer
2321	10DT6	Idle Gear B Spacer B	2646	101J9	Clutch Plate	3451	10RKQ	Washer
2323	101JK	Idle Gear B Spacer A	2647	101TK	Clutch Bar Guide B	3638	10TCP	Idle Gear A

Please note that the number of adjusting washers may not be the same as shown in the exploded views.
(Adjustment will vary with each individual product.)

(230908)_007