

Hold-Up & Panic Devices

Hold-Up Switches

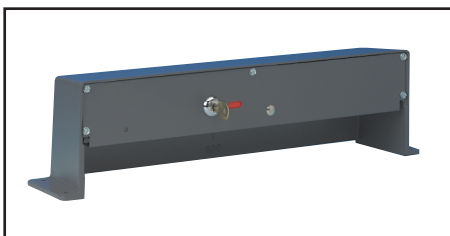
264 Money Clip

- Designed for installation in cash registers, cash boxes and at tellers' windows
- When activated, sends an immediate signal to either the police or central office
- Single pole double-throw contacts
- Recessed screws provided for easy mounting
- Dimensions:
158mm L x 57mm W x 19mm D



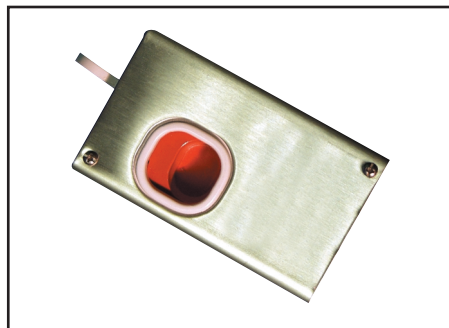
266 Foot Rail

- Reliable easy to operate foot activated hold-up device
- Housing made from rugged cast aluminium
- Designed to minimize the possibility of false alarms while permitting unobtrusive operation
- Indicator flag locks when alarm is tripped
- Dimensions:
460mm L x 90mm W x 120mm H



269R Hold-Up Switch

- Double-pole double-throw contacts for multi-notifications
- Switch design provides totally silent operation
- Twin 45° screw terminals with EOL resistor splicing terminal
- Adhesive pads for temporary positioning prior to screw mounting
- Operating temp: 14°F to 140°F
- Listed for UL636 Hold-Up alarm units and systems
- Dimensions:
89mm L x 51mm W x 32mm D



270R Hardwired Hold-Up Switch In Plastic Case

- Switch Type: Plunger type DPDT
- Switch action: Selectable latching or momentary
- Switch rating: 0.2A @ 30VDC max.
- Connections: four position 45° screw terminal block for each output side with EOL resistor splicing terminals
- Listed for UL636 Hold-Up alarm units and system
- Dimensions:
89mm L x 51mm W x 38mm D



268 Hold-Up Switch

- No chance of accidental tripping
- Smooth operation without danger of being detected
- Supplied with SPDT contacts for open or closed circuit systems

