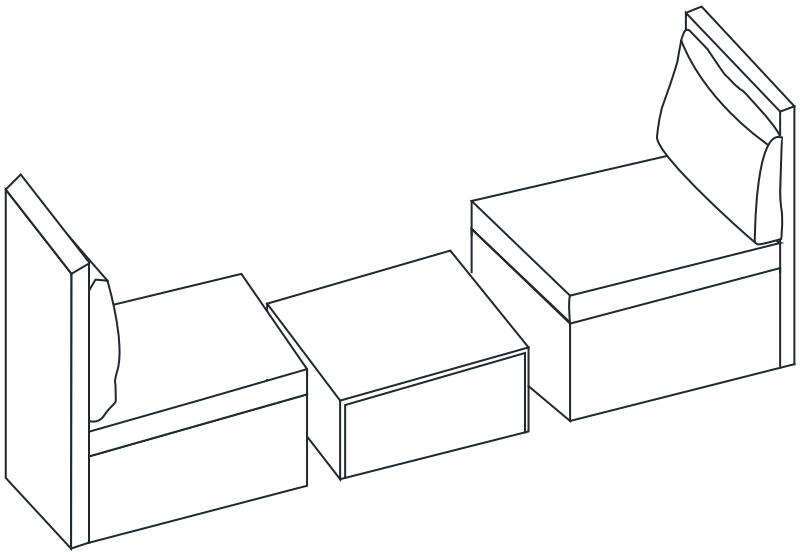


# INSTRUCTION MANUAL



**Logan Rattan 3 Piece Seating Group  
with Cushions  
SKU: OP112-C**

V1.0

## ! NOTICE

### Do not overtighten screws. (Insert all screws before tighten screws.)

- Please do not exceed the weight limitations of this item.
- Do not stand on or use any part of this item as a step ladder.
- Firmly secure all bolts, screws and nuts before use.
- Reconfirm that all bolts, screws, and nuts are secure every 90 days.
- Do not use or store this item in the proximity of open flame or flammable/combustible chemicals.
- Be aware that some parts are heavy and have sharp edges.

## TOOLS REQUIRED



ALLEN WRENCH  
(PROVIDED)



WRENCH  
(PROVIDED)



TABLE  
110 LBS  
CAPACITY



CHAIR  
330 LBS  
CAPACITY



1 PERSON  
ASSEMBLY



UP TO 60 MIN.  
ASSEMBLY

## HARDWARE

1

M6 x 50mm  
BOLT



12 PCS

2

M6 x 35mm  
BOLT



32 PCS

3

M6 WASHER



56 PCS

4

M6 NUT



12 PCS

5

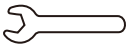
ALLEN  
WRENCH



1 PC

6

WRENCH

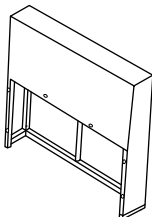


1 PC

## PARTS

A

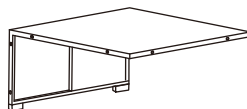
CHAIR BACKREST



2 PCS

B

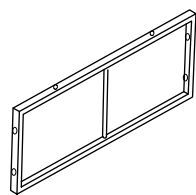
CHAIR SEAT



2 PCS

C

CHAIR SIDE PANEL

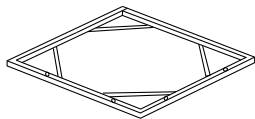


4 PCS

## PARTS

**D**

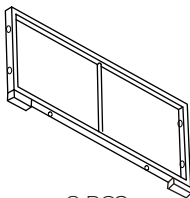
TABLE TOP



1 PC

**E**

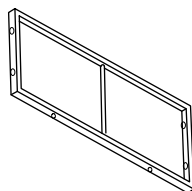
TABLE LONG PANEL



2 PCS

**F**

TABLE SIDE PANEL

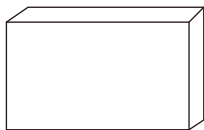


2 PCS

## CUSHION

**Z1**

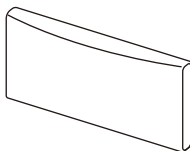
SEAT CUSHION



2 PCS

**Z2**

BACK CUSHION

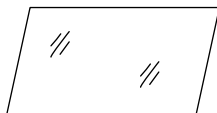


2 PCS

## GLASS

**Y1**

GLASS TOP

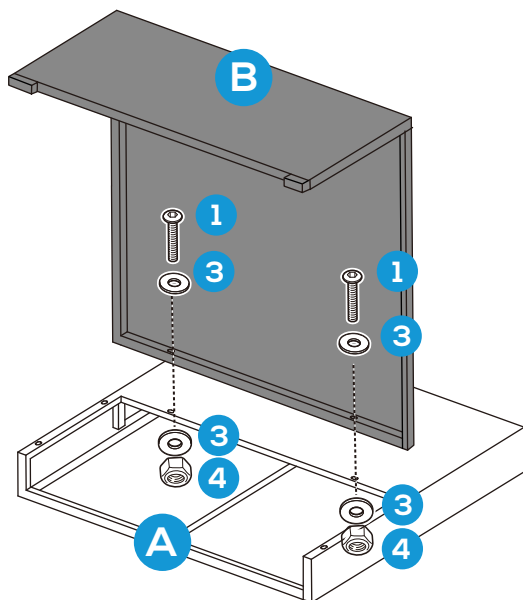


1 PC

## PRODUCT ASSEMBLY - SINGLE SEAT

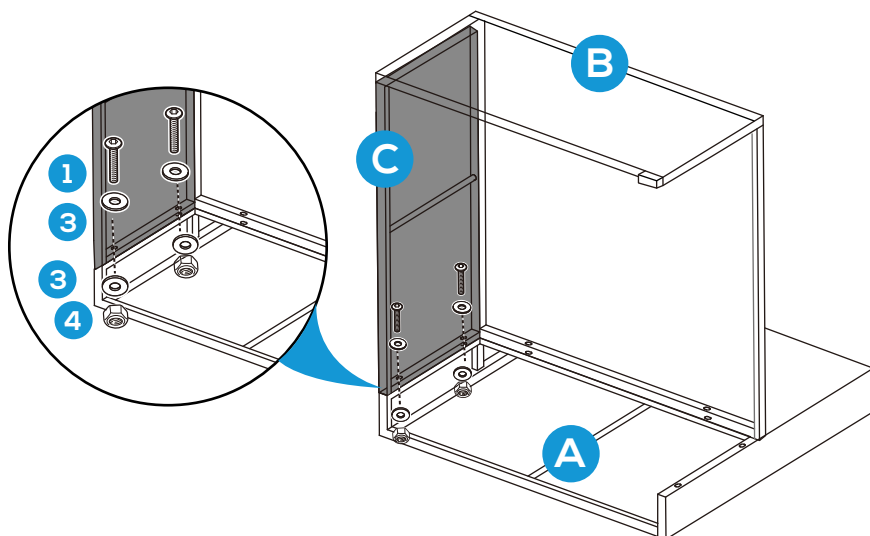
1

Attach part B Chair Seat to part A Chair Backrest with 2 PCS of part 1 bolt and part 4 nut as well as 4 PCS of part 3 washer.



2

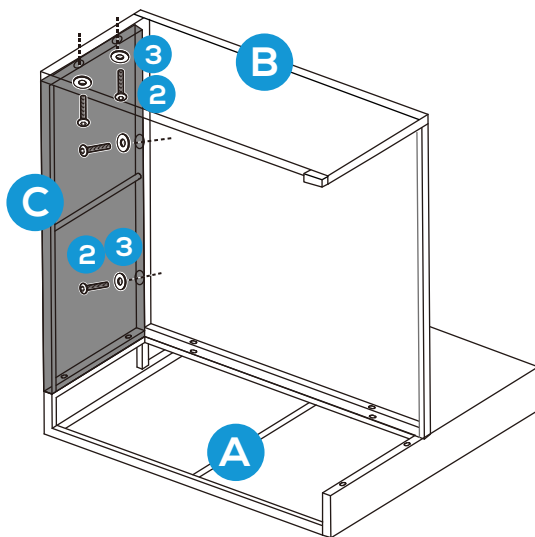
Attach part C Chair Side Panel to part A Chair Backrest with 2 PCS of part 1 bolt and part 4 Nut as well as 4 PCS of part 3 Washers.



## PRODUCT ASSEMBLY - SINGLE SEAT

3

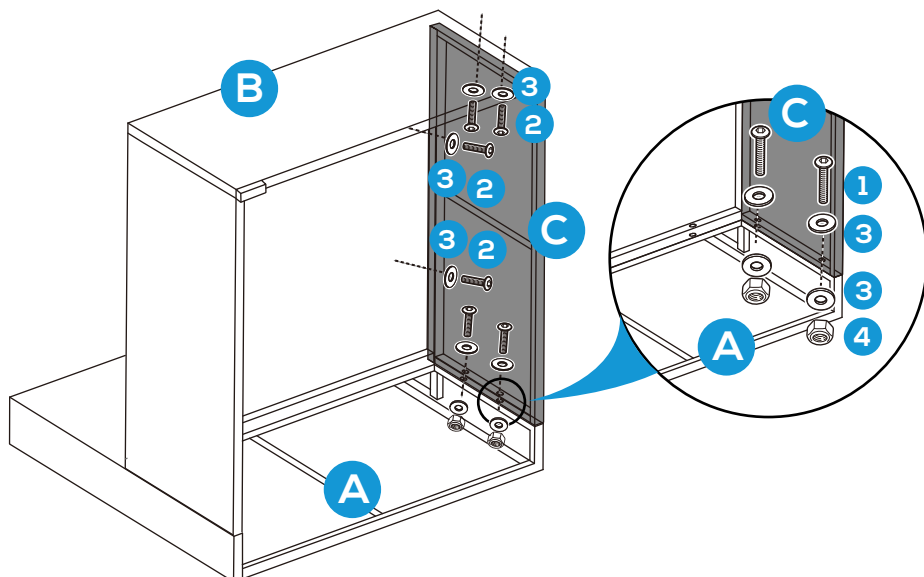
Attach part C Chair Side Panel to part B Chair Seat with 4 PCS of part 2 bolt and part 3 Washer.



4

Attach part C Chair Side Panel to part A Chair Backrest with 2 PCS of part 1 bolt and part 4 Nut as well as 4 PCS of part 3 Washers.

Attach part C Chair Side Panel to part B Chair seat with 4 PCS of part 2 Bolt and part 3 Washer.

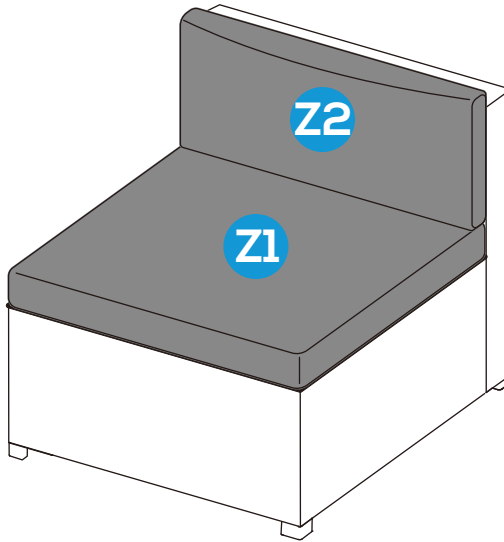


## PRODUCT ASSEMBLY - SINGLE SEAT

5

Place part Z1 Seat Cushion and part Z2 Back Cushion into the Chair to finish the assembly.

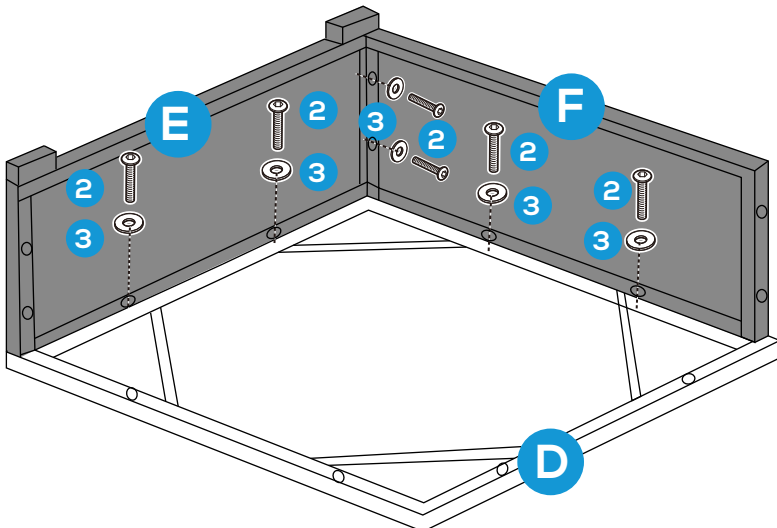
Do same to assemble another Single Chair.



## PRODUCT ASSEMBLY - COFFEE TABLE

6

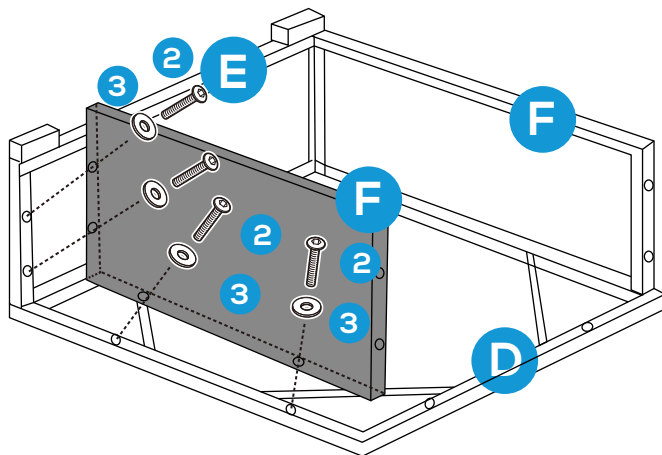
Attach part F Table Side Panel and part E Table Front Panel to part D Table Top with 6 PCS of part 2 bolt and part 3 washer as below.



## PRODUCT ASSEMBLY - COFFEE TABLE

7

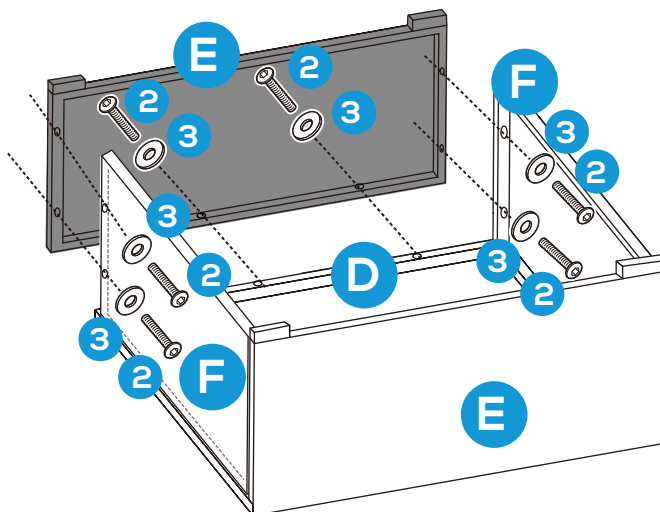
Attach part F Table Side Panel to part D Table Top and part E Table Front Panel with 4 PCS of part 2 bolt and part 3 washer.



8

Attach part E Table Front Panel to part F Table Side Panel and part D Table Top with 6 PCS of part 2 bolt and part 3 washer.

Tighten all the bolts again to ensure the steady of the coffee table.



## PRODUCT ASSEMBLY - COFFEE TABLE

9

Place part Y1 Glass Top to the coffee table to finish the assembly.

