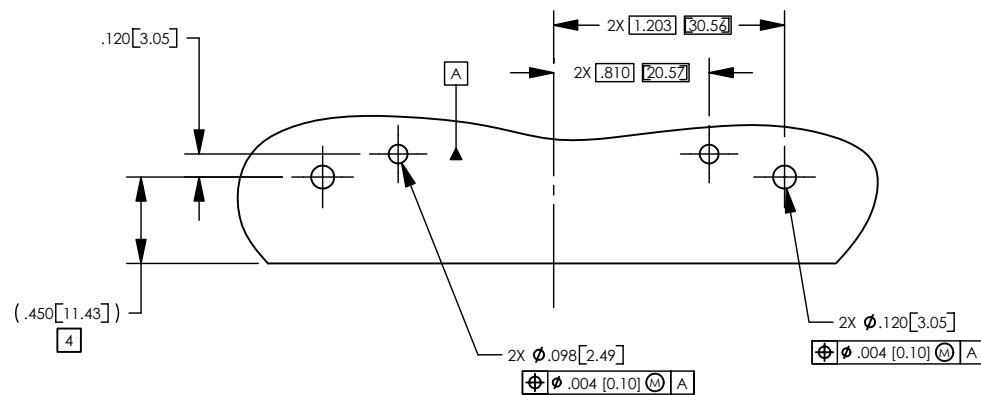
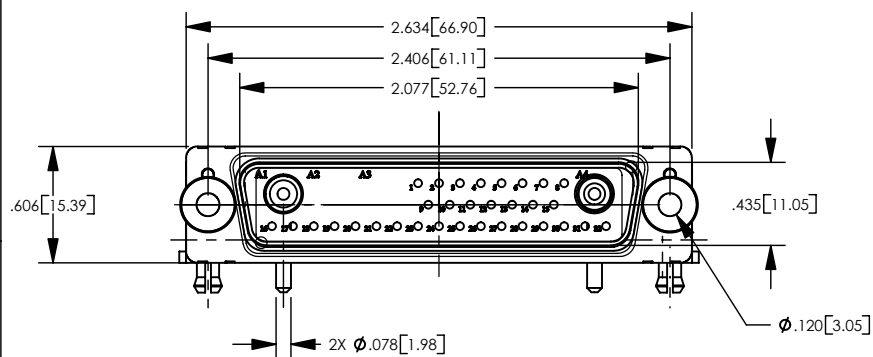
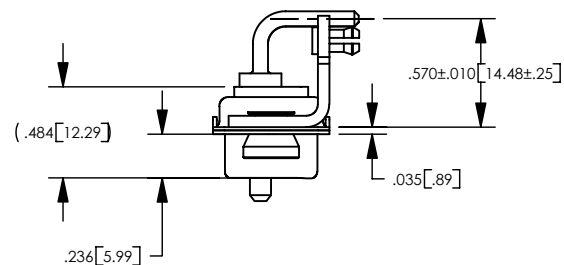
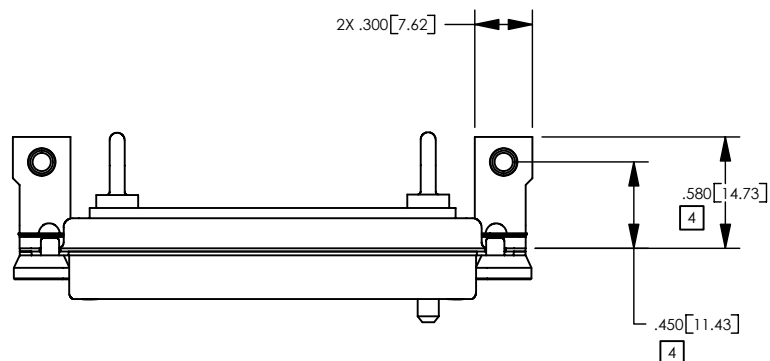


REV	DESCRIPTION	BY DATE	APPD
A	RELEASED PER ECR8681	CWB 09/16/05	RDO



NOTES: UNLESS OTHERWISE SPECIFIED

1. FOR GENERAL SERIES SPECIFICATIONS, SEE SD10-0000.
2. MATERIAL & FINISH SPECIFICATIONS:

SHELLS: COLD ROLLED STEEL PER ASTM A568
 FINISH: BLUE BRIGHT TRIVALENT CHROMIUM OVER ZINC PER ASTM B633.
 INSULATORS: HIGH TEMPERATURE THERMOPLASTIC
 BRACKETS: COLD ROLLED STEEL PER ASTM A568
 FINISH: BLUE BRIGHT TRIVALENT CHROMIUM OVER ZINC PER ASTM B633.
 GUIDE BUSHING: BRASS PER ASTM B16
 FINISH: BLUE BRIGHT TRIVALENT CHROMIUM OVER ZINC PER ASTM B633
 SNAP IN BOARD LOCKS: COPPER ALLOY
 FINISH: PURE TIN OVER NICKEL

3. FOR POWER CONTACT SPECIFICATIONS SEE CONTACT SALES DRAWINGS SD222-010-00415G & SD222-010-00416G.

4 FROM REAR OF D=SUB FLANGE.

RECOMENDED PCB LAYOUT
 VIEWED FROM COMPONENT
 SIDE OF P.C.B.
 PCB THICKNESS .063 [1.6]

PER ASME Y14.5M-1994 UNLESS OTHERWISE SPECIFIED: DIMENSIONS ARE IN INCHES [MM] TOLERANCES: DECIMAL: XX ± .01 [0.3] .XXX ± .005 [0.13] .XXXX ± .XXXX ANGLES: ± 2° SCALE: 1:1				NORTHROP GRUMMAN Winchester Electronics 62 Barnes Industrial Road North Wallingford, CT 06492			
CUSTOMER DRAWING				RIGHT ANGLE 34W2P-D-SUB RoHS COMPLIANT			
DRAWN CWB	DATE 09/01/05	APPROVED WPM	DATE 09/06/05	A SDRM34W2P-1010 SHT 1 OF 1 REV A			
APPROVED RBG	DATE 09/06/05	APPROVED JC	DATE 09/06/05				