



Thank you for purchasing thisSmoke alarm USI/SM/HW10YR/P and USI/SM/HW10YR/P/3 , smoke function is multi-station when interconnected. This model is powered by 120V AC with non-replaceable internal lithium battery back-up, which can be hardwired. It also contains a voice message system and SMART SILENT Control to temporarily silence nuisance alarms. THIS EQUIPMENT SHOULD BE INSTALLED IN ACCORDANCE WITH THE NATIONAL FIRE PROTECTION ASSOCIATION'S STANDARD 72 (National Fire Protection Association, Battery March Park, Quincy, MA 02269). Typical installation drawing layouts for the unit(s), indicating recommended locations and wiring methods, which shall be in accordance with the applicable requirements outlined in the following:

1. National Electrical Code, NFPA 70, Wiring Methods and Materials;
2. National Fire Alarm and Signaling Code, NFPA 72, Single- and Multiple-Station Alarms and Household Fire Alarm Systems for US requirement.

The National Fire Protection Association (NFPA) and the manufacturer recommend replacing this alarm ten years from the date code on back of alarm. This instruction manual contains important information on starting operation and using the devise. Please take a few minutes to thoroughly read the instruction manual and familiarize yourself and your family with its operation. And save it for future reference.

Supplier's Declaration of Conformity:
47 CFR § 2.1077 Compliance Information
Responsible Party: Feit Electric Company
4901 Gregg Road, Pico Rivera, CA 90660, USA
www.feit.com
Unique Identifier: USI/SM/HW10YR/P & USI/SM/HW10YR/P/3

Table of Contents
1. Smoke Alarm: Steps To Take When The Alarm Sounds
2. Product Safety Information
3. Product Features and Specifications
4. Where to Install Smoke Alarms
5. Installation Locations To Avoid
6. Installation Instructions
7. Battery Information
8. Alarm Operation And Testing
9. Alarm Visual and Audible Indicators
10. Troubleshooting
11. Good Safety Habits: Develop An Escape Plan
12. How to Identify Nuisance Alarms
13. Maintenance Information
14. Warranty Information

Smoke alarm pattern is three long beeps with voice "Fire!", "Incendie!", three long beeps, 1.5 seconds pause, repeating. The smoke alarm takes precedence when both smoke and carbon monoxide are present. **What to Do in Case of a Fire**

1. Stay Calm: Don't panic. Take a deep breath and stay as calm as possible.
2. Exit Quickly: Leave the house right away. Before opening any door, carefully touch it to see if it's hot. If it is, use another exit. Crawl low to the ground to avoid smoke and don't stop to grab anything.
3. Meet Outside: Go to a pre-arranged meeting spot outside where everyone knows to gather.
4. Call for Help: Once you're outside, call the fire department or 911.
5. Stay Out: Never go back into a burning house. Wait for the fire department to arrive and help.

Note: These steps are to help keep you safe in case of a fire. However, it's equally important to prevent fires by practicing fire safety habits at home and avoiding hazardous situations.

Practice Fire Safety with Your Family
When a smoke alarm goes off (and it's not a test), it's alerting you to a real danger. It's important to act right away. To be ready for emergencies, create a fire escape plan for your family, talk about it, and practice it often.

6. Familiarize Everyone with the Alarm: Let everyone in the family hear the smoke alarm so they know what it sounds like and understand that it signals danger.
7. Plan Two Exits: Identify two ways to exit each room and plan routes to get outside from each exit.
8. Teach Safe Door-Checking: Show everyone how to touch doors to check for heat. If the door is hot, they should use another exit.
9. Crawl Low: Teach everyone to crawl along the floor to stay under the smoke and avoid breathing harmful fumes.
10. Pick a Safe Meeting Spot: Choose a safe place outside where your family will meet once everyone is out of the house. Make sure everyone knows where it is.

Regular practice of these steps will help your family stay safe and prepared!

2. Product Safety Information

⚠ DANGER!-ELECTRICAL SHOCK HAZARD. Turn off the power to the area where the Smoke Alarm is installed before removing it from the mounting bracket. Failure to turn off the power first may result in serious electrical shock, injury or death.

⚠ WARNING! - PLEASE READ CAREFULLY AND THOROUGHLY.

THIS PRODUCT IS INTENDED FOR USE IN ORDINARY INDOOR RESIDENTIAL AREAS. IT IS NOT DESIGNED TO MEASURE COMPLIANCE WITH COMMERCIAL AND INDUSTRIAL STANDARDS. Installation of the alarm should not be used as a substitute for proper installation, use and maintenance of fuel burning appliances including appropriate ventilation and exhaust systems. Smoke alarms are not to be used with smoke alarm guards unless the combination has been evaluated and found suitable for that purpose. This combo smoke/CO alarm requires a continuous supply of electrical power – it will not work without power. Individuals with medical problems may consider using warning devices which provide audible and visual signals for carbon monoxide concentrations under 30 ppm. This alarm has not been investigated for carbon monoxide detection below 70 PPM. There are situations where a smoke alarm may not be effective to protect against fire as stated in the NFPA Standard 72. For instance:

- a. Fires where the victim is intimate with a flaming initiated fire; for example, when a person's clothes catch fire while cooking;
- b. Fires where the smoke is prevented from reaching the smoke alarm due to a closed door or other obstruction;
- c. Incendiary fires where the fire grows so rapidly that an occupants egress is blocked even with properly located smoke alarms.

This product is intended for use in ordinary indoor locations of family living units. It is not designed

to measure compliance with Occupational Safety and Health Administration (OSHA) commercial or industrial standards.

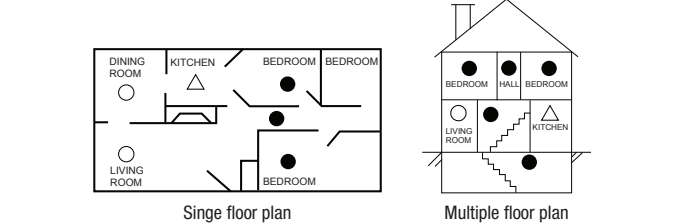
1. The TEST/SILENCE button accurately tests the device functions. Do not use any other test method. Test the device weekly to ensure proper operation. Do not install in non-residential buildings. This device is not a substitute for a complete alarm system.
2. If you're sure activation isn't a real alarm, open windows or fan the air around the device to silence it.
3. Observe and follow all local and national electrical and building codes for installation.
4. This Smoke alarm is designed to be used inside a single family only. In multifamily homes, each individual living unit should have its own smoke alarm devices.
5. Install a Smoke alarm in every room and on every level of the home. Smoke may not reach the smoke alarm for many reasons. For example, if a fire starts in a remote part of the home, on another level, in a chimney, wall, roof, or on the other side of a closed door, smoke may not reach the device in time to alert household members. This Smoke alarm will not promptly detect a fire or CO danger except in the area or room in which it is installed.
6. This Smoke alarm may not alert every household member every time. The alarm horn is loud in order to alert individuals to a potential danger. However, there may be some circumstances where a household member may not hear the alarm (i.e. outdoor or indoor noise, sound sleepers, drug or alcohol usage, the hard of hearing, etc.). If you suspect that this device may not alert a household member, should install and maintain other specialty smoke alarm devices. Household member must hear the alarm's warning sound and quickly respond to it to reduce the risk of damage, injury, or death that may result from fire. If a household member is hard of hearing, install other special smoke alarm with lights or vibrating devices to alert occupants.
7. This Smoke alarm can only sound their alarms when they detect smoke or detect combustion particles in the air. They do not sense heat, flame, or other gas. The device is designed to give audible warning of a developing fire. However, many fires are fast - burning, explosive, or intentional, and others are caused by carelessness or safety hazards. In these cases, smoke may not make the unit alarm QUICKLY ENOUGH to ensure safe escape.
8. This Smokealarm has limitations. The device is not foolproof and is not warranted to protect lives or property from fire. Smoke alarm or/and CO alarm are not a substitute for insurance. Homeowners and renters should insure their lives and property. In addition, it is possible for the device to fail at any time. For this reason, you must test the device weekly and replace every 10 years.

3. Product Features and Specifications

Model: USI/SM/HW10YR/P and USI/SM/HW10YR/P/3
Product standards:
Conf. to UL STD 217
Power Supply: 120VAC (60Hz, 30mA max, with 1*CR17450 internal lithium battery backup)
Hardwired Interconnection: Up to 18 interconnected devices (Maximum of 12 Smoke Alarms or Combo Alarms)
Sensor of Smoke: Multi-Criteria Optical
Smoke Alarm Sensitivity: 2.08%/ft +/-25% OBS
Smoke alarm silence: About 8 minutes
Voice message system
Product Life: 10 years after manufacture
Temperature Operating Range: 40°F (4.4°C) to 100°F (37.8°C)
Humidity Operating range: 10~95% RH non-condensing
Audible Alarm: ≥85dB at 10ft@ 3.0 to 3.5 KHz pulsing alarm, with voice messages "Fire!", "Incendie!"
Storage/Transport Ambient Condition: -20~+50°C, 10~95% RH non-condensing
Low Battery Warning Silence: About 10 hours
Installation Location: Ceiling or wall
Detection range: Max. 430ft² (40m²) within a room.
Size: About 6.1 x1.6 in.
Weight: 11.2 +/- 0.35 Oz

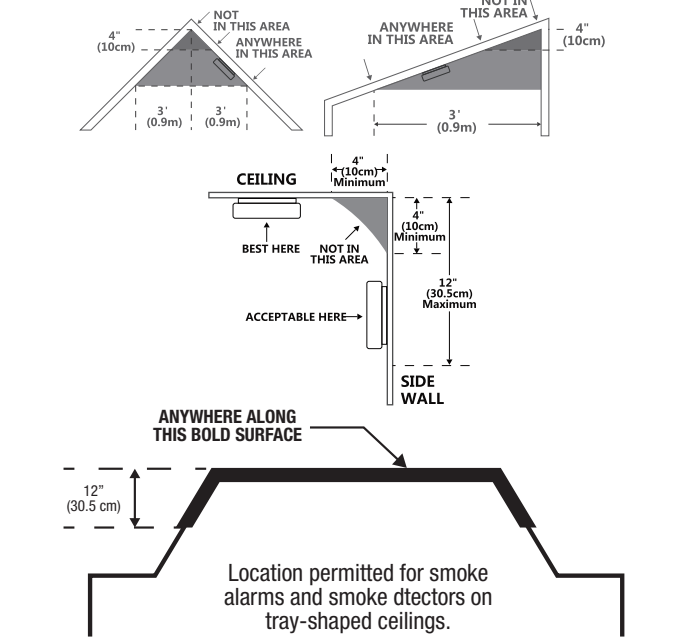
4. Where to Install Smoke Alarms

The following suggestions are intended to help you with the placement and installation of your smoke alarm.



- Smoke alarms for required protection
- Smoke alarms for additional protection
- △ Smoke alarms with silence control for additional protection

1. In all sleeping rooms and guest rooms.
2. Outside of each separate dwelling unit sleeping area, within 21 feet (6.4 m) of any door to a sleeping room, the distance measured along a path of travel.
3. On every level of a dwelling unit, including basements.
4. On every level of a residential board and care occupancy (small facility), including basements and excluding crawl spaces and unfinished attics.
5. In the living area(s) of a guest suite.
6. In the living area(s) of a residential board and care occupancy.
7. Smoke, heat, and combustion products rise to the ceiling and spread horizontally. Mounting the smoke alarm on the ceiling in the center of the room places it closest to all points in the room. Ceiling mounting is preferred in ordinary residential construction.
8. The device should be at least 6 feet (1.8 m) above the floor level.
9. When mounting a device on the ceiling, locate it at a minimum of 4 inch (10 cm) from the side wall.
10. When mounting the device on the wall, use an inside wall with top edge the alarm at a minimum of 4 inch (10 cm) and maximum of 12 inch (30.5 cm) below the ceiling.
11. Put the device at both ends of a bedroom hallway or large room if the hallway or room is more than 30 feet (9.1 m) long.
12. Install the device on sloped, peaked or cathedral ceilings at or within 3 feet (0.9 m) of the highest point (measured horizontally).

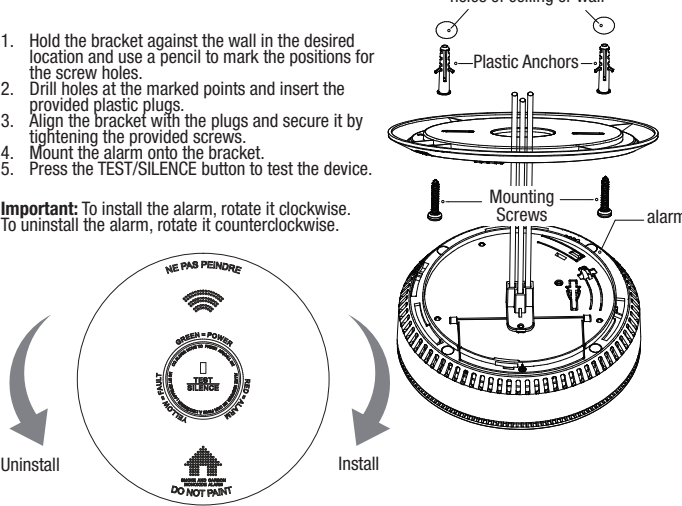


5. Installation Locations To Avoid

- To ensure the smoke alarm work properly and provide detection performance, do not install the device in the following places:
- Near appliances or areas where normal combustion regularly occurs (kitchens, near furnaces, hot water heaters). Install at least 10 feet (3m) away from these areas. Use specialized smoke alarm device with unwanted alarm control for this areas.
 - In areas with high humidity, like bathrooms or areas near dishwashers or washing machines or directly above a sink. Install at least 10 feet (3m) away from these areas.
 - Avoid spraying aerosols near the device.
 - Next to a door or window, an extractor fan, air returns or heating and cooling supply vents. Install at least 3 feet(0.9m) away from these areas. The air could blow smoke away from the device, interrupting its alarm.
 - In rooms where temperatures may fall below 0°C or rise above 40°C, or in humidity higher than 95%. These conditions will reduce battery life or cause a fault alarm.
 - In extremely dusty, dirty, or insect - infested areas influence particles interfere with the device operation.
 - In the garage. Products of combustion are present when you start your automobile.
 - In an enclosed space (for example in a cupboard or behind a curtain).
 - Where it can be obstructed (for example by furniture).
 - Less than 4 inch (10 cm) from the peak of an "A" frame type ceiling.
 - Near fluorescent lights. Electronic "noise" may cause nuisance alarms.
 - Place out of the reach of children. Under no circumstance should children be allowed to handle the device.
 - Normal cooking may cause nuisance alarms. If a kitchen alarm is desired, it should have an alarm silence feature and should not be installed within 6 feet(1.8m) of cooking appliances.

6. Installation Instructions

⚠ CAUTION! - THIS DEVICE SHOULD BE INSTALLED BY A COMPETENT PERSON.
⚠ WARNING! - THIS DEVICE SHOULD BE LOCATED IN AN OPEN AND UNOBSTRUCTED AREA AND SHALL NOT BE LOCATED BEHIND FURNITURE, DRAPES, OR ANY OTHER OBJECT WHERE IT MIGHT NOT BE SEEN OR HEARD. THE ALARM SHALL BE HEARD FROM ALL SLEEPING AREAS.
⚠ WARNING! - ALARM USERS SHOULD ADD THE PHONE NUMBERS OF THEIR EMERGENCY SERVICE PROVIDERS AND QUALIFIED TECHNICIANS ON THE TWO SELF-ADHESIVE LABELS PROVIDED BY THE ALARM MANUFACTURER. USERS SHOULD PLACE ONE LABEL NEXT TO THE ALARM AND ANOTHER NEAR THE SOURCE OF FRESH AIR THEY PLAN TO GATHER. WHEN THE ALARM INDICATES THE PRESENCE OF CARBON MONOXIDE, THE USER CAN ESCAPE AS PLANNED. IF YOU INSTAL ONLY ONE DEVICE IN YOUR HOME, INSTALL THE DEVICE NEAR BEDROOMS, NOT IN THE BASEMENT OR FURNACE ROOM.



Note: Dust Cover is included to keep the alarm clean during construction.

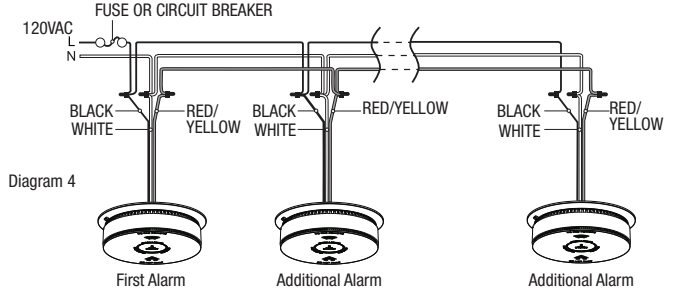
Wiring Requirements

- This alarm should be installed on a UL-listed or recognized junction box. All connections should be made by a qualified electrician, and the electrical wiring used shall be in accordance with Articles 210 and 300.3(B) of the U.S. National Electrical Code (ANSI/NFPA 70, NFPA 72). And/or any other codes having jurisdiction in your area. The multiple-station interconnect wiring to the alarms must be run on the same raceway or cable as the AC power wiring.
- In addition, the resistance of the interconnect wiring shall be a maximum of 10 ohms.
- The appropriate power source is 120 Volt AC single phase supplied from a non-switchable circuit.
- Smoke alarms are not to be used with detector guards unless the combination (alarm and detector guard) has been evaluated and found suitable for that purpose.
- To reduce the likelihood of nuisance alarm of the device, the accommodation spaces should be well-ventilated when household cleaning supplies or similar contaminants are used.
- The alarm was not designed, agency tested or certified for recessed mounting and should not be installed in this manner. Recessed mounting impedes smoke entry into the smoke chamber, which may prevent the alarm from sounding in a timely manner. This could endanger the lives of occupants in the residence. The alarm was designed, tested and certified for wall (if applicable) and ceiling surface mount only.

⚠ WARNING! The alarm cannot be operated with power derived from a square wave or modified square wave. Wave, or modified sine wave, inverter. These types of inverters are sometimes used to supply power to the structure in off-grid installations, such as solar or wind-derived power sources. These power sources produce high peak voltages that will damage the alarm.

Wiring instructions for AC quick Connector Harness
⚠ CAUTION! - TURN OFF THE MAIN POWER TO THE CIRCUIT BEFORE WIRING THE ALARM.
⚠ DANGER! - ELECTRICAL SHOCK HAZARD. Turn off the power to the circuit before wiring the alarm. Failure to turn off the power first may result in serious electrical shock, injury or death.
Improper wiring of the power connector or the wiring leading to the power connector will cause damage to the Alarm and may lead to a non-functioning alarm.

- For alarms that are used as single stations, do not connect the red wire to anything. Leave the red wire insulating cap in place to make certain that the red wire cannot contact any metal parts or the electrical box.
- The wire colors are:
Black = Live
White = Neutral
Red = Interconnect
- Make certain alarms are wired to a continuous (non-switched) power line.



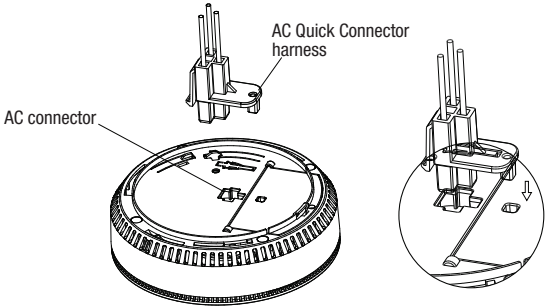
Note: Use standard UL Listed household wire (as required by local codes) available at all electrical supply stores and most hardware stores.

⚠ CAUTION! - IMPROPER WIRING OF THE POWER CONNECTOR OR THE WIRING LEADING TO THE POWER CONNECTOR WILL CAUSE DAMAGE TO THE ALARM AND MAY LEAD TO A NON-FUNCTIONING ALARM. ALL POWER CONNECTIONS SHOULD BE DONE USING WIRE-NUTS.

1. Turn off the power to the circuit before wiring the alarm.
2. Remove the mounting bracket from the base and attach it to the junction box.
3. Using wire nuts (not included), connect the AC QUICK Connector harness to the household wiring.
4. Plug the AC QUICK CONNECTOR into the back of the unit, making sure that the locks on the connector snap into place.
5. Check all connections. Then push the excess wire back into the electrical box through the hole in the center of the mounting bracket.
6. Rotate the alarm in the clockwise direction and install the alarm completely on the mounting bracket.

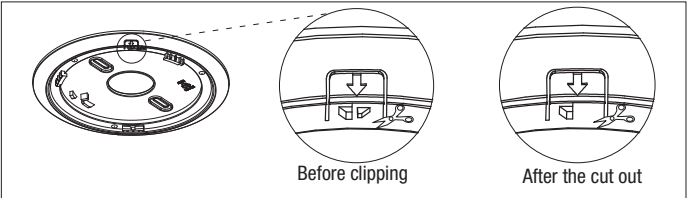
- If you are interconnecting multiple Smoke alarms, repeat steps 1-9 for each Smoke Alarm in the series. When you are finished, restore power to the junction box.

- ⚠ WARNING! - TO PREVENT INJURY, THIS DEVICE MUST BE SECURELY ATTACHED TO THE CEILING/WALL IN ACCORDANCE WITH THE INSTALLATION INSTRUCTIONS. SMOKE WILL NOT BE ABLE TO REACH THE SMOKE SENSOR WHILE THE DUST COVER IS IN PLACE. DUST COVER MUST BE REMOVED!**

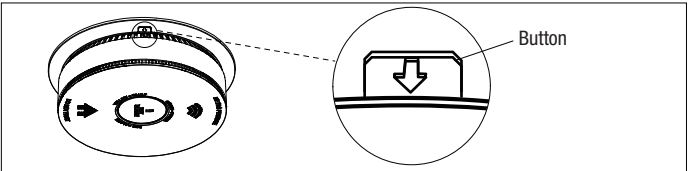


- All interconnected alarms must be supplied from a single power circuit.
- Do not connect Interconnect wires to a line or neutral connection. An improper connection will result in damage to the alarm, failure to operate, or a shock hazard. Check the connections carefully before turning them on the main power to the circuit. Interconnect Wiring Diagram: See Diagram 4.
- A maximum of 12 smoke alarms may be interconnected in a multiple-station arrangement.
- The maximum wire run distance between the first and last unit in an interconnected system is 1000 feet.
- All wiring must conform to all local electrical codes and NFPA 70 (NEC). Refer to NFPA 72, NFPA 101, and/or your local building code for further connection requirements.

The locking feature is designed to discourage unauthorized removal of the Alarm. It is not necessary to activate the locks in single-family households where unauthorized battery or Alarm removal is not a concern.

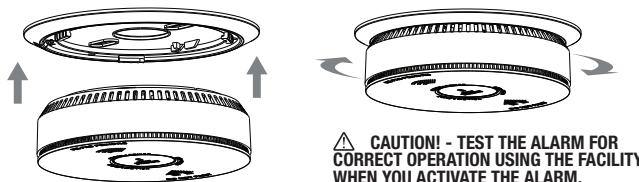


1. Remove the small triangular tab from the bracket to activate the locking feature.
2. Rotate the alarm clockwise to install it securely.

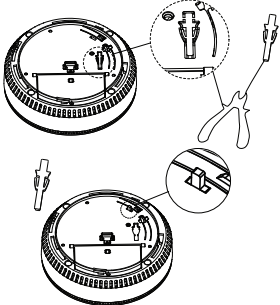


3. To remove the alarm unit, press the release button on the bracket while rotating the unit counterclockwise.

After the unit is fully mounted into the mounting bracket, it will be automatically activated.



Note: A dust cover has been placed on the alarm. Keep the dust cover in place until all construction activities (such as drywall work, painting, varnishing, or installing the mounting plate) have been completed for at least 24 hours. Save the dust cover and use it again to protect the alarm during any future construction projects. Construction dust and chemicals can cause contamination and trigger false alarms.



The diagram shows a circular alarm unit with various components labeled:

- Voice:** Points to the top speaker grille.
- LED Indicator:** Points to the central LED light.
- TEST/SILENCE button:** Points to the button below the LED indicator.
- Speaker:** Points to the bottom speaker grille.

Text on the unit includes:

- Top: NE PAS PEINDRE
- Center: GREEN = POWER, TEST, SILENCE
- Bottom: DO NOT PRINT

Legend:

- GREEN = POWER
- YELLOW = FAULT
- RED = ALARM

If the unit begins to chirp due to low battery or End-of-Life mode, you can temporarily silence it by pressing the TEST/SILENCE button. See the Troubleshooting Guide for further instructions.

Note: Replace the unit immediately when it enters End-of-Life mode to ensure continued protection.

Operate Mode	Visual (Flash)	Audible (Beep / Voice)	Description Mode
Normal (standby)	AC power: Green LED on continuously DC power: Green LED flashes every 40 seconds	None	None
Test	RED LED flashes in time with alarm pattern.	Long press Test/Silence button; Three long beeps, Voice "Fire!", "Incendie!" Three long beeps; Pause for a second four quick beeps, Voice "Warning, carbon monoxide", "Attention! Monoxyde de carbon!", four quick beeps.	Press Test/Silence button once a week to verify proper alarm operation.
Smoke Alarm	RED LED flashes once a second.	Three long beeps with voice "Fire!", "Incendie!", three long beeps, 1.5 seconds pause, repeating.	None
Smoke Alarm Silent Mode	RED LED flashes every 8 seconds.	Mute time for eight minutes	This feature is to be used only when a known alarm condition, such as smoke from cooking, activates the alarm.
High smoke levels cannot be silenced.	None	Voice "Too much smoke, cannot be silenced", "Trop de fumée, mode silencieux impossible".	None
Alarm memory mode	RED LED flashes every 40 seconds.	After button press, "Fire alarm before, The total number of historical alarms is X", "Alarme incendie avant, Le nombre total d'alarmes en mémoire est de X". "Carbon monoxide alarm before, XXX PPM" The total number of historical alarms is "X" détection de monoxyde de carbone avant, XXX PPM". Le nombre total d'alarmes en mémoire est de X".	This feature will help the user determine which alarm went off. This status can maintain 72 hours. You can exit the visual indicator by pressing the button 3 times in succession. The voice will always exist.
Hardwired Interconnect Alarm mode	None	3 long beeps, loop repeat.	None
Hardwired Interconnect Alarm memory mode	RED LED flashes every 1 second	None	This status lasts for 3 minutes before exit. This function indicates that an interconnected alarm has occurred.

Trouble Condition	Visual (flash)	Audible (Beep / Voice)	Description mode / Action
Low battery warning	Yellow LED flashes every 40 seconds.	Voice"Low battery", "Pile faible".	Press Test/Silence button once to silence for 10h. Replace batteries as soon as possible.
Smoke sensor fault warning	Yellow LED flashes every 40 seconds.	Voice"Smoke sensor error", "Erreur du capteur de fumée".	Review Cleaning Your Alarm section. Remove and dispose your unit, and replace as soon as possible.
End-of-Life	Yellow LED flashes twice every 40 seconds.	Voice "End of life", "Fin de vie".	Press Test/Silence button once to silence for 10 hours. Remove and dispose your unit, and replace as soon as possible.

- Make a floor plan indicating all doors and windows and least two escape routes from each room. Second story windows may need a rope or chain ladder.
- Have a family meeting and discuss your escape plan, showing everyone what to do in case of fire and where to meet after they leave the house.
- Ensure that small children hear the alarm and wake when it sounds. They must wake up on order to execute the escape plan. Practice allows all occupants to test your plan before an emergency. You may not be able to reach your children. It is important they know what to do.
- Familiarize everyone with the sound of the smoke alarm and train them to leave you home when they hear it.
- Current studies have shown smoke alarms may not awaken all sleeping individuals, and that it is the responsibility of individuals in the household that are capable of assisting other to provide assistance to those who may not be awakened by the alarm sound, or to those who may be incapable of safely evacuating the area unassisted.
- Install and maintain fire extinguishers on every level of the home and in the kitchen, basement and garage. Know how to use a fire extinguisher prior to an emergency.

This alarm is designed to minimize nuisance alarms. Cigarette smoke will not normally cause the unit to alarm, unless the smoke is blown directly into the alarm. Combustion particles from cooking may set off the alarm if it is located too close to a cooking appliance. Large quantities of combustible particles are generated from spills or when broiling. Using the fan on a range hood which vents to the outside (non-recirculating type) will also help prevent nuisance alarms from occurring by removing these combustible products from the kitchen.

1. Press the TEST/SILENCE button once a week to verify the sound and indicator operation.
2. Remove the alarm from the ceiling and use a soft brush attachment to clean the cover and vents monthly to eliminate dust and debris.
3. Do not use detergents or solvents, as these may damage the unit.
4. Avoid spraying air fresheners, hair spray, or other aerosols near the device to prevent interference.
5. Never paint the device, as this will seal vents and compromise sensor function. Avoid disassembling or cleaning the interior to maintain your warranty.
6. Reinstall the alarm immediately after cleaning to ensure continuous fire and CO protection.
7. Ventilate the area when using household cleaning products or chemicals nearby.

⚠ WARNING! - The following substances can affect the sensor and may cause false actions: methane, propane, isobutene, isopropanol, ethylene, benzene, toluene, ethyl acetate, hydrogen sulfide, sulfur dioxides, alcohol based products, paints, thinner, solvents, adhesives, hair sprays, after shaves, perfumes and some cleaning agents.

⚠ WARNING! - Your smoke alarm will not be operational and will not monitor for smoke levels without battery.

This product is warranted to be free from defects in material and workmanship for a period of 10 (ten) years from the date of purchase. For products containing a sealed battery, this warranty does not cover any damage that may be caused by the battery. Warranty does not apply to replaceable battery. This warranty applies only to the original consumer purchaser and only to products used in normal residential use and service. If this product is found to be defective, the only obligation, and your exclusive remedy, is the repair or replacement of the product, at the company's discretion, provided that the product has not been damaged through misuse, abuse, accident, modification, alteration, neglect, or mishandling. This Warranty shall not apply to any product which is found to have been improperly installed, set-up, or used in any way not in accordance with the instructions supplied with this product.

For replacement of this alarm under the terms of this Warranty, please contact customer service at **feit.com/help** for assistance. The company does not warrant, and specifically disclaims any warranty, whether express or implied, of fitness for a particular purpose, other than the warranty contained herein. No implied warranty on this product, created by state law, shall extend beyond the term of this warranty unless such law otherwise provides. The company specifically disclaims any liability and shall not be liable for any consequential or incidental loss or damage, including, but not limited to, damages to any equipment with which this product is used. Some states do not allow the exclusion or limitation of incidental or consequential damages, so the above limitations or exclusions may not apply to you. No agent, representative, dealer, or employee of the company has the authority to increase or alter the obligations or terms of this Warranty. This Warranty gives you specific legal rights and you may also have other rights which vary from state to state. This Warranty is only valid for merchandise purchased from outlets in the United States and Canada. This warranty expires upon product end-of-service life signal.