

# PEX-A Oxygen Barrier Pipe

Job Name	_____
Location	_____
Engineer	_____
Contractor	_____
Tag	_____ PO# _____

## Specifications

- Approved for use with F1960 expansion fittings
- Flexible and easy to install
- Freeze, corrosion, and chlorine resistant

## Applications

- Hot and cold water distribution systems
- Radiant/Hydronic applications

## Materials

- Crosslinked Polyethylene

## Certifications/Listings/Approvals

- NSF certified to ASTM F876/877 and CSA B137.5 per NSF14
- NSF/ANSI 14 approved
- ASTM E84, F876, F877, and F2023 approved

## Chlorine/UV Resistance

- 5106

## Pressure and Temperature Ratings (Hydrostatic)

- 73°F at 160 psi (23°C at 11 bar)
- 180°F at 100 psi (82°C at 6.9 bar) \*
- 200°F at 80 psi (93°C at 5.5 bar) \*

\* Ratings stated are hydrostatic ratings. For domestic hot water and hot water recirculation, do not exceed 140°F at 80 psi (60°C at 5.5bar).

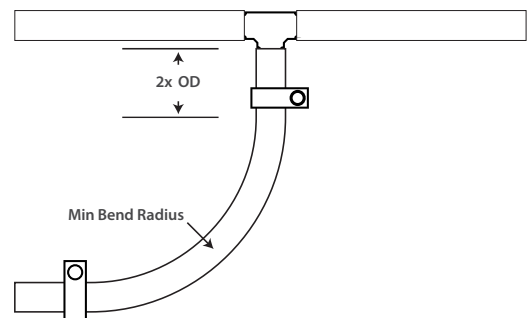
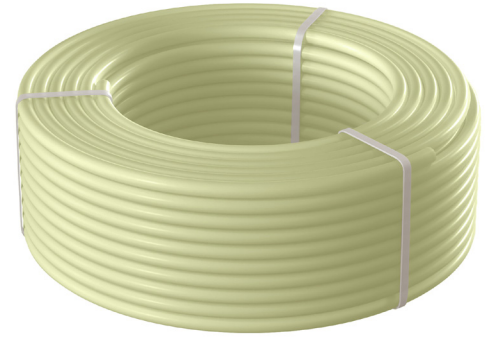
## Linear Expansion Rate

- JS PEX-A expands and contracts at a rate of 1.1" per 100' per 10 degree change in temperature (delta T)

## Minimum Bending Radius

- Minimum bend radius is 6x the Outer Diameter (OD) of the pipe. If using coiled piping and bending against the coil direction, the minimum bend radius should be increased by three.
- JS recommends a minimum distance of 2x the OD before changing pipe direction.

TUBING SIZE	MIN BENDING RADIUS	2 X (OD)
0.50"	3.75" (95mm)	1.25"
0.75"	5.25" (133mm)	1.75"
1.00"	6.75" (171mm)	2.25"
1.25"	8.25" (210mm)	2.5"
1.50"	9.75" (248mm)	3.25"
2.00"	12.75" (324mm)	4.25"



**Dimensions and Product Offering**

PART NO.	DESCRIPTION	OD	OD TOLERANCE	WALL THICKNESS	WALL THICKNESS TOLERANCE
F76817	1/2" x 20' Natural Oxygen Barrier, 25 Straights	0.625"	±0.004"	0.070"	+0.010"
F76818	1/2" x 100' Natural Oxygen Barrier, Coil	0.625"	±0.004"	0.070"	+0.010"
F76819	1/2" x 300' Natural Oxygen Barrier, Coil	0.625"	±0.004"	0.070"	+0.010"
F76820	1/2" x 500' Natural Oxygen Barrier, Coil	0.625"	±0.004"	0.070"	+0.010"
F76821	1/2" x 1000' Natural Oxygen Barrier, Coil	0.625"	±0.004"	0.070"	+0.010"
F76822	5/8" x 20' Natural Oxygen Barrier, 15 Straights	0.750"	±0.004"	0.083"	+0.010"
F76823	5/8" x 100' Natural Oxygen Barrier, Coil	0.750"	±0.004"	0.083"	+0.010"
F76824	5/8" x 300' Natural Oxygen Barrier, Coil	0.750"	±0.004"	0.083"	+0.010"
F76825	5/8" x 400' Natural Oxygen Barrier, Coil	0.750"	±0.004"	0.083"	+0.010"
F76826	5/8" x 1000' Natural Oxygen Barrier, Coil	0.750"	±0.004"	0.083"	+0.010"
F76083	3/4" x 20' Natural Pipe, Pack of 15 Straight Lengths	0.875"	±0.004"	0.097"	+0.010"
F76827	3/4" x 100' Natural Oxygen Barrier, Coil	0.875"	±0.004"	0.097"	+0.010"
F76828	3/4" x 300' Natural Oxygen Barrier, Coil	0.875"	±0.004"	0.097"	+0.010"
F76829	3/4" x 500' Natural Oxygen Barrier, Coil	0.875"	±0.004"	0.097"	+0.010"
F76830	3/4" x 1000' Natural Oxygen Barrier, Coil	0.875"	±0.004"	0.097"	+0.010"
F76014	1-1/2" x 20' Natural Oxygen Barrier, 5 Straights	1.625"	±0.006"	0.191"	+0.019"
F76017	1-1/2" x 100' Natural Oxygen Barrier, Coil	1.625"	±0.006"	0.191"	+0.019"
F76020	1-1/2" x 300' Natural Oxygen Barrier, Coil	1.625"	±0.006"	0.191"	+0.019"
F76013	1-1/4" x 20' Natural Oxygen Barrier, 5 Straights	1.375"	±0.005"	0.161"	+0.015"
F76016	1-1/4" x 100' Natural Oxygen Barrier, Coil	1.375"	±0.005"	0.161"	+0.015"
F76019	1-1/4" x 300' Natural Oxygen Barrier, Coil	1.375"	±0.005"	0.161"	+0.015"
F76015	2" x 20' Natural Oxygen Barrier, 5 Straights	2.125"	±0.006"	0.248"	+0.024"
F76018	2" x 100' Natural Oxygen Barrier, Coil	2.125"	±0.006"	0.248"	+0.024"