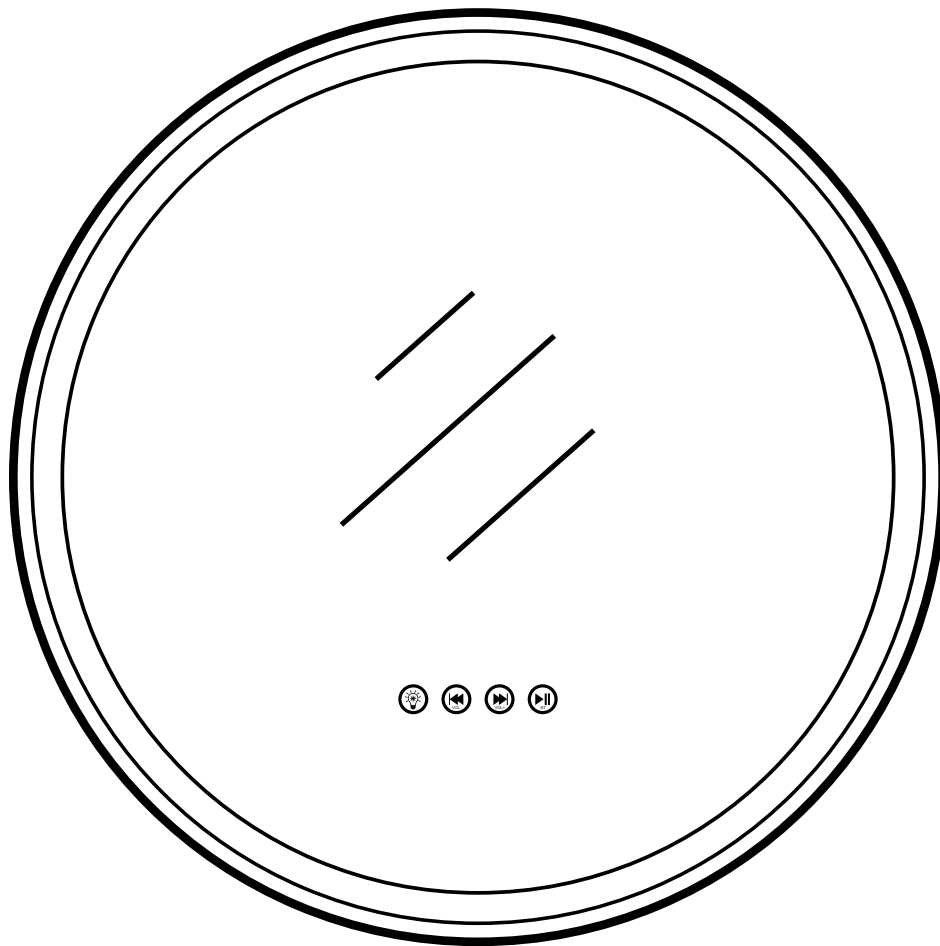


Monaco LED Mirror

INSTALLATION INSTRUCTIONS





PRIOR TO INSTALLATION:

- Inspect product to ensure no damages have occurred while in shipping.
- Observe all plumbing and building codes in accordance with your state and local requirements.
- All dimensions are nominal! Be sure to measure your mirror prior to installation.
- The step-by-step guidelines in the installation instructions are a general reference. Should there be any discrepancies, Swiss Madison cannot be held liable. It is recommended to install all Swiss Madison products by hiring a licensed professional.
- Read installation and maintenance instructions thoroughly before installing. Be sure to use proper tools and always wear proper personal safety accessories for your protection.

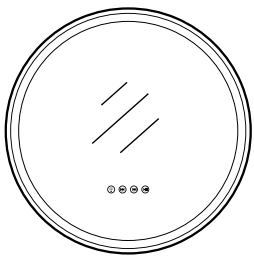
QUESTIONS OR CONCERNS?

Please contact us:

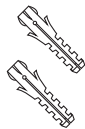
1-434-623-4766

info@swissmadison.com

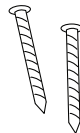
INCLUDED PARTS:



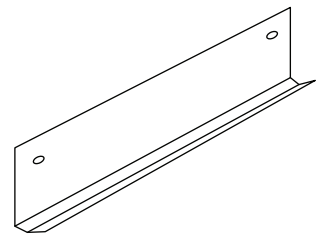
Vanity Mirror



Plastic anchors



Screws



Hanging Bracket

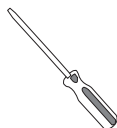
SUGGESTED TOOLS & MATERIALS:



Safety Glasses



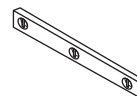
Hammer



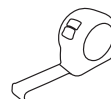
Screwdriver



Drill



Level



Tape Measure



Pencil

INSTALLATION:

1 Hanging bracket Installation

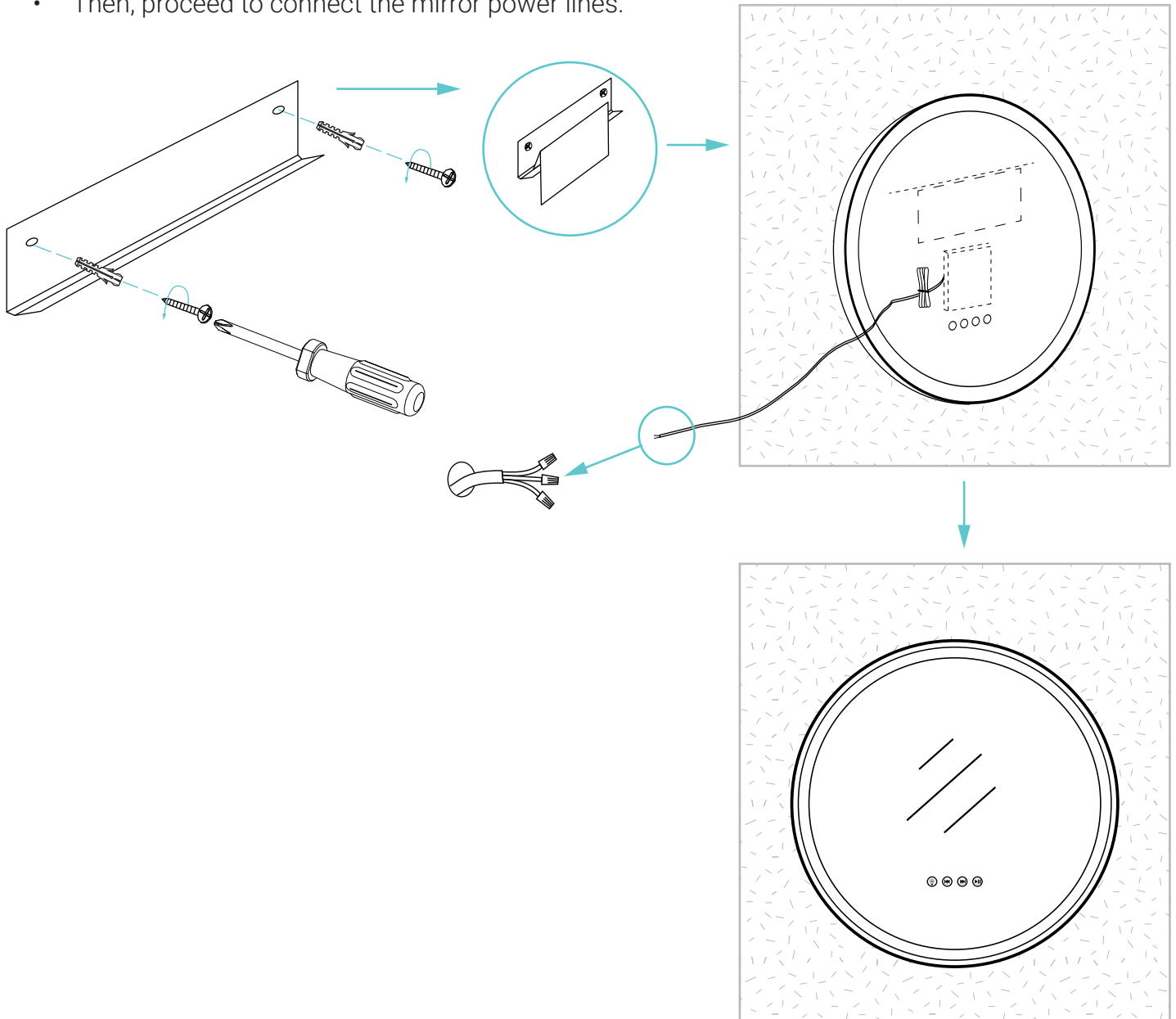
- Mark pilot holes on the wall using the pre-drilled holes on the mounting bracket as a guide.

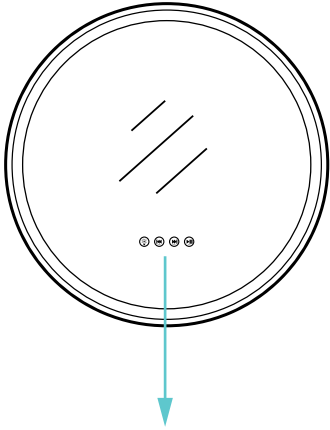
NOTE: use a level to ensure the bracket is aligned properly.

- Drill holes in the market location and insert the plastic anchor. Fix the aluminum bracket to the wall using the provided screws.

2 Hanging the mirror

- Make sure power to the hardwiring is completely off.
- Then, proceed to connect the mirror power lines.



FEATURE FUNCTIONS:

Short press button to turn on the light and Anti-fog together.
Short press button to adjust the light color temperature: cold, neutral, warm light.
Short press button to turn off the light or remove anti-fog.
Press and hold button to adjust the brightness when the light is on.



When the bluetooth speaker is playing, short press for previous song, and long press to reduce the music volume.



When the bluetooth speaker is playing, short press for next song, and long press to increase the music volume.



Press and hold button to put the bluetooth speaker in to pairing mode.
Now you can connect specker with your phone and play music.
Short press button to pause/play music.
Press and hold again to turn off bluetooth device.

ONE YEAR LIMITED WARRANTY

Swiss Madison® products are made with quality materials and excellent craftsmanship to provide our customers with beautiful, durable, long-lasting products. Should there be any defects in materials or craftsmanship under regular use that are discovered within the first year of installation, Swiss Madison® will provide replacement parts at no charge, or at its discretion, replace any product or part of the product that is deemed defective, under normal installation, use, service or maintenance. This warranty applies only to the original purchaser. Proof of purchase will be required in the instance of a claim.

Swiss Madison® recommends all installations of Swiss Madison® products to be conducted by a licensed, professional plumber or contractor. Swiss Madison® will not be held responsible for any damage or product failure due to improper installation, misuse, or failure to utilize a licensed professional for installation. Swiss Madison® is not responsible for any installation or removal costs.

THIS ONE YEAR LIMITED WARRANTY WILL BE VOIDED IF:

- The installation recommendations were not followed by the installer
- The product has been moved from its initial place of installation
- The product has in any way been modified from its packaged state
- The product has been subjected to improper maintenance, abuse, misuse, excessive use of chemicals, accidents, or other damages, etc.

Swiss Madison® makes no implication that its products comply with any local building or plumbing codes. It is the consumer's responsibility and obligation to determine local code compliance prior to and during installation. This warranty extends only to the original purchaser and first consumer.

Swiss Madison® is not responsible for any special, incidental or consequential damages associated with the installation, replacement, return or use of the original purchaser's product. This includes, but is not limited to: freight costs, labor, travel time, lost profit, home damages and other contingent liabilities and costs (including, without limitation, costs associated with 'professionals' or 'experts', investigations, audits, analyses, attorneys and any other professional/hired services).

The Swiss Madison® warranty is a comprehensive and explicit limit of liability. All items not disclosed within the warranty are not addressable within the responsibility of Swiss Madison®. Certain states have variances regarding implied warranties; in those situations, we remain fully compliant.

QUESTIONS OR CONCERNS?

Please contact us directly at 1-434-MADISON (623-4766)



WARNING:

Contents of your order may contain sharp and possibly other harmful pieces and may cause hazard to children and adults. Swiss Madison® is not responsible in any way for personal damages.