

OVERVIEW

The nLight nAR40 Series auxiliary relay pack is a device that enables convenient switching of low voltages primarily for interfacing with non-nLight devices or control systems. Its two RJ-45 connectors make control wiring with standard CAT-5 cabling easy and clean. For simplifying installation, an auxiliary relay pack has an elongated chase nipple that allows it to be attached directly through a 1/2" knockout into a junction box.

FEATURES

- Communicates w/ nLight Network
- Remotely Configurable/Upgradeable
- Push-Button Programmable
- Reversible Relay Logic
- Plenum Rated
- Green LED Indicator

Buy American Act

Product with the BAA option is assembled in the USA and meets the Buy America(n) government procurement requirements under FAR, DFARS and DOT regulations. Please refer to www.acuitybrands.com/buy-american for additional information.

Warranty

Five-year limited warranty. This is the only warranty provided and no other statements in this specification sheet create any warranty of any kind. All other express and implied warranties are disclaimed. Complete warranty terms located at: www.acuitybrands.com/support/warranty/terms-and-conditions

Note: Actual performance may differ as a result of end-user environment and application. Specifications subject to change without notice.



nAR 40
Auxiliary Relay



This item is an A+ capable component, which has been designed and tested to provide out-of-the-box luminaire compatibility with simple commissioning, when included as part of an A+ Certified™ Solution. To learn more about A+, visit www.acuitybrands.com/aplus.



Items marked by a shaded background qualify for the Design Select program and ship in 15 days or less. To learn more about Design Select, visit www.acuitybrands.com/designselect. *See ordering tree for details



ds Design Select options indicated by this color background.

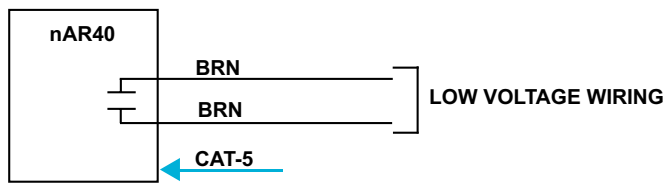
ORDERING INFORMATION

nAR40		Example: nAR40
Series	Temp/Humidity	Buy America(n) ¹
nAR40	[blank] Standard LT Low temp	[blank] Standard BAA Buy America(n) Act Compliant

Notes:
1. Not available with LT

WIRING (DO NOT WIRE HOT)

Sensor power is provided via the CAT-5 connection. CAT-5 cables can be wired using either T568A or T568B pin/pair assignments.



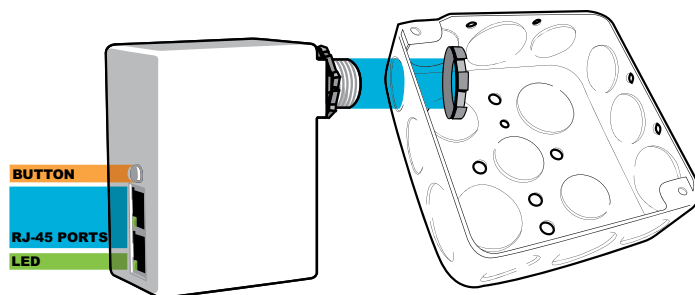
OPERATIONAL SETTINGS

Several operational settings for the nAR40 are available:

Override (On/Off/Normal)	Switch Tracking Channel (1-16)
Occupancy Tracking (Enable/Disable)	Button Mode (Enable/Disable)
Photocell Tracking (Enable/Disable)	Start to High (Enable/Disable)
Switch Tracking (Enable/Disable)	Invert Relay Logic (Enable/Disable)
Occupancy Tracking Channel (1-16)	LED (Override On/Override Off/Normal)
Photocell Tracking Channel (1-16)	Special Modes: Manual On to Auto Off (Semi-Auto), Auto to (Timed) Override On, Manual to (Timed) Override On, Manual On to Full Auto, Predictive Off

INSTALLATION

- Mount to any junction box through a 1/2" knockout (note: chase nipple is long enough to accommodate mounting inside an adjacent box if necessary for local code requirements)
- Interconnect unit (via RJ-45 ports) with other nLight devices in lighting zone using CAT-5 cables
- Once power is received via CAT-5 connection, all devices in zone will automatically begin functioning together according to each device's defaults



SPECIFICATIONS

Electrical

Input Ratings	15-24VDC, 3mA, Class 2 (nLight network power)
Output Ratings	40VAC/DC, 1A
Relay Type	Latching
Standards/ Ratings	Energy Management Equipment, UL916 (E167435)

Mechanical

Dimensions	3.38"H x 2.53"W x 1.83"D (86mm x 64mm x 47mm) - does not include 1/2" chase nipple
Mounting	1/2" Knockout (7/8" hole)
Color	White
Connection Type	RJ-45 nLight Network Ports (2) Low-Voltage Leads

Environmental

Warrantied Operating Temperature	32°F to 140°F (0°C to 60°C)
Relative Humidity	Up to 90%, Non-Condensing
Standards/ Ratings	RoHS, Plenum UL2043

General

Standards/ Ratings	System Component to aid in compliance with Title 24, ASHRAE 90.1, IECC
---------------------------	--