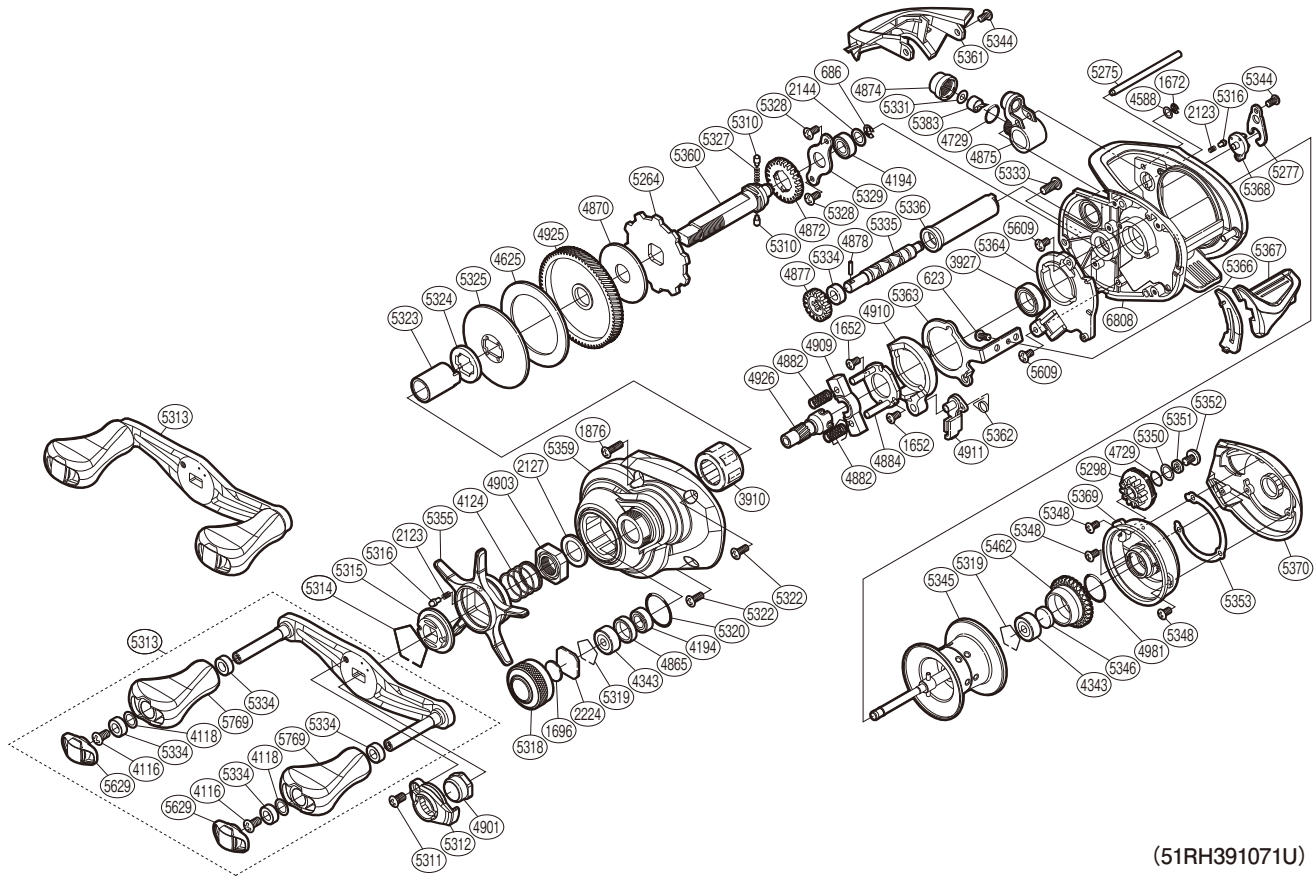


SHIMANO

CURADO

CU-71HG



(51RH391071U)

#	Part No.	Description	#	Part No.	Description	#	Part No.	Description
623	103C0	Screw	4909	1046W	Yoke	5336	10R10	Level Wind Guard
686	105NK	E Lock	4910	10K0P	Clutch Cam	5344	10MPD	Screw
1652	10LVE	Screw	4911	10MQM	Clutch Pawl	5345	10DP2	Spool Assembly
1672	105NC	E Lock	4925	10CME	Drive Gear	5346	10EX5	Spacer B
1696	10896	Cast Control Spacer	4926	10CRY	Pinion Gear	5348	10L1Q	Screw
1876	10LCV	Screw	4981	10LA8	O Ring	5350	10GFC	Washer
2123	10BT2	Click Spring	5264	10D73	Anti-reverse Ratchet	5351	10R3V	Br Dial Spacer
2127	10J1N	Star Drag Spacer	5275	10QSH	Stabilizer Bar	5352	10R1S	Screw
2144	10C47	Washer	5277	10BGR	Cam Lever Retainer	5353	10R0U	Washer
2224	1085F	Spool Tension Spacer	5298	10B1Y	Brake Dial	5355	10R0K	Star Drag
3910	10F5D	Roller Clutch Bearing	5310	10HJG	Idle Gear Pin	5359	10TX6	Left Side Plate
3927	10EX8	Ball Bearing	5311	10LFC	Screw	5360	10TMV	Drive Shaft
4116	103E9	Screw	5312	10Q5T	Handle Nut Plate	5361	10TPX	Level Wind Protector
4118	10HTT	Washer	5313	10DPC	Handle Assembly	5362	10TMC	Clutch Pawl Spring
4124	10A70	Star Drag Spring	5314	10KXW	Click Plate Retainer	5363	10TME	Clutch Plate
4194	105BP	Ball Bearing	5315	10R3K	Star Drag Click Plate	5364	10TMU	Clutch Guard
4343	105C3	Ball Bearing	5316	10MFC	Click Pin	5366	10TMF	Clutch Bar Guide
4588	10FJZ	Washer	5318	10QZZ	Cast Control Cap	5367	10TMD	Clutch Bar
4625	106XT	Drag Washer	5319	1054D	Bearing Retainer	5368	1019C	B Side Plate Cam Lever
4729	108WQ	O Ring	5320	10R22	O Ring	5369	10DLR	Brake Case
4865	10EYS	Bearing Spacer	5322	10LCG	Screw	5370	10196	Right Side Plate
4870	10CHF	Drag Washer	5323	10R05	Roller Clutch Inner Tube	5383	10BHQ	Line Guide Pawl
4872	10J47	Idle Gear	5324	10HJH	Key Washer Spacer	5462	101Z6	Brake Ring Gear
4874	10FJB	Pawl Cap	5325	10R0F	Key Washer	5609	10LCT	Screw
4875	10NVQ	Line Guide	5327	10JDY	Idle Gear Spring	5629	10FMJ	Handle Knob Seal
4877	10FNV	Idle Gear	5328	10LCQ	Screw	5769	1025N	Handle Knob Assembly
4878	10AEZ	Worm Shaft Pin	5329	109T1	Drive Shaft Retainer	6808	10030	Frame
4882	10487	Yoke Spring	5331	104TX	Spacer			
4884	10F3X	Clutch Cam Retainer	5333	10LFK	Screw			
4901	10FFD	Handle Nut	5334	10PXZ	Bushing			
4903	10A3U	Star Drag Nut	5335	10TPP	Worm Shaft			

Please note that the number of adjusting washers may not be the same as shown in the exploded views.
(Adjustment will vary with each individual product.)

(241029)_012