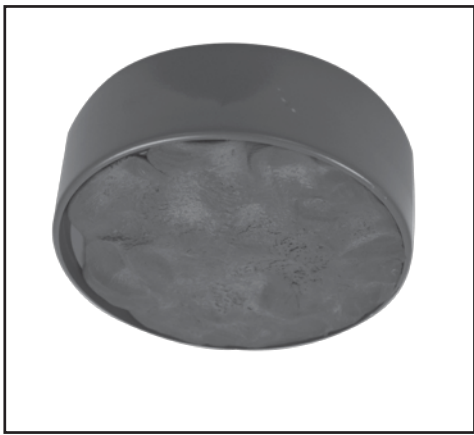


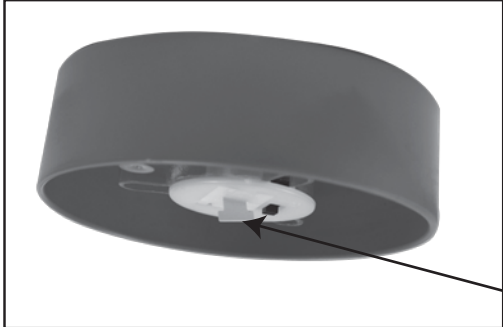
(Flip instructions open)



1. Cover base of globe with a thin layer of clay. You may need to mix together three of the four colors of clay to cover the entire base. Push the clay evenly to the edge of the base. This will help seal the globe so that water will not leak out.



Mix clay for new colors:
 Red + Yellow = Orange
 Yellow + Blue = Green
 Red + Yellow + Blue = Brown
 Blue + White = Light Blue
 White + Red + Yellow = Peach



Remove the white tab from the battery case in order to allow the light to turn on and off.



Refer to the box for ideas. Divide up the clay to make sticking each shrink shape into the base. Decorate the shallow side of the globe base. Do not decorate side with battery case.

Installing Batteries

Your light-up water globe comes with batteries. If they need replaced, this should only be done by an adult. They will need a Phillips jeweler's screwdriver and 3 LR44 (AG13, 357/303) button batteries (1.5V).

BATTERY WARNINGS

- Discard button batteries carefully.
- Do not allow children to play with button batteries. Keep button batteries out of your child's reach.
- To avoid accidental swallowing, never put button batteries in your mouth for any reason.
- If a button battery is ingested, immediately seek medical attention and call your local poison center.
- Be sure the battery compartment is tightly screwed closed.
- Do not mix old and new batteries.
- Do not mix alkaline, standard (carbon-zinc), or rechargeable (nickel-cadmium) batteries.



www.CreativityforKids.com

Make Your Own Light-Up Water Globe #6102000
 © Faber-Castell USA, Inc. • Cleveland, Ohio 44125 • www.fabercastell.com
 Designed in USA • Colored Pencils made in Taiwan
 All other components made in China • Conforms to ASTM D-4236
 Non-toxic Safe for Children

- Allow the shapes to cool on the tray for 10 minutes. When they are cool enough to touch, use a spatula to lift them off.
- Keep the tray in the oven for about 20 more seconds, and then ask an adult to remove them and place them on a heat proof surface.
- Bake for 1 to 3 minutes. Watch closely, baking times may vary depending on your oven. Watch as the plastic begins to curl, move about and then flatten out.
- Preheat the oven to 350° (175° C). Do not use the microwave. Cover your baking tray with aluminum foil. Place your shrink film on the tray with the colored side facing up. Be sure they are at least 3 inches from each other.
- Bake for 1 to 3 minutes. Watch closely, baking times may vary depending on your oven. Watch as the plastic begins to curl, move about and then flatten out.
- Now you are ready to bake the shrink film in a toaster oven or a conventional oven. Follow the directions below carefully. Let them dance, curl, flip, shrink and flatten. *If you remove them too soon, your shapes won't shrink!* Place them back in the oven until the shrinking process is complete.

Time to Shrink, Shrink, Shrink

Warning - Safety first. ADULT SUPERVISION is required when baking shrink film.



The shrink plastic has a smooth side and a rough side. Using the colored pencils included, color on the rough side only. If the pencils become dull, use the handy pencil sharpener as needed.



#6102000
 Ages 7 to 97

Important

This is a handmade item. In some cases, leakage may occur. Follow these tips to get the best result:

- 1) Follow instructions carefully.
- 2) Make sure your hands are clean and your work surface is clean.
- 3) Use an even, complete layer of clay on the bottom of your dome.
- 4) Do not use too much glitter.
- 5) Be sure to seal dome completely.
- 6) Hold bottom and top of dome when shaking (but do not squeeze).
- 7) Do not display on a surface that could become damaged if it gets wet.
- 8) Do not display in an area with excessive temperature fluctuation.
- 9) Prolonged exposure to water may change color of clay.

Shrink Shapes

The shrink plastic shapes are for you to color, shrink then add to your water globe. Trace photos onto the shrink plastic or draw fun characters and scenes then shrink them to fit into the water globe.

Color Guide for Colored Pencils:
 Color two colors in the same spot to create new colors.
 Yellow + Blue = Green
 Red + Blue = Purple
 Yellow + Red = Orange
 Any Color + White = Lighter Color
 White + Yellow + Red = Peach

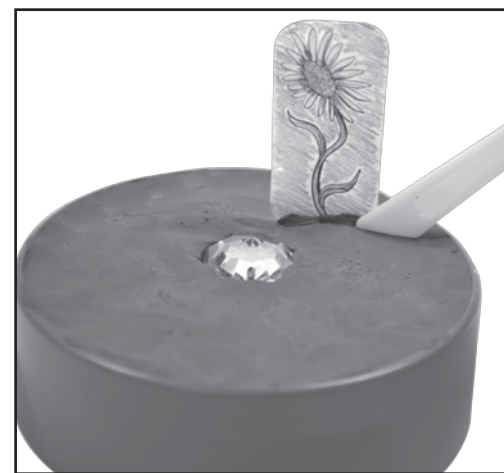
ADULT SUPERVISION is required when baking.

WARNING:
 FUNCTIONAL SHARP EDGE

2. Add the clear gemstone to the center of the base by removing some of the clay so it lays flat on the surface. The gemstone should be directly above the lights. Turn the light on to make sure it's placed properly. Squish the clay around the stone so it stays in place.



3. Decorate your scene by adding your shrink shapes to the clay. Be sure the clay is completely around the shape so there are no gaps. Use the tool to get in small spaces.

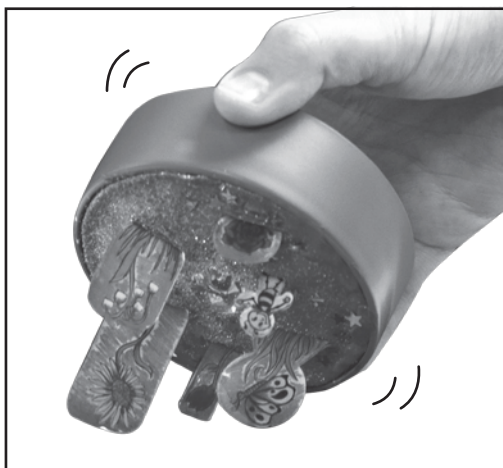


It is best to work over a sink and ask an adult for help as needed. Have some paper towels handy to clean up any drips.



4. You can add a little glitter to the base. Just be sure to keep glitter away from the edge of base.

Once all is in place, turn base over and give it a little shake over the sink to make sure everything is firmly secure.

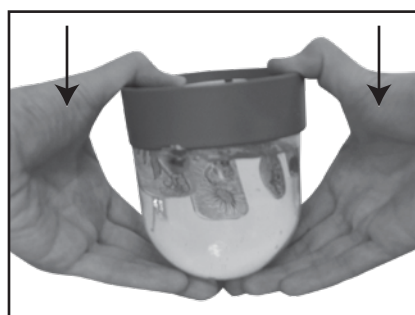


5. Flip the globe upside down and add the glitter, star sequins and small round shrink pieces.



6. Fill almost all of the way with water. Use a small stream of cool water to fill. Use bottled or distilled water for a crystal, clear globe.

7. Press base into the upside down globe. It should fit snugly. Ask an adult for help if needed. Press firmly on the sides of the base rather than the center of the base for best results.



For best results, leave over night before shaking to let the clay cure around the base and the shrink shapes.

8. Shake globe and watch it sparkle.



9. Turn on the light on the bottom of the base.



In case of accidental leakage, do not display your globe on wood or any surface that may be damaged by water. This globe also looks great without water.

Save extra materials for touch up or repair. Be sure to open water globe over a sink if touch up and repairs are needed.

