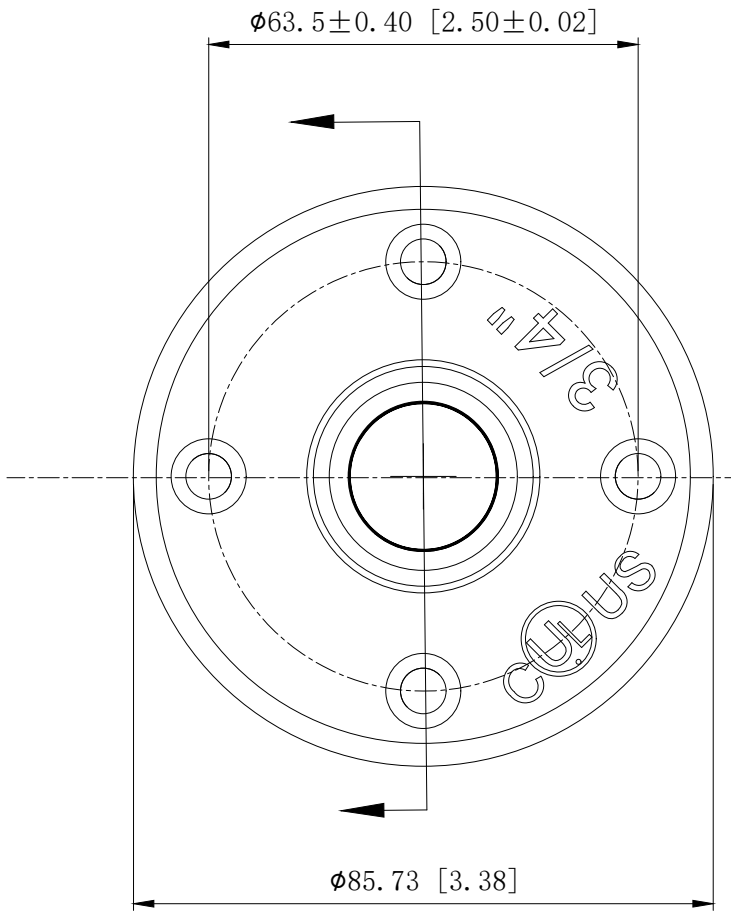
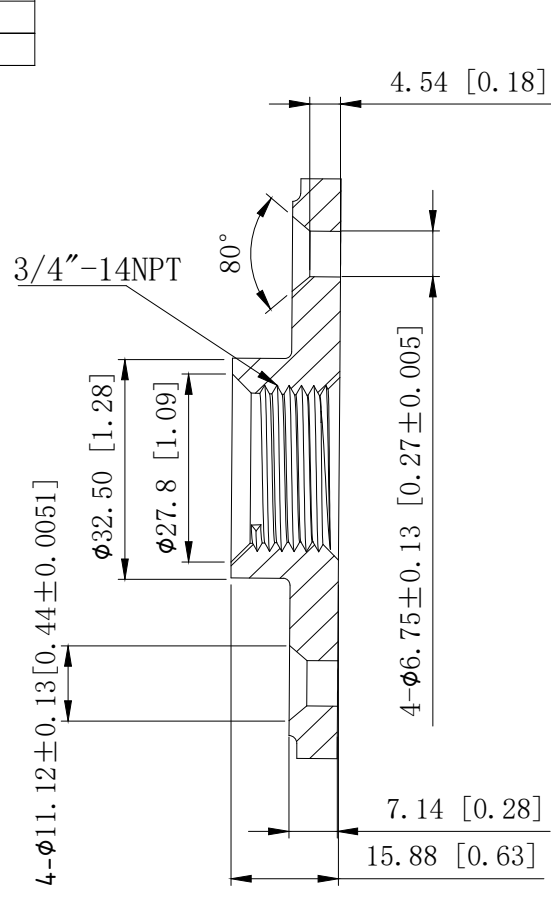


SIDES	BOTTOM
Material:Malleable, zinc plated	



This data sheet is for reference only .GARVIN INDUSTRIES reserves the right to make changes to the design without prior notice.

DESCRIPTION
TRADE REFERENCE TERMS

STANDARD PACKING	GARVIN INDUSTRIES		
25 PCS			
TITLE	FF75		REV B
SIZE A4	DWG NO.	DATA SHEET	