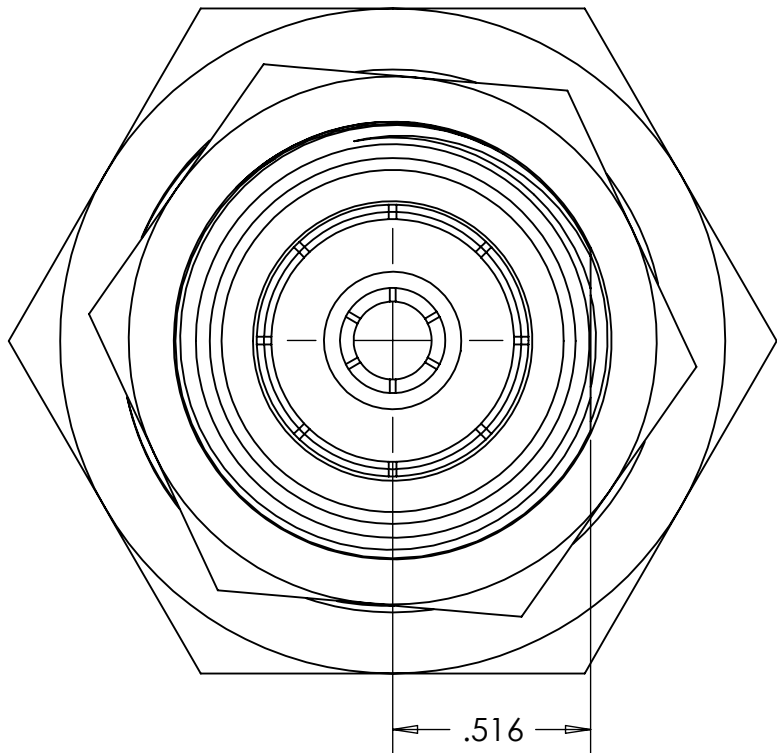
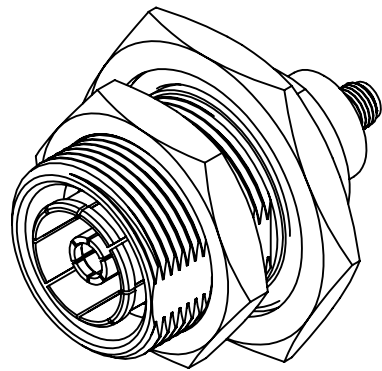
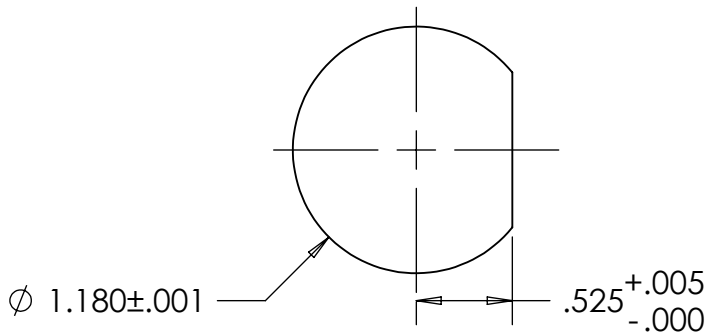


This document, including the design, configuration and mechanical features revealed herein are the sole, confidential and proprietary property of TRU Corporation. Reproduction or use thereof, in whole or part, is prohibited without the prior written consent of TRU Corporation.

REV.	DESCRIPTION	DATE	APPROVED
-	ORIGINAL ISSUE	10/09/12	TRC



RECOMMENDED MOUNTING DIMENSIONS



ENGINEERING DATA:

ELECTRICAL:
IMPEDANCE: 50 OHMS NOMINAL
FREQUENCY RANGE: DC-7.5 GHz

MECHANICAL:
7-16(f) INTERFACE PER DIN 47223
SMA(f) INTERFACE PER MIL-STD-348 FIG. 310-2

MATERIAL:
INSULATORS: TEFLON
CONTACTS: BERYLLIUM COPPER
OTHER METAL PARTS: BRASS
ORING: SILICONE RUBBER

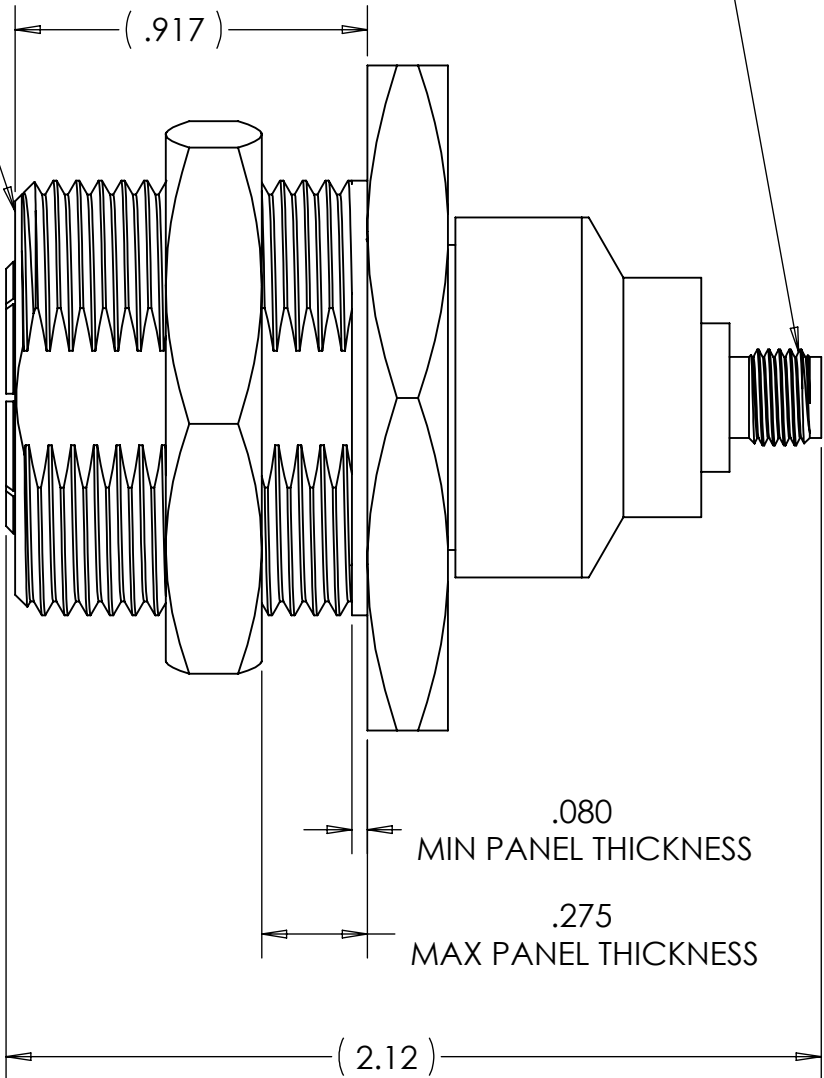
FINISH:
CONTACTS: GOLD PLATED
OTHER METAL PARTS: SILVER PLATED

ENVIRONMENTAL:
OPERATING TEMP: -65°C to 165°C

NOTES:
1. UNLESS OTHERWISE SPECIFIED; ALL
DIMENSIONS ARE REFERENCE ONLY.


7-16(FEMALE) INTERFACE

SMA(FEMALE) INTERFACE



MATERIAL	
DO NOT SCALE DRAWING	
UNLESS OTHERWISE SPECIFIED: DIMENSIONS ARE IN INCHES	
TOLERANCES: FRACTIONS: $\pm 1/64$.XX : $\pm .01$.XXX: $\pm .005$ ANGLES: $\pm 1/2^\circ$ MACHINED SURFACES: $\sqrt{63}$	
COMMENTS:	
surface area: sq inch	weight: lbs

DRAWN TRC	DATE 10/04/12
ENG APPR. TRC	DATE 10/09/12
MFG APPR. NRM	DATE 10/05/12
OTHER APPR. AM	DATE 10/09/12
THIRD ANGLE PROJECTION 	

		TRU Corporation 245 Lynnfield St, Peabody, MA 01960	
TITLE: CONNECTOR, COAXIAL, RF 7-16(f) to SMA(f) ADAPTER, BULKHEAD			
SIZE B	DWG. NO. TRU-12101	REV -	
CAGE CODE: 92180		SCALE: 2:1	SHEET 1 OF 1