



24V Nighthawk NexGen

Owner's Manual and Assembly Instructions

Model #: W502, W502AC, W502-F, W502AC-F, W502AC-OB,
W502AC-OB-F

Read and understand the entire manual before assembly and operation. The vehicle must be assembled by an adult who has read and understands the instructions.

Made in China.

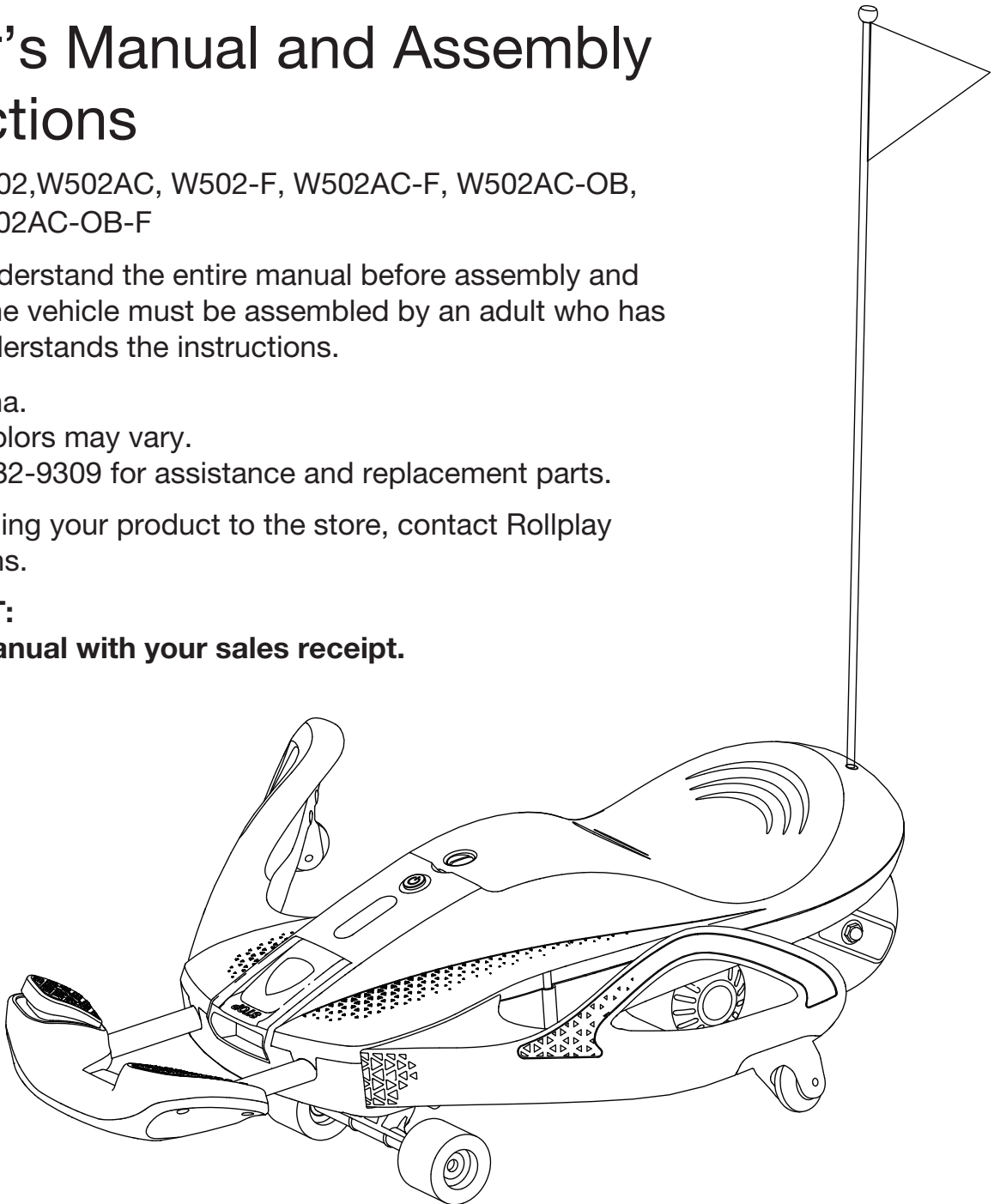
Styles and colors may vary.

Call 1-888-982-9309 for assistance and replacement parts.

Before returning your product to the store, contact Rollplay with questions.

IMPORTANT:

Save this manual with your sales receipt.



NOTE: You will need to connect the battery to the NexGen before using, see instructions on Page 9.

Introduction

Thank you for purchasing the Rollplay Nighthawk NexGen. We hope the rider enjoys it for miles to come. Please read this instruction guide carefully before assembling and operating the ride-on.

Please contact Rollplay Customer Service with any questions. Have your model number and serial number ready before calling.

Please have proof of purchase. Keep your sales receipt and register your product at www.rollplay.com.

Hours: 9 AM - 5 PM (CST), Monday - Friday

Phone: 1-888-982-9309

Email: customerservice@rollplay.com

Web: www.rollplay.com

For inquiries in French, please email only at customerservice@rollplay.com.

This one-year limited warranty covers the ride-on vehicle against defects in materials and workmanship to the original purchaser. **Proof of purchase receipt from a Rollplay certified reseller is required.**

Specifications:

BATTERY	24 V 2.9 AH
MOTOR	24 V
AGE	6 Years and Up
MAX WEIGHT	110 lb (50 kg)
FOLDING DIMENSION	28.3 x 11.4 x 9.3 in (72.0 x 29.0 x 23.5 cm)
OPENING SIZE	31.5 x 29.1 x 9.3 in (80.0 x 74.0 x 23.5 cm)
SPEED	Up to 6.5 mph (10.5 km/h)
CHARGE TIME	4-6 hours
RUN TIME	70-90 Minutes
CHARGER OUTPUT	DC 25.2 V

IMPORTANT!

YOU MUST CONNECT AND CHARGE THE BATTERY FOR 12 HOURS BEFORE FIRST USE!

Charge the battery after each use. Charge for 4-6 hours for every recharge after the initial charge.

Charge the battery at least once a month, even if the Nighthawk NexGen is not in use.

Failure to recharge the battery periodically may result in a battery that will not accept a charge.

BEFORE RETURNING YOUR PRODUCT TO THE STORE, CONTACT ROLLPLAY WITH QUESTIONS.

E-mail Customer Service if you need assistance or replacement parts. Please have your model number and serial number ready before calling. Keep your sales receipt and register your product at www.rollplay.com, as we will require proof of purchase.
customerservice@rollplay.com

Read this entire manual to ensure proper assembly and safe operation of the ride-on.

4 Table of Contents

Safety	5
Quick Start Guide	8
Connect the Battery	9
Charge the Battery	10
Flagpole Assembly	11
Folding Instructions	12
Operating Instructions	13
Maintenance	14
General Care	15
Parts	16
Troubleshooting Guide	17
FCC Information	18
Service and Repairs	19
Warranty	20
Product Registration	21



WARNING: SAFETY RIDING RULES

- The user must follow all safety rules and guidelines or serious injury or death may occur to the user.
- Always use common sense and safe practices when using the vehicle. The user must be at least 6 years old and weigh no more than 110 lb (50 kg). The recommended rider age is only an estimate and can be affected by the rider's size, weight or skills. Any rider unable to fit comfortably on the NexGen should not attempt to ride it. A parent's decision to allow his or her child to ride this product should be based on child's maturity, skill and ability to follow rules.
- This product contains small parts that are for adult assembly only. Keep small children away when assembling.
- Remove and dispose of all protective material and plastic bags before assembly.
- Riders must always wear a fitted helmet that complies with U.S. Consumer Product Safety Commission (CPSC) Standard 16 CFR 1203. Elbow pads and knee pads, a long-sleeved shirt, long pants, and gloves are recommended. Always wear athletic shoes (lace-up shoes with rubber soles), never ride barefoot or in sandals, and keep shoelaces tied and out of the way of the wheels, motor, and drive system.
- Come to a stop when approaching an obstruction, turn away, and use the vehicle elsewhere.
- Only sit on the seat on the vehicle.
- Do not allow more than one rider.
- Do not overload the vehicle. Do not remove the weight restriction decals.
- Do not pull the vehicle with another vehicle or similar device.
- Keep body parts, such as hands, legs and hair, and clothing away from moving parts. Moving parts can cause serious injury.
- Always wear shoes while using the vehicle.
- Do not operate near streets or motor vehicles.
- Do not operate near drop-offs such as steps, steep inclines, or hills. Operate on relatively level ground.
- Do not operate near water, swimming pools, or other fluids.
- Do not operate in dangerous weather conditions such as rain or snow.
- Do not operate near loose dirt, mud, sand, or fine gravel.
- Do not operate near flammable vapors (gasoline, paint thinner, acetone, etc.).
- Always use the vehicle in a safe, secure environment with adult supervision.
- The vehicle should be used with caution, as skill is required to avoid falls or collisions causing injury to the user and third parties.

6 Safety

- Do not touch the electric motor when in use as it can become very hot.
 - Do not activate the foot pedal throttle unless you are seated and in a safe, outdoor environment suitable for riding.
 - This product was manufactured for performance and durability, but it is not impervious to damage. Bumping into obstacles, jumping or other aggressive riding can overstress and damage any product, including the Nighthawk, and the rider assumes all risk associated with high-stress activity. Avoid bumping into other objects and obstacles, as this may damage the product.
 - Maintain a secure hold on handle at all times.
- PREVENT INJURIES AND DEATHS:**
NEVER LEAVE CHILD UNATTENDED. ALWAYS keep child in view when child is in vehicle. Direct adult supervision is **REQUIRED**.
NEVER use in roadways, near motor vehicles, on or near steep inclines or steps, swimming pools or other bodies of water.
ALWAYS wear shoes, a helmet and protective gear.
ALWAYS sit on the seat. Do NOT lean back.
RISK OF FIRE. Do not bypass.
- Before using the vehicle, the rider must understand the vehicle controls and safety issues.
 - It is the responsibility of the adult to educate the child and to determine if the child is capable of understanding the vehicle controls.
 - An adult must ALWAYS directly supervise the use of this vehicle.
 - NEVER leave a child unsupervised in the vehicle.
 - Store indoors when not in use. Store in a dry environment.
 - Do not charge at or below 32°F (0°C). Do not store in freezing or below freezing temperatures. Do not store in temperatures above 86° F (30° C).
 - The included lithium-ion battery must be recycled or disposed of in an environmentally safe manner. Do not dispose of a battery pack in a fire; the battery pack may explode. Do not dispose of the battery pack in your household trash. The incineration, land filling or mixing of batteries with household trash is prohibited by law in most areas. Return exhausted batteries to a federal or state approved lithium-ion battery recycling facility.
 - Tampering with or modifying the electric circuit system may cause shock, fire or explosion and it could permanently damage the system. Keep the battery/charger housing and all electronic components closed to prevent exposed wiring, which may cause electric shock.
 - Battery, charger, electric wire, plug, enclosure and other parts should be periodically checked for damage. If damage is found discontinue use until the product is repaired.



WARNING: BATTERY SAFETY

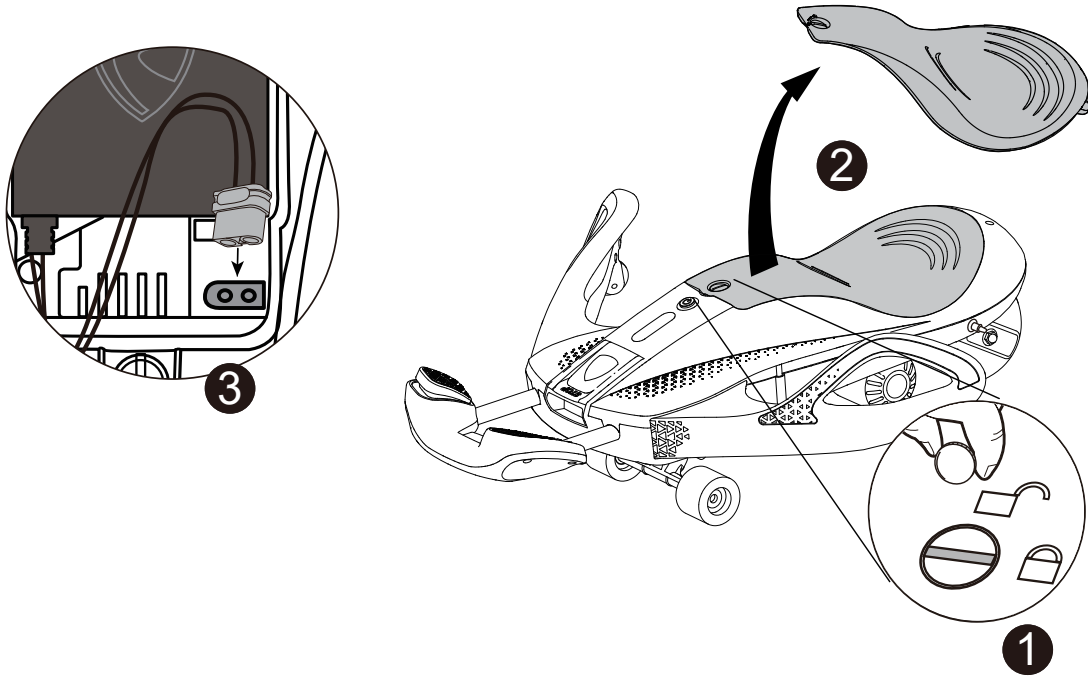
IMPORTANT: Before using the vehicle for the first time, the battery must be charged for a full 12 hours. To prevent any battery leakage, heat or fire, please pay attention to the following precautions:

- Do not immerse the battery in water.
- Do not use the battery next to high temperature sources, such as a fire, a heater, etc.
- Only use the included charger for lithium battery charging.
- Do not reverse the battery.
- Do not connect the battery directly to the power outlet.
- Do not throw the battery into a fire or heater.
- Do not directly connect the terminals of the battery with metal.
- Do not transport or store the battery together with metals such as hairpins, necklaces, etc.
- Do not tap, throw or step on the battery.
- Do not directly solder the battery cells, or use sharp tools to pierce the battery pack or battery cells.
- Do not use or leave the battery at high temperatures (in direct sunlight or in a hot car), as this may cause the battery to overheat, cause a fire or malfunction, and result in a shorter battery life.
- Do not use in places with strong static electricity and strong magnets, otherwise it will easily damage the safety protection device of the battery pack.
- If the battery leaks and electrolytes enter the eyes, do not rub your eyes. Rinse your eyes with clean water, and go to a hospital for treatment immediately.
- Remove and stop using the battery immediately if it emits a foul odor, overheats, if there is discoloration, if it becomes deformed or if there is any abnormality during charging.
- If the terminals of the battery are dirty, use a dry cloth to clean them, to avoid poor connection.
- Discarded batteries should be covered with insulating paper to prevent fire and smoke.
- The battery should be stored at room temperature, with 40%~60% power. It is recommended to charge the battery at least once a month, even when the vehicle is not in use. Failure to recharge the battery periodically may result in a battery that will not accept a charge. If the product is stored without use for more than a year, it is recommended to charge and to discharge the battery fully once a year to maintain the performance of the battery.

8 Quick Start Guide

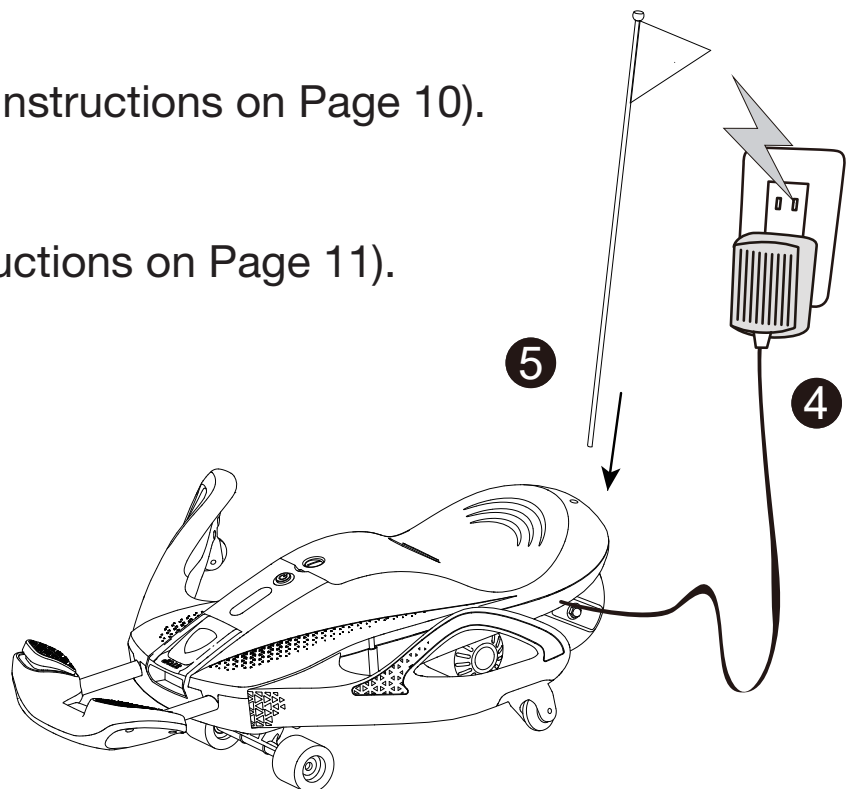
BEFORE FIRST USE, PLEASE COMPLETE THE FOLLOWING STEPS:

1. Connect the battery (instructions on Page 9).



2. Charge the battery (instructions on Page 10).

3. Insert flagpole (instructions on Page 11).



9 Connect the Battery

BEFORE THE INITIAL CHARGE, YOU MUST CONNECT THE BATTERY UNDERNEATH THE SEAT.

The product ships with the battery disconnected, so please follow the steps below to connect the battery to the Nighthawk NexGen prior to charging for the first time. The Nighthawk NexGen will not charge or work if you skip this step.

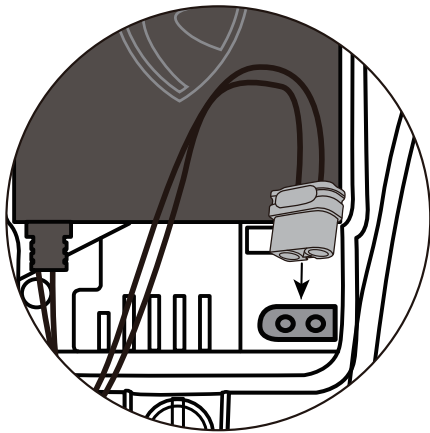


Fig. 2

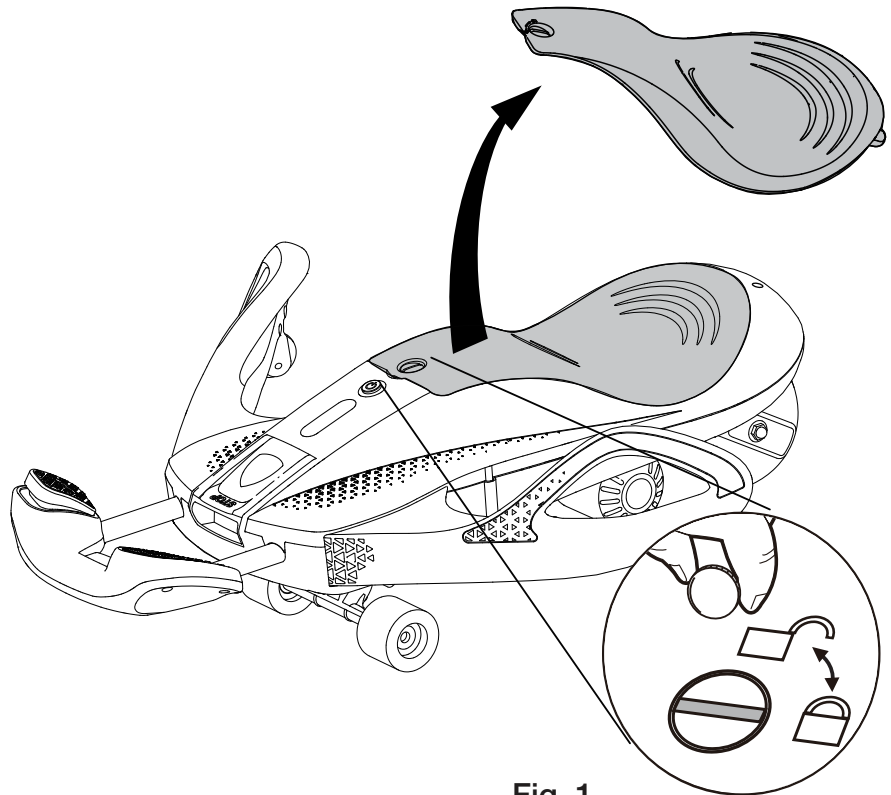


Fig. 1

1. Remove the Seat:

Rotate the seat lock (Fig.1) to the unlock position and lift up the seat using the indentation at the front of the seat.

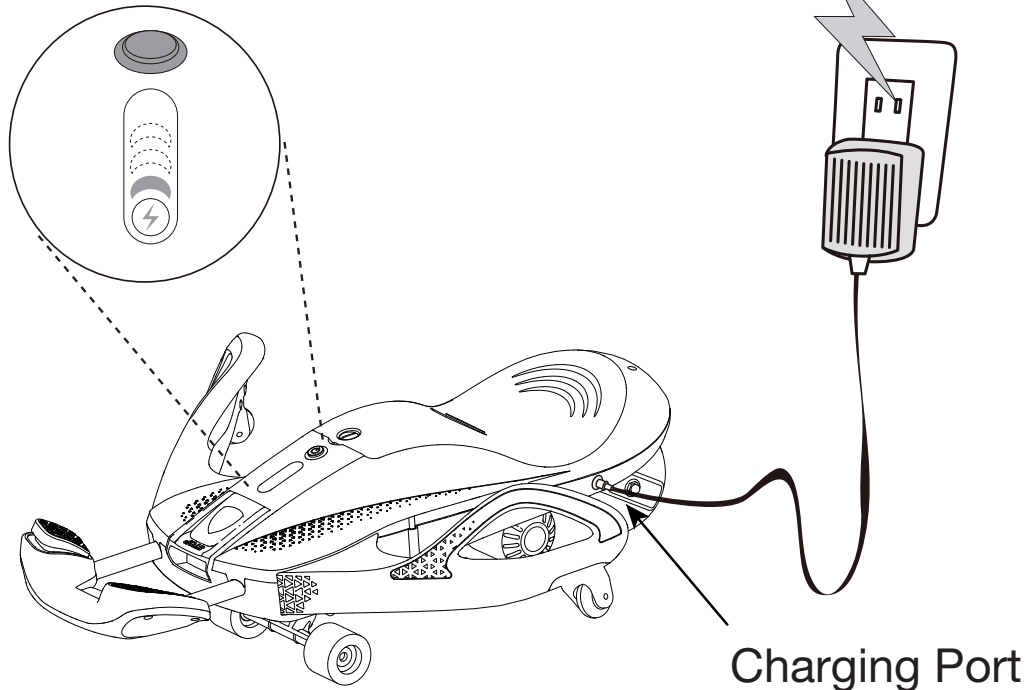
2. Connect the Battery:

Underneath the seat, locate the battery and the matching yellow connectors. Plug the battery into the yellow connector located in the compartment beneath the seat (Fig. 2).

3. Install the Seat:

After connecting the battery, slide the seat into place on the vehicle body. Use a coin or flathead screwdriver to turn the lock to the locked position.

Battery Life Indicator



Battery Life Indicator:

The Battery Life Indicator, located underneath the Power Button, displays the power level.

- When the unit is fully charged, all lights on the Battery Life Indicator will illuminate when the NexGen is powered on.
- The unit needs to be charged when only one light is illuminated on the Battery Life Indicator.

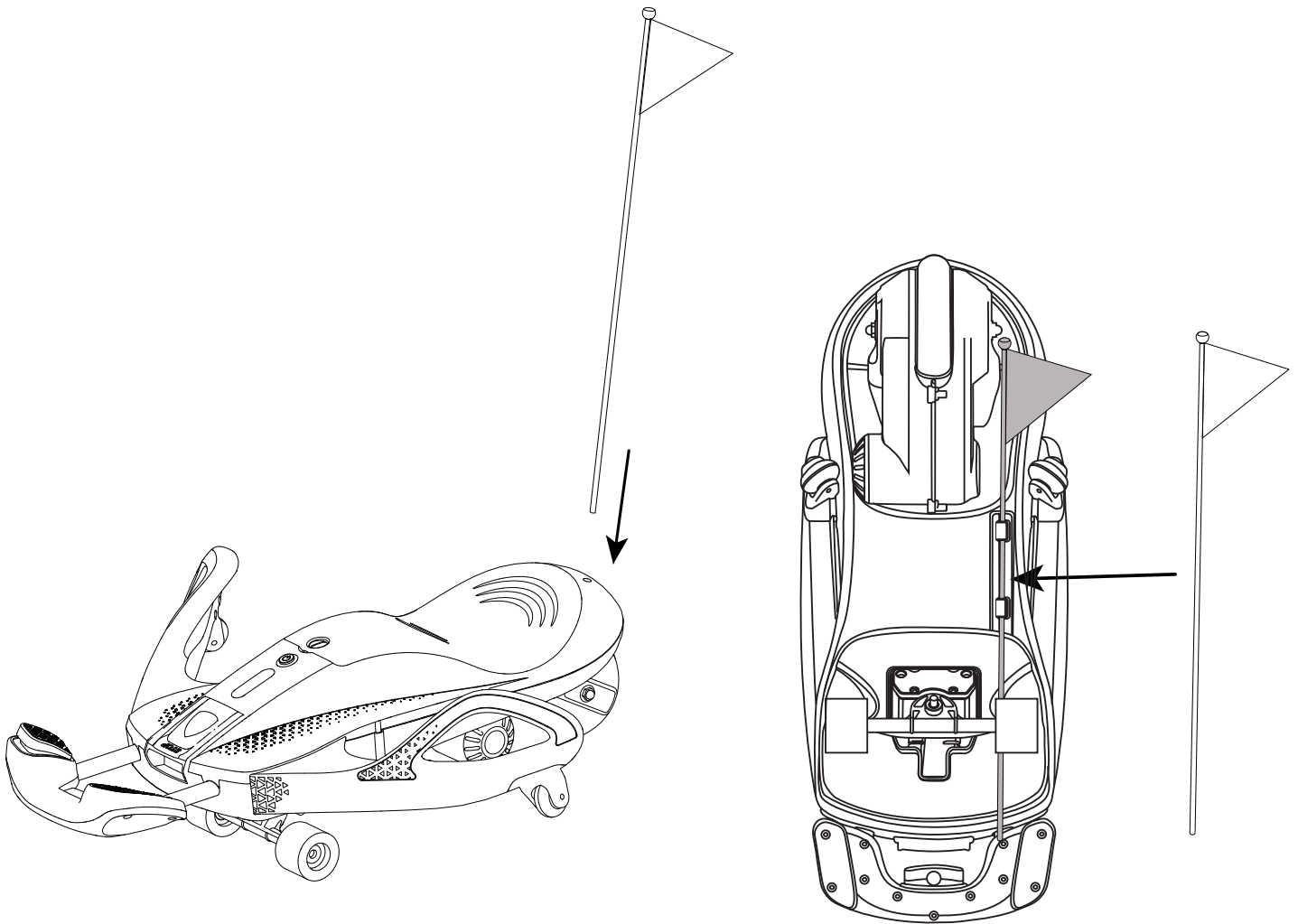
Charging the Battery:

1. Before charging, make sure the unit is turned off.
2. Insert the charger into the charging port located on the side of the Nighthawk NexGen, near the seat.
3. Plug the charger into an outlet. It is recommended to charge for 12 hours for the first charge, then 4-6 hours after the initial charge.

NOTE: Charge the battery after each use. Charge the battery at least once a month, even when the vehicle is not in use. Failure to recharge the battery periodically may result in a battery that will not accept a charge.



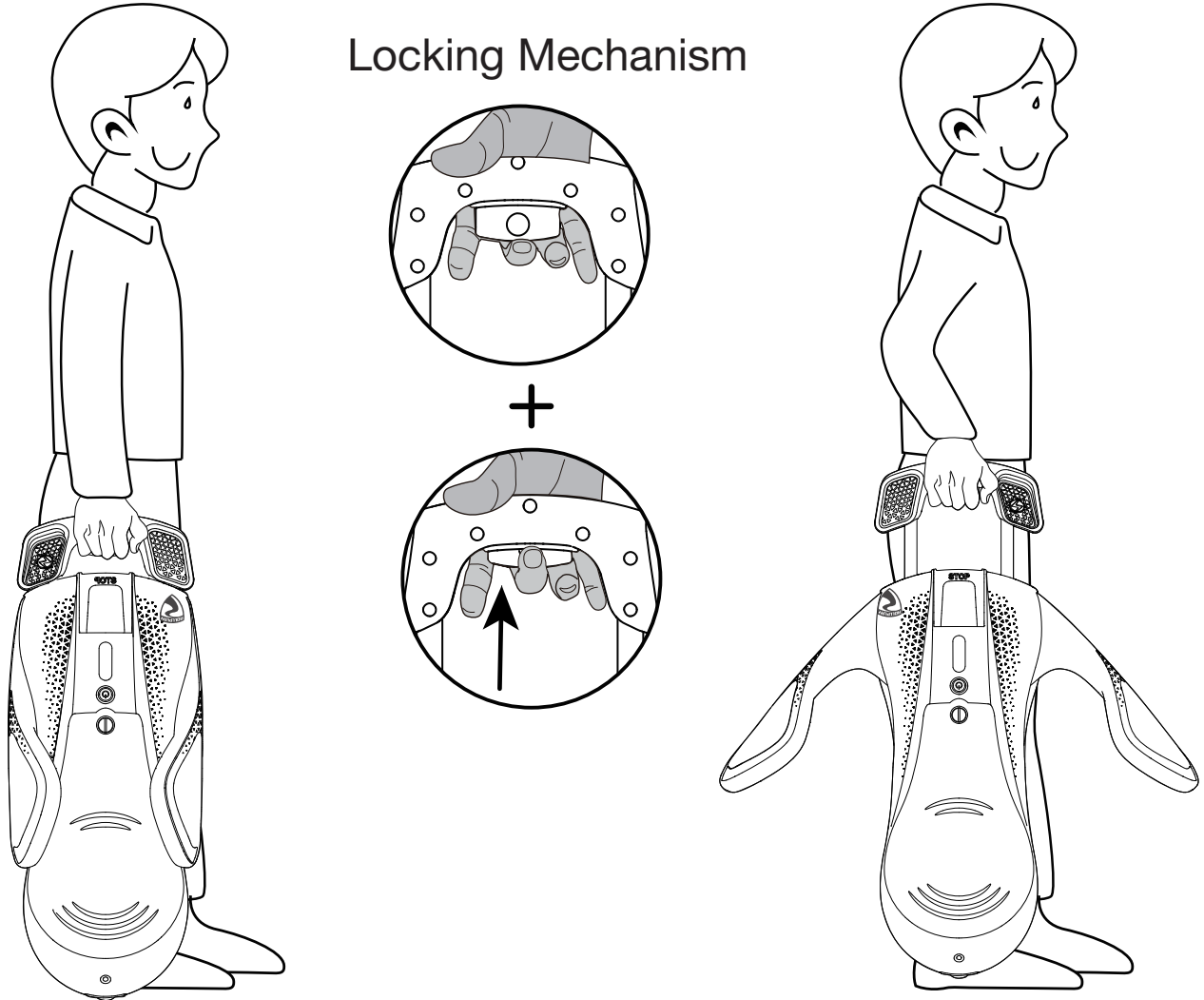
Do not use the vehicle while it is plugged in.



Before riding, insert the flagpole into the hole at the back of the vehicle.

For easy transport, there are clips to hold or store the flag underneath the NexGen body when the unit is folded.

12 Folding Instructions



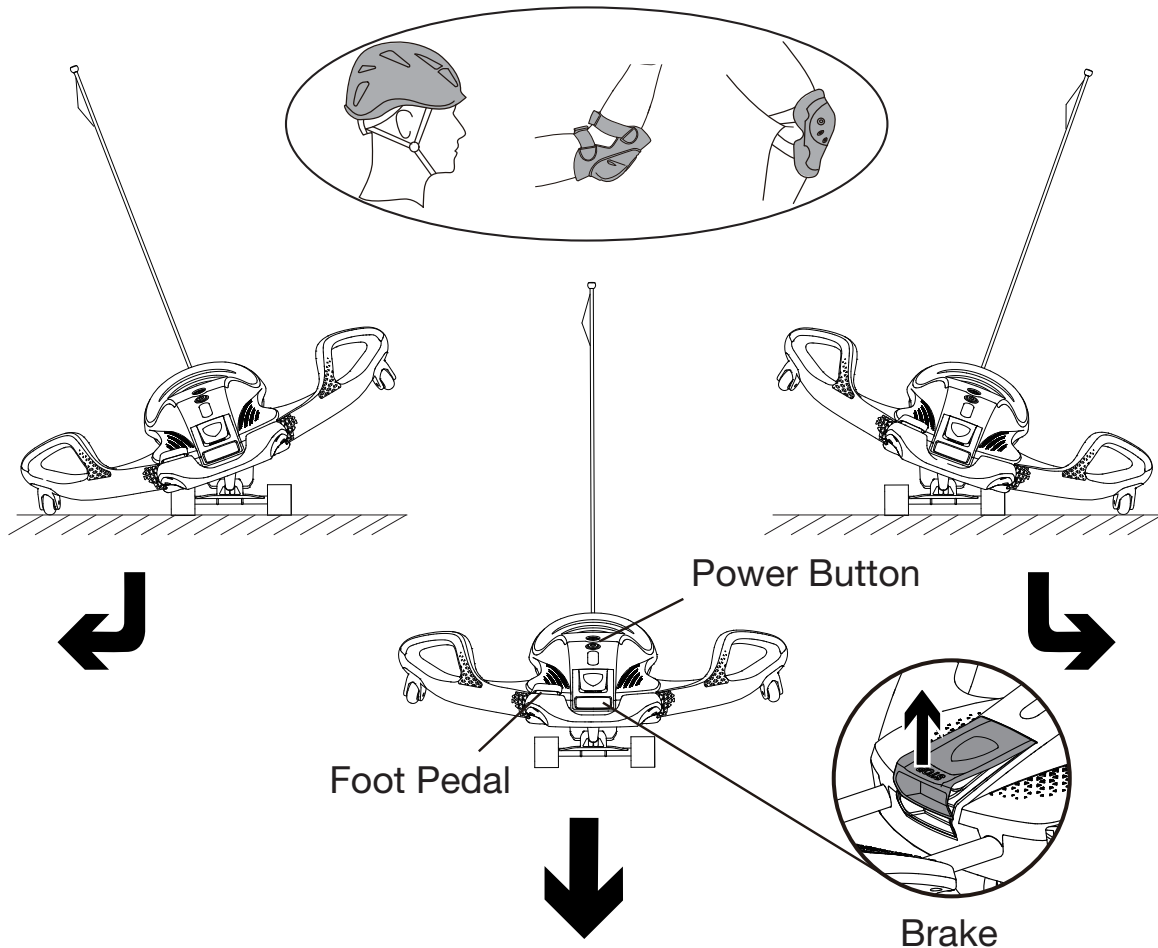
Unfolding the Nighthawk NexGen:

1. Lift the Nighthawk NexGen up by the foot rest.
2. Hold in the red circle locking button on the handle while squeezing the red trigger into the handle and pull the foot rest up to open.

Folding the Nighthawk NexGen:

1. Remove the flagpole before folding the Nighthawk NexGen.
2. Hold in the red circle locking button while squeezing the red trigger into the foot rest.
3. While holding both buttons, press down on the foot rest until the unit is closed.

 **Note:** Wear protective equipment including a helmet and padding to avoid possible injury.



Getting Started:

1. Before riding the vehicle, ensure the battery is connected and the seat is securely locked into place. Make sure the rider is seated and leaning forward.
2. Press the Power Button to turn on the vehicle. The light will turn on if the vehicle is charged.

To Go: Grip the handlebars tightly and lean forward while riding. Press the Foot Pedal down slowly at first to go forward. The motor will stop when the Foot Pedal is released.

To Brake: Pull up on the red hand Brake to come to a complete stop.

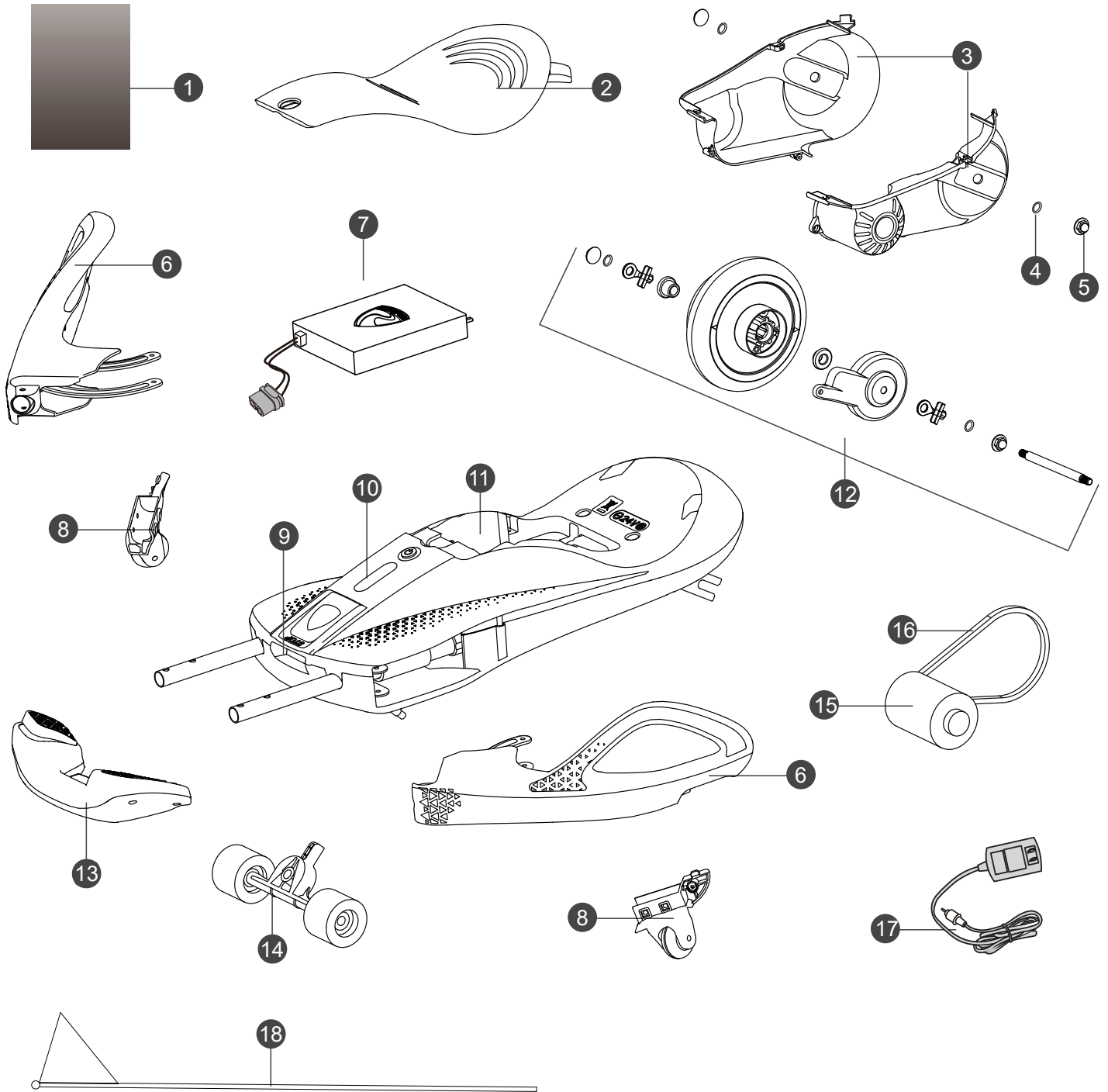
To Turn or Spin: While in motion, lean to the desired direction until the support wheel touches the ground. Note: Do not lean back while riding.

Important Battery and Charger Information

- Only an adult who has read and understood the safety warnings may handle and operate the battery and battery charger. Keep away from children.
- Charge the battery for 12 hours before using the vehicle for the first time.
- Recharge the battery immediately after each use. Charge for at least 4-6 hours, but no more than 12 hours.
- Charge the battery at least once a month, even if the vehicle is not used or stored.
- Never leave the battery in a discharged condition.
- Connect the terminal of the battery and charger, then plug the charger into a 120 V AC outlet.
- It is normal for the charger to heat slightly. If the charger rises above 65°C / 149°F, disconnect the charger and call Customer Service for assistance.
- Keep the charger away from water or excessive moisture to prevent short-circuiting.
- Only use the charger specified with the original item. **Do not charge the battery with any other charger.**
- Do not attempt to recharge non-rechargeable batteries with the original charger.
- **Do not replace the battery with any other battery, or the warranty will be voided.**
- Remove damaged batteries from the vehicle immediately. Recycle or dispose of the used batteries responsibly.
- Do not short circuit the supply terminals.
- Do not leave the battery connected in the vehicle for extended periods of time when the vehicle is not being used. Disconnect the battery connector from the engine connector before storing.
- The vehicle is equipped with a thermal fuse to protect the electric circuit. If the vehicle cuts out, turn the vehicle off and on to reset.

- Regularly inspect all vehicle parts to ensure they are in good working condition.
- Regularly inspect the charger, cord, plug and other related parts for damage.
- Remove any damaged parts and immediately contact Customer Service for replacement parts. See service information on Page 19.
- DO NOT operate the vehicle if there are any damaged parts.
- Carefully clean the vehicle with a damp cloth and mild soap. Do not get water in or near any electrical parts. Do not wash the vehicle with a hose.
- Store the vehicle indoors or use a tarp to cover it. Keep away from stoves, heaters and other sources of heat.

16 Parts



1. Manual

2. Seat

3. Gearbox Cover

4. Washer

5. Nut

6. Handlebars (x2)

7. Battery

8. Side Wheel (x2)

9. Hand Brake

10. Battery Life Indicator

11. Vehicle Body

12. Rear Wheel

13. Foot Pedal

14. Front Truck

15. Gearbox

16. Chain

17. Charger

18. Flagpole

Troubleshooting Guide 17

Completely read through the manual and troubleshooting guide before contacting Customer Service.

Problem	Potential Cause	Solution
Vehicle does not run	Battery is low	Recharge the battery
	Battery terminal connector loose or detached	Reconnect battery connector
	Battery not charged	Recharge Battery
	Electrical Components Broken	Call Customer Service for troubleshooting
	Battery is dead	Call Customer Service for replacement battery
	Drive chain fell off	Reinstall the chain
	Motor is damaged	Call Customer Service
Vehicle only runs for a short time	Undercharged battery	Ensure a secure connection when the battery is recharging. Recharge for at least 4-6 hours.
	Overcharged battery	Never charge the battery for more than 12 hours
	Battery is old	Replace battery
Vehicle runs slowly	Battery is not fully charged	Ensure a secure connection when the battery is recharging
	Battery is old	Call Customer Service to order replacement battery
	Too much weight on vehicle	Reduce weight on vehicle (Max. Weight: 50 kg / 110 lb)
	Harsh conditions	Operate the vehicle on level ground and safe surfaces
	Caster Wheel is Worn	Replace caster wheel
Motor or gearbox making grinding noise	Motor or gear damage	Call Customer Service
Vehicle unable to turn	Support wheel screw is loose	Tighten the screw
	Support wheel is worn	Replace caster wheel

18 **FCC Information**

This device complies with part 15 of the FCC Rules. Operation is subject to the following two conditions: (1) this device may not cause harmful interference, and (2) this device must accept any interference received, including interference that may cause undesired operation.

This equipment has been tested and found to comply with the limits for a Class B digital device, pursuant to Part 15 of the FCC Rules. These limits are designed to provide reasonable protection against harmful interference in a residential installation.

This equipment generates, uses and can radiate radio frequency energy and, if not installed and used in accordance with the instructions, may cause harmful interference to radio communications. However, there is no guarantee that interference will not occur in a particular installation. If this equipment does cause harmful interference to radio or television reception, which can be determined by turning the equipment off and on, the user is encouraged to try to correct the interference by one or more of the following measures:

- Reorient or relocate the receiving antenna.
- Increase the distance between the equipment and the receiver.
- Consult dealer or an experienced radio/TV technician for help.
- Connect the equipment into an outlet on a circuit different from that to which the receiver is connected.
- Check the state or local requirements for the product before using the product.

Caution: changes or modifications not expressly approved by the party responsible for compliance could void the user's authority to operate the equipment.

Before returning your vehicle to the store, contact Rollplay with questions.

If your product requires service, repairs or replacement parts, please contact Rollplay Customer Service.

Hours: 9 AM - 5 PM (CST), Monday - Friday

Phone: 1-888-982-9309

Email: customerservice@rollplay.com

Web: www.rollplay.com

For a list of available replacement parts, please visit www.rollplay.com

WE WILL REQUIRE PROOF OF PURCHASE. Please save your sales receipt and register your product at www.rollplay.com.

Rollplay 24-Volt Limited Warranty

- One-year limited warranty from the date of purchase with proof of purchase from **a Rollplay certified retailer.**
- Six month limited warranty on the 24-Volt battery with proof of purchase from a **Rollplay certified retailer.**
- Rollplay ensures the original 24-Volt battery is warranted for 6 months from initial purchase of the vehicle from a certified retailer. Proof of purchase receipt required.
- This warranty covers normal use and does not cover the Rollplay vehicle or battery if deemed damaged by unreasonable use, modification, neglect, accident, abuse, misuse, improper service or other causes not arising out of defects in materials or workmanship. Evidence of any attempt at consumer repair will void this warranty.
- This warranty does not cover, and is not intended to exclude any liability on the part of Rollplay, whether under this warranty or implied by law for any indirect or consequential damages for breach of warranty. Some states may not allow the exclusion or limitation, so this limitation may not apply to you.

Should you need service or assistance with your vehicle during the warranty period:

- Please do not return vehicle to the store.
- Consult the troubleshooting guide in this manual and online at www.rollplay.com
- or call Rollplay Customer Service at 1-888-982-9309.

Note: This warranty gives you specific legal rights. You may also have other rights that may vary from state to state.

Please save your original sales receipt.

22 Product Registration

Fill out the form below and mail it to:

Rollplay Products
1131 W Blackhawk St.
Second Floor
Chicago, IL 60642

OR fill out the form online at **www.rollplay.com**

We will use the information provided only for your warranty. We will not sell, rent or share your personal information.

Product Registration

First Name: _____ Last Name: _____ Title: _____

Address: _____

City: _____ State: _____ Zip Code: _____

Email: _____ Phone: _____

Date of Purchase: _____

The following product information is on the cover of the owner's manual.

Product Name: _____ Model Number: _____

Serial Number: _____ Retailer Place of Purchase: _____

