

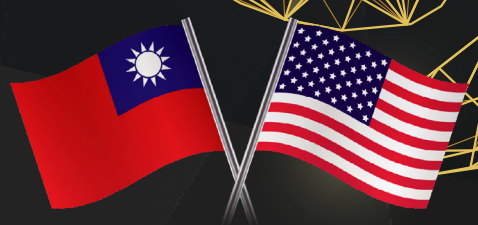


Your Trusted CCTV Manufacturer



V1 SERIES AI CAMERA BROCHURE

NDAA TAA COMPLIANT



AI Cameras at high price points?
LILIN has affordable AI cameras for every budget.

LILIN AI Camera V1 Series comes with built-in AI functions to perform AI-based image recognition tasks at the front-end, such as people and vehicle detection, prohibited zones, etc. It also triggers various events to connect to peripheral devices via the camera's own digital output or HTTP Post.

The V1 camera plays an entry-level role for AI monitoring, helping you quickly deploy and implement basic applications without incurring high costs.



V1R 5MP H.265 Camera (Fixed Lens)



Model	V1R9452E2	V1R4452E2	V1R6052E2
Resolution	5MP	5MP	5MP
Focal length	2.8mm	2.8mm	2.8mm
Aperture	F2.2	F2.2	F2.2
Iris Control	Fixed	Fixed	Fixed
Angle of View (HxVxD)	108.9 / 59.6 / 130.4	108.9 / 59.6 / 130.4	108.9 / 59.6 / 130.4
Pick Up Element	1/2.7" CMOS image sensor	1/2.7" CMOS image sensor	1/2.7" CMOS image sensor
Effective Pixels	2880 (H) × 1620(V) = 4,665,600 (Pixels)	2880 (H) × 1620(V) = 4,665,600 (Pixels)	2880 (H) × 1620(V) = 4,665,600 (Pixels)
Scanning System	Progressive Scan	Progressive Scan	Progressive Scan
Infrared Cut Filter	Auto / Day (Color) / Night (Mono) / Schedule		
Min. Illumination	Color: 0.16 Lux at F2.2 ; B/W: 0.02 Lux at F2.2 ; 0 Lux with IR LED ON		
White Balance	Auto / Manual	Auto / Manual	Auto / Manual
Electrical Shutter	1/30(1/25)s – 1/30000s	1/30(1/25)s – 1/30000s	1/30(1/25)s – 1/30000s
Sense Up	Off / x2 / x4 / x8 / x16	Off / x2 / x4 / x8 / x16	Off / x2 / x4 / x8 / x16
Sense Up+	Yes	Yes	Yes
Auto Gain Control	48 dB Variable Gain	48 dB Variable Gain	48 dB Variable Gain
EV (Exposure Value)	Adjustable	Adjustable	Adjustable
S/N Ratio	More than 50dB (AGC off)	More than 50dB (AGC off)	More than 50dB (AGC off)
3D Noise Reduction	Off / 1 – 32 Selectable	Off / 1 – 32 Selectable	Off / 1 – 32 Selectable
2D WDR	Off / Auto / x2 / x3 / x4	Off / Auto / x2 / x3 / x4	Off / Auto / x2 / x3 / x4
High Dynamic Range	Up to 120dB (by HDR mode, 2 shutter line interleave)	Up to 120dB (by HDR mode, 2 shutter line interleave)	Up to 120dB (by HDR mode, 2 shutter line interleave)
Privacy Masking	Off / On (4 zones)	Off / On (4 zones)	Off / On (4 zones)
Image Effects	Brightness, Contrast, Hue, Saturation, Sharpness, Mirror, Flip, Rotation, Defog	Brightness, Contrast, Hue, Saturation, Sharpness, Mirror, Flip, Rotation, Defog	Brightness, Contrast, Hue, Saturation, Sharpness, Mirror, Flip, Rotation, Defog
Auto Focus	-	-	-
Infrared LED	850nm	850nm	850nm
Smart IR	35M	30M	30M
IP Rating	IP67	IP67	IP66
Vandal Resistant Rating	IK10	IK10	IK10
CE Certification	Yes, EMI Class A	Yes, EMI Class A	Yes, EMI Class A
FCC Certification	Yes, EMI Class A	Yes, EMI Class A	Yes, EMI Class A
UKCA Certification	Yes, EMI Class A	Yes, EMI Class A	Yes, EMI Class A
Starting Temperature	-10°C – +50°C (-14°F – 122°F)	-10°C – +50°C (-14°F – 122°F)	-10°C – +50°C (-14°F – 122°F)
Operating Temperature	-30°C – +50°C (-22°F – 122°F)	-30°C – +50°C (-22°F – 122°F)	-30°C – +50°C (-22°F – 122°F)
Storage Temperature	-25°C – +60°C (-13°F – 140°F)	-25°C – +60°C (-13°F – 140°F)	-25°C – +60°C (-13°F – 140°F)
Humidity	0% – 90% RH	0% – 90% RH	0% – 90% RH
Dimension	70(W) x 70(H) x 193(D) mm	Ø111 x 87(H) mm	Ø133 x 101(H) mm
Weight	370g	370g	530g
Power Supply	PoE (IEEE 802.3af compliant)	PoE (IEEE 802.3af compliant)	PoE (IEEE 802.3af compliant)
Power Consumption	POE, 6.9W	POE, 5.7W	POE, 7.3W
Video Compression	H.265/HEVC main profile, H.264 main and high profile , Motion JPEG		
Resolution	5MP(2880 x 1616), 4MP(2304 x 1728), 3.1MP(2048 x 1536), 3MP(2304 x 1296), 2MP(1920 x 1080), 1.3MP(1280 x 960), 1MP(1280 x 720), D1(720 x 480, 720 x 576), VGA(640 x 480), CIF(352 x 240)		
Video Streaming	RTP/HTTP, RTP/TCP, RTP/UDP, Multicast streams in H.265 and H.264 and Motion JPEG, configurable frame rate and bandwidth		
Number of streams	3	3	3
Video Bitrate	128Kbps – 12Mbps; Frame rate and bit rate controllable on-the-fly; VBR / CBR / GOP supported, Fixed bitrate		
Encryption	Base64 HTTP encryption, HTTPS encryption	Base64 HTTP encryption, HTTPS encryption	Base64 HTTP encryption, HTTPS encryption
Authentication	Digest HTTP authentication, RTSP authentication, DDNS via HTTPS		
Address Filter	Yes	Yes	Yes
Access	Multiple user access levels with password protection		
Artificial Intelligence	People / Car / Detection Zone / Detection Line		
Event Triggers	Motion / Tamper / Network lost detection / Global Counter / Virtual Input / Metadata		
Event actions	FTP / SMTP / HTTP post / SD card / SAMBA / Push Service / Global Counter / Virtual Input		
OSD	Position configurable text overlay for date, time, camera ID, event status		
Log	Event & operation log & IVS event log	Event & operation log & IVS event log	Event & operation log & IVS event log
Schedule	Support holiday list	Support holiday list	Support holiday list
Mobile Application	Integrated to LILIN mobile app with iPhone, iPad, Android support		
Video Management	ONVIF Profile S / ONVIF Profile T / ONVIF Profile G / IVS events, LILIN Navigator Enterprise 5.0 support, Third party VMS through LILIN HTTP API		

V1R 5MP H.265 Camera (Varifocal Lens)



Model	V1R9552X3	V1R4552X3	V1R6052X3
Resolution	5MP	5MP	5MP
Focal length	2.8~12mm	2.8~12mm	2.8~12mm
Aperture	F1.6 ~ F3.1	F1.6 ~ F3.1	F1.6 ~ F3.1
Iris Control	Fixed	Fixed	Fixed
Angle of View (HxVxD)	107.6° (W) – 38.1° (T) / 56.5° (W) – 21.4° (T) / 129.1° (W) – 43.5° (T)	107.6° (W) – 38.1° (T) / 56.5° (W) – 21.4° (T) / 129.1° (W) – 43.5° (T)	107.6° (W) – 38.1° (T) / 56.5° (W) – 21.4° (T) / 129.1° (W) – 43.5° (T)
Pick Up Element	1/2.7" CMOS image sensor	1/2.7" CMOS image sensor	1/2.7" CMOS image sensor
Effective Pixels	2880 (H) × 1620(V) = 4,665,600 (Pixels)	2880 (H) × 1620(V) = 4,665,600 (Pixels)	2880 (H) × 1620(V) = 4,665,600 (Pixels)
Scanning System	Progressive Scan	Progressive Scan	Progressive Scan
Infrared Cut Filter	Auto / Day (Color) / Night (Mono) / Schedule		
Min. Illumination	Color: 0.1 Lux at F1.6 ; B/W: 0.01 Lux at F1.6 ; 0 Lux with IR LED ON		
White Balance	Auto / Manual	Auto / Manual	Auto / Manual
Electrical Shutter	1/30(1/25)s – 1/30000s	1/30(1/25)s – 1/30000s	1/30(1/25)s – 1/30000s
Sense Up	Off / x2 / x4 / x8 / x16	Off / x2 / x4 / x8 / x16	Off / x2 / x4 / x8 / x16
Sense Up+	Yes	Yes	Yes
Auto Gain Control	48 dB Variable Gain	48 dB Variable Gain	48 dB Variable Gain
EV (Exposure Value)	Adjustable	Adjustable	Adjustable
S/N Ratio	More than 50dB (AGC off)	More than 50dB (AGC off)	More than 50dB (AGC off)
3D Noise Reduction	Off / 1 – 32 Selectable	Off / 1 – 32 Selectable	Off / 1 – 32 Selectable
2D WDR	Off / Auto / x2 / x3 / x4	Off / Auto / x2 / x3 / x4	Off / Auto / x2 / x3 / x4
High Dynamic Range	Up to 120dB (by HDR mode, 2 shutter line interleave)	Up to 120dB (by HDR mode, 2 shutter line interleave)	Up to 120dB (by HDR mode, 2 shutter line interleave)
Privacy Masking	Off / On (4 zones)	Off / On (4 zones)	Off / On (4 zones)
Image Effects	Brightness, Contrast, Hue, Saturation, Sharpness, Mirror, Flip, Rotation, Defog	Brightness, Contrast, Hue, Saturation, Sharpness, Mirror, Flip, Rotation, Defog	Brightness, Contrast, Hue, Saturation, Sharpness, Mirror, Flip, Rotation, Defog
Auto Focus	Support	Support	Support
Infrared LED	850nm	850nm	850nm
Smart IR	55M	30M	30M
IP Rating	IP67	IP67	IP66
Vandal Resistant Rating	IK10	IK10	IK10
CE Certification	Yes, EMI Class A	Yes, EMI Class A	Yes, EMI Class A
FCC Certification	Yes, EMI Class A	Yes, EMI Class A	Yes, EMI Class A
UKCA Certification	Yes, EMI Class A	Yes, EMI Class A	Yes, EMI Class A
Starting Temperature	-10°C – +50°C (-14°F – 122°F)	-10°C – +50°C (-14°F – 122°F)	-10°C – +50°C (-14°F – 122°F)
Operating Temperature	-30°C – +50°C (-22°F – 122°F)	-30°C – +50°C (-22°F – 122°F)	-30°C – +50°C (-22°F – 122°F)
Storage Temperature	-25°C – +60°C (-13°F – 140°F)	-25°C – +60°C (-13°F – 140°F)	-25°C – +60°C (-13°F – 140°F)
Humidity	0% – 90% RH	0% – 90% RH	0% – 90% RH
Dimension	100(W) x 85(H) x 284(D) mm	Ø111 x 120(H) mm	Ø133 x 101(H) mm
Weight	930g	430g	560g
Power Supply	PoE (IEEE 802.3af compliant)	PoE (IEEE 802.3af compliant)	PoE (IEEE 802.3af compliant)
Power Consumption	POE, 9.9W	POE, 9.2W	POE, 8.4W
Video Compression	H.265/HEVC main profile, H.264 main and high profile , Motion JPEG		
Resolution	5MP(2880 x 1616), 4MP(2304 x 1728), 3.1MP(2048 x 1536), 3MP(2304 x 1296), 2MP(1920 x 1080), 1.3MP(1280 x 960), 1MP(1280 x 720), D1(720 x 480, 720 x 576), VGA(640 x 480), CIF(352 x 240)		
Video Streaming	RTP/HTTP, RTP/TCP, RTP/UDP, Multicast streams in H.265 and H.264 and Motion JPEG, configurable frame rate and bandwidth		
Number of streams	3	3	3
Video Bitrate	128Kbps – 12Mbps; Frame rate and bit rate controllable on-the-fly; VBR / CBR / GOP supported, Fixed bitrate		
Encryption	Base64 HTTP encryption, HTTPS encryption	Base64 HTTP encryption, HTTPS encryption	Base64 HTTP encryption, HTTPS encryption
Authentication	Digest HTTP authentication, RTSP authentication, DDNS via HTTPS		
Address Filter	Yes	Yes	Yes
Access	Multiple user access levels with password protection		
Artificial Intelligence	People / Car / Detection Zone / Detection Line		
Event Triggers	Motion / Tamper / Network lost detection / Global Counter / Virtual Input / Metadata		
Event actions	FTP / SMTP / HTTP post / SD card / SAMBA / Push Service / Global Counter / Virtual Input		
OSD	Position configurable text overlay for date, time, camera ID, event status		
Log	Event & operation log & IVS event log	Event & operation log & IVS event log	Event & operation log & IVS event log
Schedule	Support holiday list	Support holiday list	Support holiday list
Mobile Application	Integrated to LILIN mobile app with iPhone, iPad, Android support		
Video Management	ONVIF Profile S / ONVIF Profile T / ONVIF Profile G / IVS events, LILIN Navigator Enterprise 5.0 support, Third party VMS through LILIN HTTP API		

V1W 5MP H.265 Camera



Model	V1W9452E2	V1W4452E2	V1W9552X3	V1W4552X3
Resolution	5MP	5MP	5MP	5MP
Focal length	2.8mm	2.8mm	2.8~12mm	2.8~12mm
Aperture	F1.3	F1.3	F1.6 ~ F3.1	F1.6 ~ F3.1
Iris Control	Fixed	Fixed	Fixed	Fixed
Angle of View (HxVxD)	85 / 46 / 99.8	85 / 46 / 99.8	107.6° (W) – 38.1° (T) / 56.5° (W) – 21.4° (T) / 129.1° (W) – 43.5° (T)	107.6° (W) – 38.1° (T) / 56.5° (W) – 21.4° (T) / 129.1° (W) – 43.5° (T)
Pick Up Element	1/2.7" CMOS image sensor	1/2.7" CMOS image sensor	1/2.7" CMOS image sensor	1/2.7" CMOS image sensor
Effective Pixels	2880 (H) × 1620(V) = 4,665,600 (Pixels)	2880 (H) × 1620(V) = 4,665,600 (Pixels)	2880 (H) × 1620(V) = 4,665,600 (Pixels)	2880 (H) × 1620(V) = 4,665,600 (Pixels)
Scanning System	Progressive Scan	Progressive Scan	Progressive Scan	Progressive Scan
Infrared Cut Filter	Auto / Day (Color) / Night (Mono) / Schedule		Auto / Day (Color) / Night (Mono) / Schedule	
Min. Illumination	Color : 0.08 Lux at F1.3 ; B/W : 0.02 Lux at F1.3 ; 0 Lux with Light LED ON	Color : 0.08 Lux at F1.3 ; B/W : 0.02 Lux at F1.3 ; 0 Lux with Light LED ON	Color : 0.1 Lux at F1.6 ; B/W : 0.01 Lux at F1.6 ; 0 Lux with Light LED ON	Color : 0.1 Lux at F1.6 ; B/W : 0.01 Lux at F1.6 ; 0 Lux with Light LED ON
White Balance	Auto / Manual	Auto / Manual	Auto / Manual	Auto / Manual
Electrical Shutter	1/30(1/25)s – 1/30000s	1/30(1/25)s – 1/30000s	1/30(1/25)s – 1/30000s	1/30(1/25)s – 1/30000s
Sense Up	Off / x2 / x4 / x8 / x16	Off / x2 / x4 / x8 / x16	Off / x2 / x4 / x8 / x16	Off / x2 / x4 / x8 / x16
Sense Up+	Yes	Yes	Yes	Yes
Auto Gain Control	48 dB Variable Gain	48 dB Variable Gain	48 dB Variable Gain	48 dB Variable Gain
EV (Exposure Value)	Adjustable	Adjustable	Adjustable	Adjustable
S/N Ratio	More than 50dB (AGC off)	More than 50dB (AGC off)	More than 50dB (AGC off)	More than 50dB (AGC off)
3D Noise Reduction	Off / 1 – 32 Selectable	Off / 1 – 32 Selectable	Off / 1 – 32 Selectable	Off / 1 – 32 Selectable
2D WDR	Off / Auto / x2 / x3 / x4	Off / Auto / x2 / x3 / x4	Off / Auto / x2 / x3 / x4	Off / Auto / x2 / x3 / x4
High Dynamic Range	Up to 120dB (by HDR mode, 2 shutter line interleave)	Up to 120dB (by HDR mode, 2 shutter line interleave)	Up to 120dB (by HDR mode, 2 shutter line interleave)	Up to 120dB (by HDR mode, 2 shutter line interleave)
Privacy Masking	Off / On (4 zones)	Off / On (4 zones)	Off / On (4 zones)	Off / On (4 zones)
Image Effects	Brightness, Contrast, Hue, Saturation, Sharpness, Mirror, Flip, Rotation, Defog			
Auto Focus	-	-	Support	Support
Infrared LED	IR : 850nm, Warm Light : 3000K	IR : 850nm, Warm Light : 3000K	IR : 850nm, Warm Light : 3000K	IR : 850nm, Warm Light : 3000K
Smart IR	IR : 30M, Warm Light : 25M	IR : 30M, Warm Light : 25M	IR : 35M, Warm Light : 30M	IR : 30M, Warm Light : 25M
IP Rating	IP67	IP67	IP67	IP67
Vandal Resistant Rating	IK10	IK10	IK10	IK10
CE Certification	Yes, EMI Class A	Yes, EMI Class A	Yes, EMI Class A	Yes, EMI Class A
FCC Certification	Yes, EMI Class A	Yes, EMI Class A	Yes, EMI Class A	Yes, EMI Class A
UKCA Certification	--	--	--	--
Starting Temperature	-10°C – +50°C (-14°F – 122°F)	-10°C – +50°C (-14°F – 122°F)	-10°C – +50°C (-14°F – 122°F)	-10°C – +50°C (-14°F – 122°F)
Operating Temperature	-30°C – +50°C (-22°F – 122°F)	-30°C – +50°C (-22°F – 122°F)	-30°C – +50°C (-22°F – 122°F)	-30°C – +50°C (-22°F – 122°F)
Storage Temperature	-25°C – +60°C (-13°F – 140°F)	-25°C – +60°C (-13°F – 140°F)	-25°C – +60°C (-13°F – 140°F)	-25°C – +60°C (-13°F – 140°F)
Humidity	0% – 90% RH	0% – 90% RH	0% – 90% RH	0% – 90% RH
Dimension	70(W) x 70(H) x 193(D) mm	Ø111 x 87(H) mm	100(W) x 85(H) x 284(D) mm	Ø111 x 120(H) mm
Weight	370g	370g	930g	430g
Power Supply	PoE (IEEE 802.3af compliant)	PoE (IEEE 802.3af compliant)	PoE (IEEE 802.3af compliant)	PoE (IEEE 802.3af compliant)
Power Consumption	POE, 6.9W	POE, 5.7W	POE, 9.7W	POE, 8.0W
Video Compression	H.265/HEVC main profile, H.264 main and high profile, Motion JPEG		H.265/HEVC main profile, H.264 main and high profile, Motion JPEG	
Resolution	5MP(2880 × 1616), 4MP(2304 × 1728), 3.1MP(2048 × 1536), 3MP(2304 × 1296), 2MP(1920 × 1080), 1.3MP(1280 × 960), 1MP(1280 × 720), D1(720 × 480, 720 × 576), VGA(640 × 480), CIF(352 × 240)			
Video Streaming	RTP/HTTP, RTP/TCP, RTP/UDP, Multicast streams in H.265 and H.264 and Motion JPEG, configurable frame rate and bandwidth			
Number of streams	3	3	3	3
Video Bitrate	128Kbps – 12Mbps; Frame rate and bit rate controllable on-the-fly; VBR / CBR / GOP supported, Fixed bitrate			
Encryption	Base64 HTTP encryption, HTTPS encryption			
Authentication	Digest HTTP authentication, RTSP authentication, DDNS via HTTPS			
Address Filter	Yes	Yes	Yes	Yes
Access	Multiple user access levels with password protection			
Artificial Intelligence	People / Car / Detection Zone / Detection Line			
Event Triggers	Motion / Tamper / Network lost detection / Global Counter / Virtual Input / Metadata			
Event actions	FTP / SMTP / HTTP post / SD card / SAMBA / Push Service / Global Counter / Virtual Input			
OSD	Position configurable text overlay for date, time, camera ID, event status			
Log	Event & operation log & IVS event log			
Schedule	Support holiday list	Support holiday list	Support holiday list	Support holiday list
Mobile Application	Integrated to LILIN mobile app with iPhone, iPad, Android support		Integrated to LILIN mobile app with iPhone, iPad, Android support	
Video Management	ONVIF Profile S / ONVIF Profile T / ONVIF Profile G / IVS events, LILIN Navigator Enterprise 5.0 support, Third party VMS through LILIN HTTP API			

V1W 8MP(4K) H.265 Camera



Model	V1W9182A	V1W4082A	V1W9282AX	V1W4182AX
Resolution	4K	4K	4K	4K
Focal length	3.6mm	3.6mm	2.8~12mm	2.8~12mm
Aperture	F1.0	F1.0	F1.2	F1.2
Iris Control	Fixed	Fixed	Fixed	Fixed
Angle of View (HxVxD)	85° / 46° / 99.8°	85° / 46° / 99.8°	107° (W) – 34° (T) 56° (W) – 19° (T) 129° (W) – 39° (T)	107° (W) – 34° (T) 56° (W) – 19° (T) 129° (W) – 39° (T)
Pick Up Element	1/2.8" CMOS image sensor	1/2.8" CMOS image sensor	1/2.8" CMOS image sensor	1/2.8" CMOS image sensor
Effective Pixels	3864 (H) × 2176 (V) = 8,408,064 (Pixels)	3864 (H) × 2176 (V) = 8,408,064 (Pixels)	3864 (H) × 2176 (V) = 8,408,064 (Pixels)	3864 (H) × 2176 (V) = 8,408,064 (Pixels)
Scanning System	Progressive Scan	Progressive Scan	Progressive Scan	Progressive Scan
Infrared Cut Filter	Auto / Day (Color) / Night (Mono) / Schedule			
Min. Illumination	Color : 0.08 Lux at F1.0 ; B/W : 0.02 Lux at F1.0 ; 0 Lux with IR LED ON	Color : 0.08 Lux at F1.0 ; B/W : 0.02 Lux at F1.0 ; 0 Lux with IR LED ON	Color : 0.09 Lux at F1.2 ; B/W : 0.03 Lux at F1.2 ; 0 Lux with IR LED ON	Color : 0.09 Lux at F1.2 ; B/W : 0.03 Lux at F1.2 ; 0 Lux with IR LED ON
White Balance	Auto / Manual	Auto / Manual	Auto / Manual	Auto / Manual
Electrical Shutter	1/30(1/25)s – 1/20000s	1/30(1/25)s – 1/30000s	1/30(1/25)s – 1/30000s	1/30(1/25)s – 1/20000s
Sense Up	Off / x2 / x4 / x8 / x16	Off / x2 / x4 / x8 / x16	Off / x2 / x4 / x8 / x16	Off / x2 / x4 / x8 / x16
Sense Up+	Yes	Yes	Yes	Yes
Auto Gain Control	48 dB Variable Gain	48 dB Variable Gain	48 dB Variable Gain	48 dB Variable Gain
EV (Exposure Value)	Adjustable	Adjustable	Adjustable	Adjustable
S/N Ratio	More than 50dB (AGC off)	More than 50dB (AGC off)	More than 50dB (AGC off)	More than 50dB (AGC off)
3D Noise Reduction	Off / 1 – 32 Selectable	Off / 1 – 32 Selectable	Off / 1 – 32 Selectable	Off / 1 – 32 Selectable
2D WDR	Off / Auto / x2 / x3 / x4	Off / Auto / x2 / x3 / x4	Off / Auto / x2 / x3 / x4	Off / Auto / x2 / x3 / x4
High Dynamic Range	Up to 140dB (by HDR mode, 2 shutter line interleave)	Up to 140dB (by HDR mode, 2 shutter line interleave)	Up to 140dB (by HDR mode, 2 shutter line interleave)	Up to 140dB (by HDR mode, 2 shutter line interleave)
Privacy Masking	Off / On (4 zones)	Off / On (4 zones)	Off / On (4 zones)	Off / On (4 zones)
Image Effects	Brightness, Contrast, Hue, Saturation, Sharpness, Mirror, Flip, Rotation, Defog			
Auto Focus	-	-	Support	Support
Infrared LED	IR : 850nm, Warm Light : 3000K	IR : 850nm, Warm Light : 3000K	IR : 850nm, Warm Light : 3000K	IR : 850nm, Warm Light : 3000K
Smart IR	IR : 30M, Warm Light : 25M	IR : 30M, Warm Light : 25M	IR : 35M, Warm Light : 30M	IR : 30M, Warm Light : 25M
IP Rating	IP67	IP67	IP67	IP67
Vandal Resistant Rating	IK10	IK10	IK10	IK10
CE Certification	Yes, EMI Class A	Yes, EMI Class A	Yes, EMI Class A	Yes, EMI Class A
FCC Certification	Yes, EMI Class A	Yes, EMI Class A	Yes, EMI Class A	Yes, EMI Class A
UKCA Certification	Yes, EMI Class A	Yes, EMI Class A	Yes, EMI Class A	Yes, EMI Class A
Starting Temperature	-10°C – +50°C (-14°F – 122°F)	-10°C – +50°C (-14°F – 122°F)	-10°C – +50°C (-14°F – 122°F)	-10°C – +50°C (-14°F – 122°F)
Operating Temperature	-30°C – +50°C (-22°F – 122°F)	-30°C – +50°C (-22°F – 122°F)	-30°C – +50°C (-22°F – 122°F)	-30°C – +50°C (-22°F – 122°F)
Storage Temperature	-25°C – +60°C (-13°F – 140°F)	-25°C – +60°C (-13°F – 140°F)	-25°C – +60°C (-13°F – 140°F)	-25°C – +60°C (-13°F – 140°F)
Humidity	0% – 90% RH	0% – 90% RH	0% – 90% RH	0% – 90% RH
Dimension	75(W) × 75(H) × 152(D) mm	Ø100 x 90mm	88(W) × 91(H) × 241(D) mm	Ø136 x 127mm
Weight	355g	415g	695g	825g
Power Supply	DC12V ±10% / PoE (IEEE 802.3af compliant)	DC12V ±10% / PoE (IEEE 802.3af compliant)	DC12V ±10% / PoE (IEEE 802.3af compliant)	DC12V ±10% / PoE (IEEE 802.3af compliant)
Power Consumption	DC12V, 10.5W / PoE, 12W	DC12V, 10.5W / PoE, 12W	DC12V, 12.6W / PoE, 14.2W	DC12V, 11.3W / PoE, 12.7W
Video Compression	H.265/HEVC main profile, H.264 main and high profile, Motion JPEG			
Resolution	4K(3840 × 2160), 6M(3072 × 2048), 5MP(2592 × 1944), 4MP(2304 × 1728), 3.1MP(2048 × 1536), 3MP(2304 × 1296), 2MP(1920 × 1080), 1.3MP(1280 × 960), 1MP(1280 × 720), D1(720 × 480, 720 × 576), VGA(640 × 480), CIF(352 × 240)			
Video Streaming	RTP/HTTP, RTP/TCP, RTP/UDP, Multicast streams in H.265 and H.264 and Motion JPEG, configurable frame rate and bandwidth			
Number of streams	3	3	3	3
Video Bitrate	128Kbps – 12Mbps; Frame rate and bit rate controllable on-the-fly; VBR / CBR / GOP supported, Fixed bitrate			
Encryption	Base64 HTTP encryption, HTTPS encryption			
Authentication	Digest HTTP authentication, RTSP authentication, DDNS via HTTPS			
Address Filter	Yes	Yes	Yes	Yes
Access	Multiple user access levels with password protection			
Artificial Intelligence	People / Car / Detection Zone / Detection Line			
Event Triggers	Motion / Tamper / Audio / Network lost detection / Global Counter / Virtual Input / Metadata			
Event actions	FTP / SMTP / HTTP post / SD card / SAMBA / Push Service / Global Counter / Virtual Input / IR LED			
OSD	Position configurable text overlay for date, time, camera ID, event status			
Log	Event & operation log & IVS event log			
Schedule	Support holiday list			
Mobile Application	Integrated to LILIN mobile app with iPhone, iPad, Android support			
Video Management	ONVIF Profile S / ONVIF Profile T / ONVIF Profile G / IVS events, LILIN Navigator Enterprise 5.0 support, Third party VMS through LILIN HTTP API			

Why V1 Series Special

Features

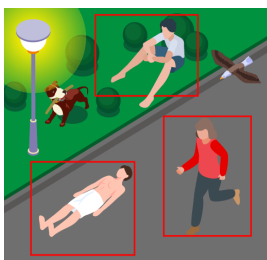


Function	Description		
Recognized objects	Support detection of the following types of human postures: standing, running, squatting, moving forward, crawling, climbing, hatted, under umbrella, etc.		
	Support the following types of vehicle recognition: bicycle, car, motorbike, bus, truck		
Results Display	Support conditional display results according to specified objects		
Behavior Detection	Prohibited Zone	Support triggering an event when specified object(s) enters restricted area	
	Zone with Dwell	Support triggering an event when specified object(s) enters restricted area and stays for a predefined duration of time	
	Tripwire / Traffic Flow	Support triggering an event when specified object(s) crosses the designed line in a predefined direction	
	AI Missing Object Detection	Support triggering an event when specified object(s) has been missing from the set detection zone for a predefined duration of time	
	All Object Detection(AND)	Support triggering an event when all of the specified objects show up within the set detection zone at the same time (based on AND rule)	
	Lack of any Object Detection (NAND)	Support triggering an event when any of the specified objects is not present within the set detection zone (based on NAND rule)	
Recognition Speed	Support object recognition speed up to 4 frames per second		
Number of Detectable Objects	Can detect up to 18 objects per frame		
Video Resolution	Support up to 5M (2880 x 1612) resolution for image capture, 720P resolution is used for recognition		
Object Filtering	Object Type	Support recognizing specified object, instead of processing all types of objects	
	Object Size	Support 0~100% adjustable size of object (compared to frame) for classification	
	Object Confidence Level	Support 0~100% adjustable confidence level of object	
Event Trigger	Support setting trigger by specific behaviors of specified objects		
	Support setting 8 Cold Zones to minimize false alarms and improve the accuracy		
Detection Time	After an event is triggered by specified object, the next detection will be carried out according to the set detection time (2~30 seconds)		
Minimum Recognition Resolution	Support vehicle recognition at 80X80 pixels, person recognition at 80X100 pixels, and motorcycle/bicycle recognition at 80X100 pixels.		
Detection Zone / Line	Support setting 4 detection zones (about the size of camera FoV) or lines which are influenced by independent filter condition (object size, confidence, dwell, classification and behavior) and to trigger independent events (output)		
Polygon Detection	Support detection zone which is a polygon that can be freely dragged and that the shape can be modified by 6 draggable anchor points		
	Support detection line which is a line attached to a polygon that the shape can be modified by 4 draggable anchor points. Also, direction of the line can be set by dragging the 4 anchor points or clicking the "Enable direction button"		
Pixel Count	Support displaying the pixel count of selected object(s) on the web UI		
Alarm Output	Digital Output	Support triggering digital output of camera	
	Smart Event	Support triggering up to 4 virtual inputs of camera	
	HTTP POST	Support displaying an alarm on LILIN IP LED Panel	
		Support displaying an alarm on specific channel of LILIN Navigator VMS	
		Support triggering digital outputs for LILIN I/O Box	
		Support triggering digital outputs for LILIN NVR	
Support triggering HTTP POST to integrate with third-party devices			
Support triggering a PTZ camera to go to a preset			
Heartbeat Checking	Support checking the camera AI operation status and pushing notifications every 1~30 minutes		
Recording System Integration	Support event search to playback or snapshot on LILIN Navigator VMS and NVR		
API Integration	Support API integration with third-party VMS and provide camera SDK files		
Interface Language	Support Traditional Chinese, English, Japanese and Italian		

What AI Cameras Can Help

Applications

*The concept of conventional electronic fences is pretty simple.
Objects that touch a pre-defined line or area will trigger an alarm.
But that's not efficient. Should the alarm be triggered if there are just leaves flying over?*



Object Recognition

AI enables us to accurately distinguish between threats and harmless animals like dogs and birds. AI enhances our ability to detect human beings in various dynamic and static postures, leaving no room for them to hide.

Full I/O Intergration

By combining peripheral devices, our system can generate various event types and send them via HTTP POST, or alternatively, integrate with backend services using SDK.

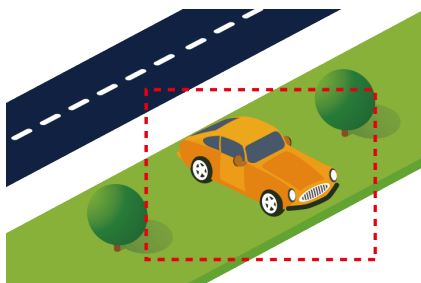


Cold Zone

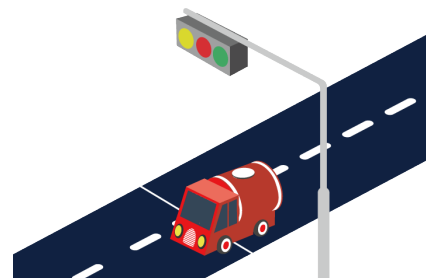
Defining inactive areas is crucial in minimizing false alarms and reducing the workload on the system and personnel.



Set the guard area directly on the window to prevent burglars from escaping.



Define non-parking zones for detecting violations.



Integrate with traffic light to perform smarter traffic law enforcement, such as line-crossing violation.

Successful Stories

Vertical Applications

