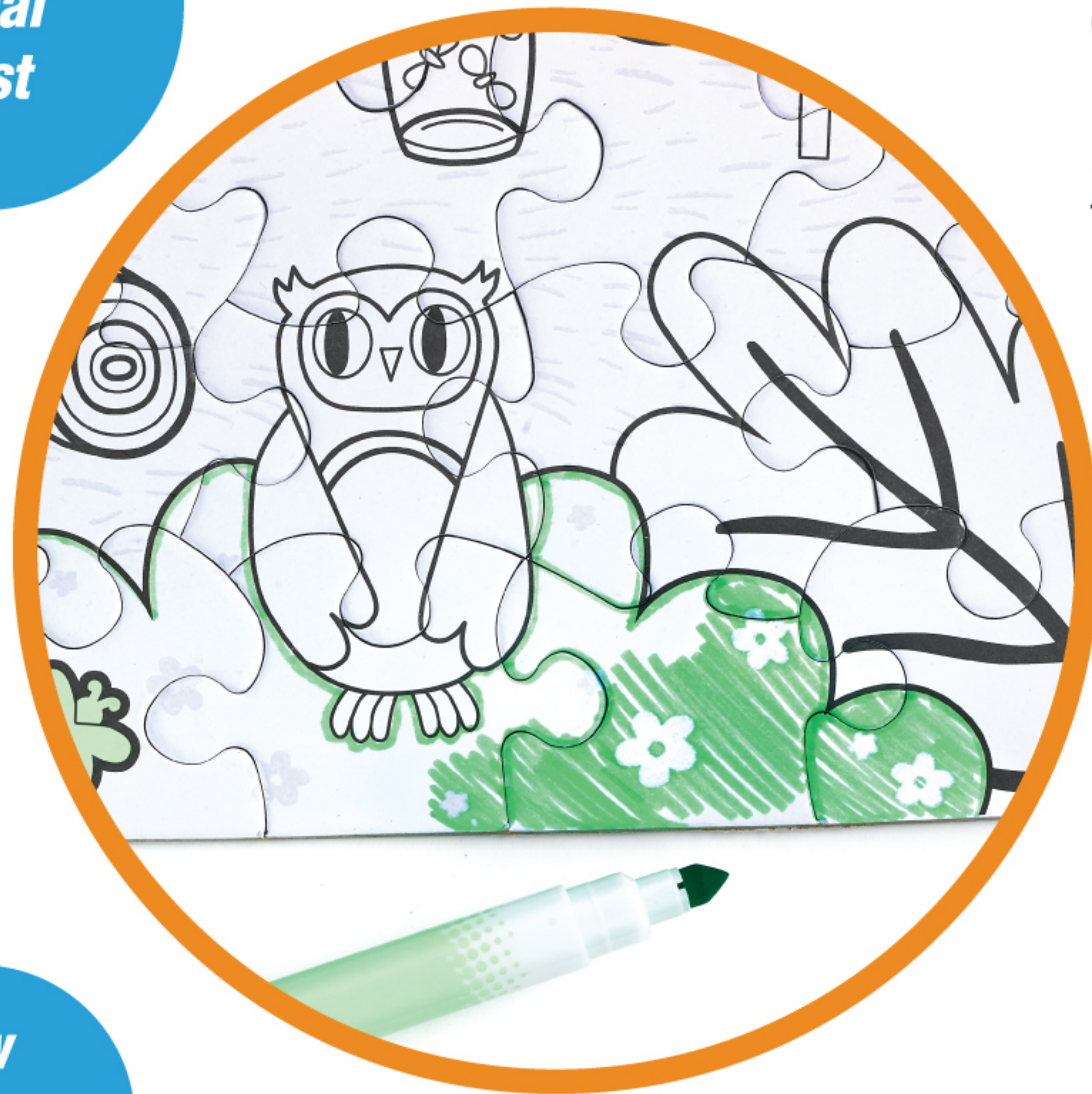


Surprise
reveal
resist



There are some designs printed with resist ink hidden in this puzzle. Start coloring to reveal the designs!

Use a tissue or paper towel to wipe away marker ink that sits on top of the resist. This will make the design even brighter!

Watch as designs appear once marker color is applied

Glow
in the
dark



Find the **5** glow in the dark fireflies!

For optimal glow, leave the puzzle under direct sunlight or artificial light for charging.

Avoid coloring over the fireflies. If you color over the glow ink, the marker will smear!

Color By Number Puzzle - Camping #14358

© Faber-Castell USA, Inc.
Cleveland, Ohio 44125
Conforms to ASTM D-4236
Non-toxic Safe for Children

Need Help?
Call: 800-311-8684
E-mail: consumer@fabercastell.com
Chat or view FAQs & INFO online:
www.fabercastell.com

color by number puzzle

Begin by assembling the puzzle. Use the bonus poster and coloring guide to help with assembly.

What's
included



Puzzle

Coloring Guide
flips over for
bonus poster



DuoTip
Markers



DuoTip
markers

DuoTip markers have a special marker nib that can make both thin and broad stroke widths; perfect for a variety of arts and crafts projects.



2 stroke widths:
thin & broad

Faber-Castell 12-Count DuoTip Markers contain 24 vibrant colors and these dual tip markers are built to last! Instead of throwing away dried markers, Faber-Castell DuoTip Markers can easily be rehydrated by dipping the coloring marker's tip in water.

DuoTip markers are washable from skin with soap and water, but may stain clothing, fabric and other surfaces

Color Key

Use this marker guide for color matching. You can also be creative and color the puzzle however you like!

- Cherry - 1  13 - Green 
- Orange - 2  14 - Forest 
- Yellow - 3  15 - Pink 
- Mint - 4  16 - Sepia 
- Emerald - 5  17 - Raspberry 
- Ocean - 6  18 - Purple 
- Denim - 7  19 - Blush 
- Cobalt - 8  20 - Grey 
- Lavender - 9  21 - Turquoise 
- Nut - 10  22 - Peach 
- Dove - 11  23 - Plum 
- Black - 12  24 - Lemon 

The following colors, 2, 14, 17, and 22, are not used in the Color Guide.



Find the matching marker for your section. Trace around any puzzle edges in that piece.



Next, color it in!

Blending with markers

Hatching and crosshatching
Drawing many lines next to each other will blend marker colors



8+18



6+7



There are **2** different areas to blend colors on the color guide

