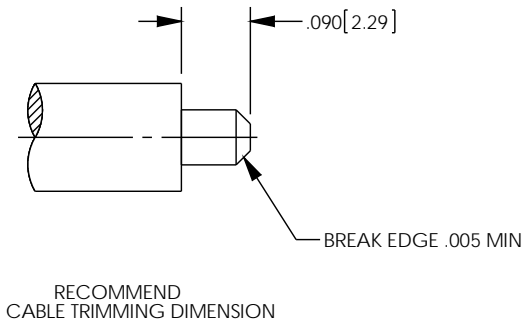
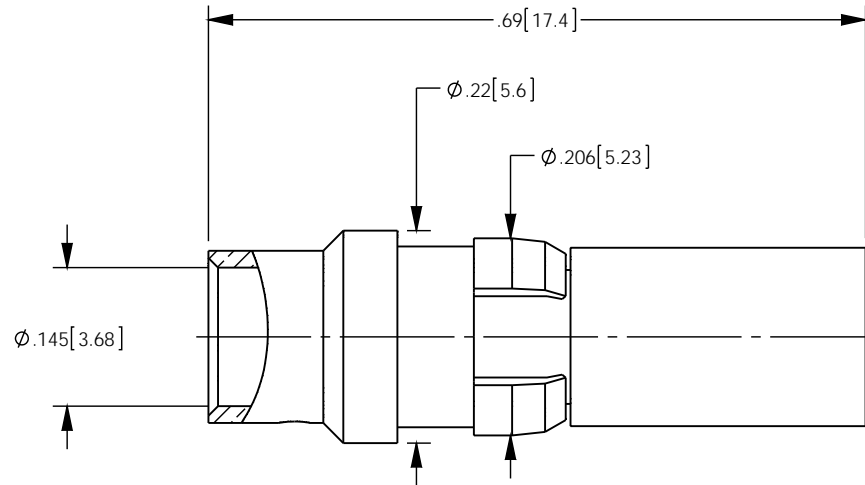


NOTES: UNLESS OTHERWISE SPECIFIED

1. FOR GENERAL SERIES SPECIFICATIONS, SEE SD117-0000
2. DESIGNED FOR USE WITH  $\phi$ .141 SEMI- RIGID OR EQUIVALENT CABLE
3. MATERIAL SPECIFICATIONS:  
 BODY: BRASS PER ASTM B16  
 CLIP RING, OUTER CONTACT, CONTACT: BERYLLIUM COPPER PER ASTM B196  
 INSULATOR: PTFE PER ASTM D1710
4. FINISH SPECIFICATIONS:  
 BODY, CLIP RING: .000005 MIN GOLD PLATE PER ASTM 488 OVER .000100 MIN COPPER PER ASTM B734 (RoHS)  
 CONTACT: .000030 MIN GOLD PLATE PER ASTM B488 OVER .000100 MIN COPPER PER ASTM B734 (RoHS)  
 OUTER CONTACT: .000015 MIN GOLD PLATE PER ASTM B488 OVER .000100 MIN COPPER PER ASTM B734 (RoHS)
5. ELECTRICAL SPECIFICATIONS:  
 IMPEDANCE: 50 OHMS  
 FREQUENCY RANGE: DC - 32 GHz  
 VSWR: 1.08+ 0.009 x F(in GHz)
6. ASSEMBLE TO CABLE USING CAP 5-35 WITH TRIM DIMENSIONS SHOWN BELOW

REV	DESCRIPTION	BY DATE	APPD
01	NEW DRAWING PER ER053907	MAR 06/20/14	Dcam



CATALOG P/N: 1173-500-14101J

PER ASME Y14.5M-1994 UNLESS OTHERWISE SPECIFIED: DIMENSIONS ARE IN INCHES [MM] TOLERANCES: DECIMAL: XX [X.X] ± .01 [0.3] XXX [X.XX] ± .005 [0.13] XXXX [X.XXX] ± .XXXX ANGLES: ± 2° SCALE: 5:1		Winchester Electronics Corporation 199 Park Road Ext Suite 104 Middlebury, Connecticut 06762	
<b>CUSTOMER SALES DRAWING</b>		THIRD ANGLE 	117 SERIES, STRAIGHT JACK, FOR $\phi$ .141 SEMI-RIGID OR EQUIVALENT CABLE (RoHS)
DRAWN	DATE	APPROVED	DATE
MAR	06/20/14	XXX	XX/XX/XX
APPROVED	DATE	APPROVED	DATE
Dcam	06/20/14	XXX	XX/XX/XX
<b>A</b> sd1173-500-14101j		SHT OF 1 1	REV 01