



# Build & Grow Tree House



## Important Information About the Paint

- Cover your work surface and wear a smock or old clothes. The paint may stain clothing, fabric and other surfaces.
- Clean up spills immediately. Wash clothing within an hour to help prevent stains.
- Have a cup of water and paper towels handy.
- Rinse your paint brush and sponge with water before changing colors and after use.

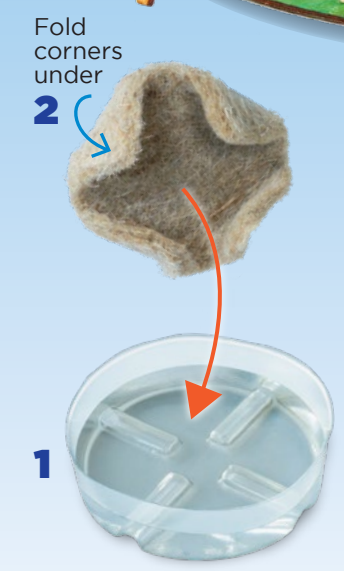
## Prep your grow trays

1. Use your dropper to add water to the trays. Fill each one about halfway.
2. Folding the corners under, place each grow mat inside the trays. Gently press them into the water and let them soak for at least 15 minutes.

Start building your tree house while you wait.

**Pro Tips:** If the mats seem a little dry after 15 minutes, add a few more drops of water being careful not to overfill the tray.

Save leftover seeds to grow again later.



3. Once your grow mats have absorbed the water, sprinkle a few seeds around each mat. Save the rest to replant later. Set the trays aside until your tree house is ready.



## Place your chia

When your tree house is complete, carefully add the chia trays. Line up the tray indents with the branches to fit them in place.

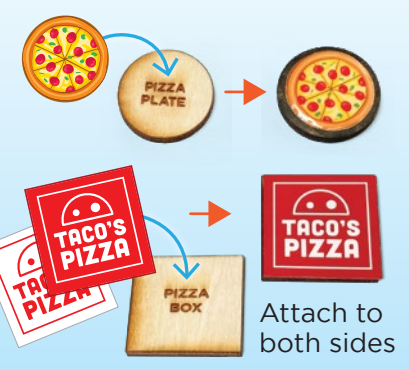
In most cases the seeds will begin to sprout in about 2-3 days. For best results, keep your tree house in a warm sunny place. Use your dropper to water daily.



**Note** - If you notice new fuzzy growth, it's most likely tiny roots. Sometimes excess humidity causes mold to grow. Better air circulation helps. This type of mold is nature's way of breaking down plant material to create new soil and is not harmful to your health.

## Pizza

Attach the stickers



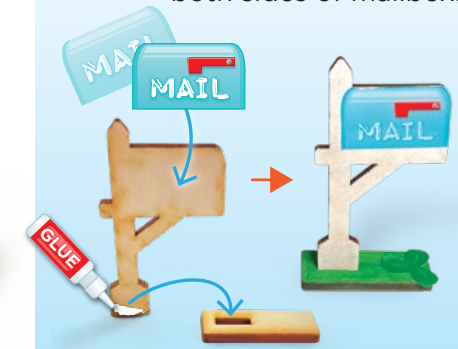
## Guitar

Attach sticker to guitar.

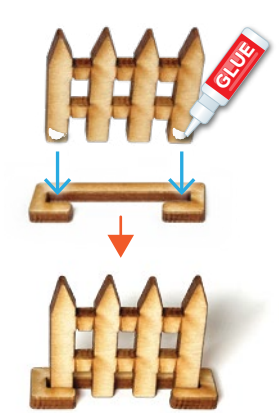


## Mailbox

Attach stickers to both sides of mailbox.

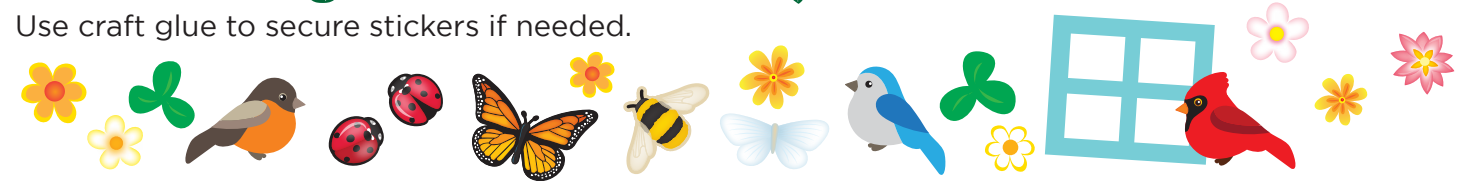


## Fences



## Decorate your Tree House, inside & out

Use craft glue to secure stickers if needed.



Stickers for your walls!



Two tiny rugs!



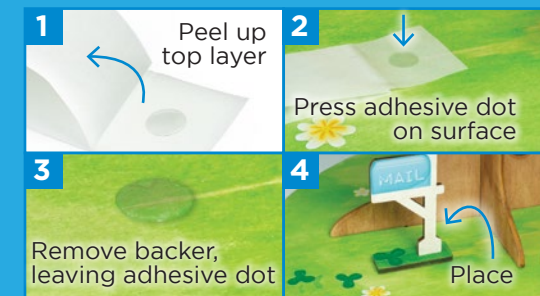
## Add your animal figures

These little animals can be taken apart and reassembled.



Handle with care and save any leftover materials for touch up and repairs.

**Pro Tips:** Use the re-positionable adhesive dots to hold your tiny things in place as shown below.



You can purchase more chia seeds at your local grocery and garden stores or online.

Paper towels can be used as grow mats. Just fold them a few times and cut to size as needed.

**Need Help?**  
Call: 800-311-8684 e-mail: [consumer@fabercastell.com](mailto:consumer@fabercastell.com)  
Chat or view **FAQS & INFO** online: [www.creativityforkids.com](http://www.creativityforkids.com)

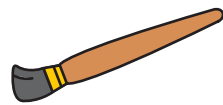
#6339000 Build & Grow Tree House  
© Faber-Castell USA, Inc. • Cleveland, Ohio 44125 • [www.fabercastell.com](http://www.fabercastell.com)  
Designed in USA • Made in China  
Conforms to ASTM D-4236 • Non-toxic Safe for children



[www.CreativityforKids.com](http://www.CreativityforKids.com)

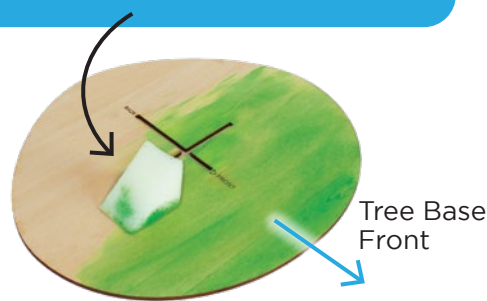


# Let's Paint



Start by painting the base then both sides of the tree pieces. Allow the paint to dry on each side for about 10-15 minutes.

**Pro Tip:** Use the small sponge to paint large areas more quickly.



**Pro Tip:** Smooth out any rough edges with the sandpaper.

Once the base is dry you can make a sealer to help protect it from water drops. In the paint tray lid, use your brush to mix some glue with a few drops of water. Paint it on the base and let it dry. **You may choose to leave your tree base unsealed. Dried water marks create cool patterns and textures.**

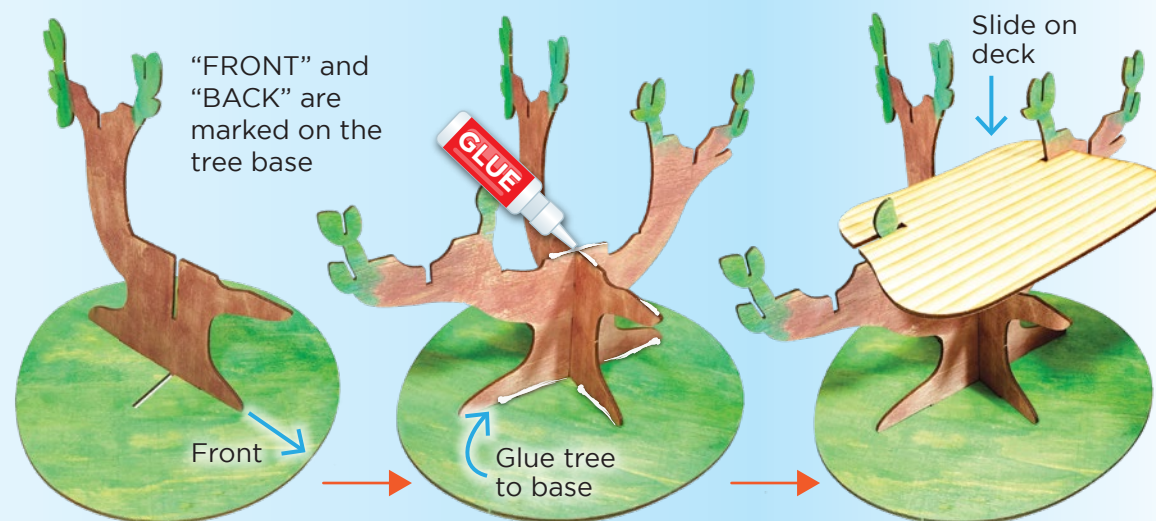


## Time to Build

### Tree and Deck

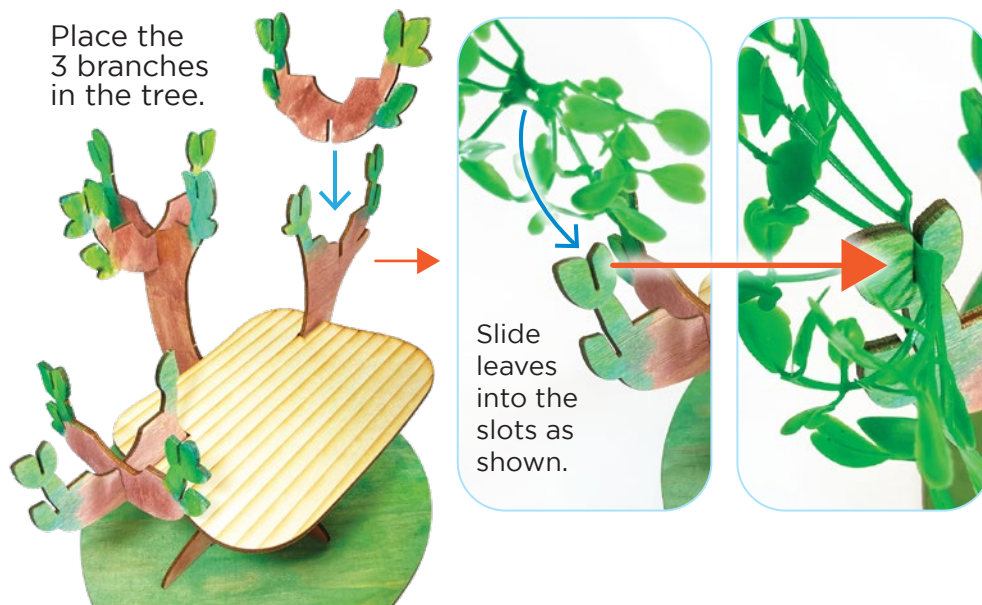
Assemble and glue. Allow 5-10 minutes for the glue to dry.

**Pro Tip:** When gluing, add **small** amounts. It will dry faster and still hold together.



### Attach the Branches and Leaves

Place the 3 branches in the tree.

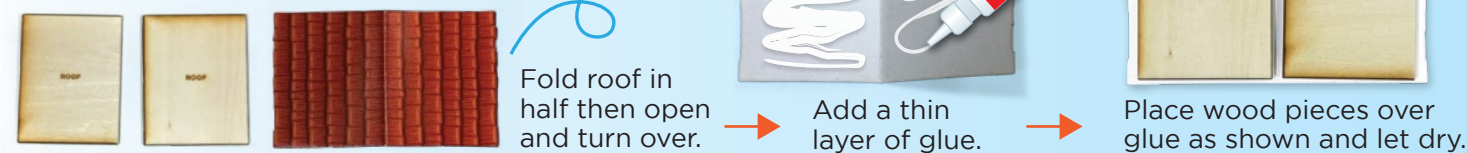


**Pro Tip:** When you're no longer growing chia, replace it with the extra leaves included in your kit. Just set them inside each branch.

**Gather the parts shown to make your tiny objects.** Add small amounts of glue as needed. You can also paint the pieces. Allow time for the paint and glue to dry.

**Pro Tip:** White paint may need two coats. Allow the first coat to dry before applying the second.

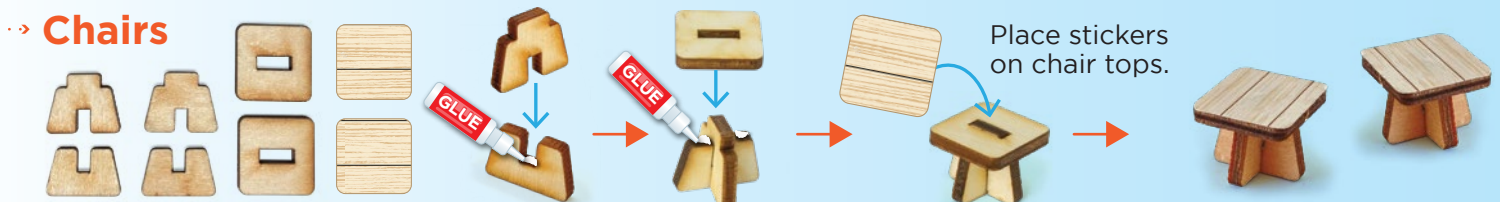
### Tree House Roof



### Tree House Walls



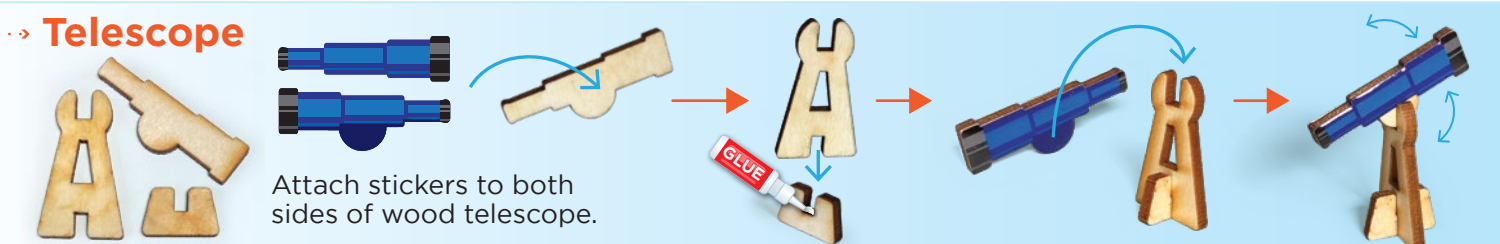
### Chairs



### Table



### Telescope



### Tire swing



### Bike

