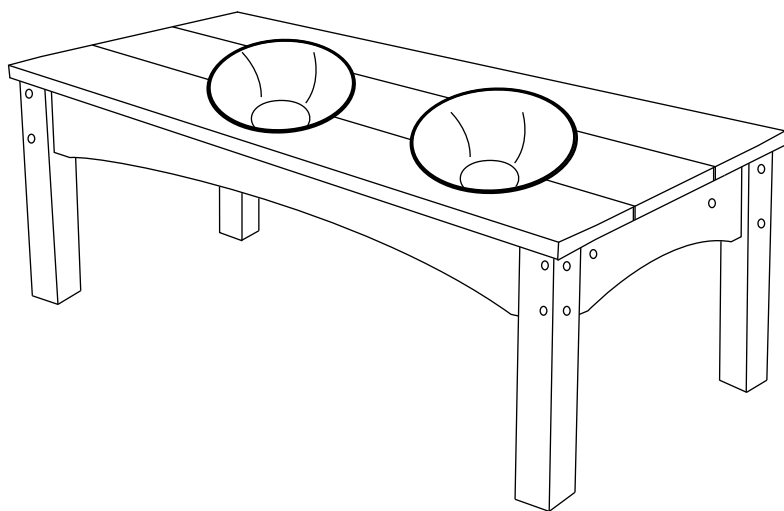


INSTRUCTION MANUAL



Elevated Pet Feeder
SKU: PF1001

V1.0

! NOTICE

Do not overtighten screws. (Insert all screws before tightening screws.)

- Please do not exceed the weight limitations of this item.
- Do not stand on or use any part of this item as a step ladder.
- Firmly secure all bolts, screws and nuts before use.
- Reconfirm that all bolts, screws, and nuts are secure every 90 days.
- Do not use or store this item in the proximity of open flame or flammable/combustible chemicals.
- Be aware that some parts are heavy and have sharp edges.

TOOLS REQUIRED



ALLEN WRENCH
(PROVIDED)



1 PERSON
ASSEMBLY

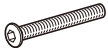


UP TO 20 MIN.
ASSEMBLY

HARDWARE

1

M5 x 50mm
BOLT



8 PCS

2

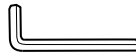
M5 x 30mm
BOLT



4 PCS

3

ALLEN
WRENCH

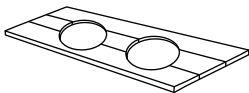


1 PC

PARTS

A

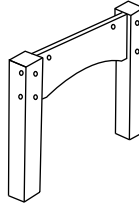
FEEDER TOP



1 PC

B

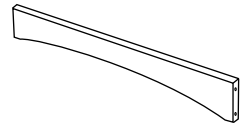
FEEDER LEG



2 PCS

C

LONG RAIL



2 PCS

D

BOWL



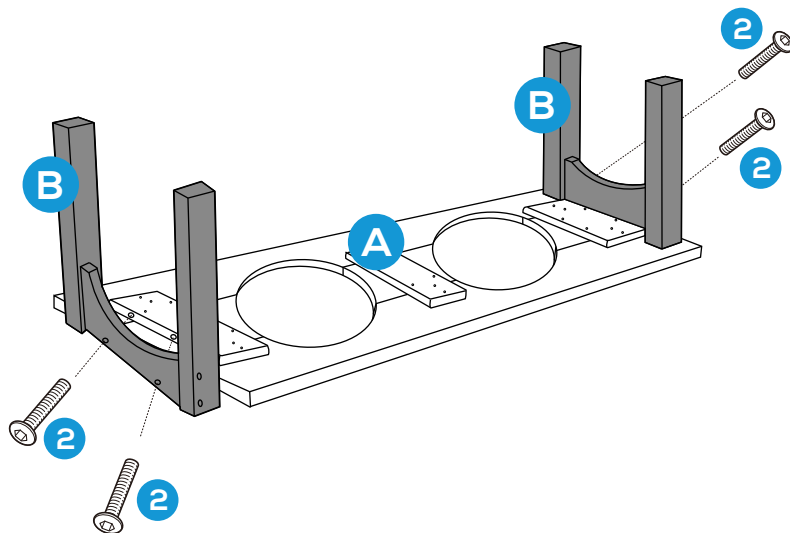
2 PCS

PRODUCT ASSEMBLY

1

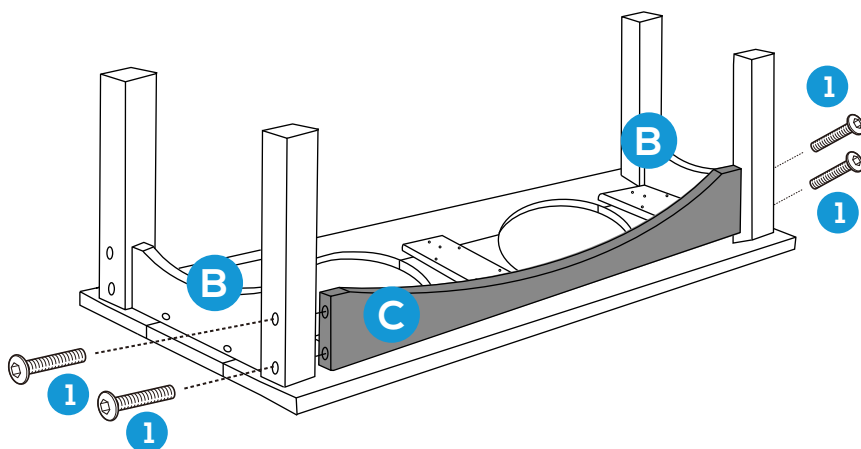
Place part A Feeder Top upside down on soft surface like carpet to avoid damage to the paint.

Attach the part B Feeder Legs onto part A Feeder Top with 4 PCS of hardware 2 Bolt.



2

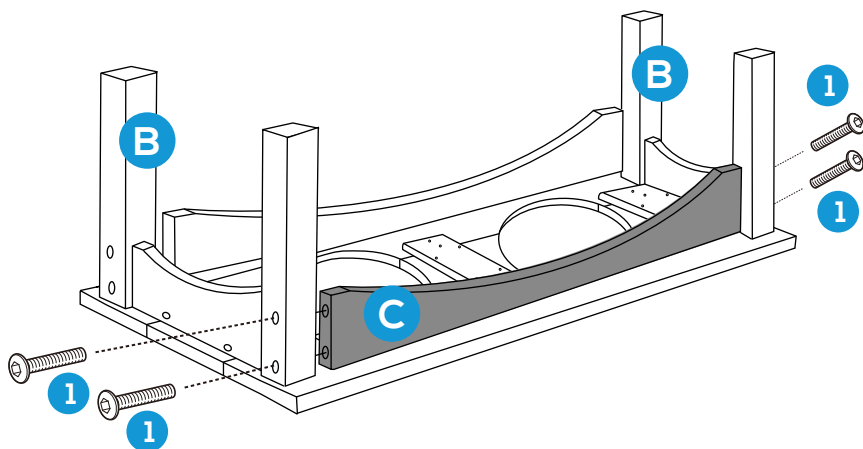
Place part C Long rail between two Feeder legs and attach them with 4 PCS of hardware 1 Bolt.



PRODUCT ASSEMBLY

3

Place another part C Long rail between two Feeder legs and attach them with 4 PCS of hardware 1 Bolt.



4

Tighten all the bolts again to ensure this feeder is steady enough to use.

Place part D Bowls into the holes to finish the Pet feeder.

