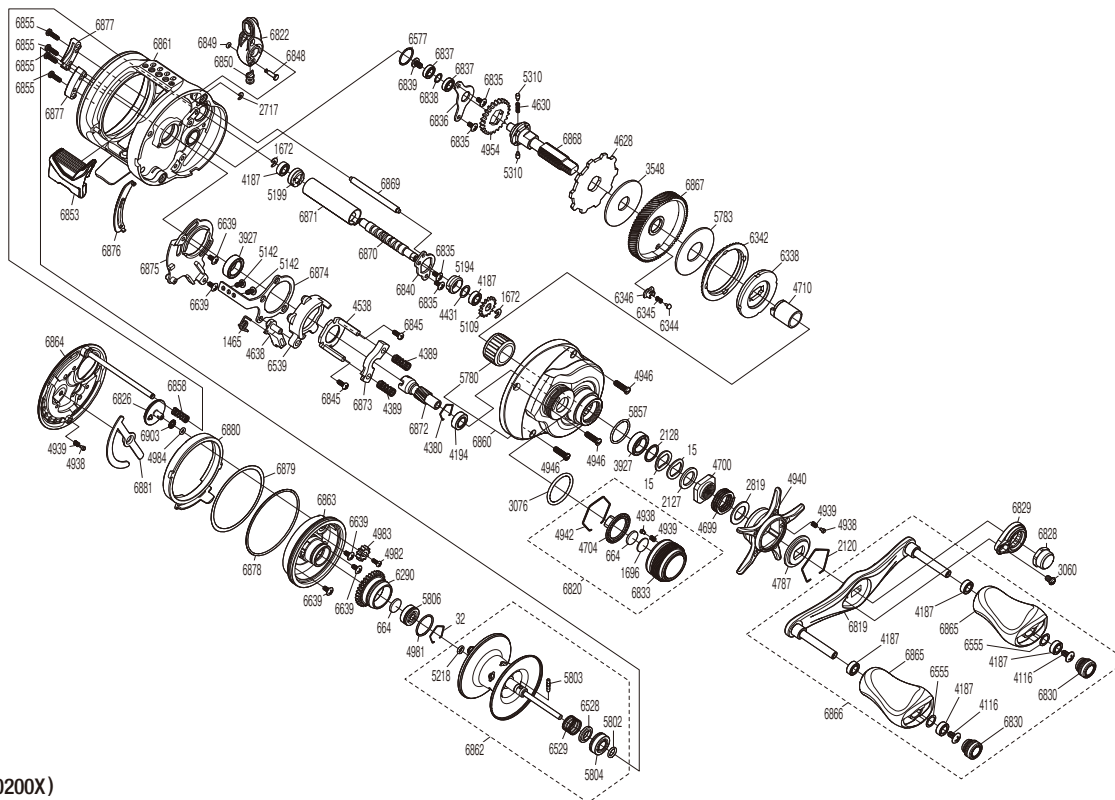


SHIMANO

CALCUTTA CONQUEST

21CQ200



(51RL360200X)

#	Part No.	Description	#	Part No.	Description	#	Part No.	Description
0015	10D60	Drag Spring Washer	4982	10PRT	Screw	6836	100GK	Drive Shaft Retainer
0032	10GEW	Bearing Retainer	4983	10BGM	Br Dial Gear	6837	10SAM	Ball Bearing
0664	10S7S	Washer	4984	10FMT	O Ring	6838	10THF	Washer
1465	10N1Z	Clutch Pawl Spring	5109	10FNX	Idle Gear	6839	10DR4	Screw
1672	10SNC	E Lock	5142	10S59	Screw	6840	10T7S	Worm Bushing Retainer
1696	10896	Cast Control Spacer	5194	10N9Q	Worm Bushing A	6845	101CN	Screw
2120	10KXV	Click Plate Retainer	5199	104SP	Worm Bushing B	6848	100GC	Oscillating Slider Retainer
2127	10J1N	Star Drag Spacer	5218	10EZ7	O Ring	6849	10908	O Ring
2128	105PW	Bearing Washer	5310	10HJG	Idle Gear Pin	6850	100GJ	Line Guide Pawl
2717	105NB	E Lock	5780	1005E	Roller Clutch Bearing	6853	10U0N	Clutch Button Assembly
2819	10HHN	Washer	5783	1027W	Drag Washer	6855	10LVP	Screw
3060	10CZ5	Screw	5802	10TNF	O Ring	6858	107VF	Damper Spring
3076	108W8	O Ring	5803	10MD0	Spool Clutch Pin	6860	101VL	Right Side Plate Assembly
3548	10CHZ	Drag Washer	5804	1005D	Ball Bearing	6861	1027M	Frame Assembly
3927	10EX8	Ball Bearing	5806	10S37	Ball Bearing	6862	101L9	Spool Assembly(With Bearing)
4116	103E9	Screw	5857	1027V	O Ring	6863	1027L	Dial Case Assembly
4187	104VX	Ball Bearing	6290	100N4	Brake Pipe Gear Assembly	6864	101LC	Left Side Plate Assembly
4194	105BP	Ball Bearing	6338	10E9L	Key Washer	6865	10SCX	Handle Knob
4380	1057X	Retainer	6342	10E9B	Drag Click Ratchet	6866	101LU	Handle Assembly
4389	104BU	Yoke Spring	6344	10C0T	Drag Click	6867	101EU	Drive Gear
4431	10G8G	Washer	6345	10J8A	Click Spring	6868	101Q9	Drive Shaft
4538	10F42	Clutch Cam Retainer	6346	10J87	Drag Click Pin Holder	6869	101QD	Level Wind Guide
4628	10D6Y	Anti-Reverse Ratchet	6528	10SWZ	Bushing	6870	101QC	Worm Shaft
4630	10JDX	Idle Gear Spring	6529	10SJF	Bearing Pressure Spring	6871	101G5	Level Wind Guard
4638	105ZU	Clutch Pawl	6539	10SX6	Clutch Cam	6872	101QB	Pinion Gear
4699	10A71	Star Drag Spring	6555	104FH	Washer	6873	101EX	Yoke
4700	10A0B	Star Drag Nut	6577	10SZ4	O Ring	6874	101G3	Clutch Plate
4704	10L2F	Cast Control Click Plate	6639	100BD	Screw	6875	101Q6	Clutch Guard
4710	10BN1	Roller Clutch Inner Tube	6819	100TK	Handle Shank Assembly	6876	101Q7	Clutch Bar Guide
4787	10J1Y	Star Drag Click Plate	6820	10TEE	Cast Control Cap Assembly	6877	101G4	Brake Case Cam
4938	10B27	Click Pin	6822	10TED	Line Guide Pawl Holder Assembly	6878	1014X	O Ring
4939	10988	Click Spring	6826	100TQ	Br Dial Assembly	6879	104H8	Washer
4940	10AU1	Star Drag	6828	100GS	Handle Nut	6880	101Q8	Left Side Plate Cam Lever
4942	10L6X	Cast Control Click Holder	6829	10T7R	Handle Retainer	6881	101QA	Left Side Plate Seal
4946	10C3N	Screw	6830	10T7N	Handle Knob Seal	6903	10SEJ	Washer
4954	10J6W	Idle Gear	6833	10T7H	Cast Control Cap			
4981	10LA8	O Ring	6835	10LVF	Screw	4692	10LQ0	B-100 Oil (Accessory)

Please note that the number of adjusting washers may not be the same as shown in the exploded views. (Adjustment will vary with each individual product.)

(230904)_004