

Economy Riser Systems

Allow access to septic or pump tanks



Clarus Environmental's economy riser systems are injection-molded and exceptionally strong. They are composed of HDPE, which is non-corrodible in the septic environment. The risers are available in 6" (15 cm) heights and can be stacked to fit any application. 12", 20", and 24" (30 cm, 51 cm, and 61 cm) diameter risers and covers are available. 24" (61 cm) diameter riser pans and adapter rings are also available. The 24" (61 cm) riser pan fits anywhere in the riser stack. A handle is included with the riser pan kit, so it can be cast into a concrete lid. Stainless steel screws are provided as part of the hardware pack.

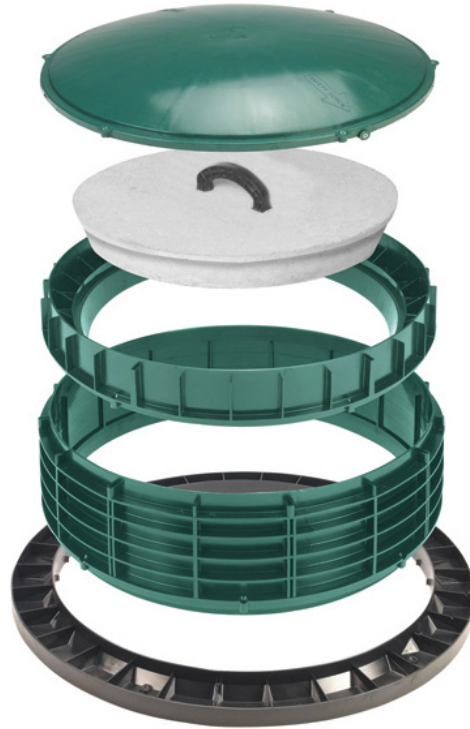
Features

- Green cover blends with grass
- Stackable for versatility
- May be cast in place
- Riser has cutouts for pipe penetration
- Covers include stainless steel screws and molded-in gaskets

Trusted. Tested. Tough.[®]

3649 Cane Run Road • Louisville, KY 40211-1961 • (502) 778-2731 • FAX: (502) 774-3624
clarusenvironmental.com

C5.10.110
CL0004
0419
Supersedes
New



Clarus Economy Risers and covers are injection molded and exceptionally strong. HDPE is noncorrosive in a septic environment. Clarus Economy Risers are available in 6" heights and can be stacked to fit any application.

Economy Risers Systems CL0501	
Part Number	Description
5083-0005	12" x 6" Tuf-Tite riser ext
5083-0007	12" Dia Tuf-Tite cover
5085-0001	20" x 5" Tuf-Tite riser ext
5085-0002	20" Dia Tuf-Tite cover
5086-0001	24" x 6" Tuf-Tite riser ext
5086-0002	24" Dia Tuf- Tite cover
5086-0003	24" Dia Tuf-Tite riser pan
5086-0004	24" Dia Tuf-Tite riser adapter
5086-0005	24" Dia Tuf-Tite flat cover
5080-0001	5/16" x 20' Butyl rope seal
5080-0002	1" x 14' - 6" Butyl rope seal
5080-0003	.375" IPS pipe seal
5080-0004	.50" IPS pipe seal
5080-0005	.75" IPS pipe seal
5080-0006	1.0" IPS pipe seal
5080-0007	1.25" IPS pipe seal
5080-0008	1.50" IPS pipe seal
5080-0009	2.0" IPS pipe seal
5080-0010	3.0" IPS pipe seal
5080-0011	4.0" IPS pipe seal