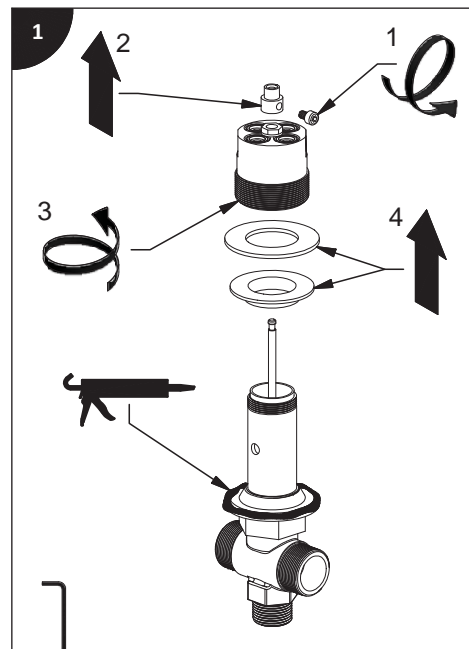
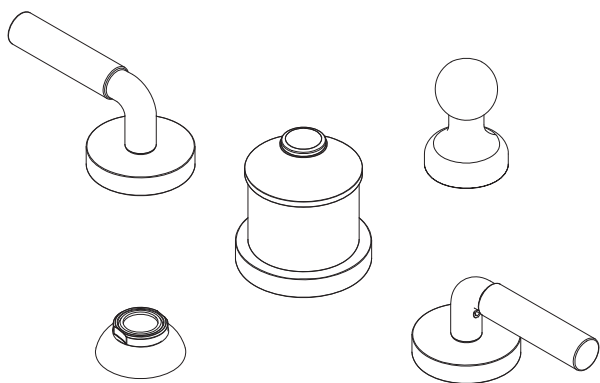
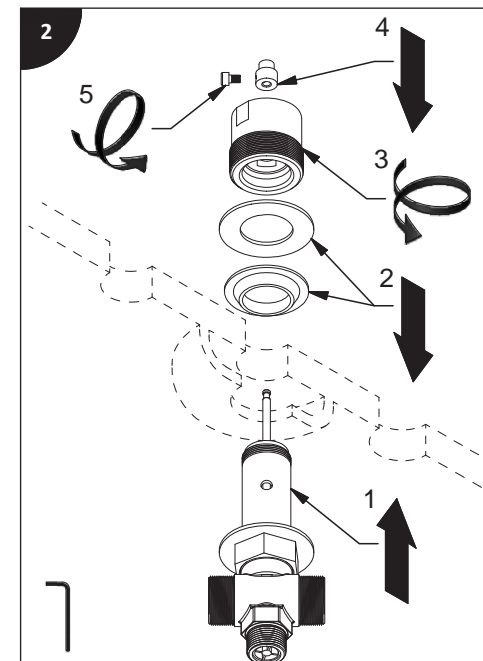




Installation guide / Guide d'installation / Guía de instalación



DISASSEMBLE IN THE ORDER SHOWN
DÉSASSEMBLER DANS L'ORDRE INDIQUÉ
APRETAR EN EL ORDEN INDICADO



INSTALL IN THE ORDER SHOWN
INSTALLER DANS L'ORDRE INDIQUÉ
APRETAR EN EL ORDEN INDICADO

Before beginning the installation:

Read all instructions.

Purge the water supply system before connecting it to the faucet.

Avant de commencer l'installation:

Lire toutes les instructions.

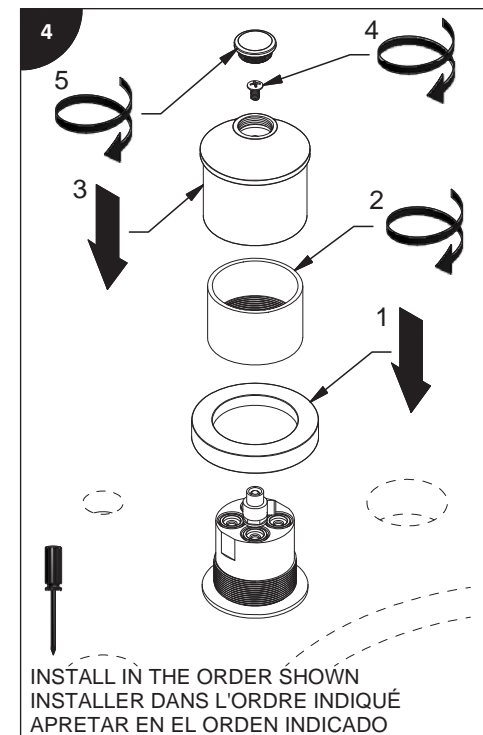
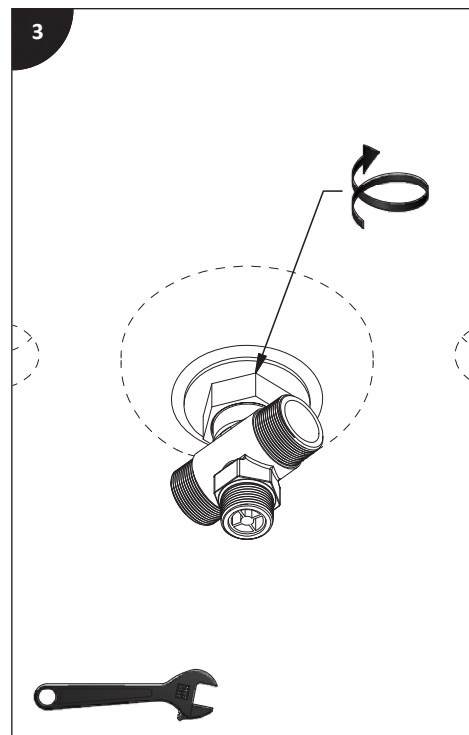
Purger votre système d'alimentation d'eau avant d'effectuer le branchement au robinet.

Antes de iniciar la instalación:

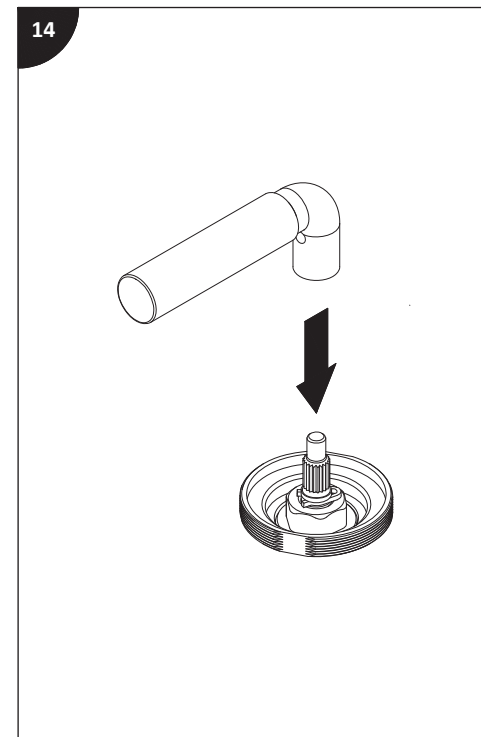
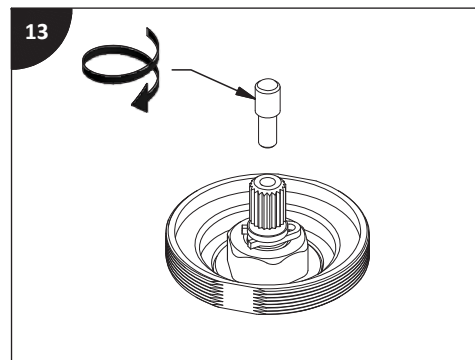
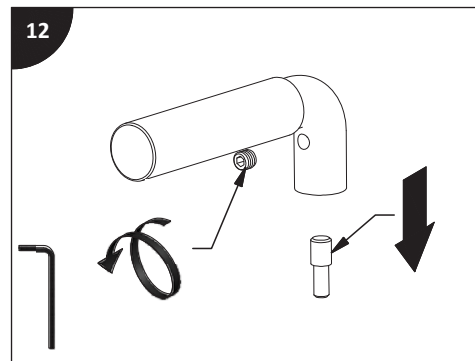
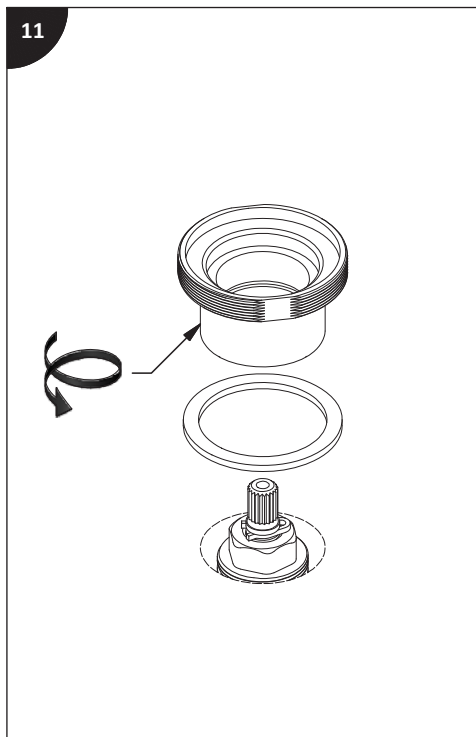
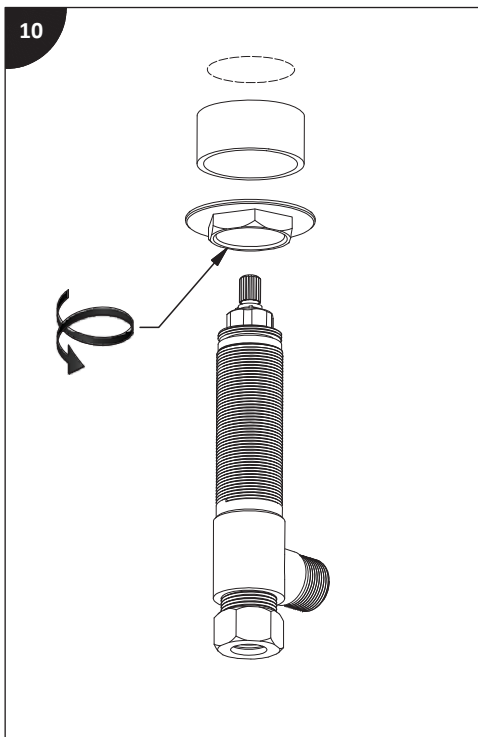
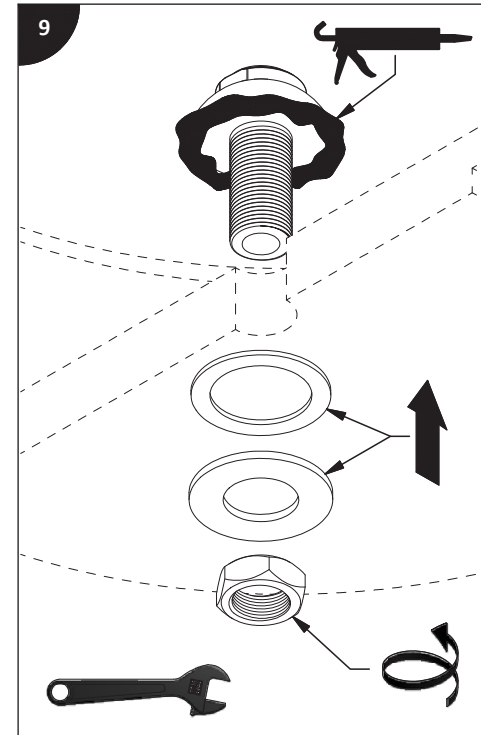
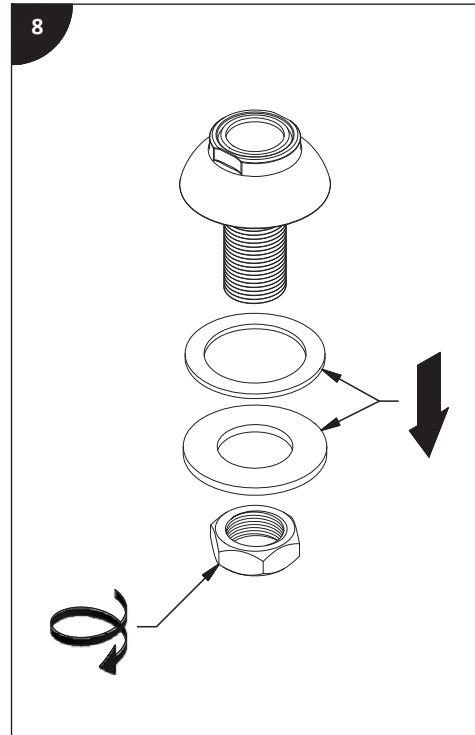
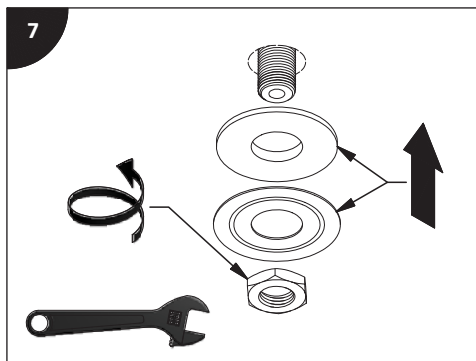
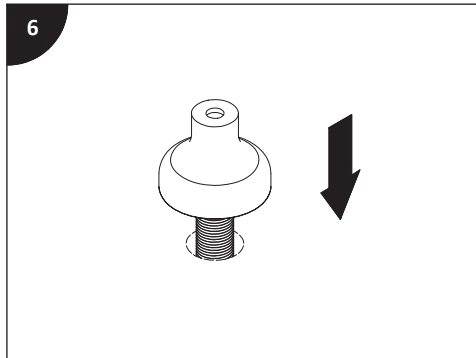
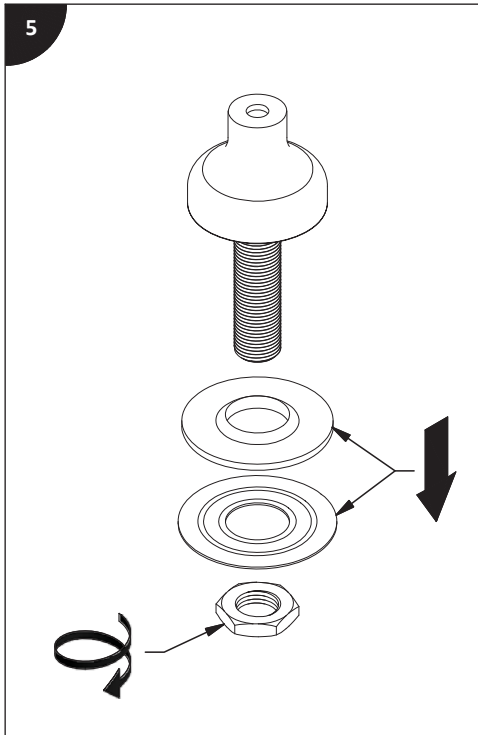
Lea todas las instrucciones.

Es necesario purgar previamente su sistema de alimentación de agua para efectuar la conexión del grifo.

Tools and equipment required / Outils et matériels requis / Herramientas y material requerido de instalación :

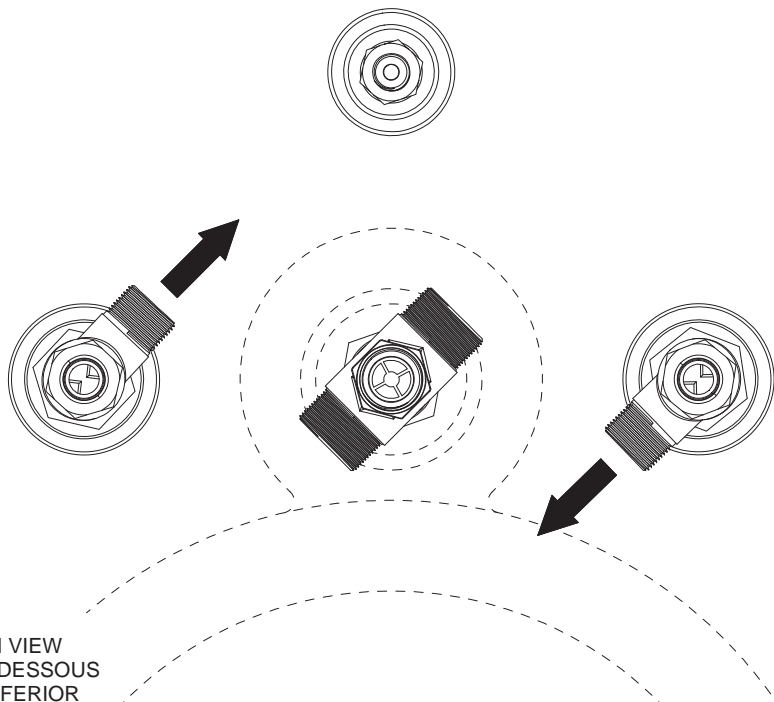


INSTALL IN THE ORDER SHOWN
INSTALLER DANS L'ORDRE INDIQUÉ
APRETAR EN EL ORDEN INDICADO



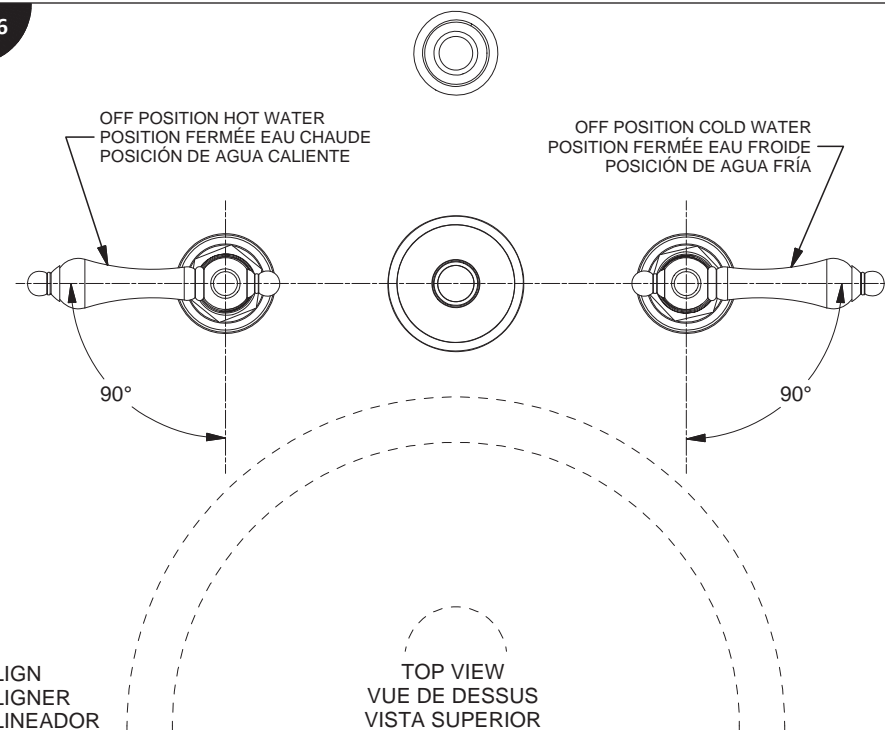
15

BOTTOM VIEW
VUE DE DESSOUS
VISTA INFERIOR



16

ALIGN
ALIGNER
ALINEADOR

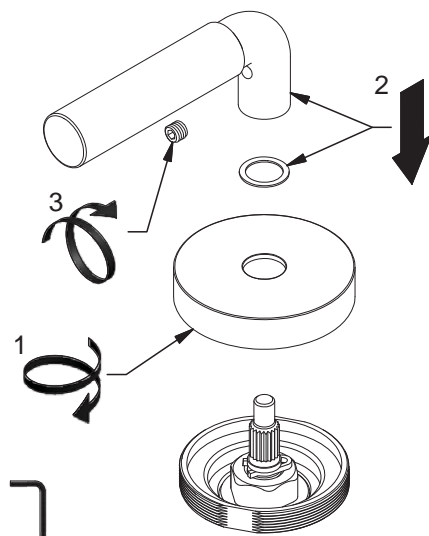


17



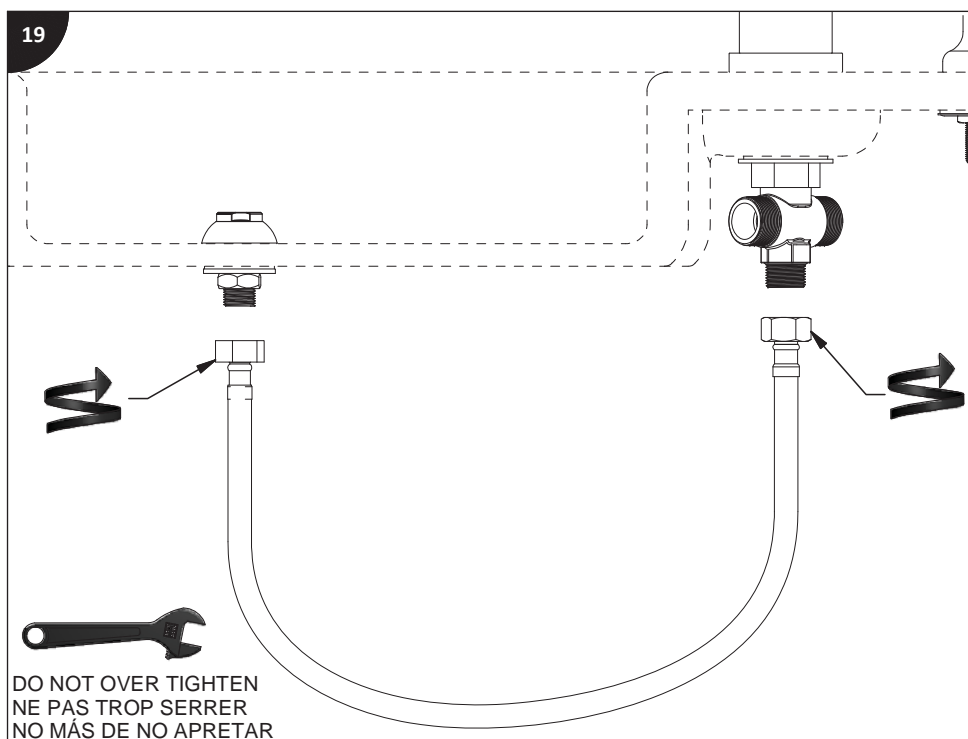
18

INSTALL IN THE ORDER SHOWN
INSTALLER DANS L'ORDRE INDiqué
APRETAR EN EL ORDEN INDICADO

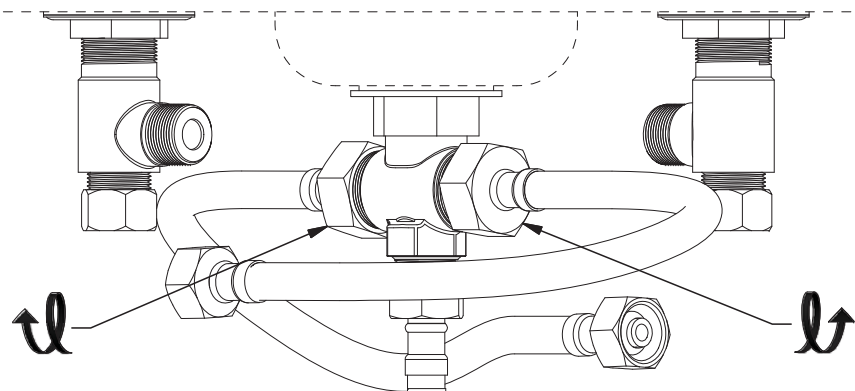


19

DO NOT OVER TIGHTEN
NE PAS TROP SERRER
NO MÁS DE NO APRETAR

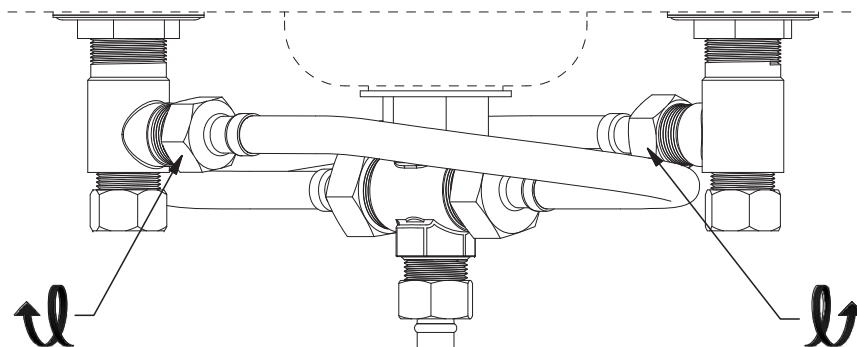


20



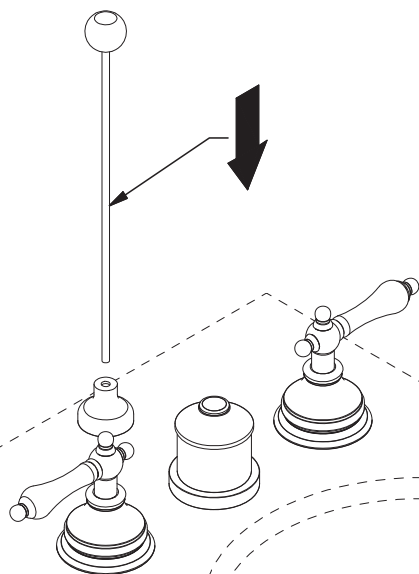
DO NOT OVER TIGHTEN
NE PAS TROP SERRER
NO MÁS DE NO APRETAR

21

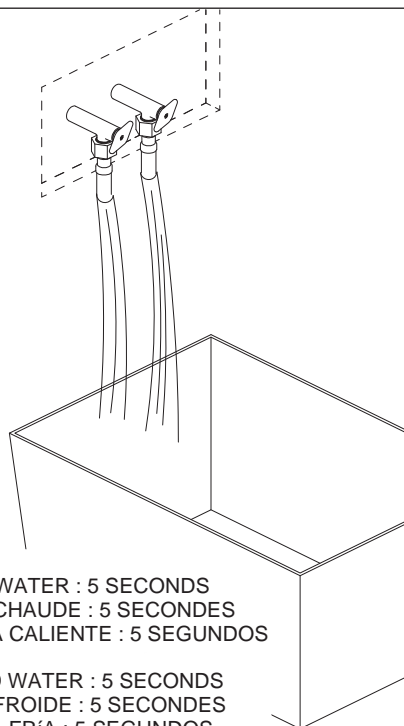


DO NOT OVER TIGHTEN
NE PAS TROP SERRER
NO MÁS DE NO APRETAR

22

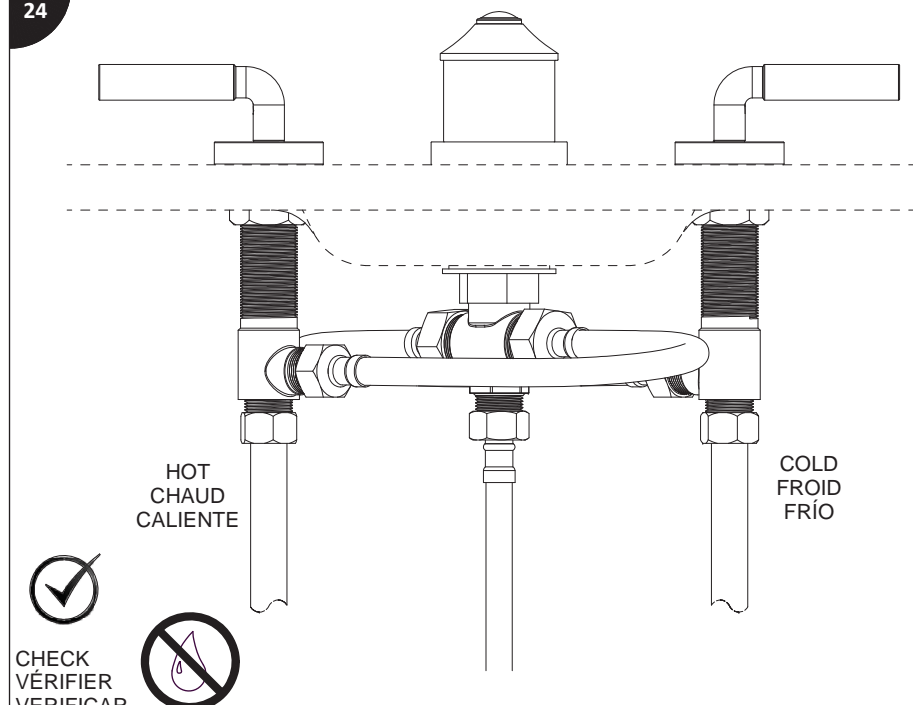


23



1.
HOT WATER : 5 SECONDS
EAU CHAUDE : 5 SECONDES
AGUA CALIENTE : 5 SEGUNDOS
2.
COLD WATER : 5 SECONDS
EAU FROIDE : 5 SECONDES
AGUA FRÍA : 5 SEGUNDOS

24



HOT
CHAUD
CALIENTE

COLD
FROID
FRÍO

✓
CHECK
VÉRIFIER
VERIFICAR

