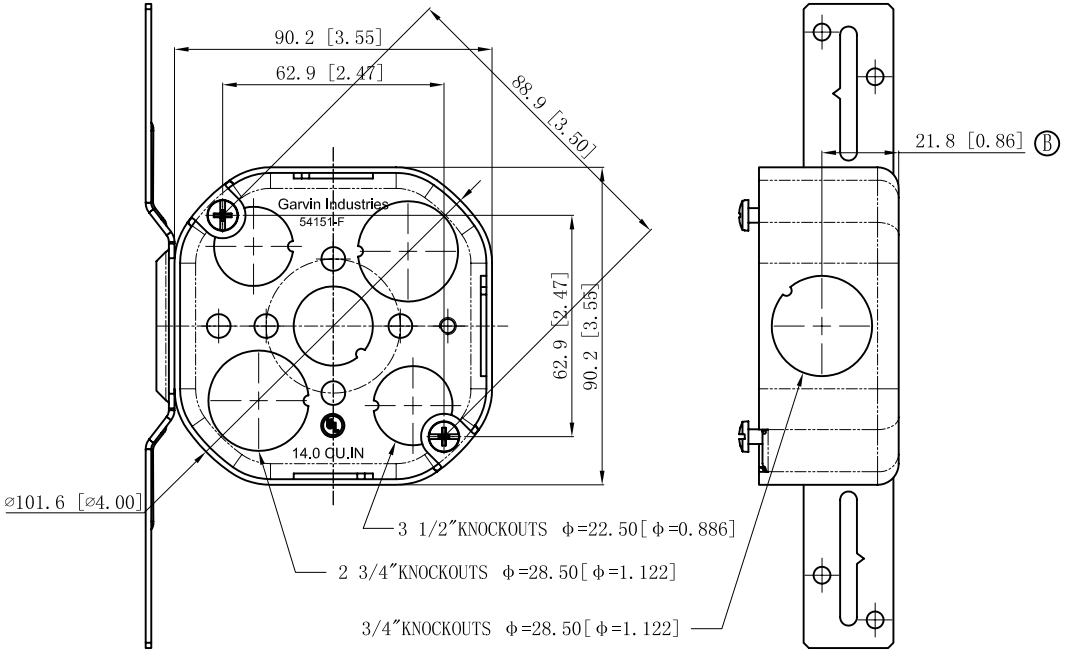
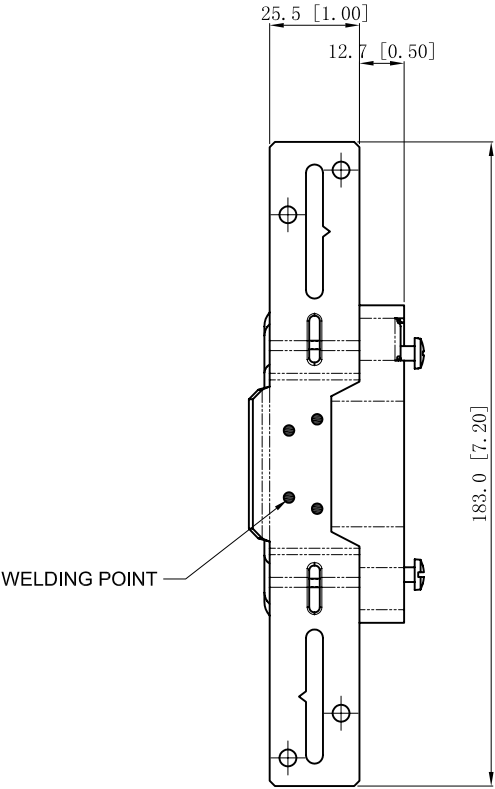
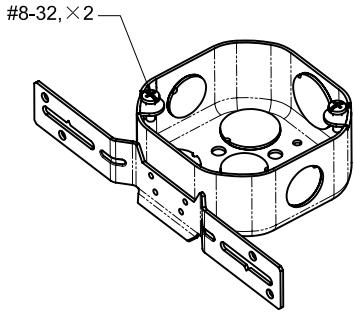
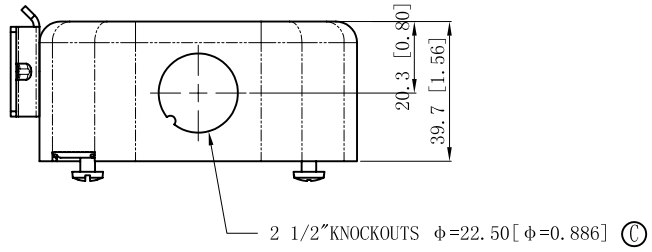


SIDES	BOTTOM
2 1/2" KNOCKOUTS	3 1/2" KNOCKOUTS
3/4" KNOCKOUTS	2 3/4" KNOCKOUTS
2 PCS 8-32x1/2 Screws Installed	
Material: Steel-0.0625"-G60 Galvanized	



DESCRIPTION
TRADE REFERENCE TERMS

This data sheet is for reference only. GARVIN INDUSTRIES reserves the right to make changes to the design without prior notice.

STANDARD PACKING
25 PCS

TITLE		GARVIN INDUSTRIES	
TITLE		4" OCTAGON BOXES 1-1/2" DEEP	
SIZE	DWG NO.	54151-F	REV
A4			D
DATA SHEET			