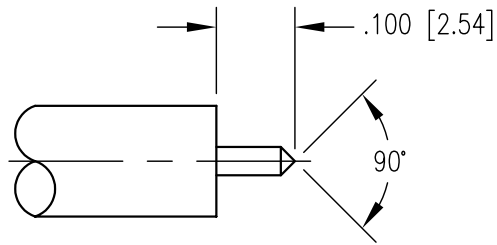
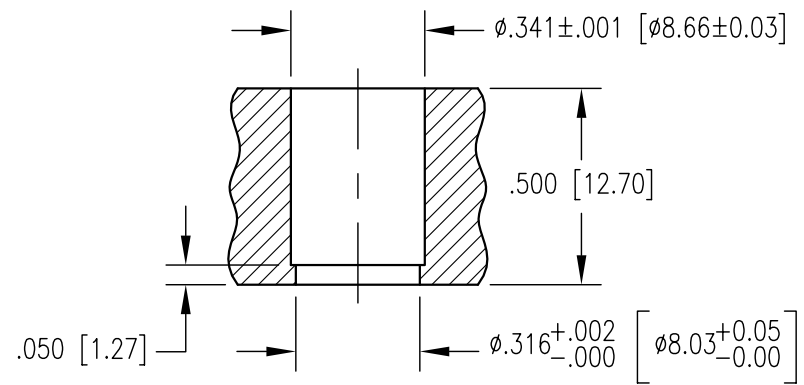
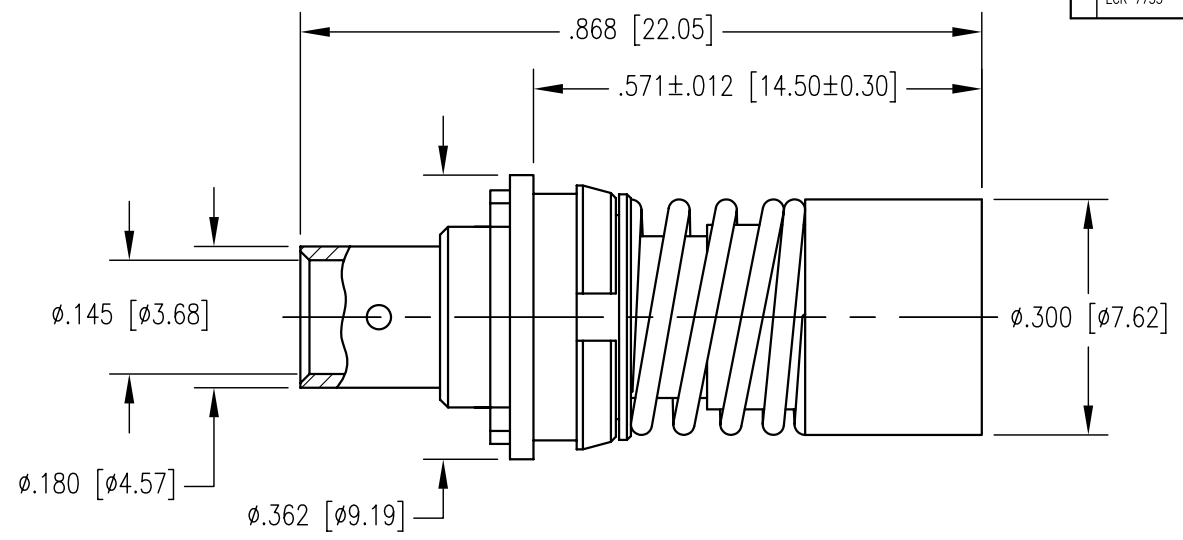


REV	DESCRIPTION	BY DATE	APPD
A	RELEASED PER ECR 7733	JED 7/8/02	JEM



CABLE TRIMMING DIMENSIONS



RECOMMENDED MOUNTING HOLE (1/2 SCALE)

NOTES:

- MATERIALS:  
 INSULATOR: TEFLON PER ASTM D1710  
 SPRING: MUSIC WIRE PER ASTM A228  
 CLIP RING AND CONTACTS: COPPER ALLOY  
 C-RING: SPRING STEEL  
 ALL OTHER METAL PARTS: BRASS PER ASTM B16
- FINISH:  
 BODY AND MOUNTING SLEEVE: .000015 MIN. GOLD PER MIL-G-45204 OVER  
 .000050 MIN. NICKEL PER QQ-N-290  
 CONTACTS AND SHROUD: .000030 MIN. GOLD PER MIL-G-45204 OVER  
 .000050 MIN. NICKEL PER QQ-N-290  
 C-RING: .000005 MIN. GOLD PER MIL-G-45204 OVER  
 .000050 MIN. NICKEL PER QQ-N-290  
 CLIP RING: .000100 MIN. NICKEL PER QQ-N-290  
 OVER COPPER FLASH  
 SPRING: UNPLATED
- DESIGNED FOR USE WITH .141 DIA. SEMI-RIGID CABLE OR EQUIVALENT.
- FOR CABLING PROCEDURES USE CAP 5-24 WITH TRIMMING DIMENSIONS SHOWN.

PER ASME Y14.5M-1994 UNLESS OTHERWISE SPECIFIED: DIMENSIONS ARE IN INCHES [MM] TOLERANCES: DECIMALS .XX ± .01 [0.254] .XXX ± .005 [0.127] ANGLES ± 2° SCALE: 4:1		<b>NORTHROP GRUMMAN</b>  Winchester Electronics 62 Barnes Industrial Road North Wallingford, CT 06492	
<b>CUSTOMER DRAWING</b>		TITLE BMA STRAIGHT RECEPTACLE (SNAP-FIT)	
DRAWN JED	DATE 8/14/02	CHECKED JWH	DATE 9/5/02
APPROVED JEM	DATE 9/5/02	APPROVED MG	DATE 9/5/02
<b>A</b>		SD361-522-1410H	SHT. 1 OF 1 REV. A