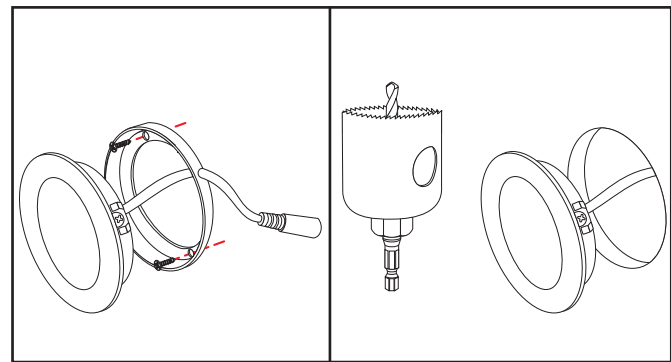
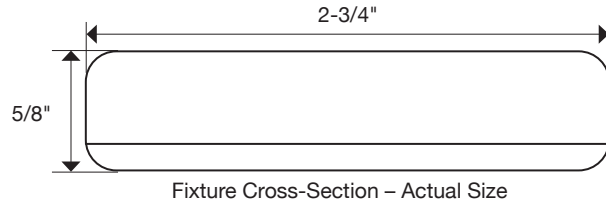


Black fixture shown
with frosted lens
L-PS-FR-3BK-30



Surface mount

Or recess mount

MEDIUM LIGHT OUTPUT – 3 WATTS PER FIXTURE

PART NUMBER	DESCRIPTION	DIMENSIONS	LUMENS PER FIXTURE Based on 4000K (approx. per fixture)	TOTAL WATTS PER FIXTURE	KELVIN TEMPERATURE
L-PS-FR-3Color-Temp	LED puck light designed for surface or recess mount	2-3/4" x 2-3/4" x 5/8"	180	3	2700K (27) 3000K (30) 4000K (40) 5000K (50)

Blue indicates customer choice. Color indicates Finish Color. Temp indicates Kelvin Temperature.
L-PS-FR-3WT-30 (Example part number for Pearl Series puck light with White housing in 3000K)

INSTALLATION COMPONENTS

PART NUMBER	DESCRIPTION	OUTSIDE DIAMETER
T-CW20G-STR-25	25 ft. spool of 20/2 AWG stranded wire	9/64"
T-CW20G-STR-50	50 ft. spool of 20/2 AWG stranded wire	9/64"
T-CW20G-STR-100	100 ft. spool of 20/2 AWG stranded wire	9/64"
T-CW20G-STR-1	20/2 AWG stranded wire sold per foot	9/64"

FINISH OPTIONS



FEATURES

- 21 diodes per fixture
- Includes 2 lenses: frosted and diamond
- Fully assembled fixture with female plug for easy installation
- 90 CRI (Color Rendering Index – true color)
- Simple surface or recess mount installation
- 3-year limited warranty
- Designed for indoor application
- No UV or IR
- Dimmable (with compatible dimmer)
- 3 foot lead with end female barrel connector
- 2-1/2" hole saw recommended for recess mount
- 30,000 hour LED life at 70% lumen maintenance
- 12 volt DC plug-in or hardwired power supply required (order separately)

APPLICATIONS

- Interior Cabinet
- Under Cabinet
- Display/Accent
- Over Sink
- Architectural Niche

TECHNICAL INFORMATION

Series	Pearl Series
Input Voltage	12 volt DC
Color Temperature (Kelvin)	Warm white 2700K (27) Soft white 3000K (30) Cool white 4000K (40) Daylight white 5000K (50)
CRI (Color Rendering Index)	90+
LED Type	SMD3014
Lumens	180 lumens per fixture
Max Run	Refer to power supply specs
Cuttable	No
IP Rating	-----
Dimmable	5% – 100%
Rating	cULus Listed
Rated Life	30,000 hrs
LED Beam Angle	Diamond lens – 80° Frosted lens – 120°
LEDs Per Fixture	21
Mounting	Surface or Recess Mount
Recess Mount Hole	2-1/2" hole saw
Wiring	20/2 stranded
Operating Temperature	-13°F to 104°F (-25°C to 45°C)
Environment	Dry location
Construction Material	Aluminum
Warranty	3 years

COMPATIBLE POWER SUPPLIES

PART NUMBER	DESCRIPTION	DIMENSIONS
T-12W-12V-PI	12 watt AC/DC 2 prong plug-in, 12 volt DC 1 AMP.	2-15/16" x 1-3/16" x 1-13/16"
T-24W-12V-PI	24 watt AC/DC 2 prong plug-in, 12 volt DC 2 AMP.	3-11/16" x 1-7/8" x 1-5/16"
T-36W-12V-PI	36 watt AC/DC 2 prong plug-in, 12 volt DC 3 AMP	3-3/4" x 2" x 1-5/16"
T-60W-12V-PI	60 watt AC/DC 2 prong plug-in, 12 volt DC 5 AMP	5-1/8" x 2-1/16" x 1-1/4"
T-96W-12V-PI	96 watt AC/DC 3 prong plug-in, 12 volt DC 8 AMP.	5-1/2" x 2-3/8" x 1-3/8"
T-120W-12V-PI	120 watt AC/DC 3 prong plug-in, 12 volt DC 10 AMP	6-3/8" x 2-11/16" x 1-1/4"
T-60W-12-WP-HW	60 watt, 12 volt IP67 rated waterproof LED hardwired	6-1/2" x 1-5/8" x 1-1/4"
T-150W-12-WP-HW	150 watt, 12 volt IP67 rated waterproof LED hardwired.	7-3/8" x 2-3/8" x 1-1/2"
T-DT24W-12V-HW	24 watt 12 volt DC dimmable class 2 LED hardwired.	13-3/4" x 3" x 1-5/8"
T-DT48W-12V-HW	48 watt 12 volt DC dimmable class 2 LED hardwired	13-3/4" x 3" x 1-5/8"
T-DT60W-12V-HW	60 watt 12 volt DC dimmable class 2 LED hardwired	13-3/4" x 3" x 1-5/8"
T-DT120W-12V-HW	120 watt 12 volt DC dimmable LED hardwired	15" x 3-1/8" x 2-1/2"
T-WAV-60W-PSR	60 watt AC/DC 2 prong plug-in, 12 volt DC 5 AMP with built in smart LED receiver	7-1/4" x 2-7/8" x 1-5/8"
T-320W-12V-HW	320 watt 12 volt indoor industrial hardwired	8-1/2" x 4-1/2" x 2"

COMPATIBLE DIMMING SYSTEMS / SWITCHES

PART NUMBER	DESCRIPTION	DIMENSIONS
T-Q-1Z-WC-RF-Color	Uno 1-Zone LED controller. On / Off / Dimmer. Use with LED Receiver.	2-5/8" x 1-5/16" x 3/8"
T-Q-2Z-WC-RF-Color	Duo 2-Zone LED controller. On / Off / Dimmer. Use with LED Receiver.	2-5/8" x 1-5/16" x 3/8"
T-Q-4Z-WC-RF-Color	Quattro 4-Zone LED controller. On / Off / Dimmer. Use with LED Receiver.	2-5/8" x 1-5/16" x 3/8"
T-TWAV-WR-120	WAV 120 watt smart LED Receiver. Use with a Wireless Controller	4-1/4" x 2-1/4" x 3/8"
T-Q-WR96	96 watt LED Receiver. Use with a Wireless Controller	3-3/8" x 1-1/2" x 13/16"
T-Q-WR240	240 watt LED Receiver. Use with a Wireless Controller.	6-7/16" x 1-7/8" x 15/16"
T-DSS-30W-IR	Infrared (IR) door sensor switch.	3/8" x 1" x 1-1/4"
T-2HDSS-30W-IR	Infrared (IR) door sensor switch with two heads	3/8" x 1" x 1-1/4"
T-MSS-60W	Motion sensor switch	1/2" x 2-1/4"
T-PSS-60W-IR	Infrared (IR) sensor proximity switch.	2-1/4" x 3/8"
T-TDS-60W	LED touch dimmer.	3/8" x 2" x 2"
T-WSS-60W-IR	Infrared (IR) wave sensor switch	2-1/4" x 3/8"
DVLV-600P-Color	600W Diva slide dimmer.	4.69" x 2.94" x 1.31"
T-RS-BK	On / off round switch	15/16"
T-WAV-AC120V-R	WAV 120 volt AC/AC Smart Receiver	1-3/4" x 1-3/4" x 13/16"