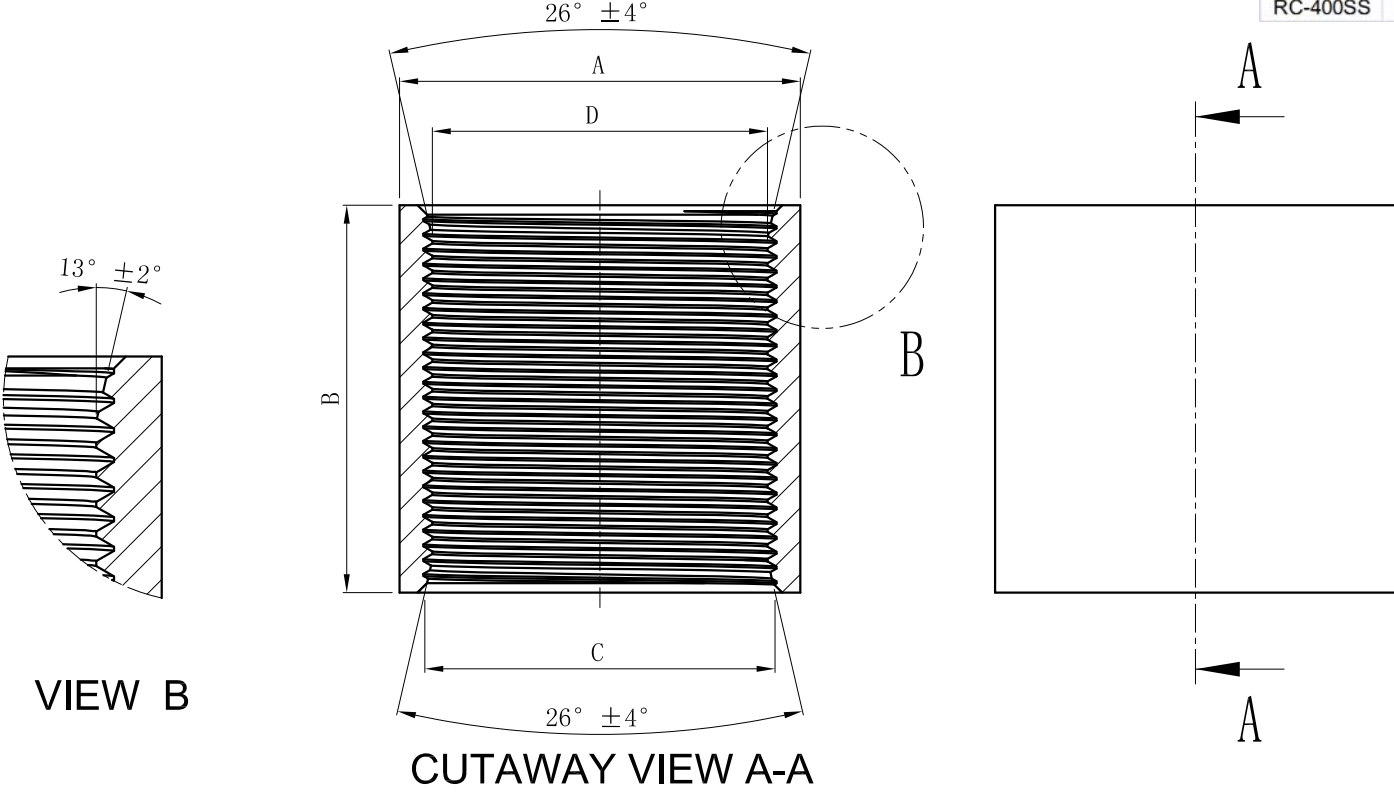


SIDES	BOTTOM
Material:Steel-316 Stainless steel	

P/N	A	B	D	STD.PKG.
RC-50SS	φ25.7 [1.01]	Min 41.3 [1.63]	1/2"-14 NPSM	100PCS
RC-75SS	φ31.8 [1.25]	Min 41.7 [1.64]	3/4"-14 NPSM	100PCS
RC-100SS	φ38.7 [1.52]	Min 50.0 [1.97]	1"-11.5 NPSM	50PCS
RC-125SS	φ47.5 [1.87]	Min 51.6 [2.03]	1 1/4"-11.5 NPSM	50PCS
RC-150SS	φ54.7 [2.15]	Min 52.4 [2.06]	1 1/2"-11.5 NPSM	25PCS
RC-200SS	φ67.3 [2.65]	Min 54.0 [2.13]	2"-11.5 NPSM	25PCS
RC-250SS	φ82.6 [3.25]	Min 81.0 [3.19]	2 1/2"-11.5 NPSM	10PCS
RC-300SS	φ98.3 [3.87]	Min 84.0 [3.31]	3"-8 NPSM	1PCS
RC-350SS	φ114.3 [4.50]	Min 86.5 [3.41]	3 1/2"-8 NPSM	1PCS
RC-400SS	φ123.8 [4.87]	Min 89.3 [3.52]	4"-8 NPSM	1PCS



DESCRIPTION
TRADE REFERENCE TERMS

This data sheet is for reference only .GARVIN INDUSTRIES reserves the right to make changes to the design without prior notice.

STANDARD PACKING	GARVIN INDUSTRIES		
	TITLE THREADED RIGID COUPLING		
	SIZE A4	DWG NO. RC-XXXSS	REV
DATA SHEET			