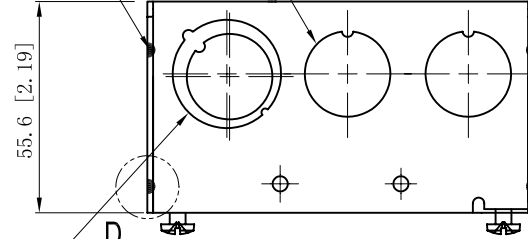


SIDES	BOTTOM
8 1/2" KNOCKOUTS	
4 1/2"-3/4" MOON KNOCKOUTS	
2 PCS 8-32x1/2 Screws Installed	
Material: Steel-0.0625"-G60 Galvanized	

4 1/2" KNOCKOUTS $\phi=22.50$ [$\phi=0.886$]

12 PLACES SPOT WELDING



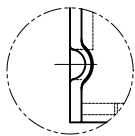
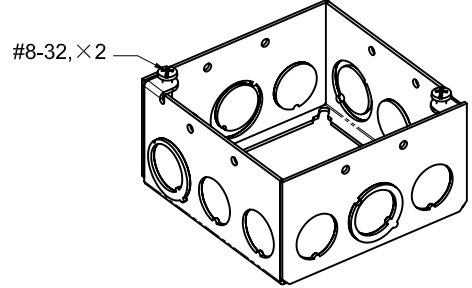
2 1/2"-3/4" MOON KNOCKOUTS $\phi=22.50$ [$\phi=0.886$]
 $\phi=28.50$ [$\phi=1.122$]

D

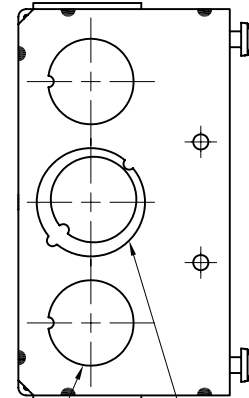
101.6 [4.00]

91.5 [3.60]

2-#8-32 UNC



WELDING STYLE DETAIL VIEW D



101.6 [4.00]

91.5 [3.60]

85.72 [3.375]

Garvin Industries
30.0 CU IN

85.72 [3.375]

121.2 [4.77]

129.4 [5.09]

4 1/2" KNOCKOUTS $\phi=22.50$ [$\phi=0.886$]

2 1/2"-3/4" MOON KNOCKOUTS $\phi=22.50$ [$\phi=0.886$]
 $\phi=28.50$ [$\phi=1.122$]

This data sheet is for reference only. GARVIN INDUSTRIES reserves the right to make changes to the design without prior notice.

DESCRIPTION
TRADE REFERENCE TERMS

STANDARD PACKING
25 PCS

GARVIN INDUSTRIES		
TITLE 4" SQUARE BOXES 2-1/8" DEEP		
SIZE A4	DWG NO. 53171-S	REV B
DATA SHEET		