

SentinelPro™ Trim, Shower and Tub Package (Valve not included)

## MODELS:

- SLV-5050: 2.5 GPM (9.46 L/min) Flow Rate Shower Head
- SLV-5050-E15: 1.5 GPM (5.7 L/min) Flow Rate Shower Head

## FEATURES:

- CPT-5001: Shower Valve Trim
- VS-100-PC: Hand Held Shower with Pause/Trickle Button
- VS-2272-E15 1.5 GPM (5.7 L/min) Single Function Hand Shower
- VS-115: Supply Ell with Wall Flange
- VS-117: Vacuum Breaker
- VS-123: 30 in. Slide Bar
- S-1556: Diverter Tub Spout
- VS-145: 69 in. Metal Stainless Steel Hose

## VALVE OPTIONS:

- CPV-TP2: Thermostatic/Pressure Balancing Valve Sweat & Thread Connections

## STOCK FINISHES:



PC

## STANDARDS:

- ASME A112.18.1/CSA B125.1 certified
- ADA compliant

## WARRANTY:

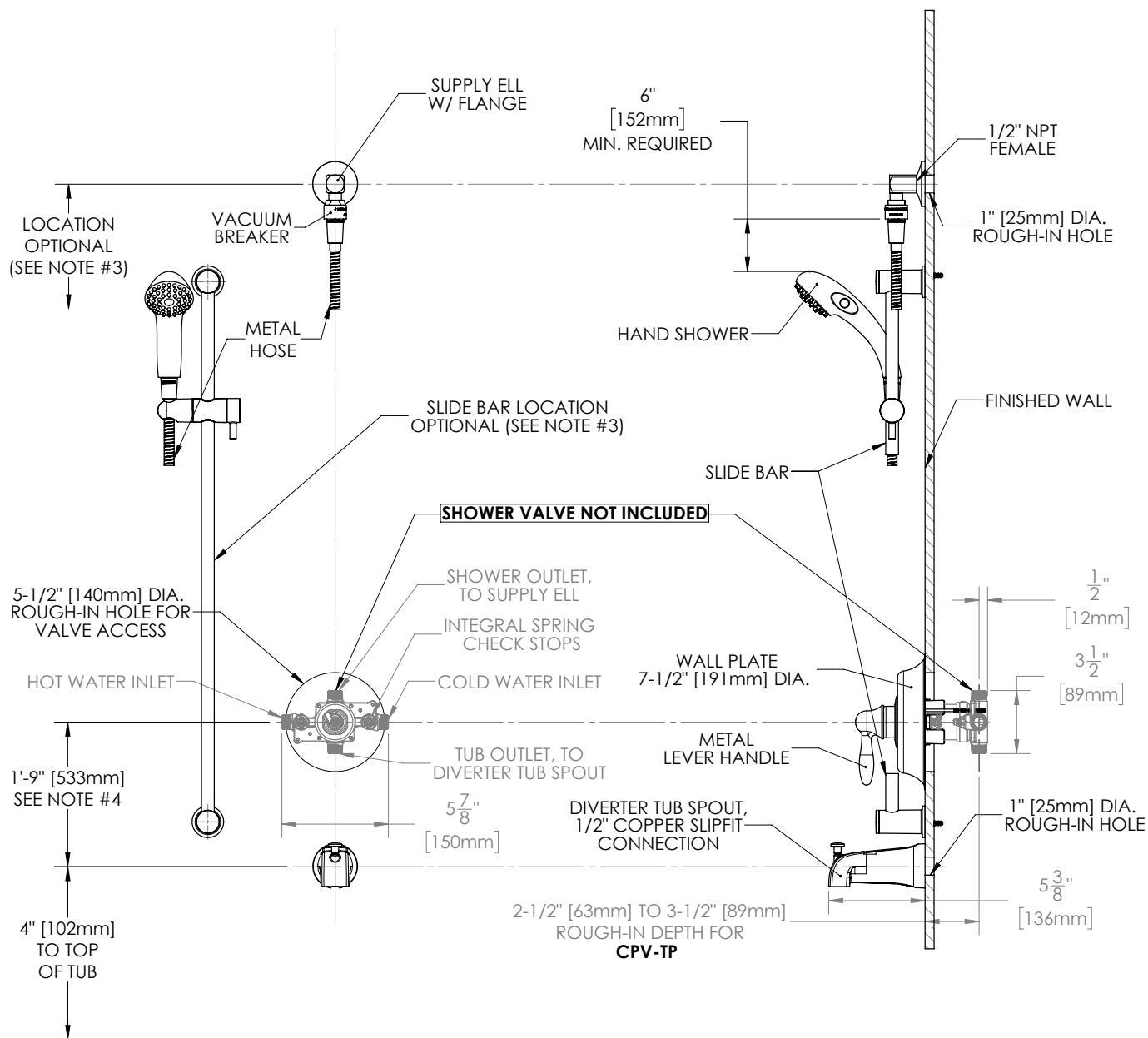
Visit [www.speakman.com](http://www.speakman.com) for full product warranty information

- See [Speakman.com](http://Speakman.com) For Warranty Information



Information continues on next page

## SentinelPro™ Trim, Shower and Tub Package (Valve not included)



### NOTES:

1. ALL DIMENSIONS ARE IN INCHES [MILLIMETERS] UNLESS OTHERWISE SPECIFIED AND ARE SUBJECT TO CHANGE WITHOUT NOTICE.
2. THE LOCATIONS OF THE SLIDE BAR AND SUPPLY ELL ARE OPTIONAL, BUT RESTRICTED BY THE 69" HOSE LENGTH RUNNING FROM THE SUPPLY ELL CONNECTION TO THE HAND SHOWER AND THE 6" MINIMUM REQUIREMENT BETWEEN THE IN-LINE VACUUM BREAKER AND TOP OF THE HAND SHOWER (HAND SHOWER ADJUSTED TO HIGHEST POSITION).
3. FOR ADA MOUNTING LOCATIONS CONSULT ADAAG, ANSI A117.1, OR STATE REGULATIONS.