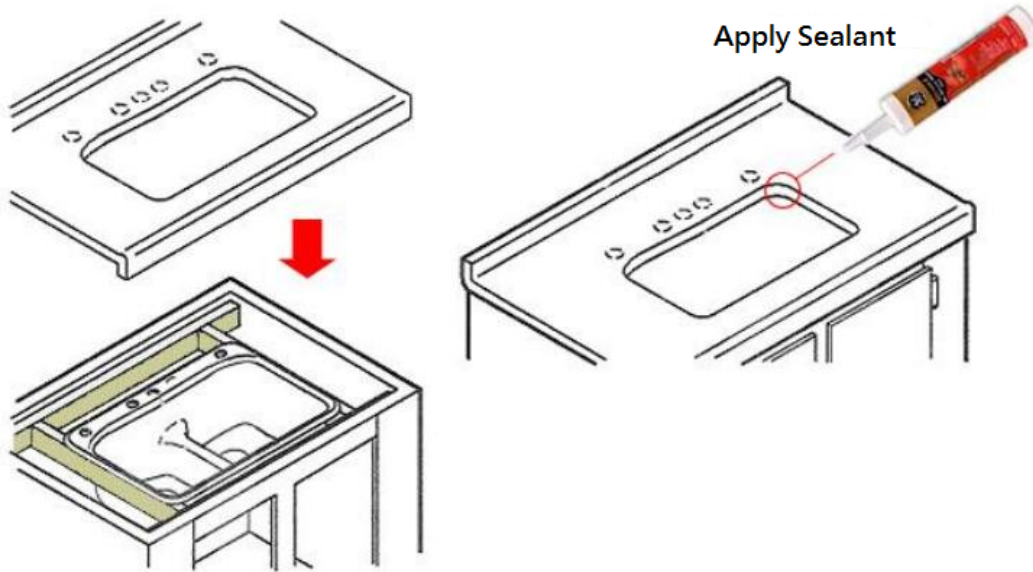
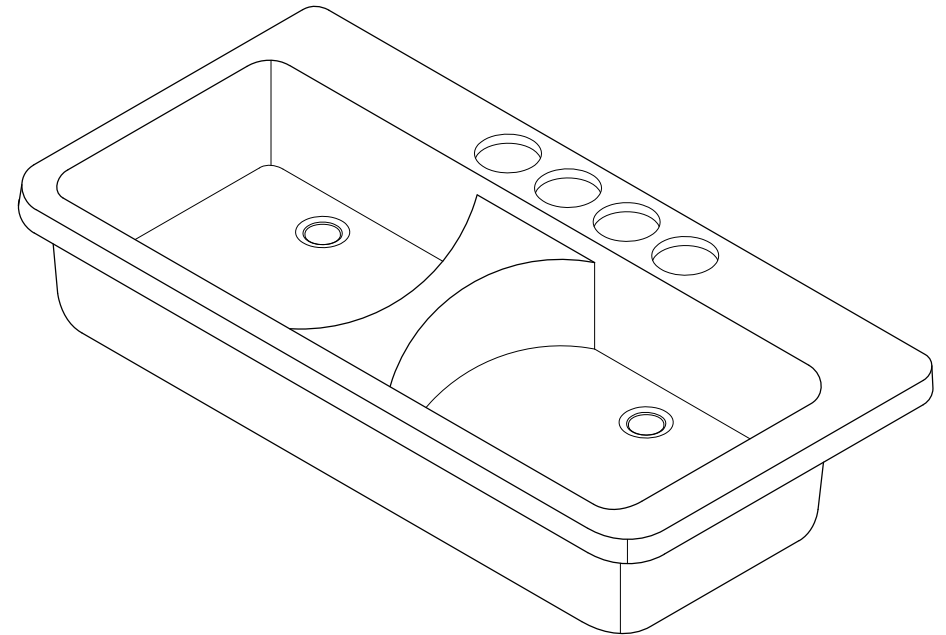


2. Add a thin bead of silicone on the top surface of the wood support structure and place sink on top, it may be necessary to shim it to obtain a tight gap between the sink and the counter.
3. After Counter has been installed seal the gap between the sink and the counter with adhesive caulking.



# KINGSTON GOURMETIER



[www.kingstonbrass.com](http://www.kingstonbrass.com)

TOLL-FREE CUSTOMER SERVICE: 1-877-2-KBRASS

TECHNICAL SUPPORT E-mail: [service@kingstonbrass.com](mailto:service@kingstonbrass.com)

12775 Reservoir Street, Chino, CA 91710

## NOTICE

Failure to follow all directions may cause leaks  
which may result in water damage



## WARNING

### Lifting hazard.

Single person lift could  
cause injury.  
Use assistance when  
moving or lifting.

# GOURMETIER

## Undermount Kitchen Sink Installation Instructions

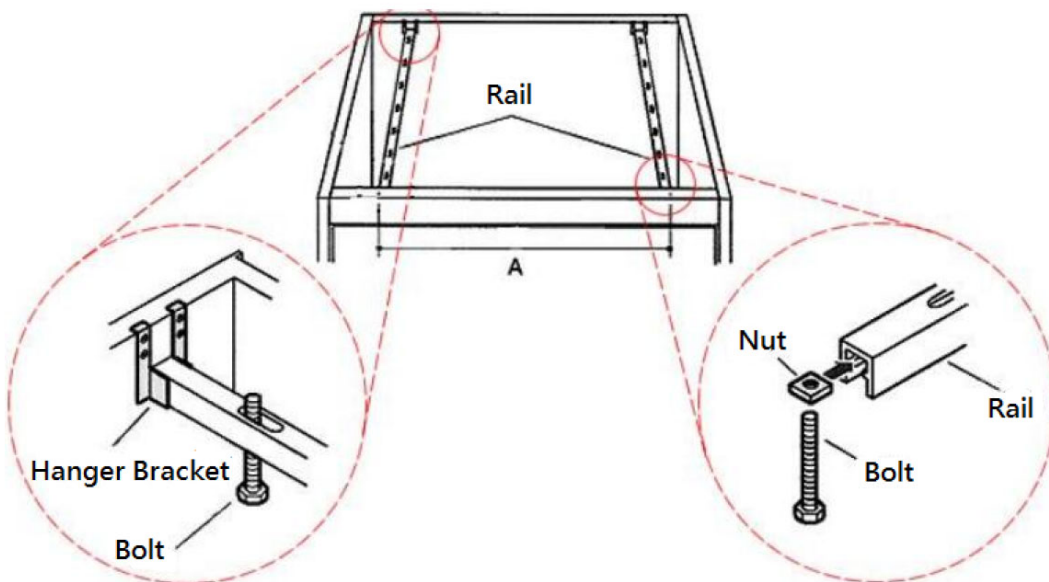
These instructions are for installing KINGSTON Cast Iron Kitchen sinks.

### Note:

- It is recommended that all countertops be cut and installed by an approved or certified professional.
- Thoroughly inspect the product and all materials for any damage prior to installation. Do not install a damaged or defective unit.
- Responsibility with observing all local plumbing and building codes lies with the consumer.
- Warranty will be voided if the product has not been installed and maintained in accordance with all written instructions accompanying the product.
- This sink was designed to be installed as an undercounter sink.
- There are 2 options that you may use to mount this sink; box includes 2 support rails with all the necessary hardware to use them as a support for your sink, the second system of installation will be using 2" x 4" or larger lumber.

### For Option A installation :

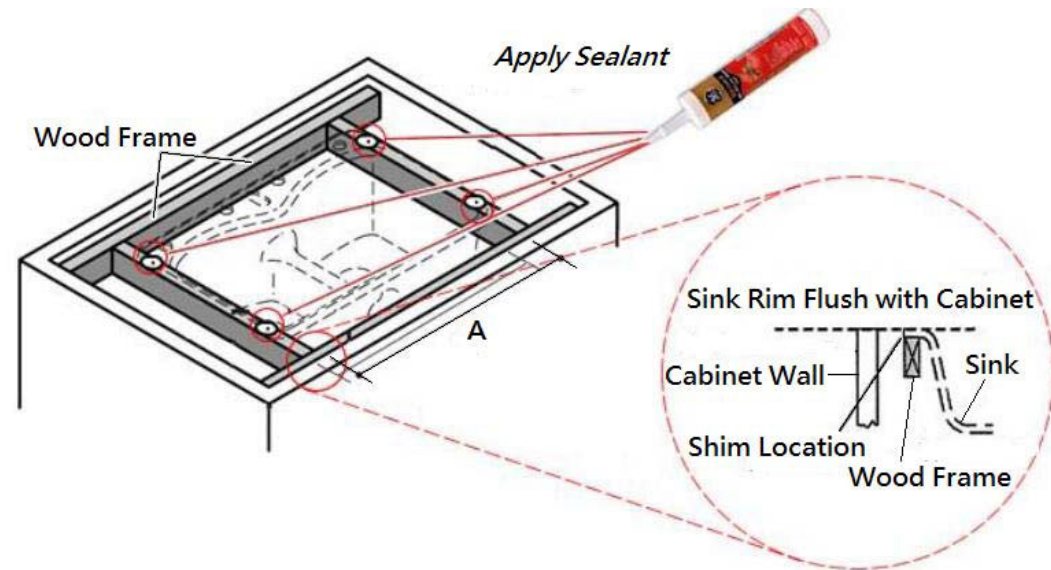
1. Slide nuts on U-Channel and line up with slots on top of U-Channel and thread screws until the screws project from the top of the U-channel, insert rubber bumpers on top of the screws.



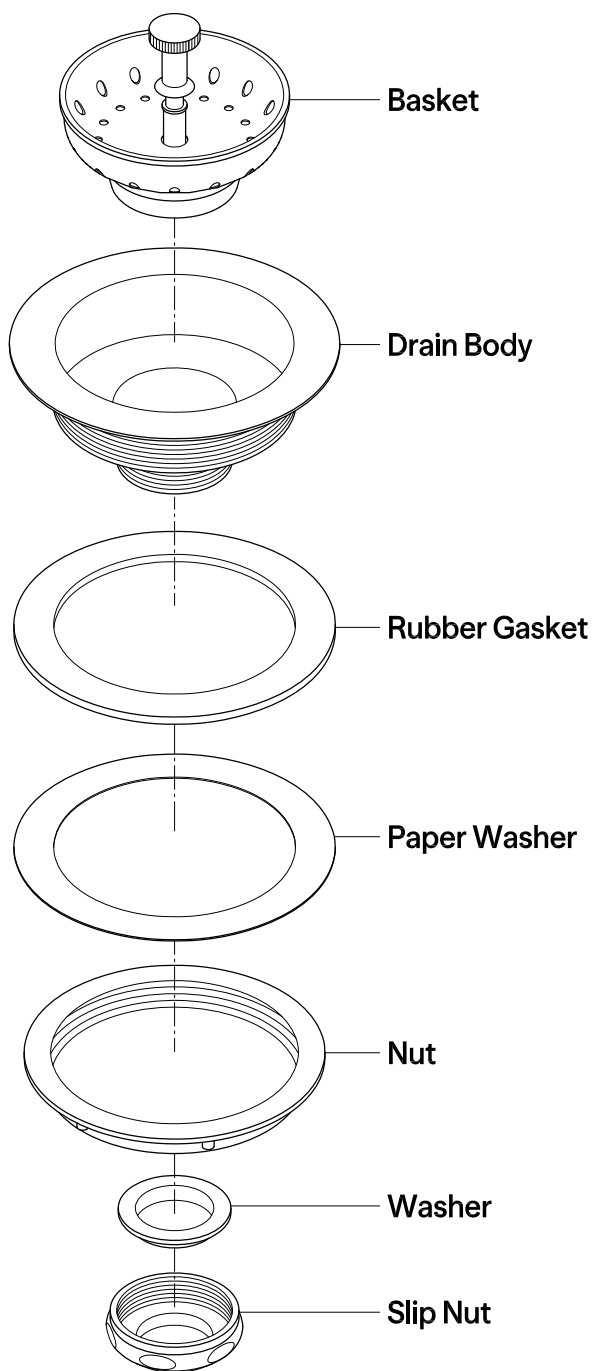
2. Measure width of sink and securely attach the hanger brackets so the U-Channel supports will sit parallel at a distance just inside the outer edges of the sink and insert the U-Channel support into the hanger brackets.
3. Place sink on top of the U-channel supports, adjust height by tightening or loosening the screws on the U-Channel supports.
4. After Counter has been installed seal the gap between the sink and the counter with adhesive caulking.

### For Option B installation :

1. Carefully measure the thickness of the sink at the lip and build a support structure using 2" x 4" or larger lumber and secure to the inside of the cabinet so that the top of the support structure can accommodate the thickness of the sink under the counter.



**NOTE:USE TEFLON TAPE ON ALL THREADED CONNECTIONS**



## **NOTICE**

Failure to follow all directions may cause leaks  
which may result in water damage

[www.kingstonbrass.com](http://www.kingstonbrass.com)

TOLL-FREE CUSTOMER SERVICE: 1-877-2-KBRASS

TECHNICAL SUPPORT E-mail: [service@kingstonbrass.com](mailto:service@kingstonbrass.com)

12775 Reservoir Street, Chino, CA 91710