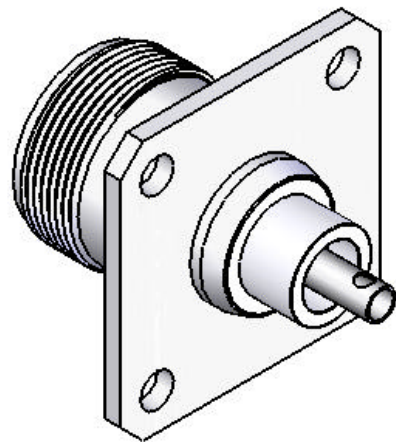
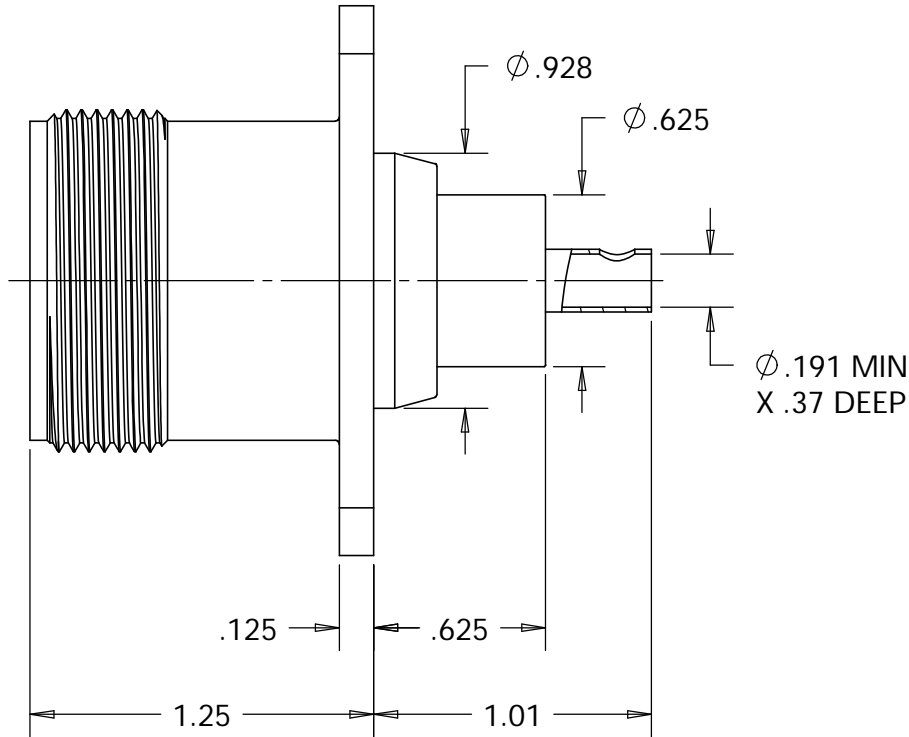
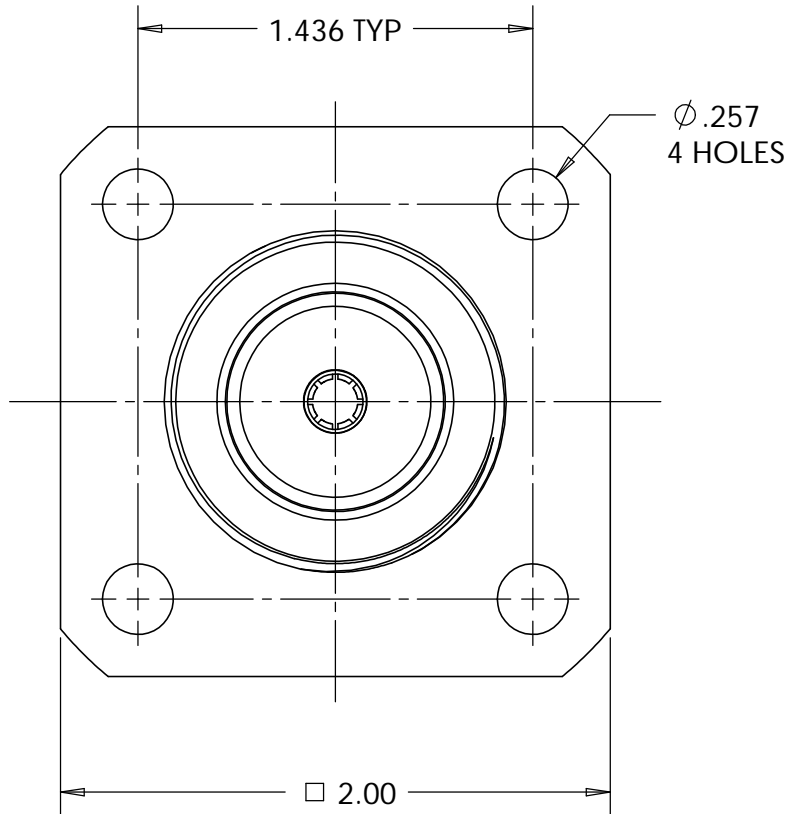


This document, including the design, configuration and mechanical features revealed herein are the sole, confidential and proprietary property of TRU Corporation. Reproduction or use thereof, in whole or part, is prohibited without the prior written consent of TRU Corporation.

REV.	DESCRIPTION	DATE	APPROVED
-	ORIGINAL ISSUE	8/15/07	WWW



ISOMETRIC VIEW
SCALE 1:1




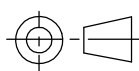
ENGINEERING DATA:

MECHANICAL:
INTERFACE: LC(f) PER MIL-STD-348A, FIG. 315.2
(CLOSED ENTRY CONTACT)

MATERIAL:
INSULATOR: PTFE (TEFLON) PER ASTM-D1710, I1A
CONTACT: BERYLLIUM COPPER C17300, TD04 (H) PER ASTM-B196
BODY: BRASS C36000, H02 PER ASTM-B16

FINISH:
CONTACTS: SILVER PLATED
BODY: NICKEL PLATED

NOTES:
1. UNLESS OTHERWISE SPECIFIED; ALL
DIMENSIONS ARE REFERENCE ONLY.
2. PRODUCT COMPLIES WITH ROHS DIRECTIVE 2002/95/EC.

MATERIAL	DO NOT SCALE DRAWING	DRAWN Warren Whitten	DATE 8/7/07	<div><div>TRU CORPORATION 245 LYNNFIELD STREET, PEABODY, MA 01960</div><div>The Custom Interconnect Leader™</div></div>			
	UNLESS OTHERWISE SPECIFIED: DIMENSIONS ARE IN INCHES TOLERANCES: FRACTIONS: ±1/64 .XX : ±.01 .XXX: ±.005 ANGLES: ±1/2° MACHINED SURFACES: 63/	ENG APPR. AM	DATE 8/10/07	TITLE: CONNECTOR, COAXIAL, RF LC(f) RECEPTACLE, PANEL			
		MFG APPR.	DATE				
		OTHER APPR. RMK	DATE 8/14/07				
COMMENTS:	THIRD ANGLE PROJECTION 	SIZE B		DWG. NO. TRU-15040		REV -	
		CAGE CODE: 92180		SCALE: 1.5:1	SHEET 1 OF 1		
surface area: sq inch		weight: lbs					