

⚠ WARNING

To reduce the risks associated with vibration:

- If any physical hand/wrist discomfort is experienced, work should be stopped promptly to seek medical attention. Hand, wrist and arm injury may result from repetitive work, motion and overexposure to vibration.

To reduce the risks associated with loud noise:

- Always wear hearing protection while operating this tool. Follow your employer's safety policy or local/national standards for personal protective equipment requirements.

To reduce the risks associated with fire or explosion:

- Do not operate the tool in explosive atmospheres, such as in the presence of flammable liquids, gases, or dust. The abrasives are able to create sparks when working material, resulting in the ignition of the flammable dust or fumes.
- Refer to MSDS of material being worked as to potential for creating fire or explosion hazard.

To reduce the risks associated with hazardous dust ingestion or eye/skin exposure:

- Use appropriate respiratory and skin protection, or local exhaust as stated in the MSDS of the material being worked on.

To reduce the risks associated with hazardous voltage:

- Do not allow this tool to come into contact with electrical power sources as the tool is not insulated against electrical shock.

⚠ CAUTION

To reduce the risks associated with skin abrasion, burns, cuts, or entrapment:

- Keep hands, hair, and clothing away from the rotating part of the tool.
- Wear suitable protective gloves while operating tool.
- Do not touch the rotating parts during operation for any reason.
- Do not force tool or use excessive force when using tool.

To reduce the risks associated with whipping or hazardous pressure-rupture:

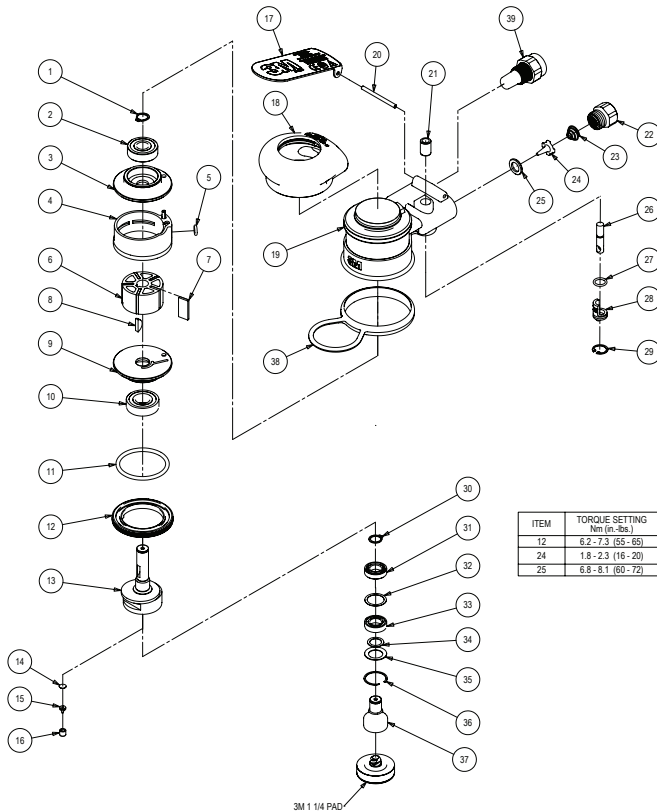
- Ensure supply hose is oil resistant and is properly rated for required working pressure.
- Do not use tools with loose or damaged air hoses or fittings.

- Be aware that incorrectly installed hoses and fittings might unexpectedly come loose at any time and create a whipping/impact hazard.

To reduce the risks associated with fly off of abrasive product or parts:

- Use care in attaching abrasive product and disc pad; following the instructions to ensure that they are securely attached to the tool before use.
- Never free spin the tool or otherwise allow it to be started unintentionally.
- Never point this product in the direction of yourself or another person, or start tool unintentionally.
- Never over-tighten accessory fasteners.

Parts Page



ITEM	TORQUE SETTING Nm (ft.-lbs.)
12	6.2 - 7.3 (55 - 65)
24	1.8 - 2.3 (16 - 20)
25	6.8 - 8.1 (60 - 72)

Parts List

ITEM NUMBER	DESCRIPTION	3M P/N	3M UPC P/N	QUANTITY
1	EXTERNAL RETAINING RING	A0040	28133	1
2	6000ZZ BEARING - 2 SHIELDS	A0021	28107	1
3	REAR END PLATE	B0017	28173	1
4	CYLINDER ASSY	A0005	28094	1
5	5.0 mm x 2.0 mm O-RING	A0042	28115	1
6	MACHINED ROTOR	B0005	28170	1
7	VANE	A0010	28099	5
8	WOODRUFF KEY	A0041	28114	1
9	FRONT END PLATE	B0016	28172	1
10	6001ZZ BEARING - 2 SHIELDS	A0019	28106	1
11	40.0 mm x 3.5 mm O-RING	A0045	28118	1
12	LOCK RING	A0001	28093	1
13	SHAFT BALANCER	B0405	28305	1
14	FILTER	A0122	28132	1
15	ONE WAY VALVE	A0121	28131	1
16	RETAINING SLEEVE	A0120	28130	1
17	LEVER	A1873	28306	1
18	GRIP 2 ½ in.	20342	20342	1
18	GRIP 2 ¾ in.	20343	20343	OPT
18	GRIP 3 in.	20344	20344	OPT
19	MINI HOUSING	A1872	28307	1
20	LEVER SPRING PIN	A0031	28109	1
21	VALVE SLEEVE	A0015	28102	1
22	INLET BUSHING ASSY	A0013	28100	1
23	VALVE SPRING	A0014	28101	1
24	VALVE	A0007	28096	1
25	VALVE SEAT	A0009	28098	1
26	VALVE STEM ASSY	A0008	28097	1
27	9.0 mm x 1.5 mm O-RING	A0043	28116	1
28	FLUSH SPEED CONTROL	A0380	28310	1
29	INTERNAL RETAINING RING	A0039	28112	1
30	RETAINING RING	A0107	28128	1
31	BEARING - NO SEALS/SHIELDS	A0149	28311	1
32	SPACER 0.2 in. THK	A0199	28312	1
33	BEARING, 2 SEALS	A0150	28313	1
34	SHIM 0.2 in. THK	A0108	28129	1
35	BELLEVILLE WASHER	A0109	28314	1
36	RETAINING RING	A0119	28315	1
37	SPINDLE	B0406	28316	1
38	HANGER	B0442	28317	1
39	MUFFLER	A1991	28308	1