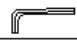



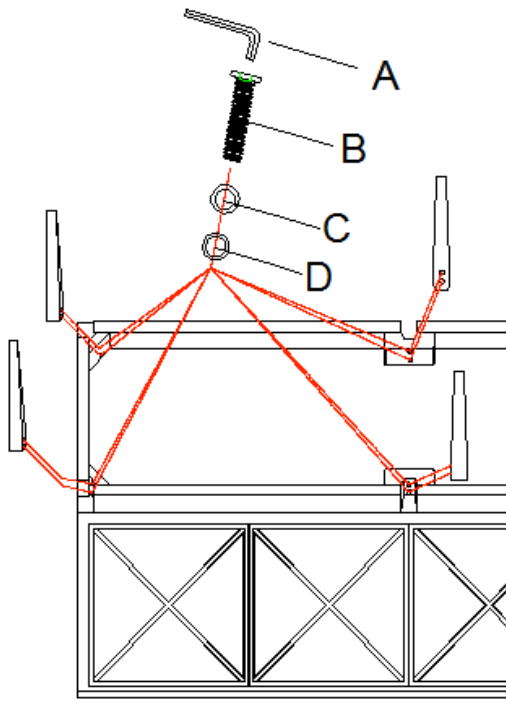
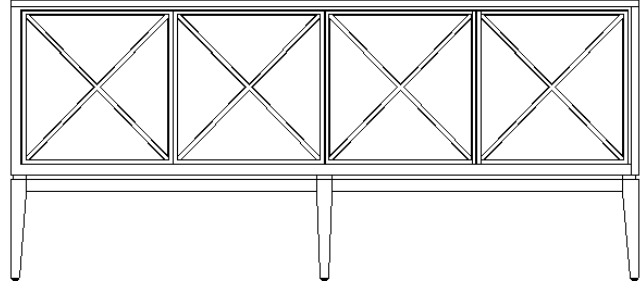


ASSEMBLY INSTRUCTION

Item#: 638-85306-CHP Jova Four-Door Credenza

** Please make sure you have all parts indicated below prior to assembly.
This table is heavy and can best be assembled with the help of two or more persons.

NO	HARDWARE LIST	Q'TY
A	 Allen Wrench	1
B	 Bolt	12
C	 Lock Washer	12
D	 Flat Washer	12



Assembly Steps:

1. Place credenza top upside down on a soft surface to prevent it from scratching.
2. Attach six legs to base frame by using bolts (B), lock washers (C), flat washers (D), secure by turning with allen wrench (A) in a clockwise direction.
3. Turn credenza upright.

Cleaning Instruction: Clean finished parts with a damp cloth using a mild dishwashing liquid and water solution. Polish the finish with soft cloth and an industry recognized furniture polish.