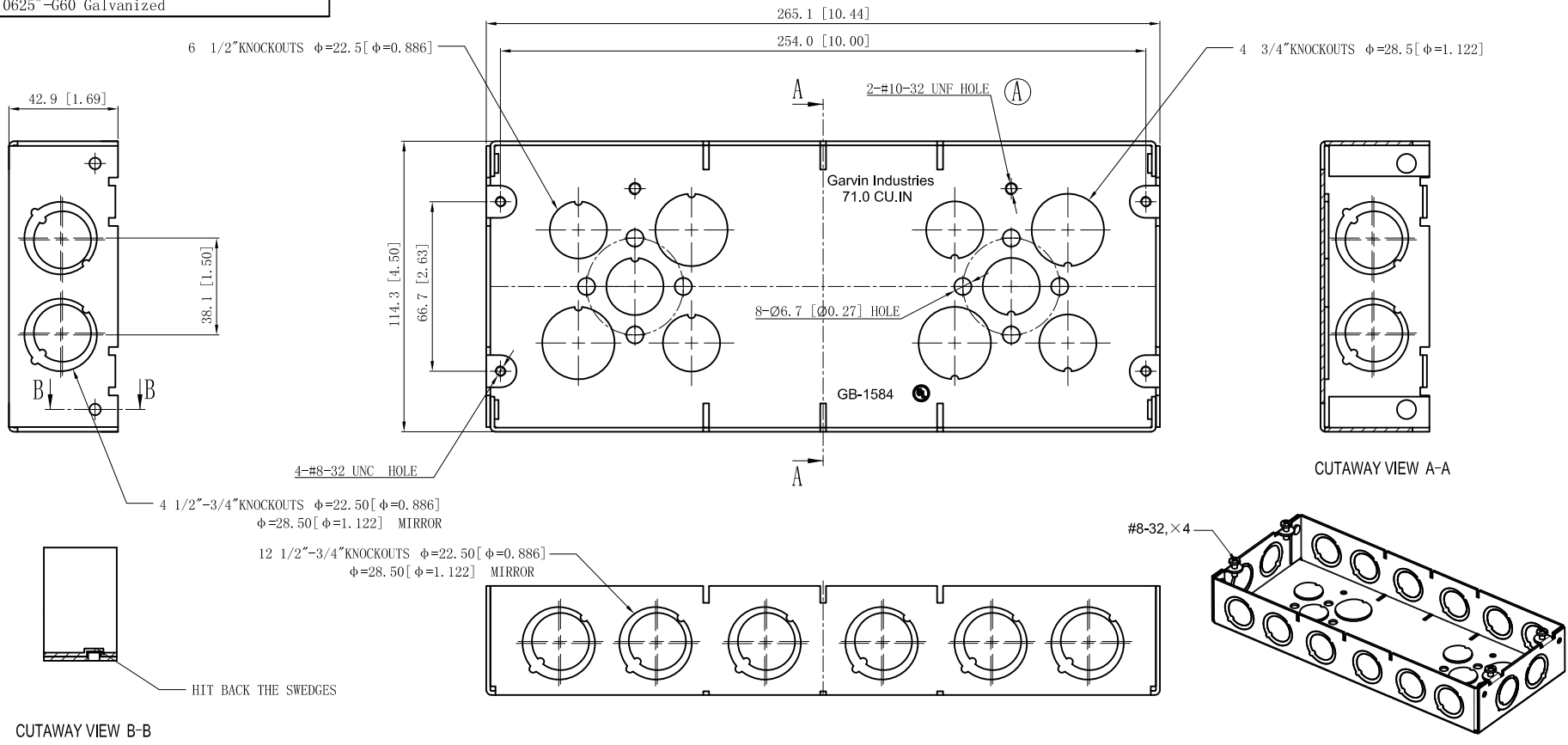


SIDES	BOTTOM
16 1/2"-3/4" KNOCKOUTS	6 1/2" KNOCKOUTS
	4 3/4" KNOCKOUTS
4 PCS 8-32x1/2 Screws Installed	
Material: Steel-0.0625"-G60 Galvanized	



DESCRIPTION
TRADE REFERENCE TERMS

This data sheet is for reference only .GARVIN INDUSTRIES reserves the right to make changes to the design without prior notice.

STANDARD PACKING	TITLE		
	GARVIN INDUSTRIES		
20 PCS	1-5/8" DEEP MULTI-GANG BOXES		
	SIZE	DWG NO.	REV
A4	GB-1584	D	
DATA SHEET			