



OBSESSED WITH HIGH RESOLUTION

LSX

LSX Wireless Music System

Rediscover stereo. Rediscover music.

LSX is the sound system for how we listen to music now: a true two-box wireless music system engineered to deliver high resolution audio with breath-taking clarity from elegantly compact speakers.

LSX uses advanced wireless technology to retain the decades old audio principle that two speakers are better than one. LSX gives music space to breathe in glorious, full-bodied, wide bandwidth stereo.

Plus, thanks to compatibility with Apple's new AirPlay 2 technology, LSX delivers a seamless user experience with iOS devices.

Half a century of innovation

Since 1961, KEF has been a key driver of innovation in the audio world. Its unerring desire for improvement continues to lead to cutting-edge developments such as the Uni-Q® driver array. This relentless drive for development saw the 2011 launch of the incredibly successful LS50 loudspeaker, which was complemented by the exceptional LS50 Wireless. LSX expands upon this legacy, showing that even compact loudspeakers can deliver detailed, realistic sound.

Going truly wireless

LSX is completely wireless, both from the source and between the loudspeakers thanks to KEF's proprietary wireless technology.

Wireless connections provide access all the music on earth, with integrated access to Spotify® Connect and TIDAL® using 2.4GHz/5GHz dual band wi-fi connectivity. For any other mobile music source, LSX also features Bluetooth™ 4.2 with the high quality aptX™ codec from Qualcomm®.

Stream effortlessly from Apple devices

For Apple® customers, LSX features Apple AirPlay® 2 via a firmware update which allows it to seamlessly and wirelessly operate with Mac®, iPhone®, iPad® and Apple TV® products.

AirPlay 2 allows the simple streaming of high-definition stereo from a wide variety of compatible apps including Apple Music, Spotify, TIDAL, YouTube.

Connecting multiple LSX AirPlay speakers in different rooms creates an instant multi-room system. Use an iOS device to send the same song to all speakers, or with an Apple Music Family account, play different songs in different rooms. Plus, once LSX is set-up on the Apple Home app, you can use Siri on your iPhone to select tracks on Apple Music, pause, adjust volume, line up the next song and more.

Perfect for TV

LSX contains the optical TOSLINK connector found on most flat-screen TV's. Combined with its two-box form factor, LSX is an ideal TV solution and will render TV sound with all of the atmosphere and clarity required to make a truly transformative experience.



The technology behind LSX

LSX is the beneficiary of over five decades of KEF's acoustic know-how. This includes unique technologies such as the Uni-Q driver array, which has been continually refined and improved for three decades. Here it works in harmony with KEF's highly advanced Music Integrity Engine™, a cutting-edge collection of bespoke Digital Signal Processing algorithms that help these compact loudspeakers deliver transparent bass with great extension, as well as providing phase correction and distortion reduction. The result: perfectly accurate sound across a wider 'sweet spot'.

Power and flexibility

LSX sports four Class-D amplifiers, one for each of the drive units, alongside dedicated DACs, providing high-end digital signal path of up to 96kHz/24bit, using the optional wired connection between the two speakers, or 48kHz/24bit in completely wireless operation. It also offers AUX and TOSLINK Optical connections.

Simplicity itself

LSX is reassuringly simple to set up, and incredibly intuitive to operate. Connecting to Wi-Fi takes mere moments via the intuitive KEF Control app or via an iOS device using AirPlay 2. The app also allows LSX to receive over-the-air firmware and features updates. KEF's optional Stream app enables use of TIDAL and DLNA streaming.

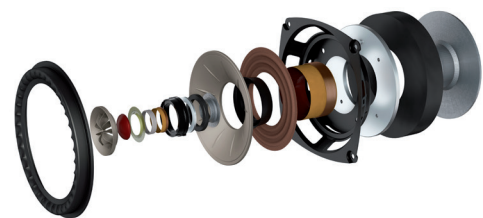
Look and feel

LSX has been beautifully designed by KEF and the renowned industrial designer Michael Young. It is available in a choice of five unique colours, all of which use KEF's tone on tone concept where elements such as the tweeter are colour matched to the finish. And LSX doesn't just look great, it feels wonderful too, thanks to the use of luxury fabric from the innovative Danish textile manufacturer Kvadrat.

The result is a cutting-edge, high-performance Wireless Music System that sounds, looks and feels like nothing else. With LSX, listeners can experience natural and full-bodied KEF sound with all the space and depth that makes listening to music so transformative.

Features:

- Acoustic design with 4.5" Uni-Q driver; FEA designed cabinet with hidden heatsink
- KEF's dedicated time correcting Music Integrity Engine
- 2 x 30W + 2 x 70W Class D amplifiers
- Adjustable EQ settings via KEF control app
- Dedicated apps for iOS and Android
- Proprietary wireless connections supports 48kHz/24bit; optional wired connection supports 96kHz/24bit transmission
- Supports source file up to 192kHz/24bit
- 2.4GHz/5GHz Dual-band Wi-Fi connectivity (DLNA/uPNP compliant)
- Apple Airplay 2 (via firmware update)
- Spotify Connect (via firmware update)
- TIDAL Music (via KEF Stream app)
- Roon Tested
- Bluetooth 4.2 with Qualcomm aptX codec
- Optical input (TOSLINK)
- AUX input
- Subwoofer output
- Mounting inserts for supporting wall mount
- Supports 3rd party remote programme
- Supports IP Control



Finishes:

LSX is available in five incredible colours – gloss white, maroon, olive, blue and black



Specifications:

Model	LSX	
Drive units	Uni-Q driver array: HF: 19mm (0.75in.) aluminium dome LF/MF: 115mm (4.5in.) magnesium/aluminium alloy cone	
Frequency range (-6dB) Measured at 85dB/1m	49Hz - 47kHz Depending on speaker settings	
Frequency response (±3dB) Measured at 85dB/1m	54Hz - 28kHz Depending on speaker settings	
Power input	100 – 240VAC 50/60Hz	
Amplifier output power	LF: 70W HF: 30W	
Max SPL	102dB	
Dimension (HWD)	240 x 155 x 180mm (9.5 x 6.1 x 7.1in.)	
Input resolution	Support up to 192kHz/24bit Depending on source resolution	
Master and slave speaker connection:	Wireless: Propriety connection 2.4GHz (transmit 48kHz/24bit) Wired: RJ45 Ethernet (transmit 96kHz/24bit) Depending on connection settings	
	Master Speaker	Slave Speaker
Inputs	2.4GHz/5GHz Dual-band Wi-Fi network Bluetooth 4.2 with aptX codec TOSLINK Optical 3.5mm Auxiliary Input RJ45 Ethernet (For network)	Not Applicable
Output	Subwoofer output 5V2A DC output	Not Applicable
Wi-Fi network standard	IEEE 802.11a/b/g/n	Not Applicable
Wi-Fi network frequency band	Dual-band 2.4GHz/ 5 GHz	Not Applicable
Bluetooth range	10m	Not Applicable
Bluetooth memory	8 devices	Not Applicable
Weight	3.6kg (7.9lbs)	3.5kg (7.7lbs)

Visit: KEF.com for more about KEF and its products.

KEF reserves the right, in line with continuing research and development, to amend or change specifications. E&OE.