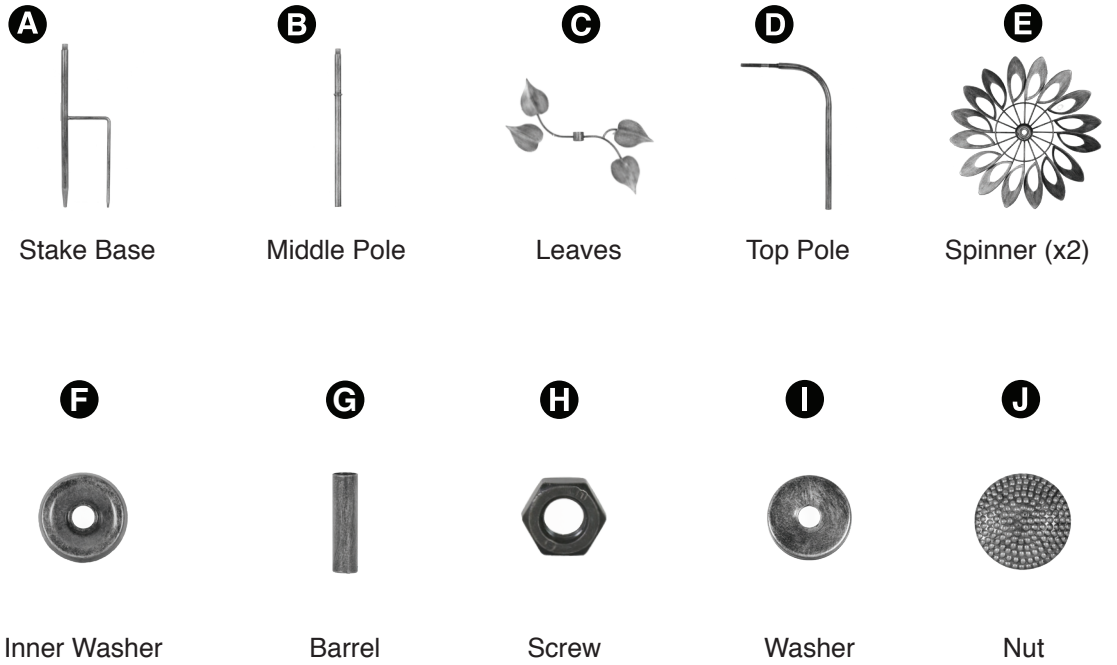
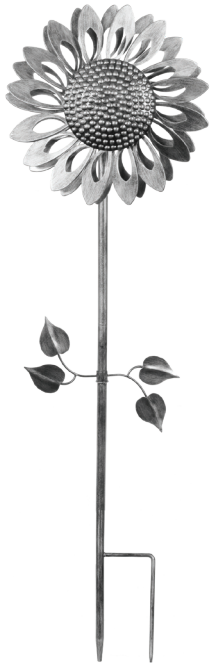


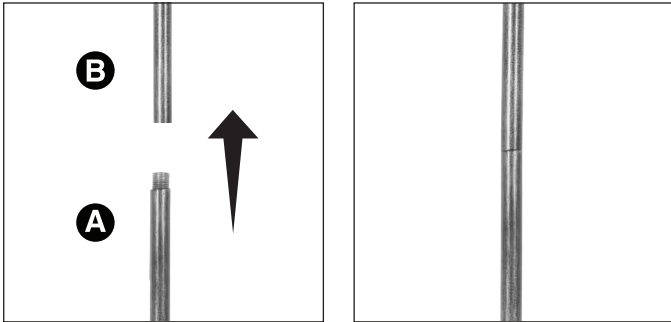
KINETIC GARDEN STAKE

Assembly Instructions



Step 1:

Attach stake base (A) to middle pole (B) by turning to the right until firmly tightened.



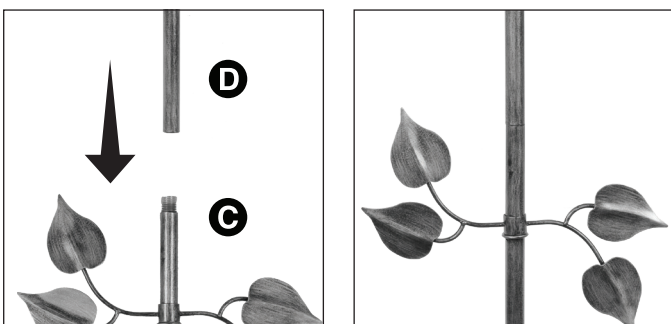
Step 2:

Attach leaves (C) to middle pole (B) (the result of step 1) by placing above middle pole through the opening.



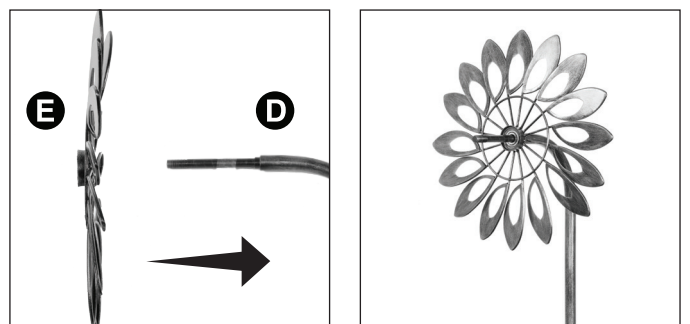
Step 3:

Attach top pole (D) to middle pole (B) (the result of step 2) by turning it to the right until it is firmly tightened.



Step 4:

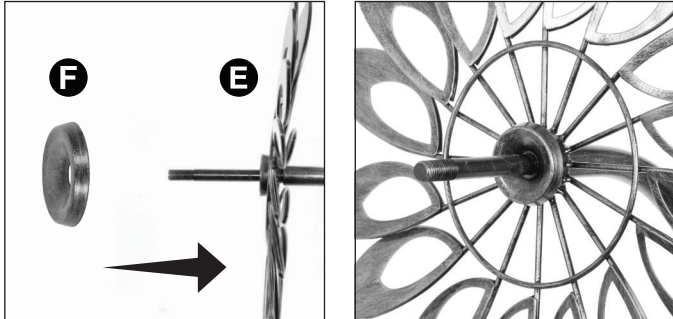
Attach spinner (E) to top pole (D) (the result of step 3) by inserting through opening.



Lay Assembly on the ground for the following steps.

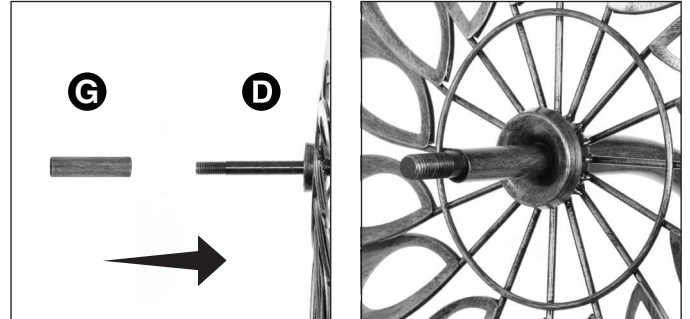
Step 5:

Attach inner washer (F) to spinner (E) (the result of step 4) by inserting through opening.



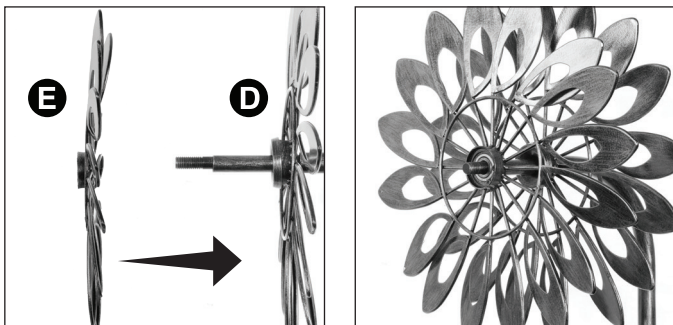
Step 6:

Attach barrel (G) to top pole (D) (the result of step 5) by inserting through hole.



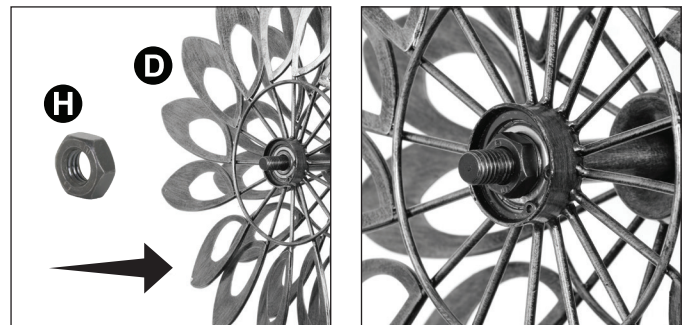
Step 7:

Attach second spinner (E) to top pole (D) (the result of step 6) by inserting through opening.



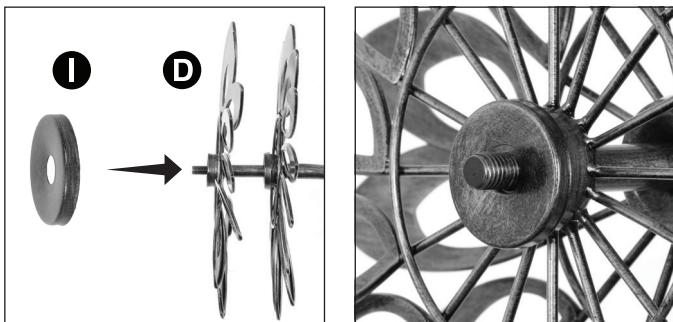
Step 8:

Attach screw (H) to top pole (D) (the result of step 7) by screwing into opening.



Step 9:

Attach washer (I) to top pole (D) (the result of step 8) by inserting through opening.



Step 10:

Attach nut (J) to top pole (D) (the result of step 9) by turning to the right until firmly tightened.

