

BV9958B

AM/FM DVD Receiver with 7" TFT Display

USER'S MANUAL

CONTENTS

Installation	2
To support the unit	3
Detaching and attaching the front panel	3
Moving the screen forward	4
Cleaning the connector	4
Wire Connection	4
Location of parts and controls (Main unit and Remote control)	6
General operations	7
Listening to radio	8
Using the RDS function	9
Operations common for audio/video	9
Listening to MP3/WMA	10
Playing DVD/video CD/MP4	11
How to use bluetooth in your car audio	12
Customizing audio/video settings	13
Setting up the DVD player	14
Troubleshooting	15
Specifications	16

Installation

Before installing your new BOSS[®] AUDIO SYSTEMS DVD Receiver, please review the items below carefully.

Choose a mounting location where the unit will not distract or otherwise interfere with the driver's ability to control the vehicle.

Before final installation, temporarily connect the wiring, check it to ensure that it has been connected properly, and test the unit to make sure it is working correctly.

Use only the installation parts and hardware provided with the unit to ensure proper installation. Using other parts can cause malfunction and possible damage to your BOSS[®] AUDIO SYSTEMS DVD receiver.

If installation requires drilling holes or other modifications to the vehicle, consult with your nearest dealer or professional car audio installer.

Do not install this unit at an angle in excess of 30° from horizontal, as it may affect performance.

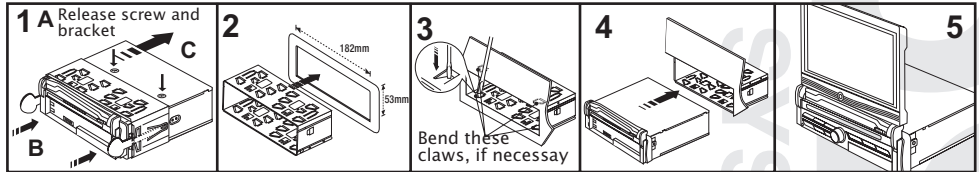
Avoid installing the unit in a location which is subject to high temperatures, direct sunlight, hot air from such sources as heaters or exhaust lines, or where it will be subject to contact with dust, dirt, moisture or excessive vibration.

INSTALLATION

PRECAUTIONS

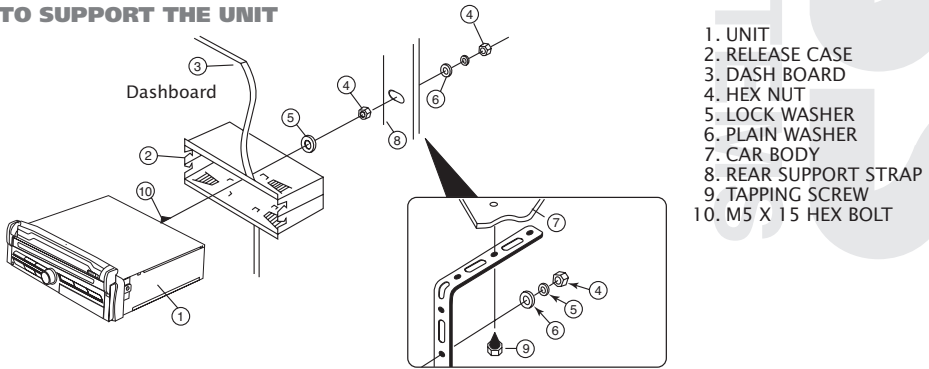
- Choose the mounting location carefully so that the unit will not interfere with the normal driving functions of the driver.
- Avoid installing the unit where it would be subject to high temperatures, such as from direct sunlight or hot air from the heater, or where it would be subject to dust, dirt or excessive vibration.
- Use only the supplied mounting hardware for a safe and secure installation.
- Be sure to remove the front panel before installing the unit.

NOTE: Inclination angle for car radio installation must not exceed 30° otherwise the front panel will not open.



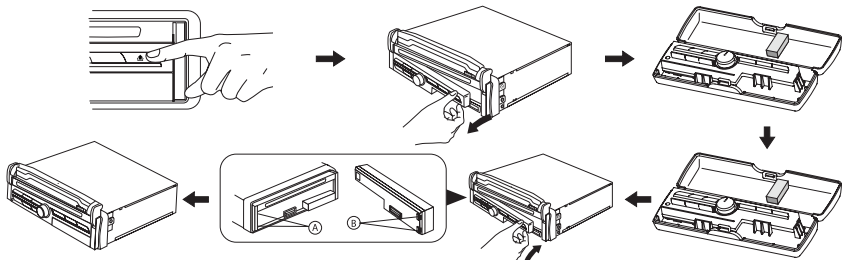
NOTE: Keep the release key in the safe place as you may need it in future to remove the unit from the car.

TO SUPPORT THE UNIT



Detaching and attaching the front panel

The front panel of this unit can be detached in order to prevent the unit from being stolen. Before detaching the front panel, be sure to press the button (1) OFF first. Then press the button and detach the panel by pulling it towards you as illustrated.

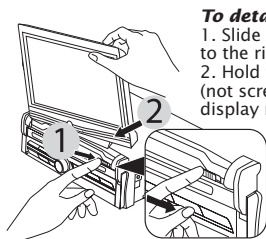


Notes:

- Do not press the front panel hard against the unit when attaching it. It can be easily attached by pressing it lightly against the unit.
- When you carry the front panel with you, put it in the supplied front panel case.
- Do not press hard or give excessive pressure to the display window of the front panel when attaching it to the unit.

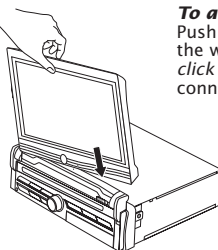
Detaching and attaching the display screen

- When the lower part of the front panel (control board) is detached, the unit can be power off.
- Do not press hard or give excessive pressure to the display window of the front panel when attaching it to the unit.
- Pay attention not to put any pressure on the display or control buttons.



To detach

1. Slide the screen release button to the right side.
2. Hold the display by the trim (not screen). Gently lift the display right and upwards.



To attach

Push and insert the screen all the way down until you heard 2 *click sounds* indicating both hole connector is attached properly.

Notes :

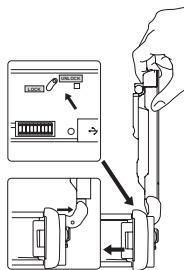
- Do not press the front panel hard against the unit when attaching it. It can be easily attached by pressing it lightly against the unit.
- When you carry the front panel with you, put it in the supplied front panel case.

Moving the screen forward

Depending on vehicles's dashboard design, there might be instances where the display screen might collide or bump into the dashboard's control knobs.

Follow the steps below to move the screen forward.

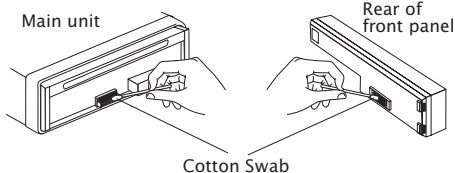
1. Slide the switch to **UNLOCK** position.
2. Hold it in **UNLOCK** position then move the screen forward. The unlock switch will move to **LOCK** position automatically when in place.



Cleaning the connector

The unit may not function properly if the connectors between the unit and the front panel are contaminated with dirt. In order to prevent this from happening, detach the front panel by pressing the button and clean the connector from time to time.

Clean the connector with a cotton swab together with contact cleaner as illustrated. Be sure to clean them carefully pin by pin and make sure not to damage the connecting points.



WIRE CONNECTION

IN / OUT CONNECTOR

DVD Audio Out: White (L) Red (R)

Connect this wire to rear seat A/V monitor system to enjoy DVD movie

Audio Out (Front): White (L) Red (R)

Audio Out (Rear): White (L) Red (R)

Video Out: Yellow

Connect to external A/V system to display

Video In: Yellow

Connect to external Video equipment

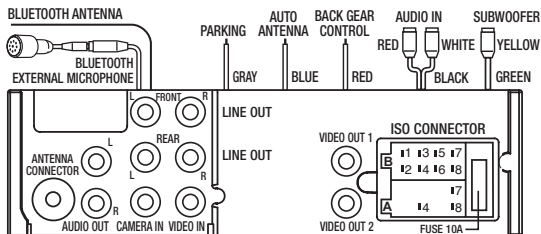
Rear Camera In: Blue

Connect to rear camera output

RCA Audio Input (Black): Left (White) Right (Red)

Subwoofer Output (Green): Plug (Yellow)

External Bluetooth Microphone



CONTROL WIRE

Parking (Gray) : Connect this wire to car hand brake system

Auto Antenna/Remote Control (Blue) :

Rear Camera (Red) : Connect to back rear camera

During back gear condition, this wire should be connected to high voltage.

ISO CONNECTOR A

- 4. MEMORY +12V
- 7. +12V (TO IGNITION KEY)
- 8. GROUND

NOTE: (connector A no. 7) must be connected by car ignition key in order to avoid that car battery becomes weak when the car will be not used for long period.

CONNECTOR B

- 1. REAR RIGHT SPEAKER (+)
- 2. REAR RIGHT SPEAKER (-)
- 3. FRONT RIGHT SPEAKER (+)
- 4. FRONT RIGHT SPEAKER (-)
- 5. FRONT LEFT SPEAKER (+)
- 6. FRONT LEFT SPEAKER (-)
- 7. REAR LEFT SPEAKER (+)
- 8. REAR LEFT SPEAKER (-)

Maintenance

FUSE REPLACEMENT

If the fuse blows, check the power connection and replace the fuse. If the fuse blows again after the replacement, there may be an internal malfunction. In this case, consult your nearest repairing center.

Warning

Use the specified amperage fuse for each lead. Use of a higher amperage fuse may cause serious damage

DRIVING WITHOUT VIDEO DISPLAY

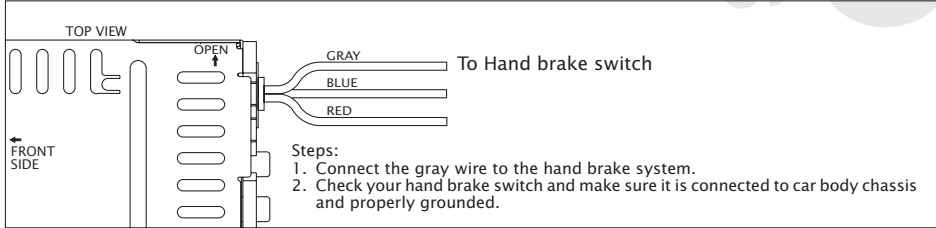
Follow the installation below so when the car is in motion, no video will come out from the LCD screen. Only sound can be heard from speaker.

Note:

- Only sound can be heard when car is in motion.
- Refer and follow your country's law regarding driving with video.

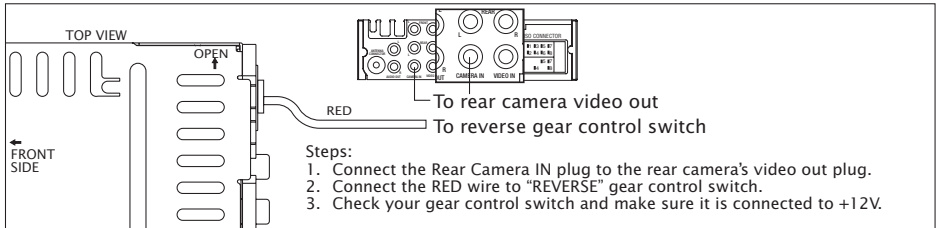
Caution:

- Do not attempt to install it by yourself if the instruction is not clear to you. Consult you dealer concerning the installation procedures.



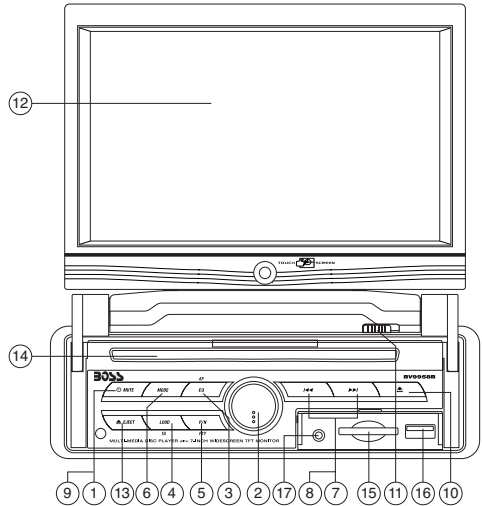
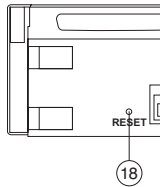
INSTALLING REAR CAMERA FOR PARKING OR REVERSE MOTION

You can install a separate camera at the rear of the car so when doing parking or reverse motion, the unit will automatically switch the video to the rear camera to guide the driver.



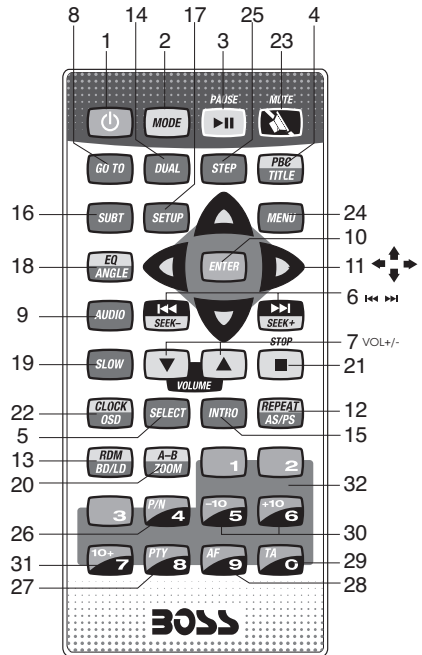
Locations of parts and controls (Main unit)

1. POWER ON/OFF (⏻)
2. SELECT FUNCTION BUTTON
3. EQUALIZER / 'AF' function BUTTON (ALTERNATIVE FREQUENCIES)
4. LOUDNESS / 'TA' function BUTTON (TRAFFIC ANNOUNCEMENT)
5. PAL / NTSC SYSTEM / 'PTY' function (PROGRAM TYPE)
6. MODE BUTTON (MODE)
7. DVD/CD TRACK / SEARCH BUTTON (⏮ / ⏭)
8. AUTO SEEK TUNING (⏮ / ⏭)
9. MUTE BUTTON (MUTE)
10. PANEL RELEASE BUTTON (⏏)
11. TFT DISPLAY PANEL RELEASE BUTTON
12. TFT-LCD DISPLAY
13. DISC EJECT BUTTON (▲)
14. DISC SLOT
15. SD/MMC CARD SLOT
16. USB PORT
17. FRONT AUX IN
18. RESET BUTTON



Locations of parts and controls (Remote Control)

1. POWER ON/OFF
2. MODE
3. PLAY/PAUSE
4. TITLE / PLAYBACK CONTROL
5. SELECT
6. SEEK+/SEEK- / CD TRACK/SEARCH
7. VOL +/VOL-
8. GOTO
9. AUDIO
10. ENTER
11. NAVIGATION
12. AUTO SEEK / PRESET SCAN / REPEAT
13. RANDOM / BAND / LOUDNESS
14. DUAL
15. INTRO
16. SUBTITLE
17. SETUP
18. EQUALIZER / ANGLE
19. SLOW MOTION
20. ZOOM / A-B REPEAT
21. STOP
22. CLOCK / ON SCREEN DISPLAY
23. MUTE
24. MAIN MENU
25. STEP (FRAME BY FRAME PLAYBACK)
26. PAL / NTSC SYSTEM
27. PROGRAM TYPE
28. ALTERNATIVE FREQUENCIES
29. TRAFFIC ANNOUNCEMENT
30. 10 TRACK SEARCH DOWN/UP
31. TWO DIGIT TRACKS SEARCHS
32. KEYPAD

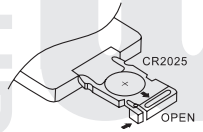


Use and care of the remote control

Installing the battery

Slide the tray out on back of the remote control and insert battery with the (+) and minus (-) poles pointing in the proper direction.

- When use for the first time, pull out the film protruding the tray.



CAUTIONS

- Remove battery if the remote control is not used for a month or longer.
- Do not recharge, disassemble, heat or dispose the battery on fire.
- Do not store battery with metallic materials.
- In the event of battery leakage, wipe the remote control completely clean and install a new battery
- When disposing of used batteries, please comply with government regulations or environmental public institution's rule that apply in your country/area.
- Always check carefully that you are loading the battery with plus (+) and minus (-) poles facing the proper directions.

Using the remote control

Point the remote control in the direction of the front panel to operate.

IMPORTANT

- Do not store the remote control in high temperatures or direct sunlight.
- Do not let the remote control fall onto the floor, where it may become jammed under the brake or accelerator pedal.

GENERAL OPERATIONS

Turning the unit ON/OFF (⏻)

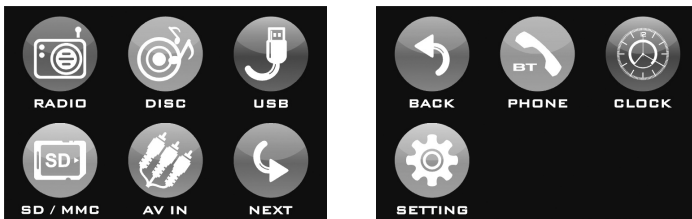
Press "⏻" button to turn on unit. To turn off, press and hold the button again.

Calibrate Touch Screen

To start operation, Calibrate first the touch screen monitor. On the main menu, touch SETTING -> Calibrate Touch Screen will appear, then follow the instruction on the screen.

Main Menu

This is root of the screen hierarchy and you can simply access all features by tapping on the touch screen buttons.



Selecting a source (MODE)

Press **MODE** repeatedly to switch between TUNER, DISC, AUX IN, USB, SD/MMC or BLUETOOTH (if Bluetooth is connected) mode.

Adjusting Volume

- Head Unit: Rotate **VOL** knob right or left to increase or decrease volume.
- Remote Control: Press **VOL+** or **VOL-** to increase or decrease volume.

Mute Button

- Head Unit: Press **MUTE** button to mute the sound at once. Press again to return to previous volume level.
- Remote Control: Press **M** button.

Loud Button (LOUDNESS)

- Head Unit: Press **LOUD** button to turn on/off LOUD feature.
- Remote Control: Press and hold **LD** button on remote control to turn on/off LOUD feature.

Equalizer (EQ)

Main Unit: On main menu, touch **SETTINGS > EQ SETTINGS**. Under *Dsp-preset*, select by touching the desired EQ setting. On main unit, press the EQ button.

Remote: Press **EQ** button. Under *Dsp-preset*, select the desired EQ by pressing (◀/▶).

Subwoofer

Press **EQ** button to EQ setting, select SUBWOOFER On/Off by pressing (◀/▶).

CLOCK

To show clock, switch to **RADIO** mode and press CLK on remote control.

Tips: You can also touch the frequency no. on the screen to show the clock.

How to Set Clock

1. Press **CLOCK** on main menu
2. Press (▲/▼) to set the time.
3. Press **X** to save and exit.

DUAL SETTINGS

DUAL is a feature that lets user listen to radio while the passenger at the back can watch video. This unit supports connection of external AV device such as portable TV through the AUDIO OUT and VIDEO OUT port.

1. Connect the AUDIO OUT and VIDEO OUT port at the back of head unit to the LINE IN of external AV device.
2. Press and hold **MODE**. Select DISC, USB or SD/MMC source.
3. Press **DUAL** key on remote control to select which mode you want to control.
T = TUNER, C = CARD, U = USB, D = DISC

Note: You will need to connect an external portable TV or monitor when using this feature.

VIEWING PHOTO

1. Insert disc, USB memory stick or SD/MMC card containing picture file format.
2. Using remote (◀/▶), select PHOTO function and press **ENTER**.
3. Using remote (▲/▼), select a file to view and press **ENTER**.

Note:

Press **MENU** on remote control to exit photo playback.

Press **MENU** on remote control will also go back one level or return to previous menu.

RESET

Reset button is placed on the housing. To reset, use a sharp point object and press and hold the **RESET** button for 2 seconds.

The reset button is to be activated for the following reason:

- Initial installation of the unit when all wiring is completed.
- All the function buttons does not operate.
- Error symbol on the display.

LISTENING TO RADIO

Band (BD)

Pressing this key repeatedly will toggle cyclically between each band. FM1---FM2---FM3---MW(AM)1---MW(AM)2.

Automatic or Manual tuning (SEEK + / SEEK -)

When pressed short, these keys are operated as MANUAL tuning mode.

When pressed longer than 1 sec., they are operated as AUTOMATIC tuning mode.

Auto Seek/Preset scan (AS/PS)

Preset Scan (PS) - By pressing shortly, the radio plays each preset station for 5 seconds.

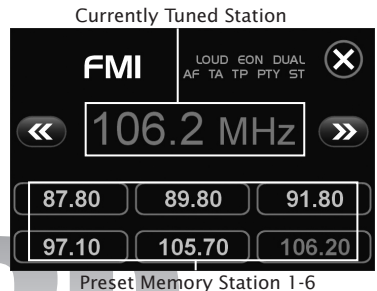
Auto Seek (AS) - By pressing longer than 1 sec, auto seek is activated. The 6 strongest stations are preset and stored in the corresponding preset number. When Auto Seek operation is finished, the radio executes the preset scan.

Storing and Recalling Frequencies

If you press any of the **NUMBER (1-6)** you can easily store up to six broadcast frequencies for later recall with the touch of a button.

1. Choose a desired **BAND**.
2. When you find a frequency that you want to store in memory, press a **NUMBER(1-6)** and hold until the preset number shows and lit in the display.
3. The selected radio station frequency has been stored in memory. The next time you press the same **NUMBER (1-6)** the radio station frequency is recalled from memory.

Note: Up to 18FM / 12AM preset stations can be stored in the memory.



USING THE RDS FUNCTION

What is RDS?

The RDS (Radio Data System) is a digital information system developed by the EBU (European Broadcast Union). Piggy-backed on normal FM broadcasts, RDS offers a variety of information services and automatic retuning functions for RDS-compatible car stereos. In 1988, RDS became available in the United Kingdom, France, West Germany, Ireland and Sweden.

Note: Make sure that you first select the correct Region setting (for RDS to work, region setting should be Europe). To make the region setting, go to main menu, touch **SETTING**, then touch **Region Setting** to the select the desired region.

'AF' Function (Alternative Frequencies)

- Press **AF** to toggle alternative frequency On/Off.
- When AF is ON, the radio checks the signal strength of the AF all the time, when it becomes too weak, the unit search for a better signal within AF lists then switch to that frequency.

'TA' Function (Traffic Announcement)

When pressed short, it is activated as TA mode on or off. When TA mode is on and traffic announcement is transmitted.

- When the unit is in CD/MP3 mode, it will switch to radio mode temporarily.
- If the volume level was under the threshold point, it will be raised to the threshold point.

'PTY' Function (Program Type)

1. Press and hold **PTY** button to turn ON Program type.
2. Rotate **VOL** knob to select program type.
3. Once desired program shows, simply press **PTY** button once more and unit start searching for available stations.

Note: Program type will flash when searching for stations.

OPERATIONS COMMON FOR AUDIO / VIDEO

-10 Tracks Down / +10 tracks Up

1. Press and hold **-10** button to jump 10 tracks backward starting from currently played track.
2. Press and hold **+10** button to jump 10 tracks forward starting from currently played track.

Specifying particular track

During playback, all track file names under a folder will be displayed on the screen categorized by Music, Photo, Video. Simply tap the screen on which category you want to play and rotate the volume knob to select file then push volume knob to start playback.

Tips: To select track 3, press 3.

To select 13, press and hold 10+ follow by 3.

To select 23, press and hold 10+ (2 times) follow by 3.

Random Playback

Press **RANDOM** during playback to play the tracks in random/shuffle order. Press it again to cancel.

Tips: **RANDOM** is **SHUFFLE** on screen.

Stopping Playback

1. Press **Stop** on remote control during playback to stop playback. That position is stored in memory.
2. Press **▶▶** to continue. Playback starts from the position at which it was stopped.

Note: Music playback has no stop function. Use **▶▶** button to pause playback.

Fast Forward / Fast Reverse

1. During playback, press and hold **◀◀** or **▶▶**. Unit scans at the speed of x2 - x4 - x8 - x16 - x20
2. To resume normal playback at a desired point, press **▶▶**.

Note: No sound is played during fast forward / fast reverse.

Finding the Beginning of Tracks

During playback, press **◀◀** or **▶▶**.

◀◀ : Press to start playback from the beginning of the previous chapter or track.

▶▶ : Press to start playback from the beginning of the following chapter or track.

Pause Playback

During playback, press **▶▶**. Press again to resume playback.

A-B Repeat Playback

This feature allows you to loop playback a section of the movie/audio starting from Point A to B.

1. Press the **▶▶** button to play the movie/audio.
2. Once you have located the section you wish to playback on loop repeat, press and hold **A-B** button. You will see "Rep-A" on the screen.

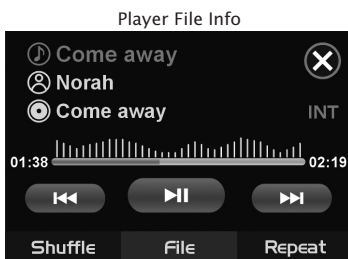
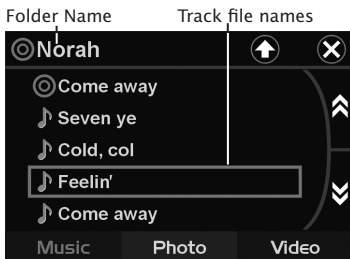
3. Let the movie/audio play on until you have reached the end of the section you wish to watch on continuous loop. Once you have reached this point, press and hold **A-B** button again. "Rep-A-B" will appear on your screen. Playback will now start from Point A -B.
4. To stop A-B repeat playback, press and hold **A-B** button once more until "A-B CANCEL" disappears and normal playback resumes.

Displaying information (OSD) - video files only

During playback, you can see all information and current play settings. Display will show related playback time, elapse time, title number, chapter number and other information.

1. Press **OSD** on the remote control once. Unit will display the play time and the disc elapse time.
2. Press it once more and all other settings information will be displayed.

LISTENING TO MP3/WMA



Repeat tracks

You can choose between repeat playback of a single track or all tracks.

1. Press **REPEAT** on the remote control during playback.
2. Every time you press this button, the unit switches to the following settings:

Repeat 1 - Repeat the current playback track.

Repeat All - Repeat all folders and tracks.

Return / Go Back

Press **TITLE** on remote control to go back one level or return to previous menu.

TITLE

During music playback, press **TITLE** on remote to return to audio file lists.

AUX IN

An external audio source (e.g. portable MP3 player) can be connected to the AUX IN socket to be played back by the vehicle loudspeakers.

1. Connect the AUX IN socket with the audio output of the external device.

USB/SD/MMC Memory Card

The device is equipped with a USB interface and a memory card reader for SD/MMC cards. MP3 or WMA files stored on these media can be played.

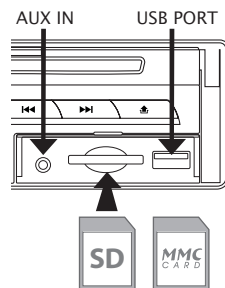
Note:

- Due to the great variety of devices with USB and SD/MMC card interfaces that sometimes have manufacturer-specific functions, we cannot guarantee that all media will be recognized and that all operational functions will be available with this device.

- You cannot operate USB hard drives on the device.

- It maybe necessary to turn the flash memory ON so that it can be read.

1. Plug your USB storage medium into the USB port.
2. If you use a memory card, insert it into the memory card reader.
3. The player automatically switches to the input used and starts playback.
4. See the section on operations common for audio / video files on how to control USB or memory card playback.



PLAYING DVD/VIDEO CD/MP4

Playback

1. Insert a disc. When the disc offers a menu, the menu is displayed. When a disc already inserted, press **MODE** to switch to disc mode.
2. On DVDs and video CDs with playback control (PBC), menu screens may appear automatically. If this happens, perform the operation described below to start playback.

CAUTION: Make sure that the Video TV system settings is set correctly according to your disc your playing. If you are not sure, leave it set to "**Auto**". Improper setup of TV system might cause the video to stop/skip/pause playing although audio might continue to play. You can setup video TV settings using the **SETUP** feature of the remote control. Refer to "**SETTING UP THE DVD PLAYER**" section.

DVD menu

Press **▲**, **▼**, **◀**, **▶** to select the desired item, then press **Enter**.

Video CD menu

Use the number keys ("0" to "9") to select the desired number, then press **Enter**. The menu screen does not appear when the PBC function is turned off. In this case, press and hold button to turn on PBC feature.

Turning PBC ON/OFF (VCD only)

PBC (Playback Control) is a feature found on VCD 2.0 and SVCD 1.0. PBC allows control of the playback of play items and the possibility of interaction with the user through the remote control or some other input device available. If it's on, the player won't auto start after inserting the disc because it will take time to select program on disc; if it's off, the player will auto playback the program on disc one by one.

1. To turn ON PBC function, press **PBC** on the remote control. To turn OFF, press the button again.

Note: Not all VCD/SVCD disc have PBC functions.

Repeat Playback

FOR VCD

1. Press **REPEAT** on the remote control during playback.
2. Every time you press this button, the unit switches to the following settings:

Repeat 1 – Repeat the current playback track.

Repeat All – Repeat all folders and tracks.

Repeat Off – Turn OFF repeat function.

Note: PBC feature in VCD disc needs to be STOP in order to use Repeat playback.

FOR DVD

You can choose between repeat playback of a title or chapter.

1. Press **REPEAT** on the remote control during playback.
2. Every time you press this button, the unit switches to the following settings:

Repeat Title – Repeat the current playback title.

Repeat Chapter – Repeat the current playback chapter.

Repeat All – Repeat all folders and tracks.

Repeat Off – Turn OFF repeat function.

Searching for particular track using GOTO

You can use the GOTO function to search for a desired track number or particular point of a track to play.

1. Press **GOTO** on the remote control during playback. Time and track number search appears.
2. Enter the minutes and seconds for the currently played track if you want to search by time. Press **Enter**.
3. Enter track number if you want to search by tracks. Press **Enter**.

Changing audio language during playback (Multi-audio)

DVDs can provide audio playback with different languages and different systems (Dolby Digital, DTS etc.). With DVDs featuring multi-audio recordings, you can switch between languages/audio systems during playback.

VCD can provide different audio languages usually divided into left and right channels.

1. To choose different audio, simply press **Audio** on the remote control repeatedly during playback.

Note:

- With some DVDs, switching between languages/audio systems may only be possible using a menu display.
- You can also switch between languages/audio systems using SET-UP MENU or tap the screen then press Audio

Changing the subtitle language during playback (Multi-subtitle)

With DVDs featuring multi-subtitle recordings, you can switch between subtitle languages during playback.

1. Press **SUBT** on the remote control during playback. Press repeatedly until the supported desired subtitle appears.

Note:

- With some DVDs, switching between subtitles may only be possible using a menu display.
- You can also switch between subtitles using SET-UP MENU or tap the screen then press Subtitle.

Changing the viewing angle during playback (Multi-angle) - (DVD only)

With DVDs featuring multi-angle (scenes shot from multiple angles) recordings, you can switch among viewing angles during play-back.

1. Press and hold **Angle** on the remote control during playback of a scene.

Title (DVD only)

During DVD playback, press **Title** on remote control to return to FIRST title.

Return to Root Menu (DVD only)

During DVD playback, press MENU on remote control to return to root menu.

Note: Some DVD may not contain root menu.

Slow motion playback

This feature lets you slow down playback.

1. Press **Slow** on the remote control during playback.
2. Pressing it repeatedly will switch you to the following steps: 1/2 - 1/3 - 1/4 - 1/5 - 1/6 - 1/7.

Note:

- To resume normal playback, press PLAY/PAUSE (▶||).
- There is no sound during slow motion playback.
- With some disc, slow motion may be unclear during slow motion playback.

Zooming in During Playback

You can zoom in into the picture during playback.

1. Press **ZOOM** on the remote control during playback.
2. Every time you press this button, the unit will zoom 2 - 3 - 4 - 1/2 - 1/3 - 1/4 times and OFF.

Frame-by-frame playback

This lets you move ahead one frame at a time during playback.

1. Each time you press and hold **Step** button on remote control, you move ahead one frame.
- To return to normal playback, press ▶||.

PAL / NTSC (P/N)

Press and hold **P/N** button to switch between PAL, NTSC system.

Return / Go Back

Press **MENU** on remote control to go back one level or return to previous menu.

HOW TO USE BLUETOOTH IN YOUR CAR AUDIO

HOW TO PERFORM PAIRING

Before you can dial out from the car stereo, you must first perform PAIRING. Pairing is a procedure used to connect 2 Bluetooth devices together

1. On Main Menu, tap **PHONE > Pairing**.
2. Turn on Bluetooth feature of your mobile phone. Perform "Add Bluetooth device" from your mobile phone. The mobile will search for any Bluetooth devices within the range. Select "**CAR-BT**" and enter Passkey: "**0000**" to connect. (Please refer to the instruction manual of your mobile phone for Bluetooth Pairing).
3. After successful pairing, connect the Bluetooth function of your mobile with the car stereo. A Bluetooth logo will appear on top of phone menu screen.

Note: "CAR-BT" is the Bluetooth device name of the car stereo.

Audio Streaming

If your phone is "A2DP" format compatible, then you can play music in your mobile and the sound will be transferred to car head unit.

1. Make sure your mobile and the unit is properly paired and connected.
2. Play the music through your mobile music player software.
3. Press **PHONE > MUSIC** on head unit. The sound will be transferred to the head unit.
4. You can press the **◀ / ▶** button on head unit to play previous / next song stored in mobile.

Making Calls

Important: Before you make calls, make sure that the devices are properly paired and connected.

1. On Main Menu, tap **PHONE > DIAL**.
2. To make calls via the touch screen, tap those number keys on screen and press **CALL** button to dial out.
3. Press **END CALL** button to end call.

Answering / Rejecting / Hanging Up

1. To answer a call, press **ANSWER** appearing on the screen. In order to reject a call, just touch **REJECT** appearing on screen.
2. Once you have finished your conversation, press **END CALL** to hang up.

Contacts

Contacts allow the users to add contacts directly stored in head unit.

1. On Main Menu, tap PHONE > Contacts.
2. Press the “+” button to add a contact.
3. Enter the name then press *Next*.
4. Enter the number then press *Next*.
5. Select the number type then press the *SAVE* logo button.

NOTE: You may delete or edit your phone book entries by touching the **DELETE** or **EDIT** button that appears on screen.

History

History contain the lists of outgoing and incoming numbers.

1. On Main Menu, tap PHONE > History.
2. Select the number you wish to call out and then press **CALL** button.
3. You can only delete all entries by touching the **CLEAR ALL** button appearing on the screen.

CUSTOMIZING AUDIO / VIDEO SETTINGS

AUDIO SETUP

1. Press **VOL** knob to enter AUDIO setup. Selected item will be highlighted. You can set BASS, TREBLE, BALANCE, FADER, TA VOLUME.
2. Press **◀▶** button to select item. Rotate **VOL** knob to make adjustments.
3. Press **VOL** knob to exit settings.

VIDEO SETUP

1. Press and hold **VOL** knob to enter VIDEO setup. Selected item will be highlighted. You can set BRIGHTNESS, CONTRAST, SATURATION, HUE, SHARPNESS.
2. Press **◀▶** button to select item. Rotate **VOL** knob to make adjustments.
3. Press and hold **VOL** knob to exit settings.

SETTING UP THE DVD PLAYER

You can flexibly customize the unit to suit your preference. You can set the language and other video and audio settings so when playback starts it will always use your preferred settings.

Important:

1. Load any disc into the unit before you can access the setup.
2. Press **Setup** on the remote control.
3. Use (◀/▶) to return / enter category.

Settings	Category	Options
System Setup	TV System	NTSC, PAL, AUTO
	Auto Play	ON, OFF
	TV Type	4:3PS, 4:3LB, 16:9
	Password	Setup password
	Rating	Setup rating level
	Default	Restore to factory settings
Language Setup	OSD Language	Select preferred options appear on screen
	Audio Language	
	Subtitle Language	
	Menu Language	
	MPEG4 Language	
Video Setup	Brightness	Use navigation keys on remote control to setup desired level.
	Contrast	
	Hue	
	Saturation	
	Sharpness	

Setting Rating Password

- 1 Press **Setup** on the remote control.
- 2 Using Navigation keys select *System Setup > Password* and press **Enter**.
- 3 Enter the default password **'0000'** and press **Enter** to unlock first and then enter new 4 digit password and press **Enter**. The unlock logo will switch to lock indicating password has been set.

Note:

- The default password is **'0000'**.
- In case you forgot your password, you can use the master password **'0000'** to unlock and reset the password.
- Master password will only work while **Setup** button is press during playback.

Troubleshooting

Symptom	Cause	Solution
No power.	The car ignition switch is not on.	<i>If the head unit is properly connected to the car accessory power circuits, but the engine is running, switch the ignition key to the "ACC" position.</i>
	The fuse is blown.	<i>Replace the fuse.</i>
Disc cannot be loaded or ejected.	There is a disc already in the DVD player.	<i>Remove disc in player and try again.</i>
	Disc is inserted upside down.	<i>Insert the disc with the label facing up.</i>
	Disc is dirty or defective.	<i>Clean the disc, or play a new one.</i>
	Car interior temperature is too high.	<i>Allow temperature to cool down to a normal level.</i>
	Excess atmospheric humidity or condensation is present.	<i>Leave player off for an hour or so, and then try again.</i>
No sound.	Volume is set to minimum.	<i>Adjust volume to desired level.</i>
	Wiring not properly connected.	<i>Check wiring connections.</i>
Sound skips.	Head unit is installed at an angle of greater than 30° from horizontal.	<i>Adjust installation angle to less than 30° from horizontal.</i>
	Disc is dirty or defective.	<i>Clean the disc, or play a new one.</i>
Keys on front panel do not operate.	The built-in microprocessor is not operating properly due to noise.	<i>Press the RESET button.</i>
	Front panel is not properly fixed in place.	<i>Remove front panel, press RESET button, and re-insert front panel.</i>
Radio does not work, or the radio automatic selection function does not work.	Antenna cable not connected.	<i>Insert the antenna cable firmly into connector.</i>
	The signals are too weak to be received properly.	<i>Select station manually.</i>

Specifications

BV9958B

AM/FM DVD Receiver with 7" TFT Display

CD/MP3 PLAYER

Signal to noise ratio	> 60 dB
Channel separation	> 50 dB (1 kHz)
Frequency response	20Hz - 20 kHz

RADIO

FM Section:

Frequency range	87.5 - 107.9 MHz (America), 87.5-108 MHz (Europe)
Channel step	200 kHz (USA), 50 kHz (Europe)
Sensitivity	2.8 μ V
Stereo separation	30 dB
Signal to noise ratio	50 dB

MW(AM) Section:

Frequency range	530 - 1710 KHz (America), 522 - 1620 KHz (Europe)
Usable sensitivity	32 dB μ V

TONE CONTROLS

Bass (at 100Hz)	+/- 10 dB
Treble (at 10kHz)	+/- 10 dB

LINE-OUT

Output	750 mV
Impedance	10k Ohm

AMPLIFIER

Maximum output power	85 watts x 4 channels
----------------------	-----------------------

GENERAL

Power supply	12V DC (10.8-15.6V allowable)
Speaker impedance	4 or 8 Ohm
Fuse	10A



Instructions on environment protection

Do not dispose of this product in the usual household garbage at the end of its lifecycle; hand it over at a collection point for the recycling of electrical and electronic appliances. The symbol on the product, the instructions for use or the packing will inform about the methods for disposal.

The materials are recyclable as mentioned in this marking. By recycling, material recycling or other forms of reutilization of old appliances, you are making an important contribution to protect our environment.

Please inquire at the community administration for the authorized disposal location.