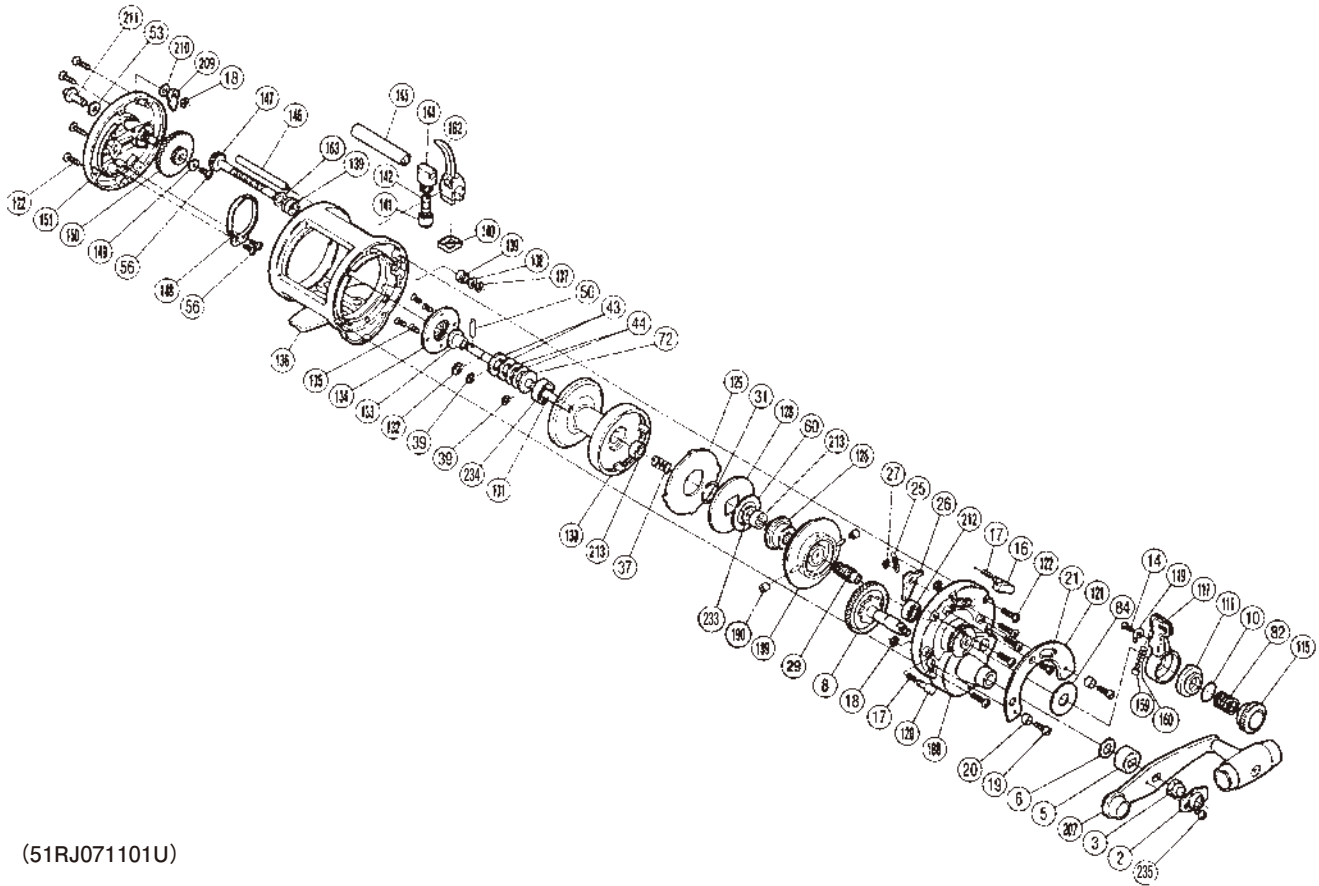


SHIMANO

TR

TR-1000LD



(51RJ071101U)

| # | Part No. | Description | # | Part No. | Description | # | Part No. | Description |
|----|----------|--------------------------|-----|----------|--------------------------|-----|----------|----------------------|
| 2 | 10QFX | Handle Lock | 72 | 104X5 | Pre-Load Washer A | 144 | 10GY5 | Level Wind Guide |
| 3 | 10FT2 | Handle Nut | 82 | 108H8 | Dial Spring | 145 | 10NMX | Level Wind Guard |
| 5 | 10KZH | Gear Shaft Shield | 84 | 108DH | Lever Thrust Ring | 146 | 10PCQ | Stabilizer Bar |
| 6 | 10D5G | Gear Shaft Thrust Washer | 115 | 108BL | Pre-Program Dial | 147 | 10NVH | Worm Shaft |
| 8 | 10TXA | Main Gear | 116 | 10CBW | Lever Shaft Body | 148 | 10GUX | Click Spring |
| 10 | 108WK | Body O Seal | 117 | 108H0 | Drag Controllever | 149 | 104H5 | Lock Washer |
| 14 | 10QG5 | Click Spring Screw | 119 | 10468 | Lever Click Spring | 150 | 105LX | Idle Gear |
| 16 | 10BRM | Strike Stop | 120 | 10BNC | Free Spool Detent | 151 | 107P2 | Left Side Plate |
| 17 | 10BNL | Pressure Spring | 121 | 108HN | Lever Quadrant | 159 | 10TZR | Friction Shoe |
| 18 | 105NK | C Lock | 122 | 10PRO | Side Plate Bolt | 160 | 10TUX | Friction Shoe Spring |
| 19 | 10M2Q | Quadrant Anchor Bolt | 126 | 10LOY | Pinion Guard | 162 | 10TWY | Line Guide |
| 20 | 10CCG | Bolt Shield | 128 | 10G40 | Drag Plate | 163 | 107R0 | Worm Shaft Spacer |
| 21 | 10MLF | Quadrant Screw | 129 | 1060P | Titanium Drag Washer | 188 | 10BJB | Right Side Plate |
| 25 | 10CBR | Dog Spring | 130 | 10NK3 | Spool | 189 | 106AH | Cooling Shield |
| 26 | 10PG1 | Dog | 131 | 10EUA | Main Shaft | 190 | 10CPJ | Brake Collar |
| 27 | 109H9 | Dog Spring Retainer | 132 | 105NJ | "C" Lock | 207 | 102SB | Handle |
| 29 | 10TZ9 | Pinion Gear | 133 | 105X3 | Pre-Load Body | 209 | 10GQN | Click Pawl |
| 31 | 10EVQ | Seal Lock | 134 | 106A3 | Click Gear | 210 | 10C48 | Click Pawl Washer |
| 37 | 10609 | Pressure Release Spring | 135 | 10MGQ | Click Gear Screw | 211 | 104GN | Click Button |
| 39 | 105SA | "C" Lock | 136 | 103W2 | Frame | 212 | 104VH | Ball Bearing |
| 43 | 104X4 | Pre-Load Washer (B) | 137 | 105NE | Worm Shaft Retainer | 213 | 105C8 | Ball Bearing |
| 44 | 1052B | Pre-Load Spring B | 138 | 10FTN | Worm Shaft Holder Washer | 233 | 1058D | Washer |
| 50 | 105X1 | Cross Pin B | 139 | 104T5 | Worm Bushing | 234 | 104Q5 | Ball Bearing |
| 53 | 104H2 | Click Button Washer A | 140 | 10GY7 | Line Guide Cover | 235 | 10LLV | Screw |
| 56 | 103GS | Click Spring Screw | 141 | 10FJU | Pawl Cap | | | |
| 60 | 1052A | Pre-Load Spring A | 142 | 10FJA | Line Guide Pawl | | | |

Please note that the number of adjusting washers may not be the same as shown in the exploded views.
(Adjustment will vary with each individual product.)

(230825)_004