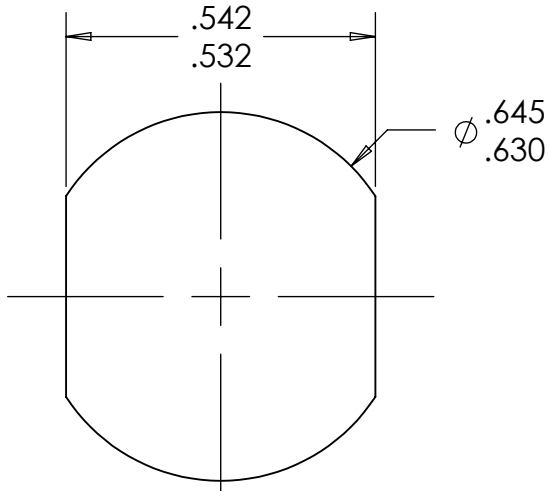
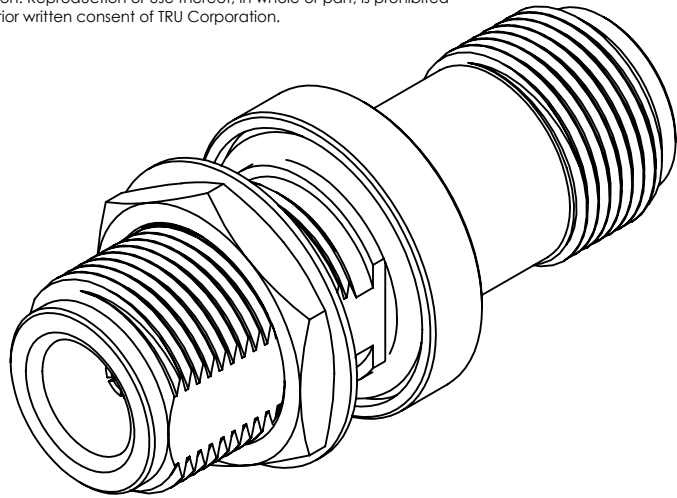
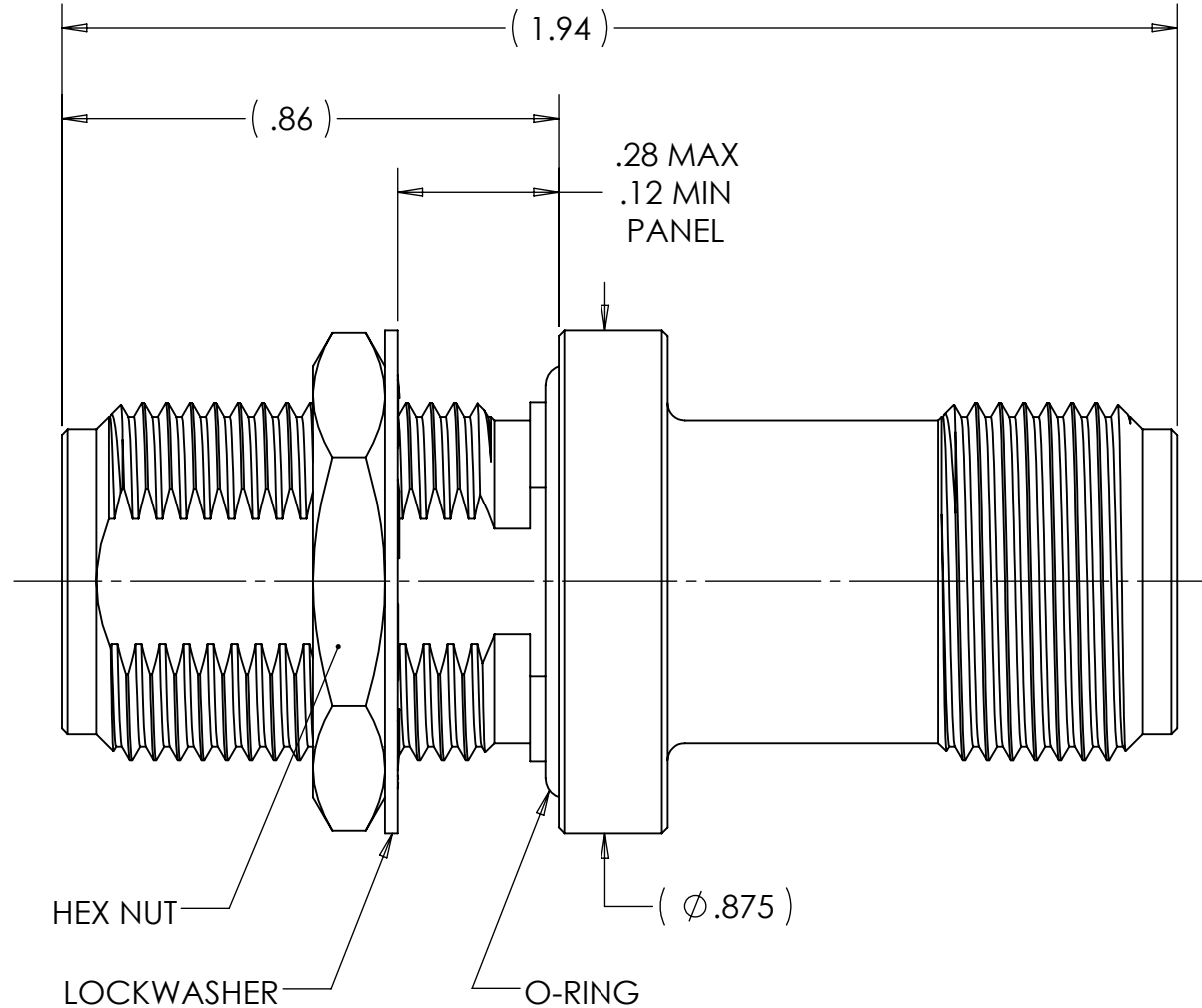
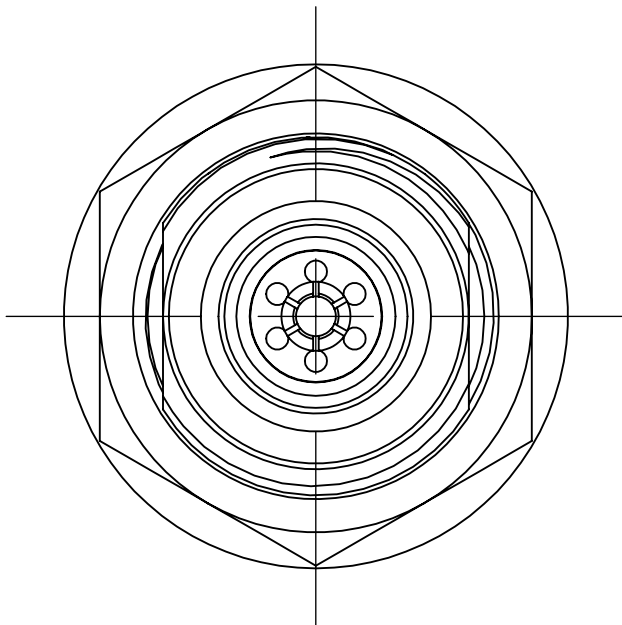


This document, including the design, configuration and mechanical features revealed herein are the sole, confidential and proprietary property of TRU Corporation. Reproduction or use thereof, in whole or part, is prohibited without the prior written consent of TRU Corporation.



RECOMMENDED  
MOUNTING HOLE



## ENGINEERING DATA

**ELECTRICAL:**  
IMPEDANCE: 50 OHMS NOMINAL  
FREQUENCY RANGE: DC to 18 GHz

**MECHANICAL:**  
INTERFACE: N(f) per MIL-STD-348 FIG. 304.2

**ENVIRONMENTAL:**  
SEALING: IP67 IN MATED CONDITION  
CORROSION: MIL-STD-810G 509.6 (SALT FOG)


**MATERIAL:**  
CONTACTS: BERYLLIUM COPPER  
INSULATORS: PTFE  
BODY: STAINLESS STEEL  
O-RING: SILICONE RUBBER  
LOCKWASHER & HEX NUT: STAINLESS STEEL

**FINISH:**  
CONTACTS: GOLD PLATED  
BODY: GOLD PLATED  
LOCKWASHER & HEX NUT: GOLD PLATED

**NOTES:**  
1. UNLESS OTHERWISE SPECIFIED; ALL DIMENSIONS ARE FOR REFERENCE ONLY.

MATERIAL	
COMMENTS:	
surface area: sq inch	weight: lbs

DO NOT SCALE DRAWING	DRAWN AM	DATE 10/14/15
UNLESS OTHERWISE SPECIFIED: DIMENSIONS ARE IN INCHES  TOLERANCES: FRACTIONS: $\pm 1/64$ .XX : $\pm .01$ .XXX: $\pm .005$ ANGLES: $\pm 1/2^\circ$ MACHINED SURFACES:  63/	ENG APPR. AM	DATE 10/14/15
	MFG APPR.	DATE
	OTHER APPR.	DATE
THIRD ANGLE PROJECTION 		

 a division of <b>WINCHESTER</b> <small>MANUFACTURING</small>		<b>TRU Corporation</b> <b>245 Lynnfield St,</b> <b>Peabody, MA 01960</b>	
TITLE:  CONNECTOR, COAXIAL N(f) to N(f) BLKHD ADAPTER			
SIZE <b>B</b>	DWG. NO.  TRU-13071		REV  -
CAGE CODE: 92180		SCALE: 3:1	SHEET 1 OF 1