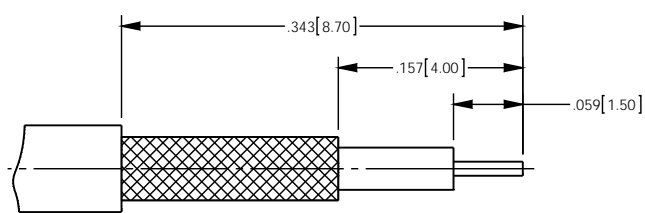
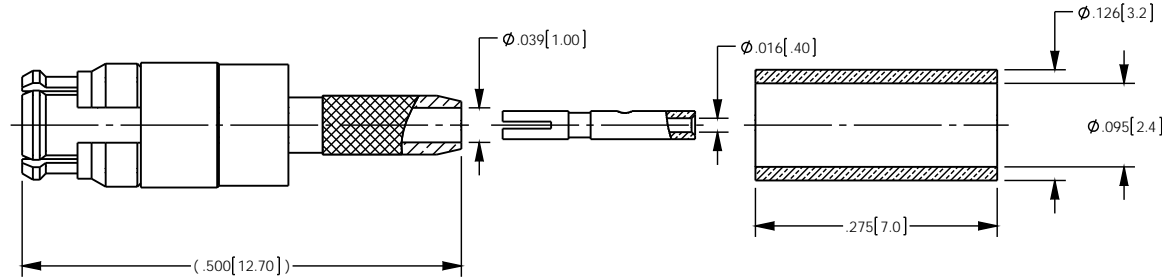


- NOTES: UNLESS OTHERWISE SPECIFIED
- FOR GENERAL SERIES SPECIFICATIONS, SEE SD361-0000
  - DESIGNED FOR USE WITH RG-178, RG-196, OR EQUIVALENT CABLE
  - MATERIAL SPECIFICATIONS:  
 INSULATOR: PTFE  
 BODY AND CONTACT: BERYLLIUM COPPER  
 FERRULE: COPPER  
 ALL OTHER METAL PARTS: BRASS
  - FINISH SPECIFICATIONS:  
 CONTACT: .000003 MIN THICK GOLD OVER .000050 MIN THICK NICKEL  
 ALL OTHER METAL PARTS: .000003 MIN THICK GOLD OVER .000080 MIN THICK NICKEL
  - ELECTRICAL SPECIFICATIONS:  
 IMPEDANCE: 50 OHMS  
 FREQUENCY RANGE: DC-3.0GHz
  - CONTACT AND FERRULE SHIPPED LOOSE
  - CRIMP WITH .128" HEX DIE.

REV	DESCRIPTION	BY	DATE	APPD
A	ER057330	CS	04/22/15	lr



RECOMMENDED TRIM DIMENSION

CATALOG P/N: 2020A504-178

PER ASME Y14.5M-1994 UNLESS OTHERWISE SPECIFIED, DIMENSIONS ARE IN INCHES (MM) TOLERANCES: DECIMAL: .XX [XX] ± .01 [0.3] .XXX [X.XX] ± .005 [0.13] .XXXX [X.XXXX] ± .XXXX		 Winchester Electronics Corporation 199 Park Road Ext Suite 104 Middlebury, Connecticut 06762	
CUSTOMER SALES DRAWING		THIRD ANGLE 	
DRAWN: CY DATE: 04/14/15 APPROVED: XXX DATE: XX/XX/XX		APPROVED: XXX DATE: 04/22/15 APPROVED: XXX DATE: XX/XX/XX	
<b>A</b>		SD2020A504-178	SHIT OF REV 1 1 A