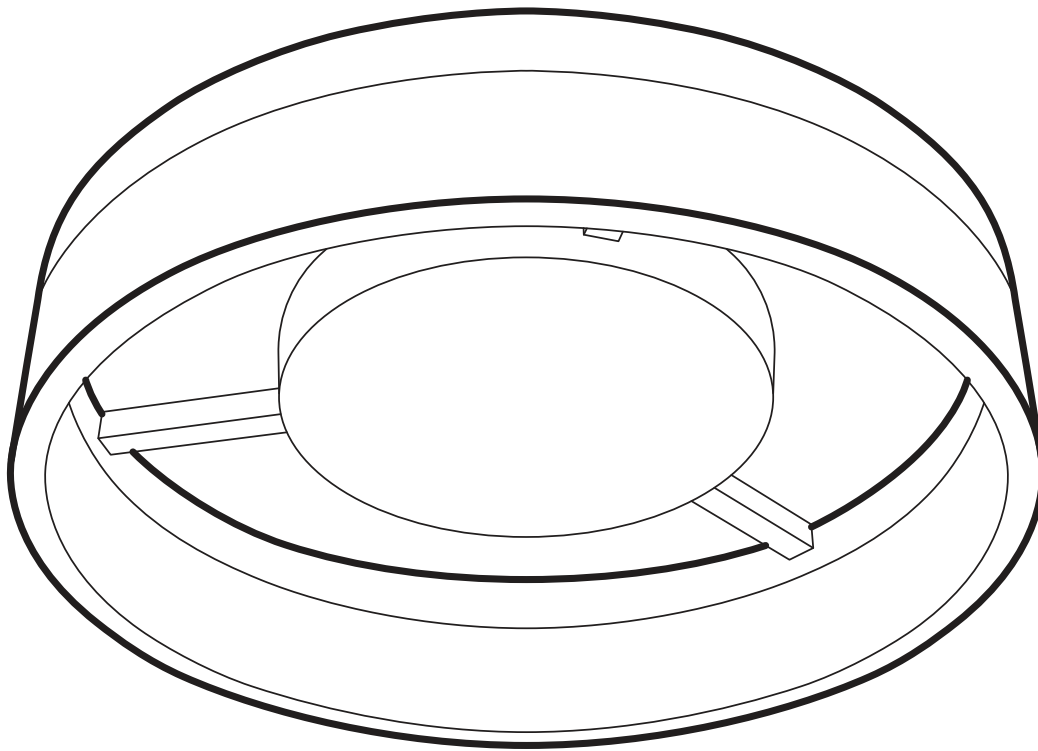


14 INCH ROUND FLUSH MOUNT

IMPORTANT SAFETY INSTRUCTIONS AND INSTALLATION GUIDE



READ BEFORE INSTALLATION
SAVE THESE INSTRUCTIONS



We appreciate the trust and confidence you have placed in Feit Electric through the purchase of this product. We strive to continually create quality products designed to enhance your home. Visit us online to see our full line of products available for your home improvement needs. Thank you for choosing Feit Electric.

Table of Contents

Safety Information	2
FCC Statement	2
Warranty	2
Pre-Assembly	3
Installation	4
Color Changing Settings	5
Care and Cleaning	5

Safety Information

For your safety, always remember to:

- ☐ Turn off the power supply at the fuse or circuit breaker box before you install the fixture.
- ☐ Ground the fixture to avoid potential electric shock and to ensure reliable starting.
- ☐ Double-check all connections to be sure they are tight and correct.
- ☐ Wear rubber soled shoes and work on a sturdy wooden ladder.
- ☐ Account for small parts and destroy packing material, as these may be hazardous to children.

This fixture is designed for use in a circuit protected by a fuse or circuit breaker. It is also designed to be installed in accordance with local electrical codes. If you are unsure about your wiring, consult a qualified electrician or local electrical inspector, and check your local electrical code.

Product Specifications

- 120VAC, 60Hz, 22W
- Wall Dimmable
- Suitable for Damp Locations



CAUTION: Turn off the main power at the circuit breaker before installing the fixture, in order to prevent possible shock.



CAUTION: Consult a certified electrician to ensure correct branch circuit conductor.



WARNING: RISK OF SHOCK. House electric current can cause painful shock or serious injury unless handled properly.



CAUTION: RISK OF FIRE. Before installing your lighting fixture, thoroughly review this installation manual. If you do not have sufficient electrical wiring experience have your fixture installed by a certified electrician. All electrical connections must be in accordance with Local and National Electrical Code (NEC) Standards. Reliable operating temperature is -13°F to 113°F / -25°C to 45°C. Suitable for Damp Locations. For more information including dimmer compatibility visit www.feit.com.

NOTICE: All electrical connections must be in accordance with local and National Electrical Code (N.E.C.) standards. If you are unfamiliar with proper electrical wiring connections obtain the services of a certified electrician.

Remove the fixture and the mounting package from the box and make sure that no parts are missing by referencing the illustrations on the installation instructions.

FCC STATEMENT

Supplier's Declaration of Conformity:

47 CFR § 2.1077 Compliance Information

Responsible Party: Feit Electric Company

4901 Gregg Road, Pico Rivera, CA 90660, USA

www.feit.com

Unique Identifier: FM14/5CCT/NK, ITM./ART. 1816513

This device complies with part 15 of the FCC Rules. Operation is subject to the following two conditions: (1) This device may not cause harmful interference, and (2) this device must accept any interference received, including interference that may cause undesired operation. Note: This equipment has been tested and found to comply with the limits for a Class B digital device, pursuant to part 15 of the FCC Rules. These limits are designed to provide reasonable protection against harmful interference in a residential installation. This equipment generates, uses and can radiate radio frequency energy and, if not installed and used in accordance with the instructions, may cause harmful interference to radio communications. However, there is no guarantee that interference will not occur in a particular installation. If this equipment does cause harmful interference to radio or television reception, which can be determined by turning the equipment off and on, the user is encouraged to try to correct the interference by one or more of the following measures: Reorient or relocate the receiving antenna. Increase the separation between the equipment and receiver. Connect the equipment into an outlet on a circuit different from that to which the receiver is connected. Consult the dealer or an experienced radio/TV technician for help. Any changes or modifications not expressly approved by the manufacturer could void the user's authority to operate the equipment.

Limited Warranty

This product is warranted to be free from defects in workmanship and materials for up to 3 years from date of purchase. If the product fails within the warranty period, please contact Feit Electric at info@feit.com, visit feit.com/contact-us or call 1-866-326-BULB (2852) for instructions on replacement or refund. REPLACEMENT OR REFUND IS YOUR SOLE REMEDY. EXCEPT TO THE EXTENT PROHIBITED BY APPLICABLE LAW, ANY IMPLIED WARRANTIES ARE LIMITED IN DURATION TO THE DURATION OF THIS WARRANTY. LIABILITY FOR INCIDENTAL OR CONSEQUENTIAL DAMAGES IS HEREBY EXPRESSLY EXCLUDED. Some states and provinces do not allow the exclusion of incidental or consequential damages, so the above limitation or exclusion may not apply to you. This warranty gives you specific legal rights, and you may also have other rights which vary from state to state or province to province.

TOOLS REQUIRED (NOT INCLUDED)

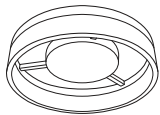


Phillips Screwdriver

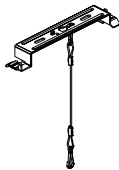
HARDWARE INCLUDED



NOTE: Hardware not shown to actual size.



AA



BB



CC



DD

Part	Description	Quantity
AA	Fixture	1
BB	Mounting Bracket with Safety Cable	1
CC	Junction Box Mounting Screws #8-32 x 1 in.	2
DD	Wire Nuts	3

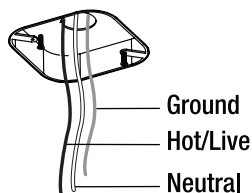
Installation

1 Turning Off the Power

Turn the power OFF at the switch and fuse box or the circuit breaker.

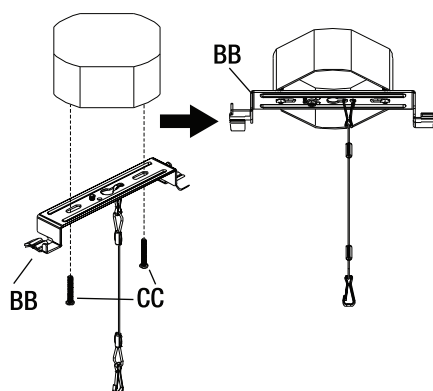
2 Identifying the Wires

Black - Hot/Live
White - Neutral
Green or Bare Copper - Ground



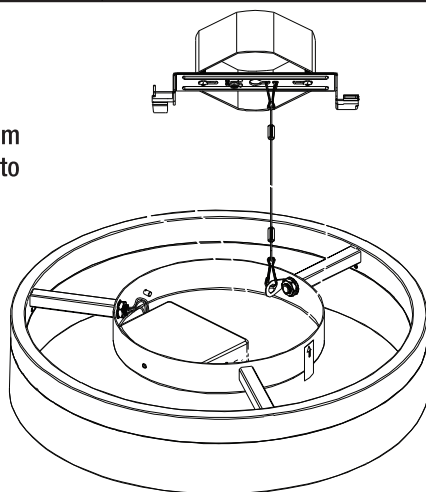
3 Installing the Mounting Bracket to the Junction Box

Line up the mounting bracket (BB) with the mounting holes on the junction box. Use a Philips head screwdriver to screw the junction box mounting screws (CC) through the mounting bracket (BB) and to the junction box.



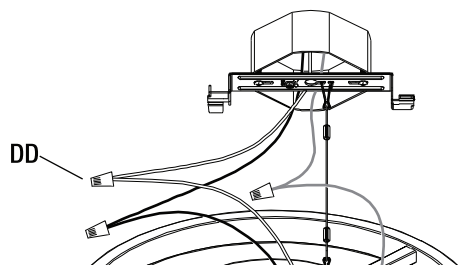
4 Connecting the Safety Cable

Secure the safety cable from the mounting bracket (BB) to the fixture (AA) to keep support the fixture during installation, simplifying wiring and prevent it from falling.



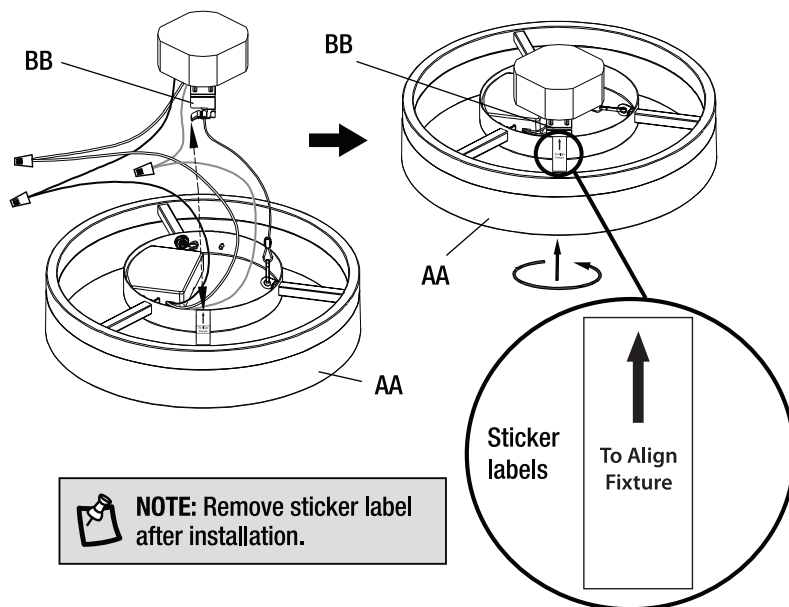
5 Connecting the Wires

Use the wire nuts (DD) to connect the wires. Black wire to Hot/Live. White wire to Neutral. Green or bare copper wire to ground.



6 Installing the Fixture to the Mounting Bracket

Push the fixture (AA) upward and align the mounting bracket (BB) with the sticker labels on the side of the canopy. Lock the fixture in place by turning clockwise until it is secured in place.



7 Turning On the Power

Turn on the fuse box or circuit breaker and the power at the wall switch.

Need Help?



Thank you for your purchase.

Questions, comments or feedback?

We'd love to hear from you.

Visit feit.com/help for support or connect with us:



@FeitElectric



@FeitElectricInc



feitelectricleighting

Color Changing Settings

Push the button on the fixture to select the desired color temperature.

Cycle through the available white colors:

Soft White = 2700K

Bright White = 3000K

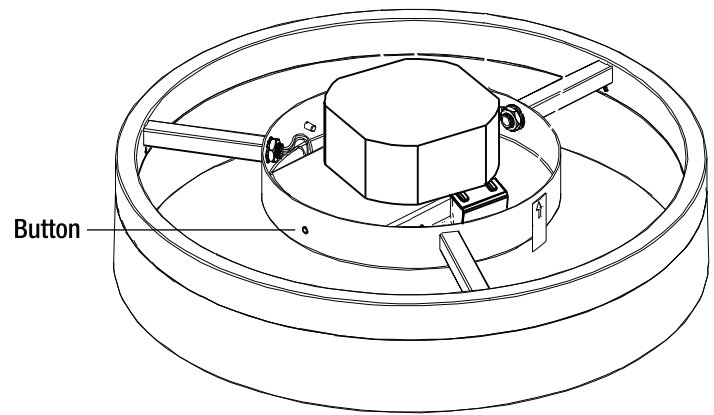
Cool White = 4000K

Daylight = 5000K

Cool Daylight = 6500K



NOTE: The color temperature is pre-set to 2700K.



Care and Cleaning

- To clean the fixture, first disconnect the power to the fixture by turning off the circuit breaker or by removing the fuse at the fuse box.
- Use a slightly dampened, clean cloth (use water, never use a solvent) to wipe the surface of the fixture.
- Allow the fixture to dry completely before power is restored.