

GOJO LTX-7™ AND LTX-12™ DISPENSER INSTALLATION INSTRUCTIONS

These instructions apply to GOJO®, PURELL®, PROVON® and MICRELL® brand LTX-7 and LTX-12 dispensers.

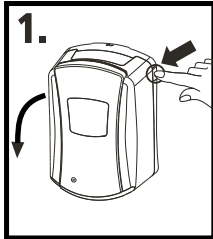
Please read all instructions carefully before installing and using the dispenser.



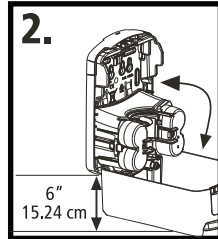
Install Dispenser and Load Refill

Do not install in locations where dispenser may be exposed to wet environments, such as showers or areas where walls are washed down.

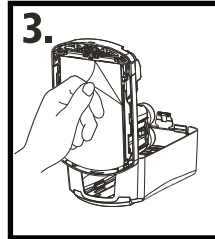
Tape Installation (Steps 3, 4 and 5)



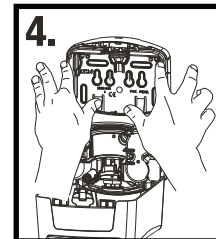
Open dispenser by pushing on one (or both) of the dual side latches.



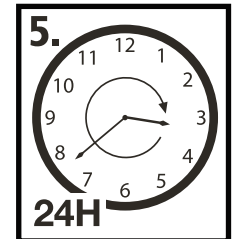
When installing above a countertop, be sure at least 6" clearance is provided.



Clean installation surface with an alcohol pad. Allow surface to dry for 60 seconds. Peel paper off installation tape.

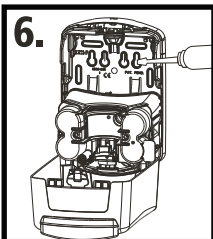


Press firmly on back plate for 10 seconds. For maximum adhesion, do not load refill for 24 hours.

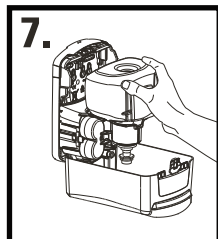


Wait 24 hours before loading refill.

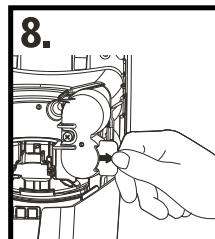
Fastener Installation



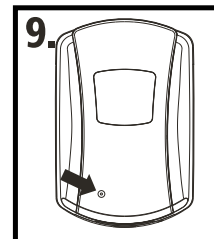
Using back plate as a template, press a pencil through the installation tape to mark holes. Mark and drill holes. Install with #10 x 1" anchors and type A #10 x 1" screws.



Remove cap from refill pump. You will notice a small knob (E-key) protruding from the white pump collar – **DO NOT REMOVE THIS E-KEY** as its removal will prevent the refill from dispensing. Push refill with E-key facing the back plate, into pump house.

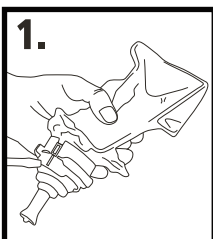


To activate battery pack, remove pull tab as indicated by red arrow.

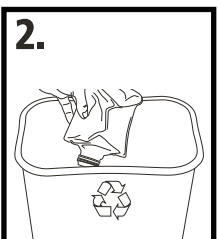


Close dispenser. Battery indicator light will initially alternate blinking red and green. After a few moments, indicator light will consistently blink green when the refill is properly loaded.

Recycling

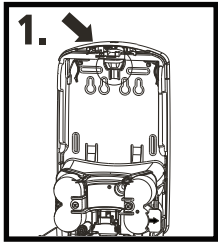


Insert a flat blade screwdriver into the slots on the refill collar and twist to separate the collar from the refill. Unscrew the pump from the bottle and discard.

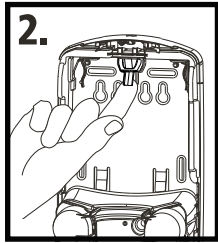


Bottle is recyclable.

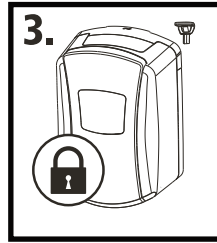
LOCK OR NOT™ Technology



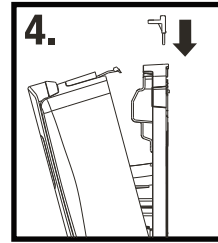
1. The key to lock the dispenser is located in the key mount on the inside of the dispenser.



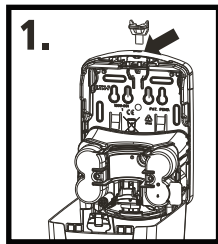
2. To lock the dispenser, remove key from the key mount on the inside of the dispenser.



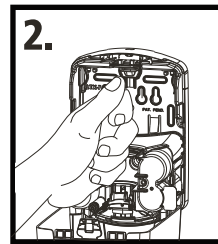
3. The dispenser is now locked.



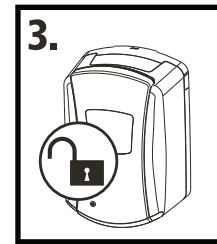
4. To open a locked dispenser, insert key into the key hole on the top of dispenser.



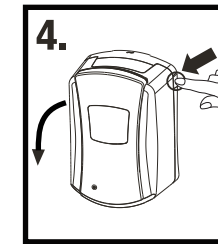
1. Open the locked dispenser by inserting the key into the key hole on the top of dispenser.



2. To return to unlocked, return the key to the mount on the inside of the dispenser.



3. The dispenser is now unlocked.



4. Open the dispenser by pushing in one of the dual side latches until it releases.



GOJO Industries, Inc.
One GOJO Plaza, Suite 500
P.O. Box 991 • Akron, OH 44309-0991
Tel: 1-330-255-6000 • Toll-free: 1-800-321-9647
Fax: 1-800-FAX-GOJO

©2014, GOJO Industries, Inc. All rights reserved.