

CODE NUMBER

3366128

DESCRIPTION

Sloan Optima® Air Sensor-Operated Wall/Wall - ADA Hand Dryer
EHD-701 110/120V

DETAILS

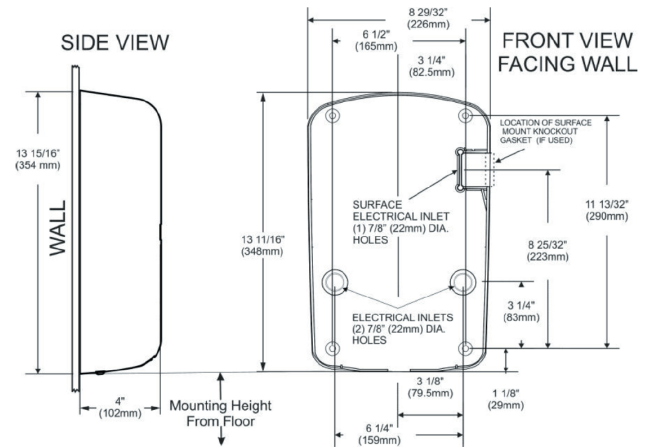
- Finish: Polished White
- Voltage: 110/120V
- Wattage: 50/60Hz
- Amperage: 7.0-7.7
- Mounting: Wall/Wall - ADA
- Power Type: Hardwired
- Depth: 4" (102mm)
- Height: 13 93/100" (354mm)
- Width: 9 39/250" (233mm)

FEATURES

- Hygienic hand drying solution
- 14 second dry time
- Electric Specifications: 110-120V - 7.0-7.2 Amps, 770-915 Watts, 50/60 Hz
- Meets ADA requirements without the need of a recess kit
- Adjustable speed and sound (High-Low)
- Adjustable Heat (High-Low-Off)
- 95% cost savings vs. paper towels
- Weight: 8-10 lbs.
- Vandal resistant cover design
- Suggested Mounting Heights for Ideal Performance (from floor to bottom of dryer): Men: 45" (114 cm), Women: 43" (109 cm), Teenagers: 41" (104 cm), Children: 35" (89 cm), ADA: 37" (94 cm).
Note: When mounting for any user ensure that it is mounted below the 48" ADA Maximum
- Available in Polished White and Brushed Nickel
- 35-second lockout feature if hands are not removed
- Externally visible Red LED light that flashes error codes to assist in troubleshooting and identify if filter has been clogged
- Virtually maintenance free
- Air temperature of up to 141°F (61°C) at a 72°F (22°C) ambient room temperature at the hands (4 inches [102 mm] below air outlet).
- Quantity Recommendations: 1 dryer for every 2 sink stations is sufficient for most applications. For high traffic applications we suggest 1 dryer per sink station.
- Variations: Available in 2 finishes/colors
- Optional Add Ons: Wall Guards (White, Black, Stainless)

DOWNLOADS

- [OPTIMA AIR™ HAND DRYER EHD-700 SERIES](#)
- [Additional Downloads](#)



COMPLIANCES & CERTIFICATIONS



(ADA Compliant, BAA Compliant, BABAA Compliant, UL Certified, cUL Certified, EPD, Proposition 65, WELL Building Standard)

RECOMMENDED SPECIFICATION

Sloan Optima Air® Sensor Operated ADA Hand Dryer.
120V/110V White Finish.

NOTES

All information contained within this document subject to change without notice.

WARRANTY

[View Warranty Information](#)

Sloan 10500 Seymour Ave, Franklin Park, IL 60131

Phone: 800.982.5839 • Fax: 800.447.8329 • sloan.com