



# TRAC-MASTER®

Avant Garde

## DIE CAST GIMBAL RING PAR LAMPHOLDERS

### T1020, T1030, T1031S and T1038

Project: \_\_\_\_\_

Fixture Type: \_\_\_\_\_

Location: \_\_\_\_\_

Contact/Phone: \_\_\_\_\_

### PRODUCT DESCRIPTION

The Die Cast Gimbal Ring fixture series offers premium construction features and extensive lamp flexibility. The narrow, arched yoke minimizes the fixture mass and gives it a fresh, modern appearance. It is designed to accommodate halogen PAR lamps as well as the latest technology LED lamps. Its robust design is mostly open, allowing air circulation which enables LED lamps to operate as cool as possible. Two versions are available for each size: an E26 medium screw base version and a GU24 twist & lock version, enabling this series to use practically any style of PAR lamp and comply with the strictest of energy codes. The E26 versions have a high wattage and low wattage labeling option to further facilitate energy code compliance. The Die Cast Gimbal Ring fixture series has a front-loading design making lamp changes a breeze. Each fixture possesses a tri-lobe locking knob to prevent the fixture from "drooping" over time due to lamp weight and to enable the fixture aiming to be locked in place, even during lamp changes.



### PRODUCT SPECIFICATIONS

**Construction** Die cast aluminum housing and die-formed steel yoke • Tri-lobe aiming lock knob to secure fixture aiming.

**Socket** E26 medium base porcelain with nickel plated copper screw shell or GU24 twist & lock.

**Juno Universal Trac Adapter** Universally compatible with both Trac-Master 1-circuit or 2-circuit trac, Trac-Lites trac, monopoints and special mountings • Also UL Recognized for use on ConTech® LT Series track • Copper alloy contacts provide precise spring action – no arcing and will not take a set • True, positive electrical ground • On /off switch included • Patented embossed polarity arrows on bottom of adapter • Spring-loaded positive latch with embossed polarity arrows secures trac light to trac • Two-position power contact provided for two-circuit application.

**Alternate TEK Trac Adapter** Compatible with Juno TEK trac system • System specific and assembled to trac fixture • Integrally polarized construction to prevent reverse installation – only allows insertion in proper orientation • Rotary circuit selector enables simple switching between circuits • Integral on/off switch enables individual fixtures to be switched for servicing.

**Alternate GTYPE Trac Adapter** Compatible with track systems based on GES type track, including Lithonia LT Commercial Track (not LTS type) • System specific and assembled to trac fixture • Consult factory for additional information.

**Alternate HTYPE Trac Adapter** Compatible with track systems which use a H-type track adapter, including Lithonia LTS Decorative Track (not LT type) • System specific and assembled to trac fixture • Two-position power contact provided for two-circuit application • Consult factory for additional information.

**Alternate LTYPE Trac Adapter** Compatible with track systems which use a L-type track adapter • System specific and assembled to trac fixture • Two-position power contact provided for two-circuit application • Consult factory for additional information.

**Accessories** Fixtures can accommodate up to two accessories using Accessory Ring.

**Aiming** 90° vertical aiming capability and 358° rotation.

**Labels** UL and C-UL Listed • E26 versions have choice of wattage rating labels to facilitate energy code compliance • Union made • Assembled in U.S.A.

Specifications subject to change without notice.

ConTech is a registered trademark of ConTech Lighting.



One Lithonia Way • Conyers, GA 30012 • Phone 1-800-705-SERV (7378) • Visit us at [www.acuitybrands.com](http://www.acuitybrands.com)  
Printed in U.S.A. ©2017-2023 Acuity Brands Lighting, Inc. Rev. 07/11/23

# TRAC-MASTER®

Avant Garde

## DIE CAST GIMBAL RING PAR LAMP HOLDERS

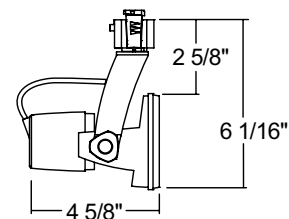
### T1020, T1030, T1031S and T1038

#### ORDERING INFORMATION

Ordering Examples: T1020 E26 10W WH, T1020 TEK E26 50W BL

**Lamp** 50W max. PAR20 lamp.

Series	Mounting Adapter	Lamp Type	Wattage Rating	Finish
<b>T1020</b> PAR20 Gimbal Ring	<b>(Blank)</b> Universal 120V Trac Adapter	<b>E26</b> Edison Screw-In Base	<b>10W</b> 10W Max.	<b>BL</b> Black
	<b>TEK</b> TEK 120V Trac Adapter	<b>GU24</b> Twist & Lock Base	<b>50W</b> 50W Max. (E26 Lamp Type only)	<b>SL</b> Silver
	<b>GTYPE</b> G-Type Trac Adapter			<b>WH</b> White
	<b>HTYPE</b> H-Type Trac Adapter			
	<b>LTYPE</b> L-Type Trac Adapter			



#### Accessories

**T40N**<sup>1</sup> Monopoint CanopySee specification sheet [D1.2.2](#) for details.Other accessories can be found on specification sheet [D1.2.0](#).

Notes:

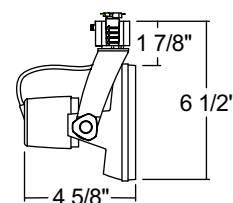
<sup>1</sup> Add finish code to complete catalog number (Example: T40N WH).

#### ORDERING INFORMATION

Ordering Examples: T1031S E26 18W WH, T1031S TEK E26 75W BL

**Lamp** 75W max. PAR30S short-neck lamp.

Series	Mounting Adapter	Lamp Type	Wattage Rating	Finish
<b>T1031S</b> PAR30S Gimbal Ring	<b>(Blank)</b> Universal 120V Trac Adapter	<b>E26</b> Edison Screw-In Base	<b>18W</b> 18W Max.	<b>BL</b> Black
	<b>TEK</b> TEK 120V Trac Adapter	<b>GU24</b> Twist & Lock Base	<b>75W</b> 75W Max. (E26 Lamp Type only)	<b>SL</b> Silver
	<b>GTYPE</b> G-Type Trac Adapter			<b>WH</b> White
	<b>HTYPE</b> H-Type Trac Adapter			
	<b>LTYPE</b> L-Type Trac Adapter			



#### Accessories

<b>TAH BLCK 469</b>	Accessory Ring - Black	<b>EYEBROWBL 469</b> <sup>1</sup>	Eyebrow - Black	<b>DIFF 469</b> <sup>1</sup>	Diffusion Lens
<b>HCLBL 469</b> <sup>1</sup>	Hexagonal Cell Louver - Black	<b>CGF 469</b> <sup>1</sup>	Color Glass Filters	<b>SOLITE 469</b> <sup>1</sup>	Uniformity Lens
<b>CCLBL 469</b> <sup>1</sup>	Cube Cell Louver - Black	<b>DGF 469</b> <sup>1</sup>	Dichroic Glass Filters	<b>PRISM 469</b> <sup>1</sup>	Prismatic Spread Lens
<b>XBAFLBL 469</b> <sup>1</sup>	Cross Baffle - Black	<b>DCCF 469</b> <sup>1</sup>	Dichroic Color Correction Filter	<b>LSPREAD 469</b> <sup>1</sup>	Linear Spread Lens
<b>SNOOTBL 469</b> <sup>1</sup>	Snoot - Black	<b>UVF 469</b> <sup>1</sup>	UV Filter	<b>T40N</b> <sup>2</sup>	Monopoint Canopy

See specification sheet [D1.2.2](#) for details.Other accessories can be found on specification sheet [D1.2.0](#).

Notes:

<sup>1</sup> Filters, lenses and louver require Accessory Ring for installation.<sup>2</sup> Add finish code to complete catalog number (Example: T40N WH).

# TRAC-MASTER®

Avant Garde

## DIE CAST GIMBAL RING PAR LAMPHOLDERS

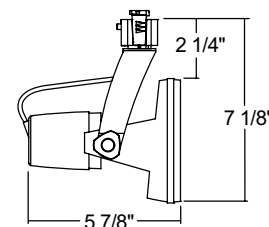
### T1020, T1030, T1031S and T1038

#### ORDERING INFORMATION

Ordering Examples: T1030 E26 18W WH, T1030 TEK E26 75W BL

**Lamp** 75W max. PAR30L long-neck lamp.

Series		Mounting Adapter		Lamp Type	Wattage Rating	Finish			
T1030	PAR30L Gimbal Ring	(Blank)	Universal 120V Trac Adapter	E26	Edison Screw-In Base	18W	18W Max.	BL	Black
		TEK	TEK 120V Trac Adapter	GU24	Twist & Lock Base	75W	75W Max. (E26 Lamp Type only)	SL	Silver
		GTYPE	G-Type Trac Adapter						
		HTYPE	H-Type Trac Adapter						
		LTYPE	L-Type Trac Adapter						



#### Accessories

<b>TAH BLCK 469</b>	Accessory Ring - Black	<b>EYEBROWBL 469<sup>1</sup></b>	Eyebrow - Black	<b>DIFF 469<sup>1</sup></b>	Diffusion Lens
<b>HCLBL 469<sup>1</sup></b>	Hexagonal Cell Louver - Black	<b>CGF 469<sup>1</sup></b>	Color Glass Filters	<b>SOLITE 469<sup>1</sup></b>	Uniformity Lens
<b>CCLBL 469<sup>1</sup></b>	Cube Cell Louver - Black	<b>DGF 469<sup>1</sup></b>	Dichroic Glass Filters	<b>PRISM 469<sup>1</sup></b>	Prismatic Spread Lens
<b>XBAFLBL 469<sup>1</sup></b>	Cross Baffle - Black	<b>DCCF 469<sup>1</sup></b>	Dichroic Color Correction Filter	<b>LSPREAD 469<sup>1</sup></b>	Linear Spread Lens
<b>SNOOTBL 469<sup>1</sup></b>	Snoot - Black	<b>UVF 469<sup>1</sup></b>	UV Filter	<b>T40N<sup>2</sup></b>	Monopoint Canopy

See specification sheet [D1.2.2](#) for details.Other accessories can be found on specification sheet [D1.2.0](#).

#### Notes:

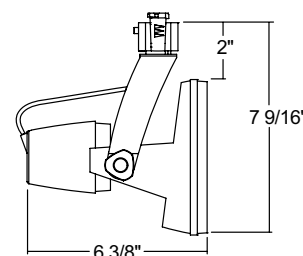
- 1 Filters, lenses and louver require Accessory Ring for installation.
- 2 Add finish code to complete catalog number (Example: T40N WH).

#### ORDERING INFORMATION

Ordering Examples: T1038 E26 25W WH, T1038 TEK E26 150W BL

**Lamp** 150W max. PAR38 lamp.

Series	Mounting Adapter	Lamp Type	Wattage Rating	Finish	
T1038 Gimbal Ring	(Blank)	Universal 120V Trac Adapter	<b>E26</b> Edison Screw-In Base <b>GU24</b> Twist & Lock Base	<b>25W</b> 25W Max. <b>150W</b> 150W Max. (E26 Lamp Type only)	<b>BL</b> Black <b>SL</b> Silver <b>WH</b> White
	TEK	TEK 120V Trac Adapter			
	GTYPE	G-Type Trac Adapter			
	HTYPE	H-Type Trac Adapter			
	LTYPE	L-Type Trac Adapter			



#### Accessories

<b>TAH BLCK 550</b>	Accessory Ring - Black	<b>CGF 550<sup>1</sup></b>	Color Glass Filters
<b>CCLBL 550<sup>1</sup></b>	Cube Cell Louver - Black	<b>T40N<sup>2</sup></b>	Monopoint Canopy

See specification sheet [D1.2.2](#) for details.Other accessories can be found on specification sheet [D1.2.0](#).

#### Notes:

- 1 Filters, lenses and louver require Accessory Ring for installation.
- 2 Add finish code to complete catalog number (Example: T40N WH).