

This document, including the design, configuration and mechanical features revealed herein are the sole, confidential and proprietary property of TRU Corporation. Reproduction or use thereof, in whole or part, is prohibited without the prior written consent of TRU Corporation.

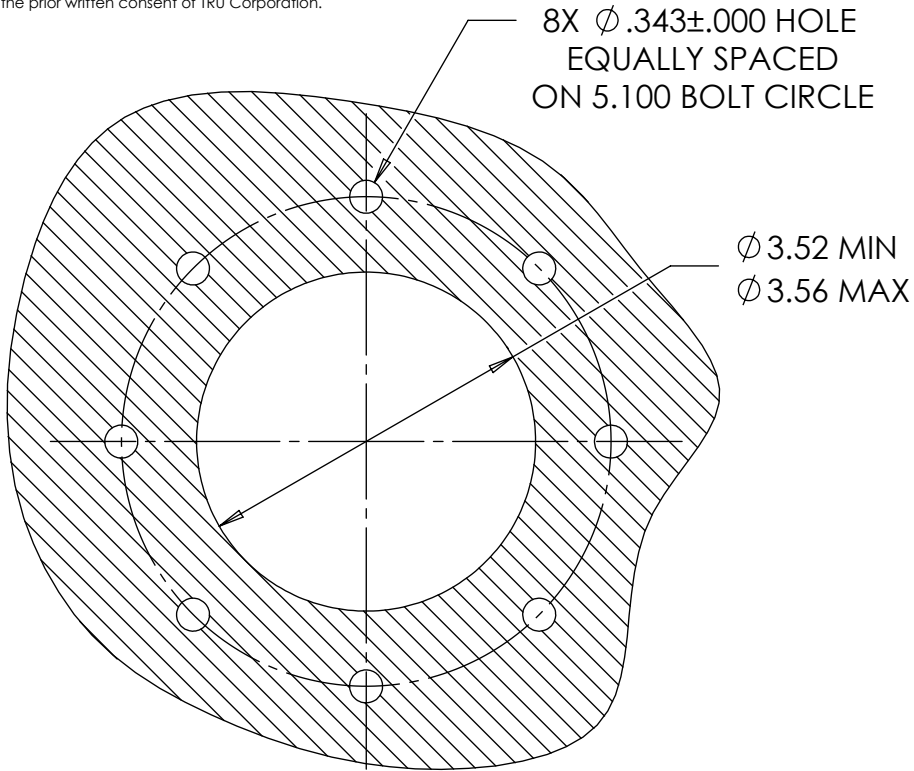
REV.	DESCRIPTION	DATE	APPROVED
-	ORIGINAL ISSUE	10/31/14	AM

D

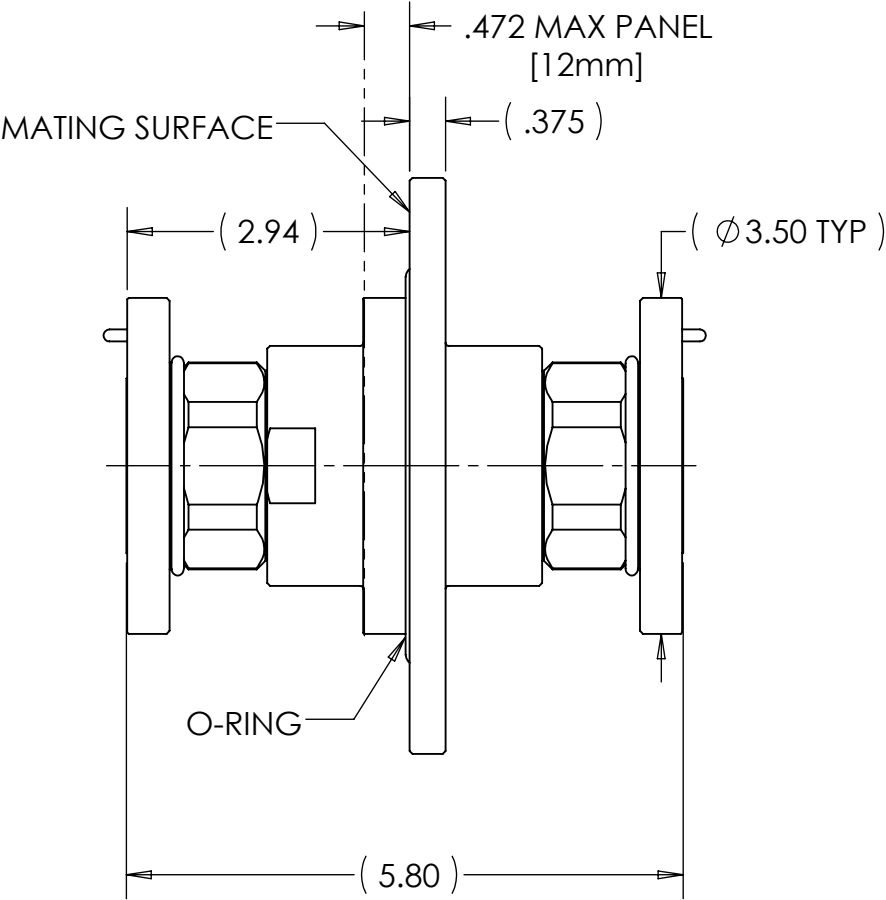
C

B

A

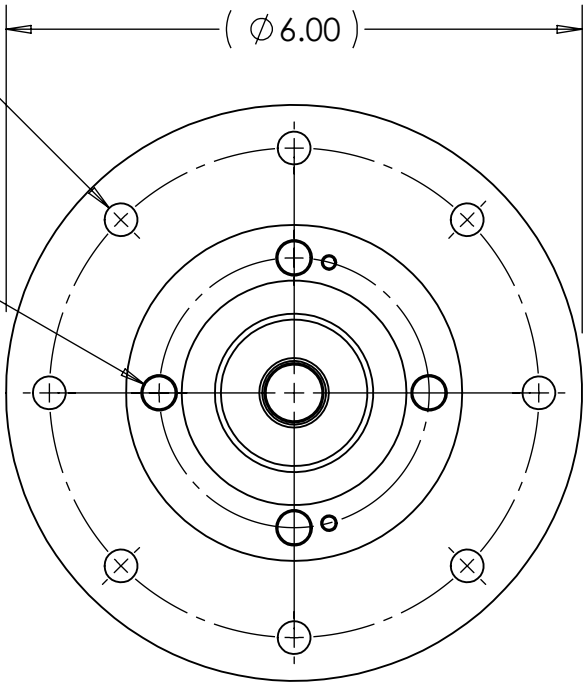


MOUNTING HOLE DIMENSIONS



8X Ø.343 HOLE ON Ø 5.100 B.C.

4X Ø.343 HOLE ON Ø 2.812 B.C. TYP BOTH ENDS

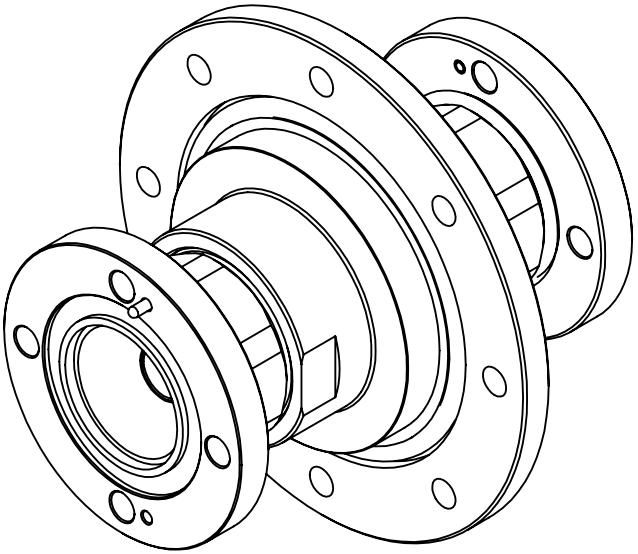


D

C

B

A



ENGINEERING DATA

ELECTRICAL:
IMPEDANCE: 50 OHMS NOMINAL
FREQUENCY RANGE: DC to 3GHz


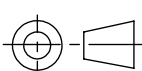
MECHANICAL:
INTERFACE: 1-5/8EIA(f) PER EIA STD RS-225 AND MIL-DTL-24044 WITH SWIVEL FLANGE

ENVIRONMENTAL:
SEALED INNER & OUTER CONDUCTORS, 10-6 mbar

MATERIAL:
INSULATORS: PTFE (TEFLON)
O-RINGS: SILICONE RUBBER
BODIES: BRASS
CONTACTS: BRASS

FINISH:
BODIES: NICKEL PLATED
CONTACTS: SILVER PLATED

- NOTES:
- UNLESS OTHERWISE SPECIFIED; ALL DIMENSIONS ARE REFERENCE ONLY.
 - HARDWARE NOT PROVIDED FOR PANEL MOUNT FLANGE.

MATERIAL	DO NOT SCALE DRAWING	DRAWN AM	DATE 10/30/14	<div><div>TRU Corporation 245 Lynnfield St, Peabody, MA 01960</div><div>EXPERIENCE. TRU INNOVATION.</div></div> <div>TITLE: CONNECTOR, COAXIAL, RF 1-5/8EIA(f) to 1-5/8EIA(f) BLKD ADAPTER</div>		
	UNLESS OTHERWISE SPECIFIED: DIMENSIONS ARE IN INCHES TOLERANCES: FRACTIONS: ± 1/64 .XX : ±.01 .XXX: ±.005 ANGLES: ± 1/2° MACHINED SURFACES: 63/✓	ENG APPR. AM	DATE 10/30/14			
		MFG APPR.	DATE			
		OTHER APPR.	DATE			
COMMENTS:	THIRD ANGLE PROJECTION 	SIZE B		DWG. NO. TRU-12800		REV -
		CAGE CODE: 92180		SCALE: 1:2	SHEET 1 OF 1	
surface area: sq inch		weight: 8.73 lbs				