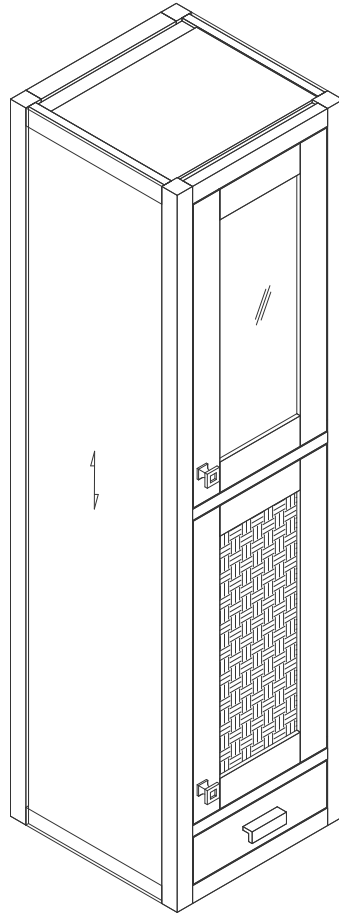


# 15"X15" ADDISON GRAND TOWER HUTCH-RIGHT

E444-H15R-MCA

**JAMES MARTIN**  
VANITIES



## Features and Materials

Solids: Para Wood and Yellow Poplar

Veneers: Mango

Panels: MDF

Installation Type: Floor Standing with Wooden Stand (E444-ST15-MCA); or Coordinate with Base Cabinet(E444-BC15-MCA) & Countertop Unit(E444-CU30-MCA) or Wall Mounted

Number of Doors: Two

Number of Drawers: One

LED Light: YES

USB/Power Component: YES (ETL501108 0)

Cord Length: 6'6"

Assembly Type: Attach to Wall for wall mount or base for freestanding (hardware included)

Door Panel: Reversible. One Side Finished in Mid-Century Acacia, One

Side Natural Cork (Pattern: Herringbone )

Drawer Box Material and Construction: 15mm Poplar/English Dovetail Joinery

Hardware Material and Finish: Zinc Alloy in Burnished Nickel Color

Full Extension, Soft Close Glides

European Soft Close Hinges

Aluminum Laminate Drawer Liners

## Dimension

Width: 14-7/8"

Depth: 14-7/8"

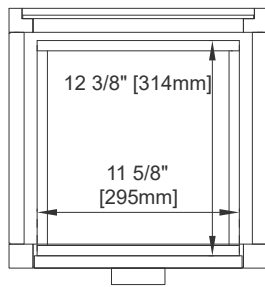
Height: 55-5/8"

# 15"X15" ADDISON GRAND TOWER HUTCH-RIGHT

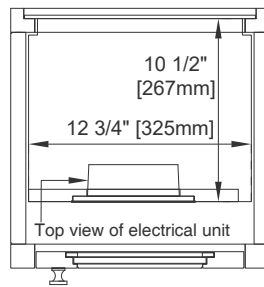
E444-H15R-MCA

# JAMES MARTIN

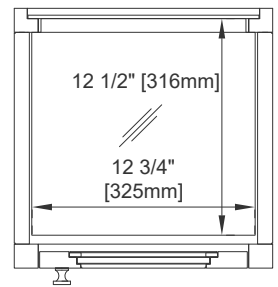
## VANITIES



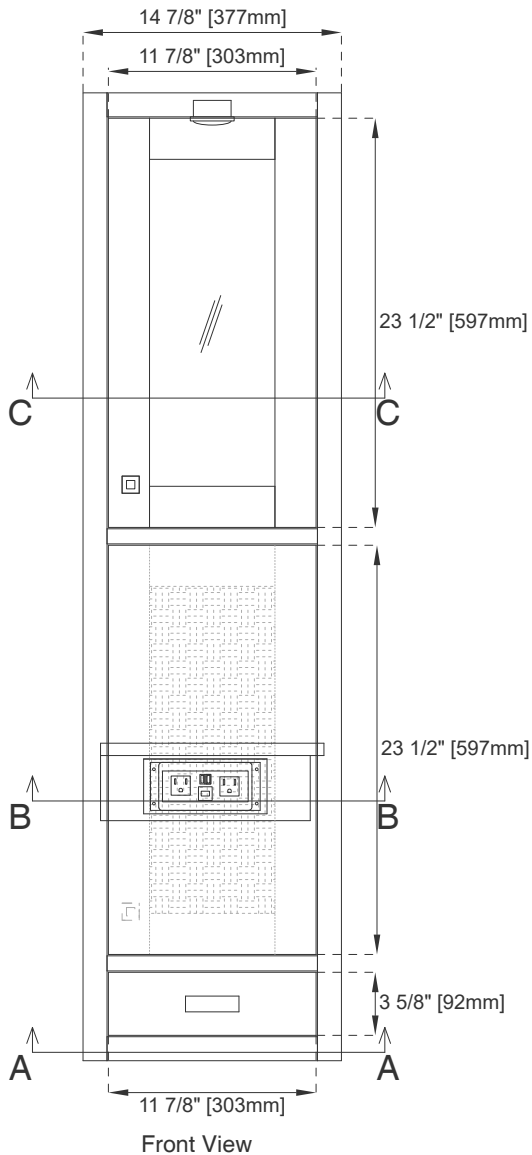
Top View 1  
Section A-A



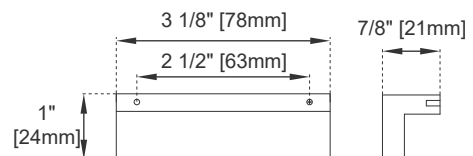
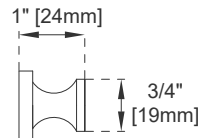
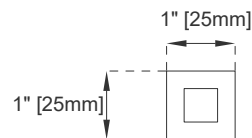
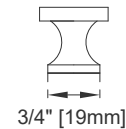
Top View 2  
Section B-B



Top View 3  
Section C-C



Front View



Knob

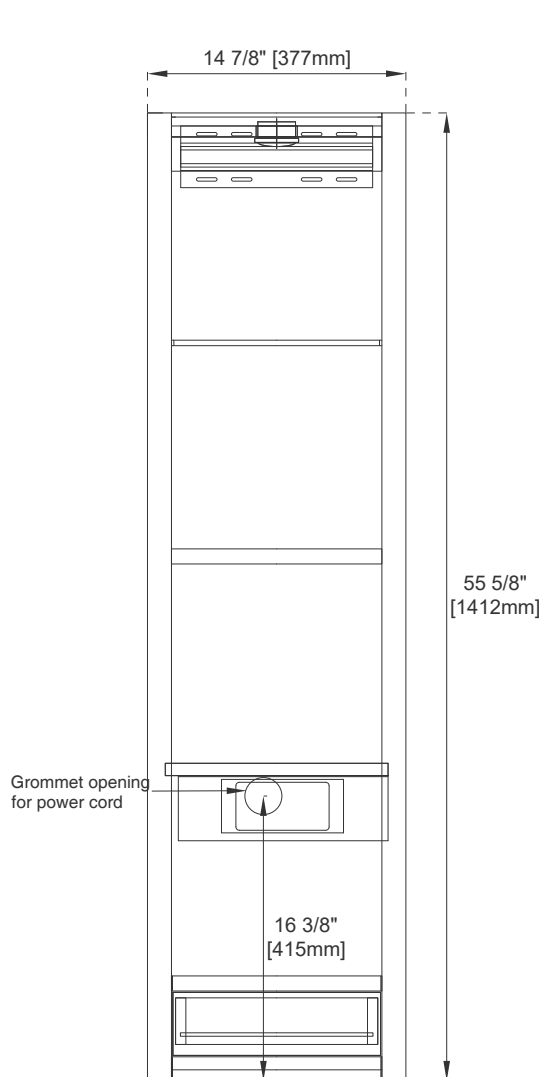
All dimensions are nominal

Visit website for warranty and installation information  
[www.jamesmartinvanities.com](http://www.jamesmartinvanities.com)

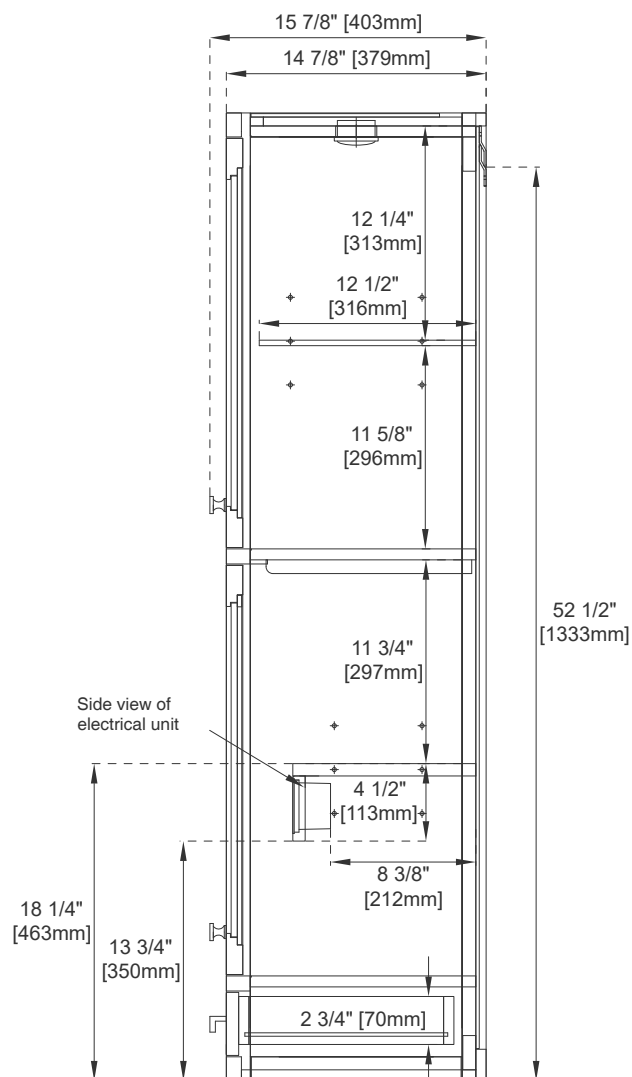
# 15"X15" ADDISON GRAND TOWER HUTCH-RIGHT

E444-H15R-MCA

**JAMES MARTIN**  
VANITIES



Back View



Side View

All dimensions are nominal

Visit website for warranty and installation information  
[www.jamesmartinvanities.com](http://www.jamesmartinvanities.com)