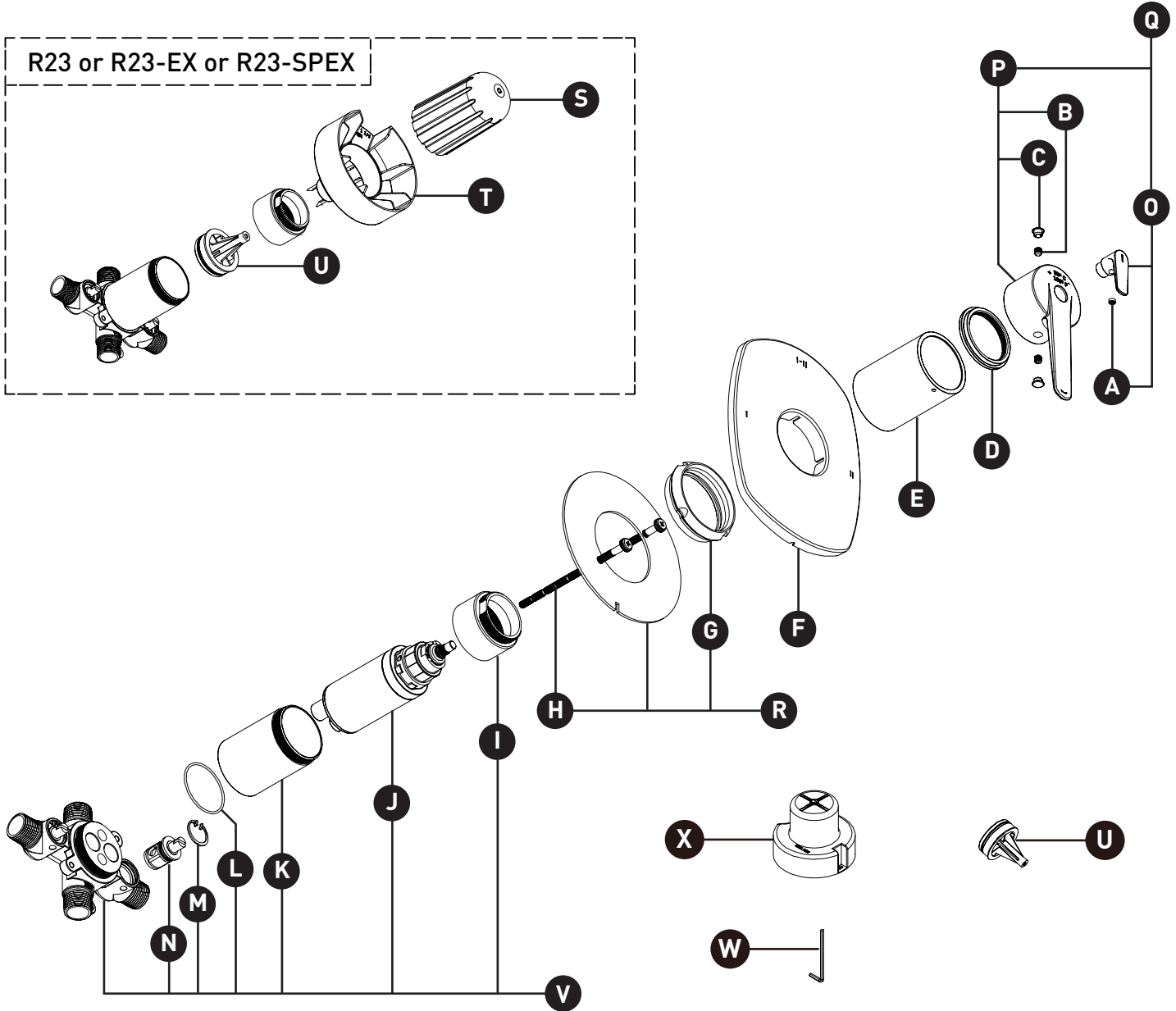


ORDER BY PART NUMBER

ILLUSTRATED PARTS

VY23

2-way Type T/P coaxial complete valve



For warranty or additional information, contact:

US Customers

U.S.A.
houseofrohl.com/support
1-800-777-9762

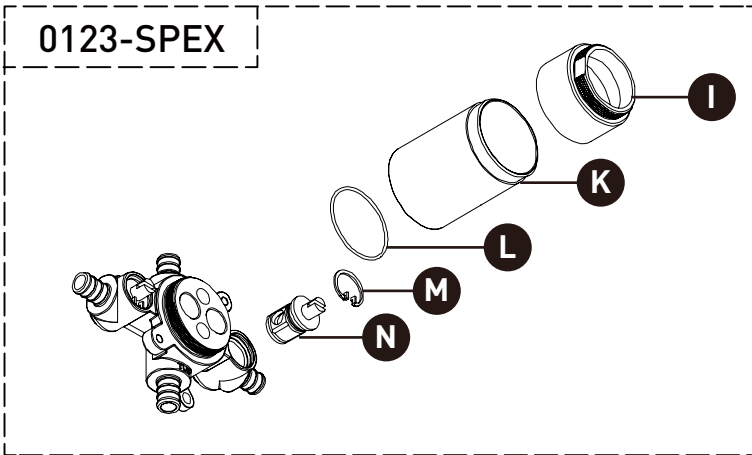
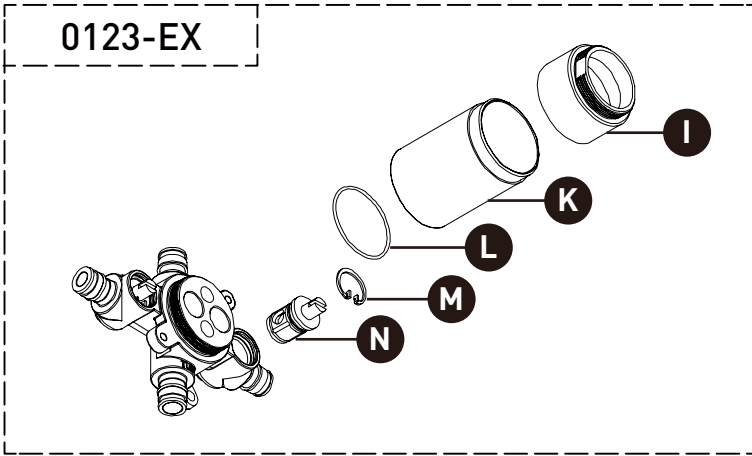
Canadian Customers

QUEBEC / MARITIMES / WESTERN CANADA
QUÉBEC / MARITIMES / OUEST CANADIEN
QUEBEC / MARITIMOS / CANADA OCCIDENTAL
houseofrohl.ca/support
1-866-473-8442

ONTARIO
houseofrohl.ca/support
1-800-287-5354

ORDER BY PART NUMBER

ILLUSTRATED PARTS



ID	Kit Number	Finish
A	152-030	N/A
B	152-050 (2x)	N/A
*C	003-421 (2x)	See below
*D	052-071	See below
*E	053-004	See below
*F	S213292C	See below
G	302-414	N/A
H	392-207 (2x)	N/A
I	305-441	N/A
J	0924	N/A
K	039-030	N/A
L	215-380	N/A
M	390-741 (2x)	N/A
N	7441 (2x)	N/A
O	1956	N/A
*P	1952	See below
*Q	1659	See below
R	S5-948	N/A
S	430-151	N/A
T	430-051	N/A
U	7511	N/A
V	0123	N/A
W	505-025 (2.5mm)	N/A
X	430-102	N/A

*Finish Determined by Suffix	
Finish	Description
C	Chrome

For warranty or additional information, contact:

US Customers

U.S.A.
houseofrohl.com/support
1-800-777-9762

Canadian Customers

QUEBEC / MARITIMES / WESTERN CANADA
QUÉBEC / MARITIMES / OUEST CANADIEN
QUEBEC / MARITIMOS / CANADA OCCIDENTAL
houseofrohl.ca/support
1-866-473-8442

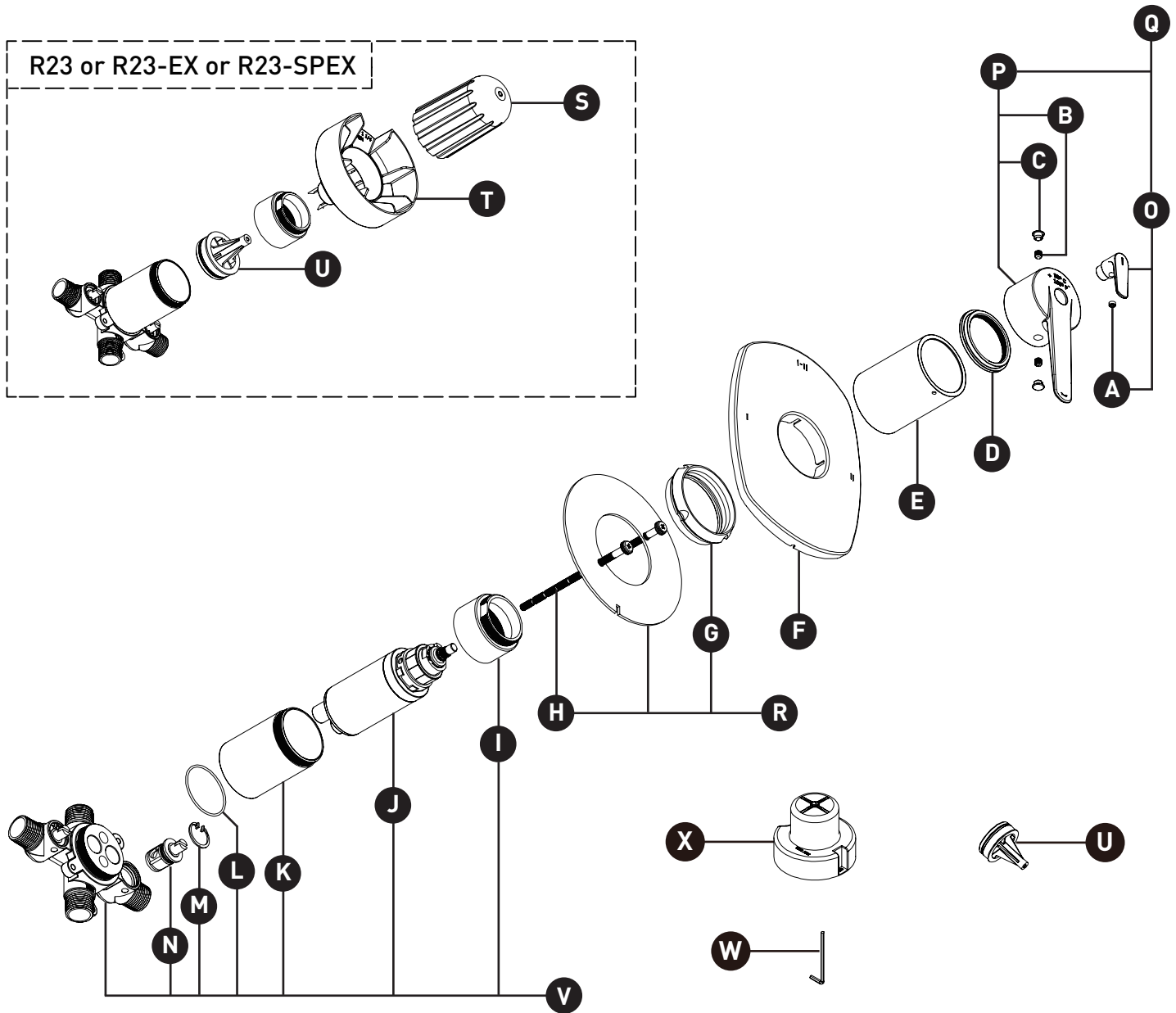
ONTARIO
houseofrohl.ca/support
1-800-287-5354

VEUILLEZ EFFECTUER VOTRE COMMANDE
PAR NO DE RÉFÉRENCE

ILLUSTRATIONS DES PIÈCES

VY23

Valve complète 2 voies coaxiale Type T/P



For warranty or additional information, contact:

US Customers

U.S.A.
houseofrohl.com/support
1-800-777-9762

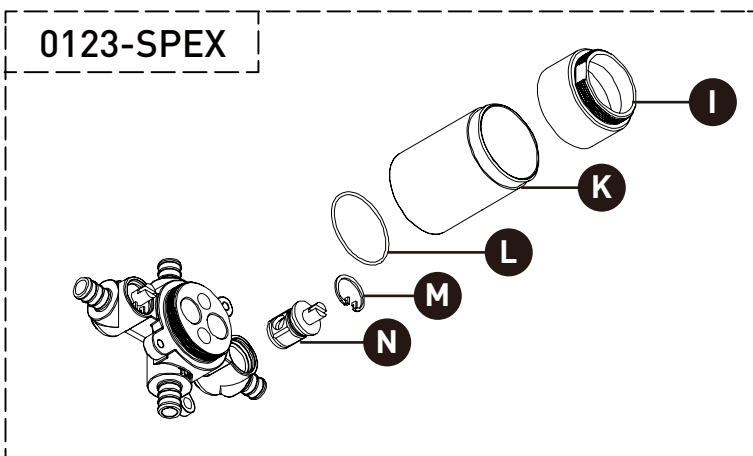
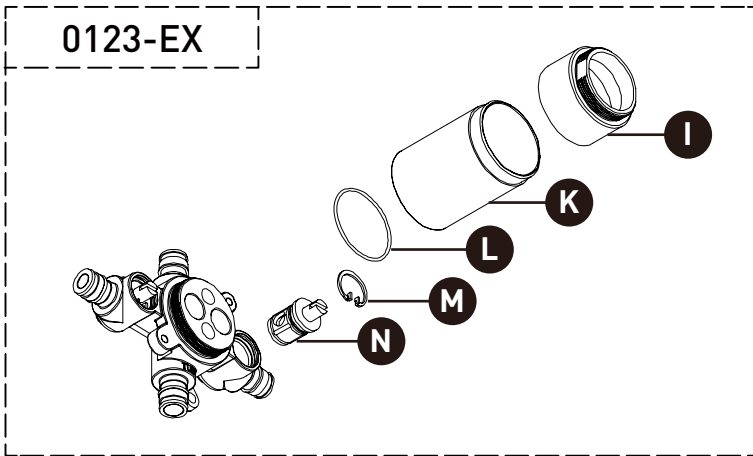
Canadian Customers

QUEBEC / MARITIMES / WESTERN CANADA
QUÉBEC / MARITIMES / OUEST CANADIEN
QUEBEC / MARITIMOS / CANADA OCCIDENTAL
houseofrohl.ca/support
1-866-473-8442

ONTARIO
houseofrohl.ca/support
1-800-287-5354

VEUILLEZ EFFECTUER VOTRE COMMANDE
PAR NO DE RÉFÉRENCE

ILLUSTRATIONS DES PIÈCES



ID	Référence du kit	Finition
A	152-030	N/A
B	152-050 (2x)	N/A
*C	003-421 (2x)	See below
*D	052-071	See below
*E	053-004	See below
*F	S213292C	See below
G	302-414	N/A
H	392-207 (2x)	N/A
I	305-441	N/A
J	0924	N/A
K	039-030	N/A
L	215-380	N/A
M	390-741 (2x)	N/A
N	7441 (2x)	N/A
O	1956	N/A
*P	1952	See below
*Q	1659	See below
R	S5-948	N/A
S	430-151	N/A
T	430-051	N/A
U	7511	N/A
V	0123	N/A
W	505-025 (2.5mm)	N/A
X	430-102	N/A

*Finition déterminée par le Suffixe	
<u>Finition</u>	<u>Description</u>
C	Chrome poli

For warranty or additional information, contact:

US Customers

U.S.A.
houseofrohl.com/support
1-800-777-9762

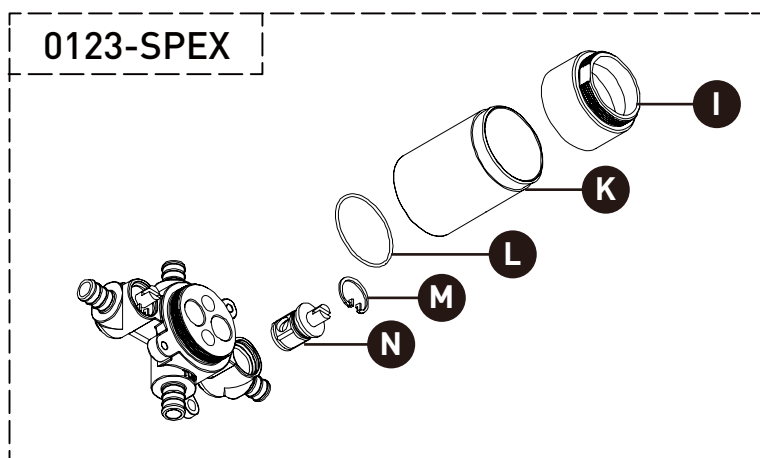
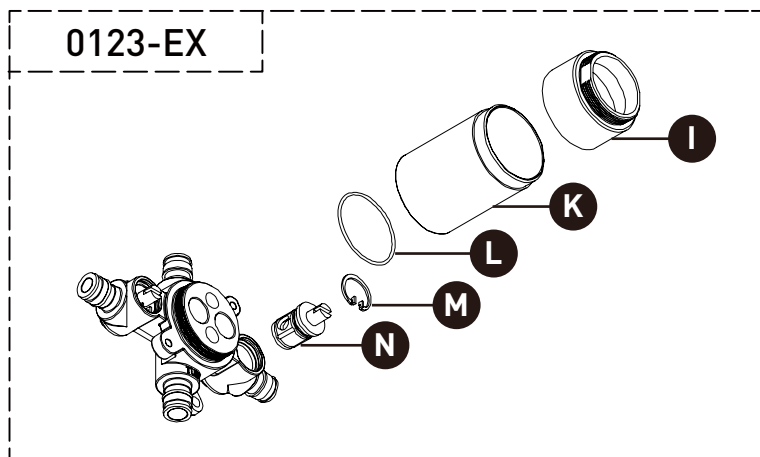
Canadian Customers

QUEBEC / MARITIMES / WESTERN CANADA
QUÉBEC / MARITIMES / OUEST CANADIEN
QUEBEC / MARITIMOS / CANADA OCCIDENTAL
houseofrohl.ca/support
1-866-473-8442

ONTARIO
houseofrohl.ca/support
1-800-287-5354

PEDIR POR NÚMERO DE REFERENCIA

PIEZAS ILUSTRADAS



ID	Referencia del kit	Acabado
A	152-030	N/A
B	152-050 (2x)	N/A
*C	003-421 (2x)	See below
*D	052-071	See below
*E	053-004	See below
*F	S213292C	See below
G	302-414	N/A
H	392-207 (2x)	N/A
I	305-441	N/A
J	0924	N/A
K	039-030	N/A
L	215-380	N/A
M	390-741 (2x)	N/A
N	7441 (2x)	N/A
O	1956	N/A
*P	1952	See below
*Q	1659	See below
R	S5-948	N/A
S	430-151	N/A
T	430-051	N/A
U	7511	N/A
V	0123	N/A
W	505-025 (2.5mm)	N/A
X	430-102	N/A

***Acabado determinado por el sufijo**

Acabado	Descripción
C	Cromado brillante

For warranty or additional information, contact:

US Customers

U.S.A.
houseofrohl.com/support
1-800-777-9762

Canadian Customers

QUEBEC / MARITIMES / WESTERN CANADA
QUÉBEC / MARITIMES / QUÉBEC CANADIEN
QUEBEC / MARITIMOS / CANADA OCCIDENTAL
houseofrohl.ca/support
1-866-473-8442

ONTARIO
houseofrohl.ca/support
1-800-287-5354